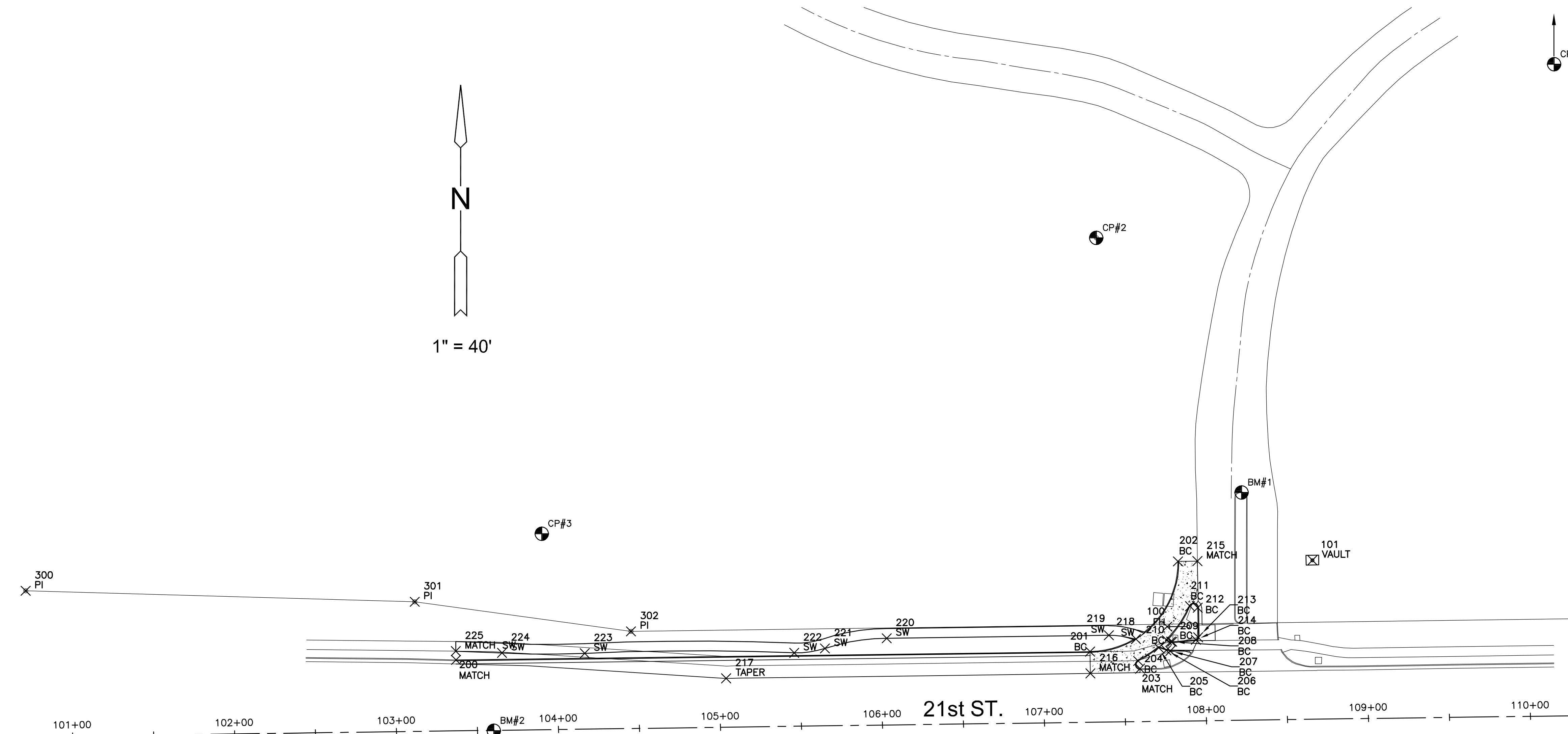


PLOTTED: Tuesday, July 29, 2014 @ 05:33PM



**PAVING PLANS FOR**  
**MESSIAH BAPTIST CHURCH 4TH ADDITION**  
**21ST STREET RIGHT TURN LANE**



WATER POINTS			
Point #	Northing	Easting	Desc.
100	1699898.90	1689637.39	FH
101	1699939.91	1689727.06	VAULT

PAVING POINTS			
Point #	Northing	Easting	Desc.
200	1699878.41	1689198.38	MATCH
201	1699883.51	1689589.77	BC
202	1699939.22	1689644.05	BC
203	1699872.97	1689620.66	MATCH
204	1699877.71	1689619.51	BC
205	1699885.94	1689632.19	BC
206	1699884.35	1689636.86	BC
207	1699883.92	1689639.33	BC
208	1699889.61	1689640.50	BC
209	1699889.71	1689639.73	BC
210	1699890.55	1689637.26	BC
211	1699911.55	1689651.48	BC
212	1699910.59	1689656.28	BC
213	1699892.34	1689656.51	BC
214	1699890.83	1689655.15	BC
215	1699939.37	1689656.05	MATCH
216	1699870.04	1689589.96	MATCH
217	1699866.99	1689365.12	TAPER
218	1699891.24	1689618.15	SW
219	1699893.56	1689601.37	SW
220	1699891.71	1689464.28	SW
221	1699885.43	1689426.16	SW
222	1699882.75	1689407.21	SW
223	1699882.45	1689277.90	SW
224	1699882.72	1689226.84	SW
225	1699883.78	1689198.31	MATCH SW

PLAT POINTS			
Point #	Northing	Easting	Desc.
300	1699921.02	1688932.78	PI
301	1699914.27	1689172.91	PI
302	1699895.99	1689306.44	PI
303	1699907.69	1690174.78	PI

**DATUM:**

1) THE PROJECT HORIZONTAL DATUM IS BASED ON THE NAD83, KANSAS STATE PLANE COORDINATE SYSTEM, SOUTH ZONE, (US SURVEY FEET DEFINITION), WITH A COMBINED ADJUSTMENT FACTOR (CAF) OF 1.000120014. ALL COORDINATE AND DIMENSIONS SHOWN ON THESE PLANS ARE MODIFIED TO GROUND VALUES.

THE FOLLOWING EQUATIONS CAN BE USED FOR CONVERSION:  
 GROUND COORDINATES TO STATE PLANE COORDINATES = GROUND X 1/CAF  
 STATE PLANE COORDINATES TO GROUND COORDINATES = STATE PLANE X CAF

2) THE VERTICAL DATUM USED IS NAVD88.

**CONTROL:**

HORIZONTAL CONTROL ON GROUND COORDINATES

PT_NO	NORTH	EAST	ELEV	DESCRIPTION	BASELINE, OFFSET
1	1700389.051	1689876.219	1386.408	5/8" REBAR W/ RED MKEC DESIGN PT CAP	110+21.97, 545.2' LT.
2	1700138.892	1689593.674	1385.223	5/8" REBAR W/ RED MKEC DESIGN PT CAP	107+36.06, 298.9' LT.
3	1699956.307	1689251.362	1378.429	5/8" REBAR W/ RED MKEC DESIGN PT CAP	103+91.30, 121.0' LT.

**VERTICAL**

BM #1 CHISELED SQUARE CUT ONTO THE NORTH SIDE OF THE ISLAND AT THE NEWSRING CHURCH MAIN ENTRANCE  
 ELEVATION = 1384.97 (NAVD 88)

BM #2 CHISELED SQUARE CUT INTO THE TOP OF CURB AT THE EAST END OF THE ISLAND ON 21ST STREET,  
 JUST EAST OF THE K-96 INTERCHANGE.  
 ELEVATION = 1377.34 (NAVD 88)

BASELINE=21st STREET SECTION LINE

BEGINNING (100+00.0)  
 SW CORNER, SE 1/4, SECTION 3, TOWNSHIP 27S, RANGE 2E  
 N=1699830.02, E=1688861.73

END (126+50.64)  
 SE CORNER, SE 1/4, SECTION 3, TOWNSHIP 27S, RANGE 2E  
 N=1699865.95, E=1691512.13

EVERY ATTEMPT HAS BEEN MADE TO INSURE ALL COORDINATE VALUES SHOWN ARE AN ACCURATE AND TRUE REPRESENTATION OF THE CURRENT PLANS. ALL VALUES ARE TO BE CONFIRMED WITH THE FINAL SIGNED PLAN SET BEFORE USE.

©2013 MKEC Engineering All Rights Reserved  
 www.mkec.com  
 These drawings and their contents, including, but not limited to, all concepts, designs, & ideas are the exclusive property of MKEC Engineering (MKEC), and may not be used or reproduced in any way without the express consent of MKEC.

<b>BUBBLE MAP</b>	
PROJECT NO.	472-85168
DATE	JULY 2014
SCALE	1"=40'
DESIGNED	DRAWN
SPE	GJA
NO.	REVISION
SHEET NO.	
25 OF 28	

J:\PROJECTS\2013\1301010706\_NEWSPRING\_CHURCH5-CIVIL\CAD\PAV\13706\_BUBBLE.DWG