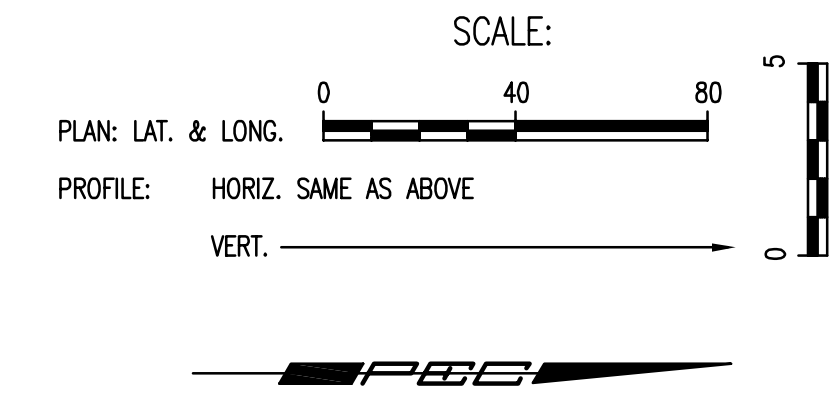


DATE	
BY	
CHECKED	CHECKED
PLAN	



N-1,692,948.3954, E-1,686,387.3764
Sta. 0+00.0
Core existing concrete MH wall and
Install New 8" Pipe. Seal new 8"
Pipe to MH with an approved
waterstop gasket and non-shrink
grout. Construct a minimum of
3' Reinforced Concrete Encasement
from MH wall. Reshape MH floor
to provide smooth flow. This work
shall be considered subsidiary
to the price bid for pipe in place.

CAUTION !!!
Buried Telephone
(SBC)

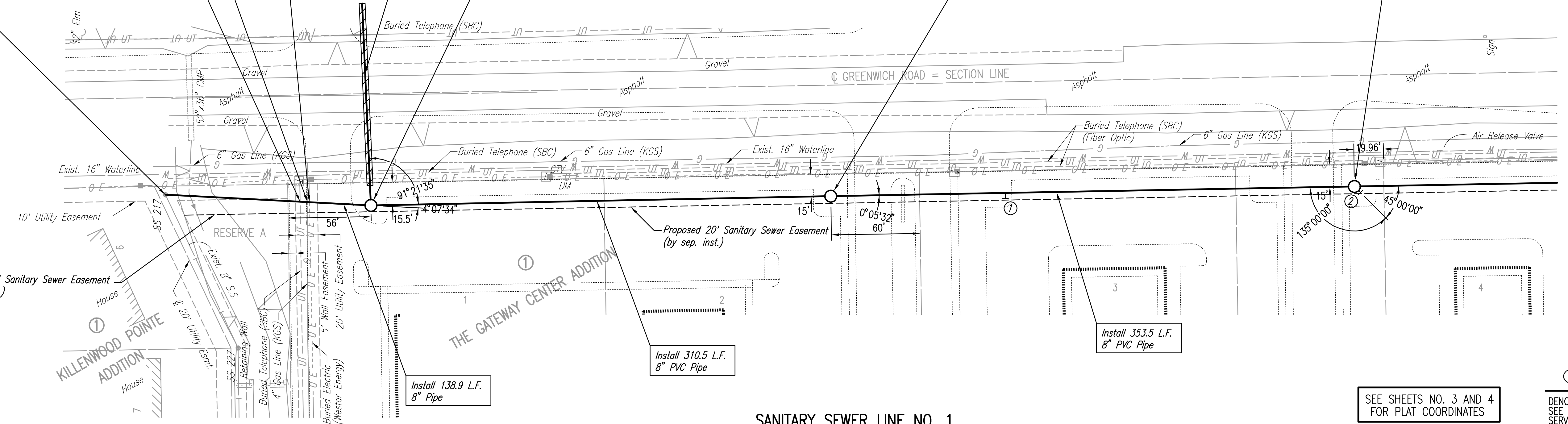
CAUTION !!!
Buried Electric
(Westar Energy)

CAUTION !!!
4" Gasline
(KGS)

N-1,693,087.0749, E-1,686,394.5867
Sta. 1+38.9
Construct MH 1
Standard MH (outside drop)

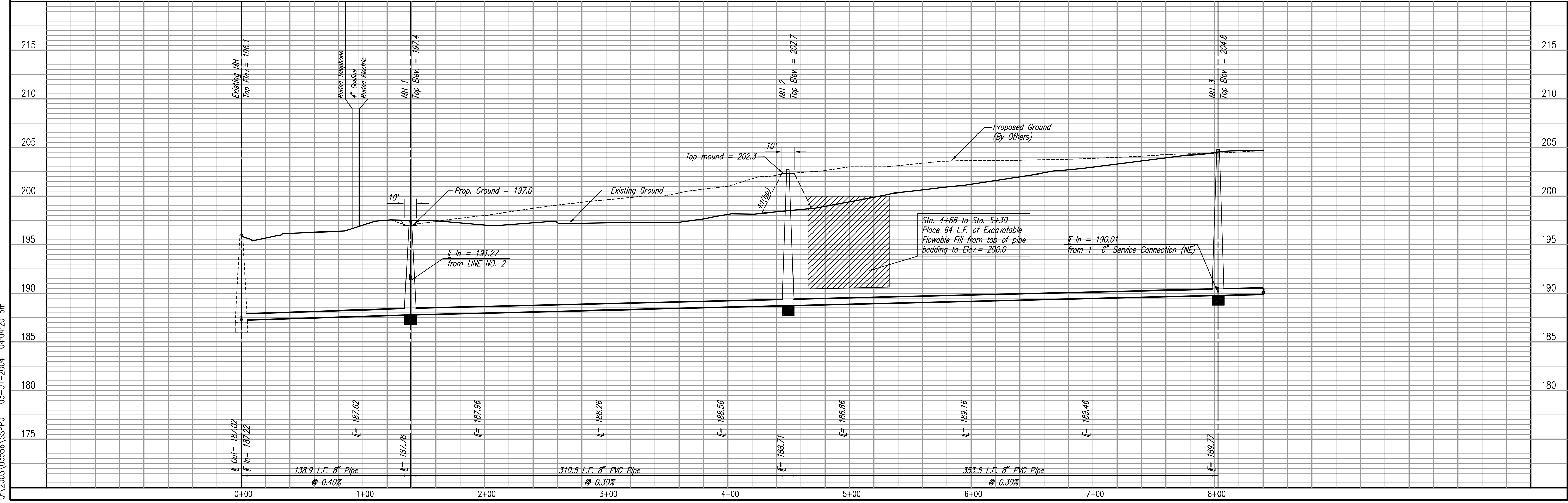
N-1,693,397.5183, E-1,686,388.3555
Sta. 4+49.4
Construct MH 2
Standard MH

N-1,693,750.9995, E-1,686,381.8298
Sta. 8+02.9
Construct MH 3
Standard MH



SANITARY SEWER LINE NO. 1

DATE	
BY	
CHECKED	CHECKED
PROFILE	



1 2 3
DENOTES SEWER SERVICE.
SEE SHEET NO. 18 FOR SEWER
SERVICE SCHEDULE AND DETAILS

DSNR: KJW OPER: TRO SCALE: 1=40.00
03/2003\035556\SSPPO1 03-01-2004 04:04:20 pm

SANITARY SEWER LINE NO. 1
LATERAL 361
FOUR MILE CREEK SEWER

Professional Engineering Consultants, P.A.
803 S. DORCA AVENUE, SUITE 202
316 262 2691 • FAX 316 262 3005
Designed By: KJW, ALA
Drawn By: CSL, TRO
Job No.: 03556-042
Date: DECEMBER 2003