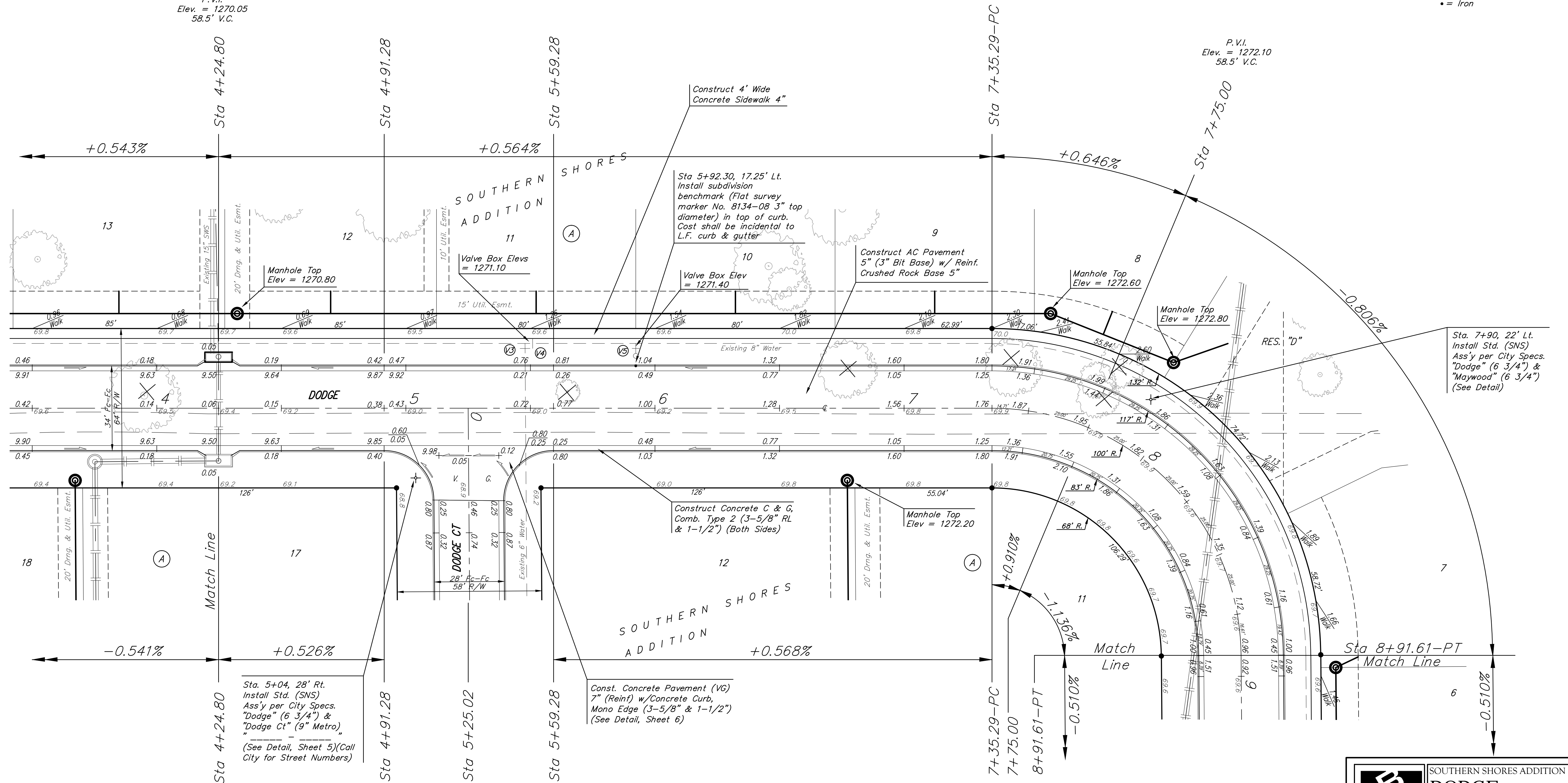
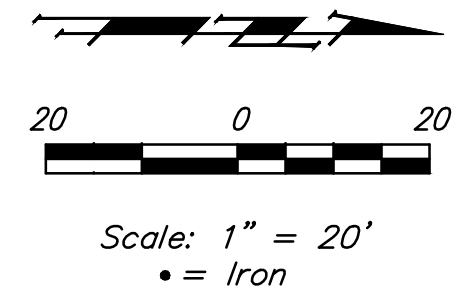


**BENCHMARKS:**

Chiseled Square Cut at Deflection Corner on Back of Walk, 84.7' South of the Northeast Corner of Lot 24, Block A, and 26.1' East-Northeast of the Most Northerly Deflection Corner in the East Line of Lot 24, Block A, Southern Shores Addition.  
Elevation = 1270.20 NAVD88

P.V.I.  
Elev. = 1270.05  
58.5' V.C.



Sta. 5+04, 28' Rt.  
Install Std. (SNS)  
Ass'y per City Specs.  
"Dodge" (6 3/4") &  
"Dodge Ct" (9" Metro).  
(See Detail, Sheet 5)(Call  
City for Street Numbers)

P.V.I.  
Elev. = 1270.05  
No V.C.

Const. Concrete Pavement (VG)  
7" (Reinf) w/Concrete Curb,  
Mono Edge (3-5/8" & 1-1/2")  
(See Detail, Sheet 6)

NOTE: ROLL TYPE CURB & GUTTER TO BE  
CONSTRUCTED ON THE PAVEMENT SHOWN ON  
THIS SHEET. TOP OF CURB ELEVATIONS  
ARE GIVEN FOR FULL HEIGHT CURB. DEDUCT  
0.25' FROM FULL HEIGHT CURB WHEN  
CONSTRUCTING ROLL TYPE CURB.



<b>B</b> Baughman		SOUTHERN SHORES ADDITION <b>DODGE</b> PAVING IMPROVEMENTS	
Baughman Company, P.A. 315 Ellis St., Wichita, KS 67211 P 316-262-2771 F 316-262-0149 ENGINEERING   SURVEYING   PLANNING   LANDSCAPE ARCHITECTURE			
PROJECT NUMBER 472-85172	DESIGN AEG	DRAWN TMS	DATE 08/14
REVISIONS:	APPROVED	SCALE Noted	SHEET 9 OF 29