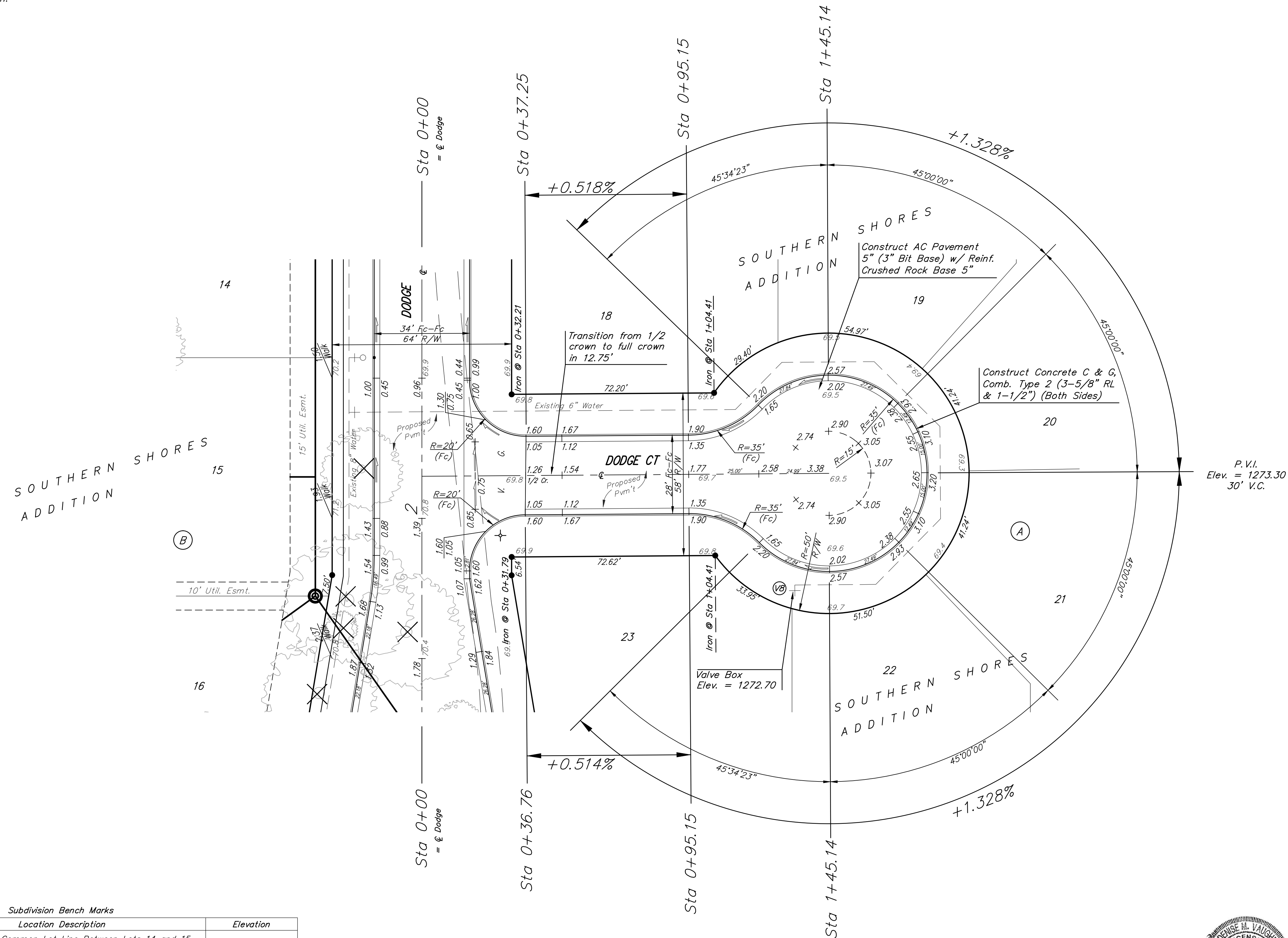
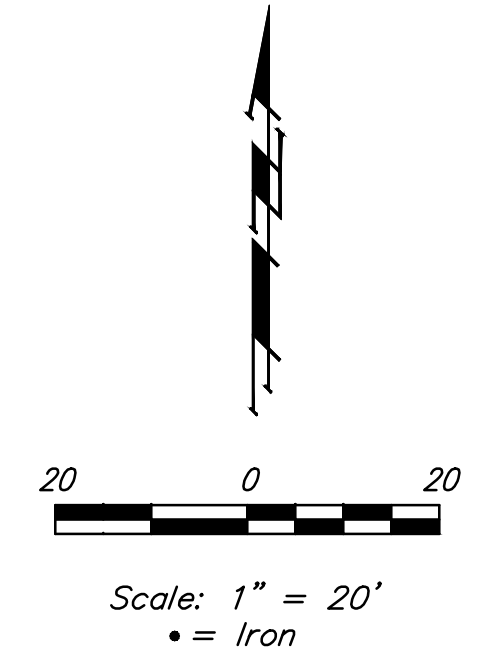
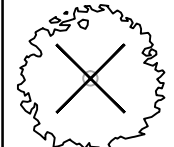



BENCHMARKS:

Chiseled Square Cut at Deflection Corner on Back of Walk, 84.7' South of the Northeast Corner of Lot 24, Block A, and 26.1' East-Northeast of the Most Northerly Deflection Corner in the East Line of Lot 24, Block A, Southern Shores Addition. Elevation = 1270.20 NAVD88




 Indicates tree to be removed by contractor. To be paid for as lump sum bid item "Site Clearing"

 All other trees shall remain and be protected from damage during construction. Overhanging limbs shall be trimmed by the Contractor only as necessary for construction and with approval of the Engineer. Cost of tree trimming to be included in bid item "Site Clearing"

Subdivision Bench Marks		
Street & Station	Location Description	Elevation
Dodge 2+57.30, 17.25' Lt.	Adjacent to Common Lot Line Between Lots 14 and 15, Block B on Dodge.	
Dodge 5+92.30, 17.25' Lt.	Adjacent to Common Lot Line Between Lots 10 and 11, Block B on Dodge.	
Maywood Ct 2+22.70, 14.25' Lt.	Adjacent to Fire Hydrant at S. End of W. Curb Return of Maywood & Maywood Ct.	

NOTE: ROLL TYPE CURB & GUTTER TO BE CONSTRUCTED ON THE PAVEMENT SHOWN ON THIS SHEET. TOP OF CURB ELEVATIONS ARE GIVEN FOR FULL HEIGHT CURB. DEDUCT 0.25' FROM FULL HEIGHT CURB WHEN CONSTRUCTING ROLL TYPE CURB.



	SOUTHERN SHORES ADDITION	
	DODGE CT STREET IMPROVEMENTS	
<small>Baughman Company, P.A. 315 Ellis St., Wichita, KS 67211 P 316-262-7271 F 316-262-0149 ENGINEERING SURVEYING PLANNING LANDSCAPE ARCHITECTURE</small>		
PROJECT NUMBER 472-85172	DESIGN AEG	DRAWN TMS
REVISIONS:	APPROVED	DATE 08/14
	SCALE Noted	SHEET 11 OF 29