

1-1

LONGFORD

DOUGLAS

LINDEN

8427

8801

9111

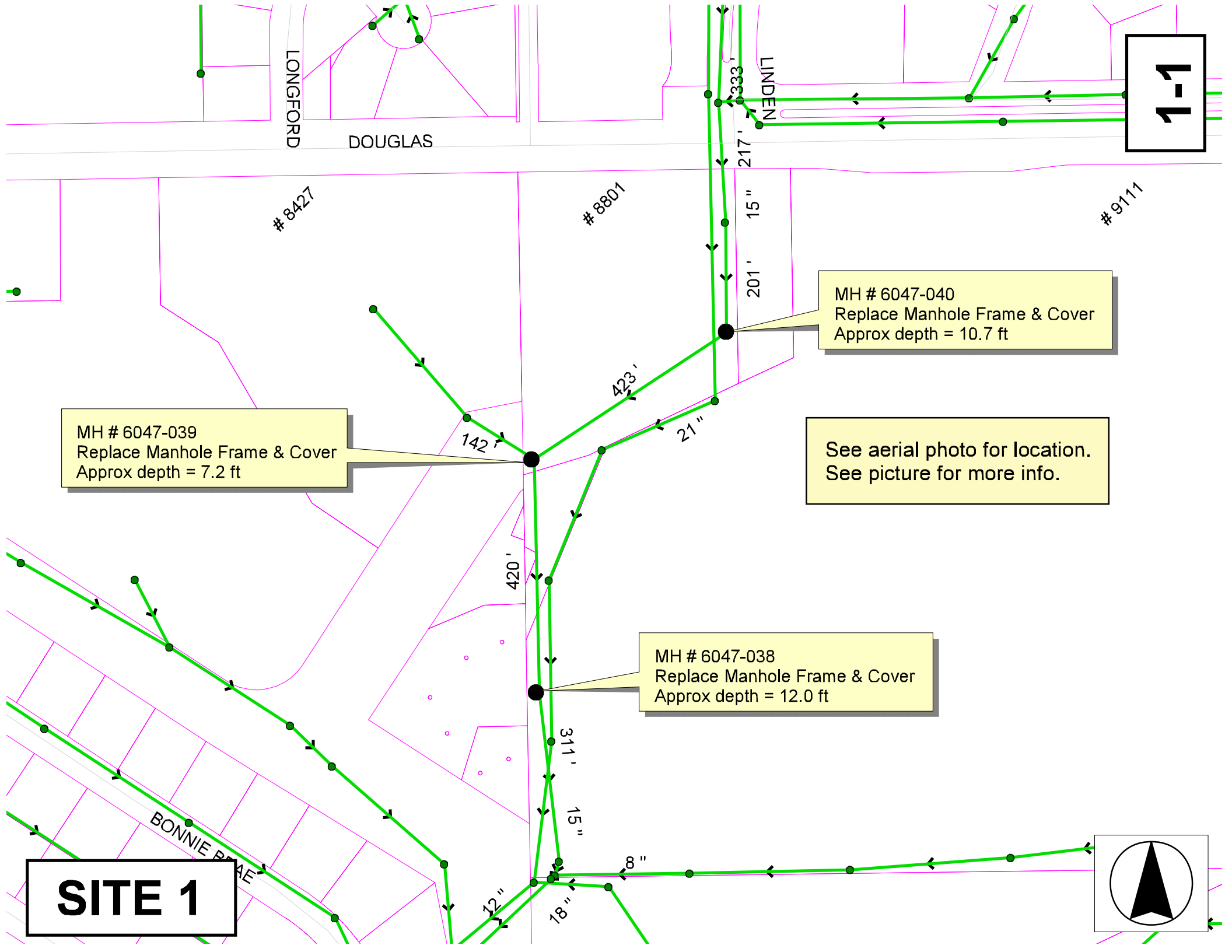
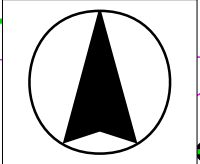
MH # 6047-040
Replace Manhole Frame & Cover
Approx depth = 10.7 ft

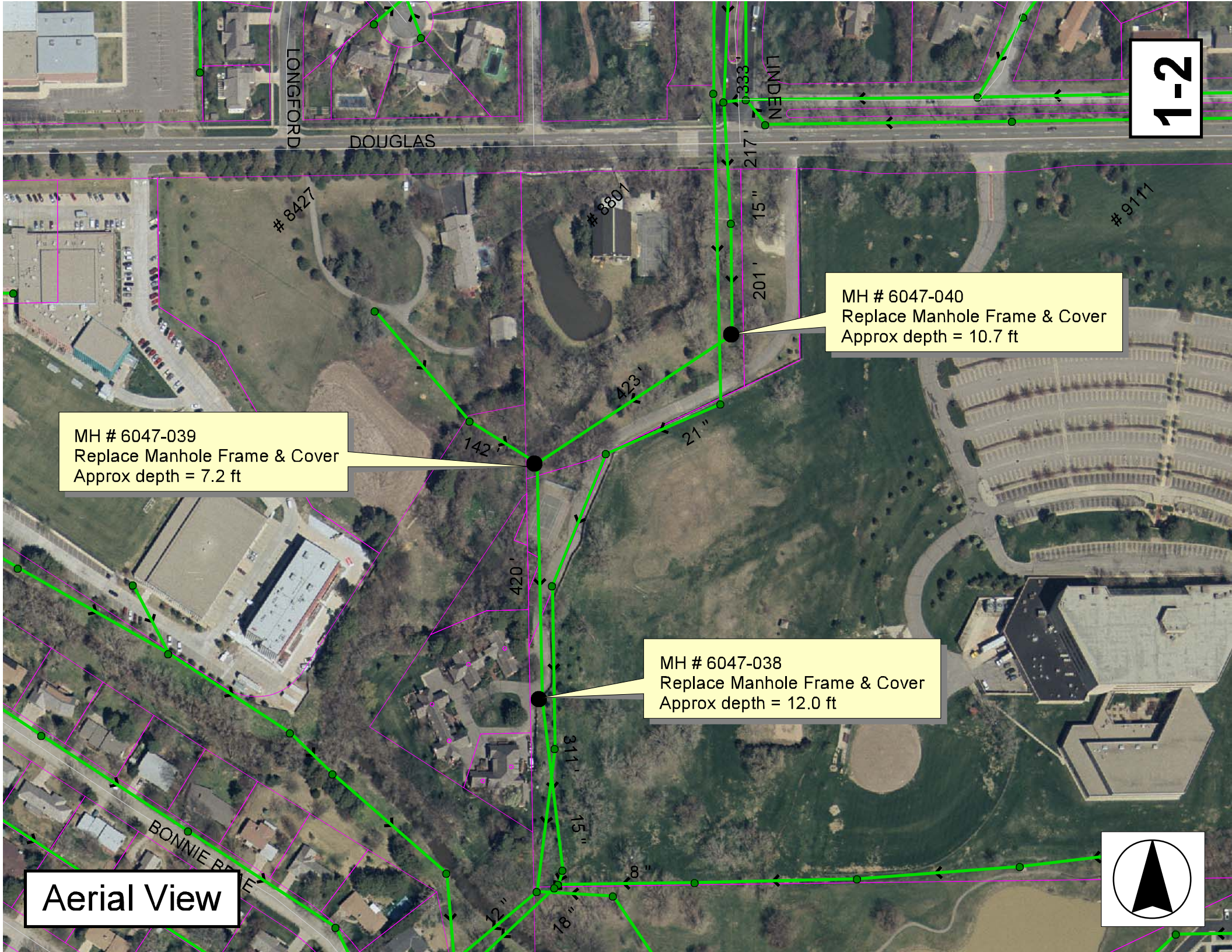
MH # 6047-039
Replace Manhole Frame & Cover
Approx depth = 7.2 ft

See aerial photo for location.
See picture for more info.

MH # 6047-038
Replace Manhole Frame & Cover
Approx depth = 12.0 ft

SITE 1



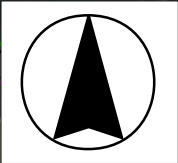


MH # 6047-039
Replace Manhole Frame & Cover
Approx depth = 7.2 ft

MH # 6047-040
Replace Manhole Frame & Cover
Approx depth = 10.7 ft

MH # 6047-038
Replace Manhole Frame & Cover
Approx depth = 12.0 ft

Aerial View





I'm standing east of MH 6047-039, looking west. This is the only manhole that we painted up for you. If this gets covered, the tree is painted also. It is located northwest of the northwest corner of the tennis courts. The concrete across the creek appears to line up with the pipe that comes into this manhole from the west.

In general, the manholes are mapped correctly on the aerial photo. All are visible.

MH 6047-038 is located at the west side of a fence, in front of the cluster of homes there.

MH 6047-040 is located due south of a large pile of dirt from a previous point repair.