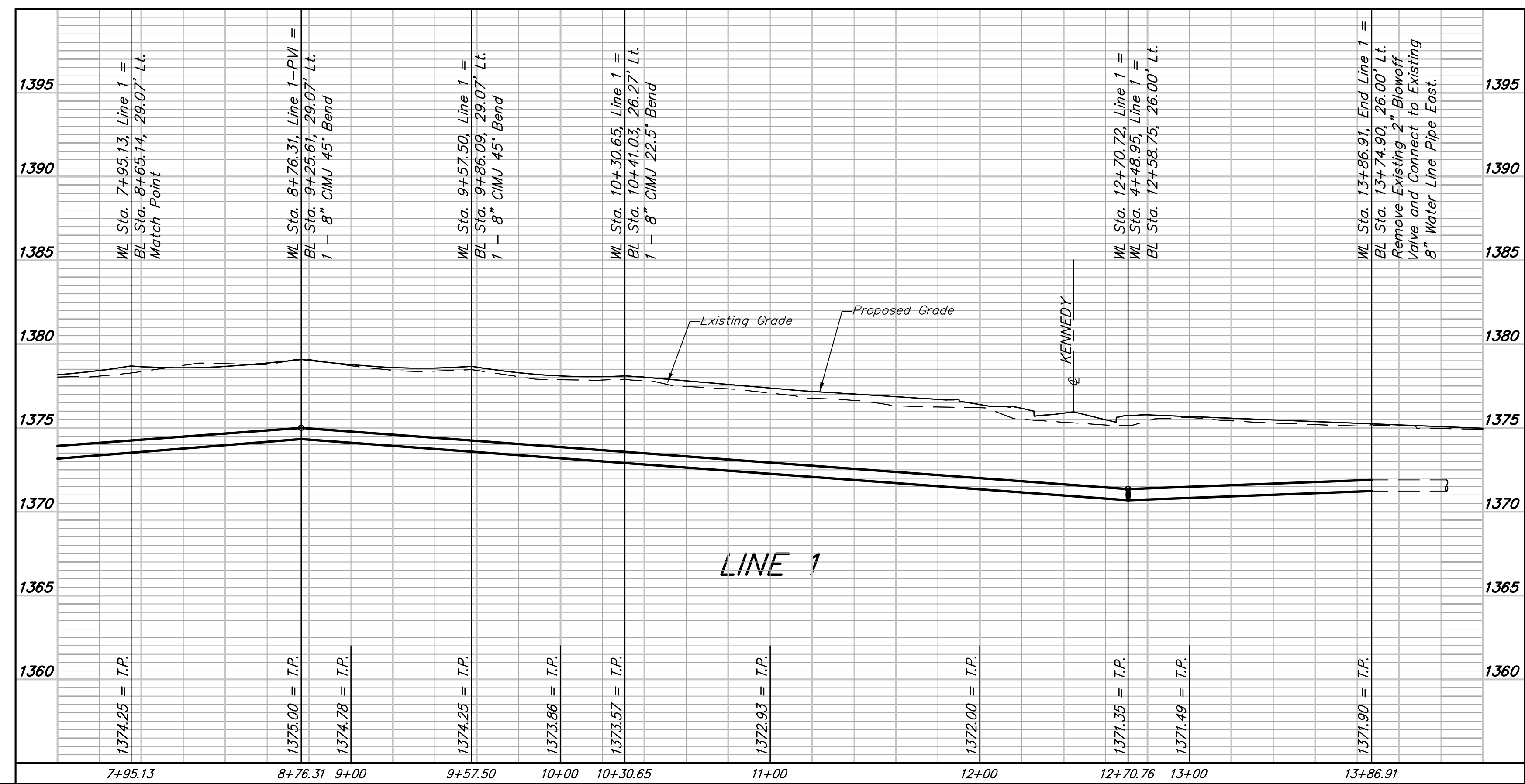
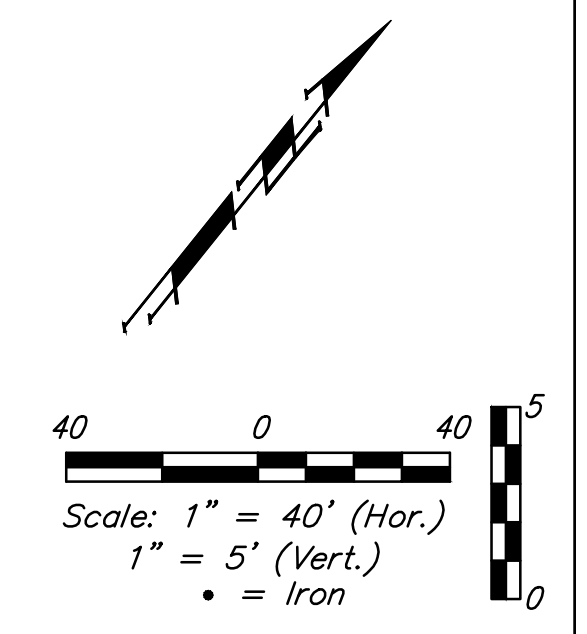
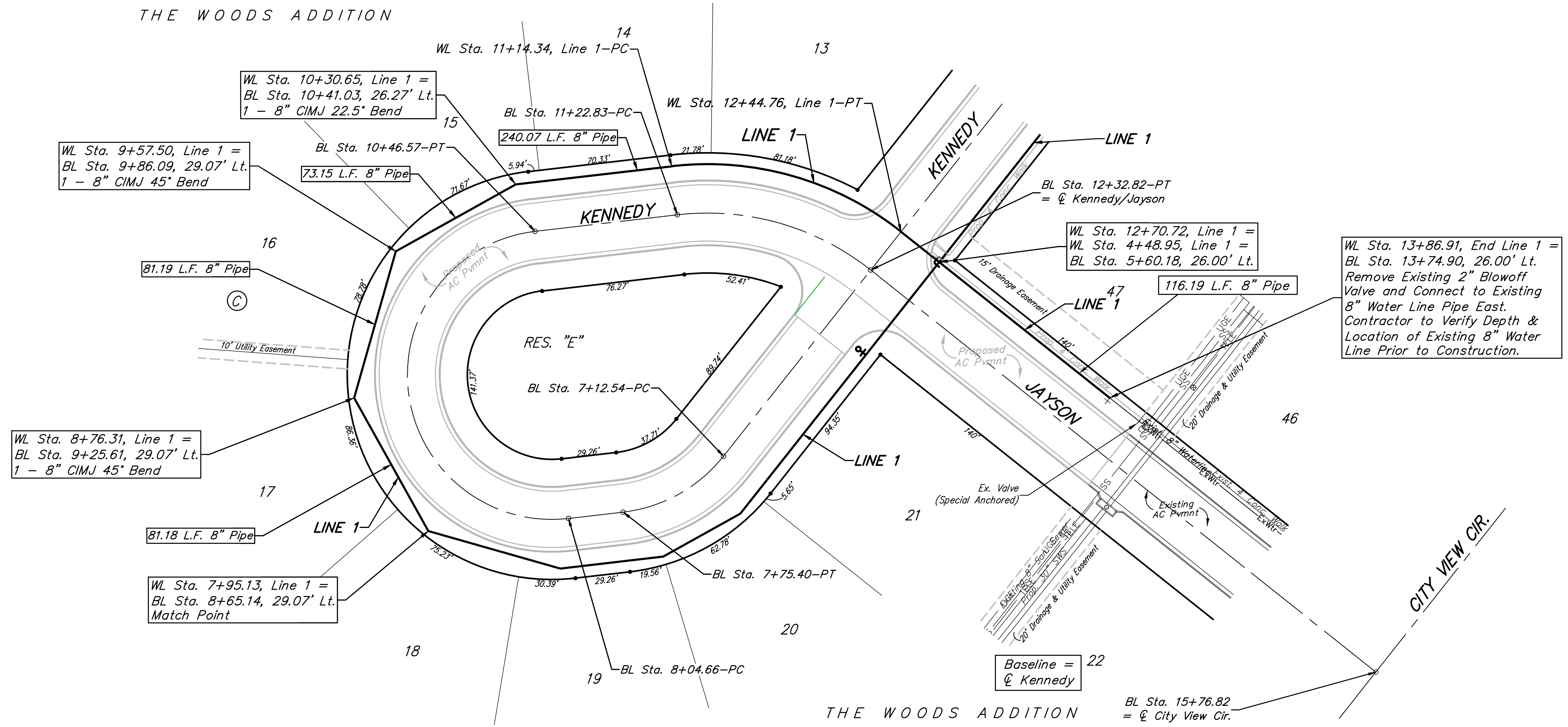


**BENCHMARKS:**  
 BM #1: City of Wichita Benchmark Disc, top of curb adjacent to fire hydrant, west end of north curb return, intersection of Fawnwood and Kennedy, south corner of Lot 11, Block D, The Woods Addition.  
 Elev. = 1382.28 NGVD29

BM #2: City of Wichita Benchmark Disc, Top of curb top of curb adjacent to fire hydrant, east end of north curb return, intersection of Fawnwood and Kennedy, southwest corner of Lot 53, Block B, The Woods Addition.  
 Elev. = 1378.78 NGVD29

BM #3: City of Wichita Benchmark Disc, Top of curb top of curb adjacent to fire hydrant at west end of north curb return, intersection of Jayson and City View Cir, southeast corner of Lot 46, Block B, The Woods Addition.  
 Elev. = 1378.78 NGVD29



<b>B</b> Baughman	The Woods Addition - Phase 5	
	<b>LINE 1</b> Water Distribution System	
Baughman Company, P.A. 315 Ellis St., Wichita, KS 67211 P 316-262-7271 F 316-262-0149 ENGINEERING   SURVEYING   PLANNING   LANDSCAPE ARCHITECTURE		
PROJECT NUMBER 448-90506	DESIGN AEG	DRAWN JAK
REVISIONS:	APPROVED	DATE 8/28/14
	SCALE Noted	SHEET
	<b>5 OF 12</b>	
E:\Projects\The Woods Addition\Phase 5\Wtr_14-05-E067\WTR_PLANS.dwg		