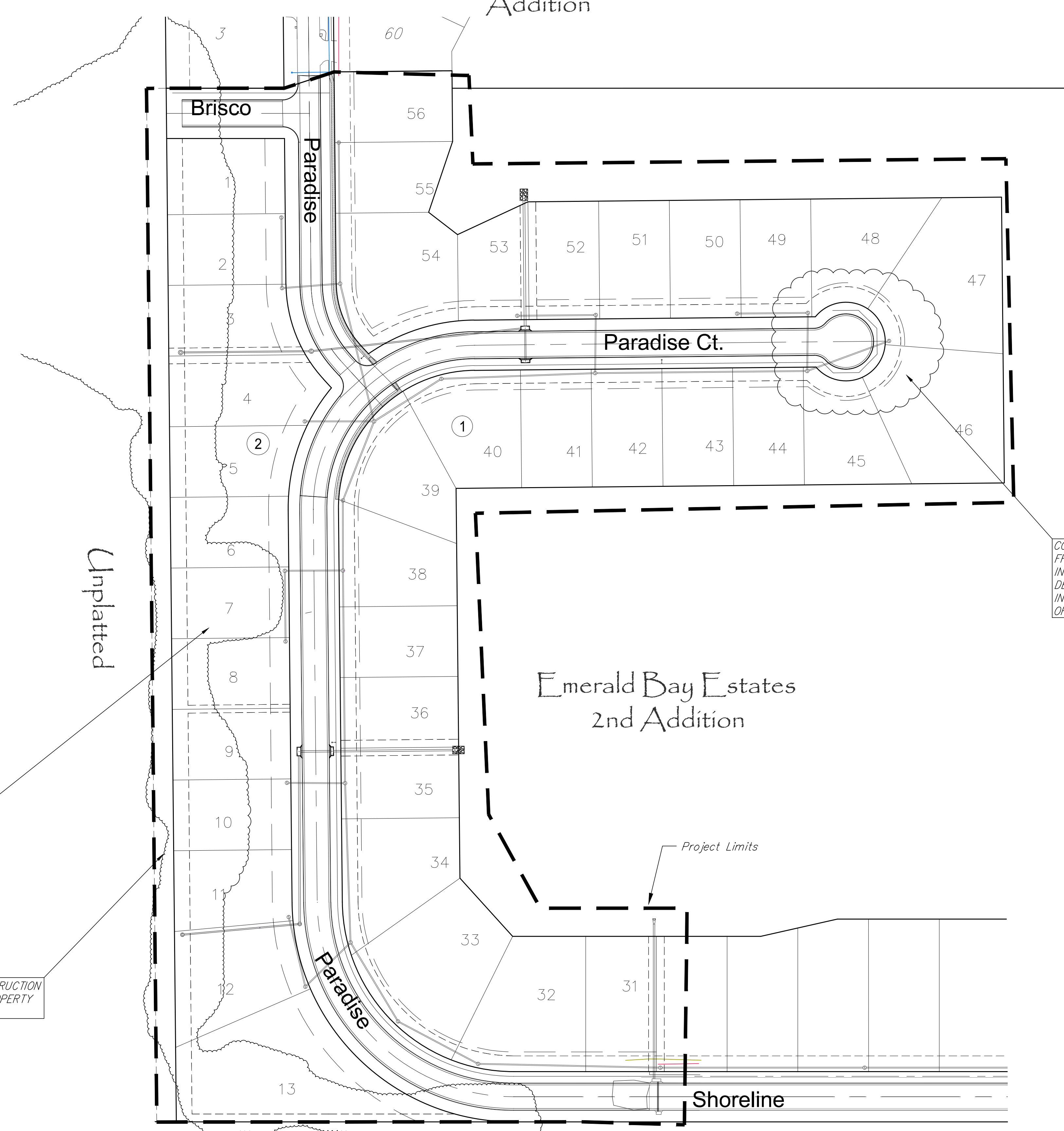


Emerald Bay Estates
Addition



Unplanted

ALL TREES WITHIN THE PROJECT LIMITS ARE TO BE REMOVED AND DISPOSED.

ALL TREES WITHIN THE 25' CONSTRUCTION EASEMENT ON THE ADJACENT PROPERTY ARE TO BE REMOVED.

CONTRACTOR TO COORDINATE WITH J. SCOTT FROMME WITH THE WICHITA FIRE DEPARTMENT IN REGARDS TO BURNING. THE CITY FIRE DEPARTMENT HAS AGREED TO ALLOW BURNING IN THIS AREA WITH AN ABOVE GRADE ROLL OFF BIN STYLE AIR CURTAIN BURNER.

Existing Trees

Emerald Bay Estates
2nd Addition

Emerald Bay 2nd Addition Phase 4
Site Grading



RUGGLES & BOHM
ENGINEERING | SURVEYING | LANDSCAPE ARCHITECTURE | GOVERNMENT

324 NORTH MAIN WICHITA, KANSAS 67203 P (316) 264-8008 F (316) 264-4621
WWW.RKANSAS.COM

PROJECT NUMBER: 472-85171 RB JOB NO.: 4306E DWG. SCALE: Eng Base (SS Line 1)

DATE: July 11, 2014
DESIGN: EJJG
DRAWN: EJJG
REVIEW: EJJG
SHEET: 7A
OF: 34