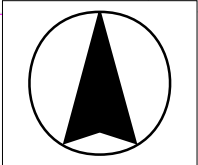


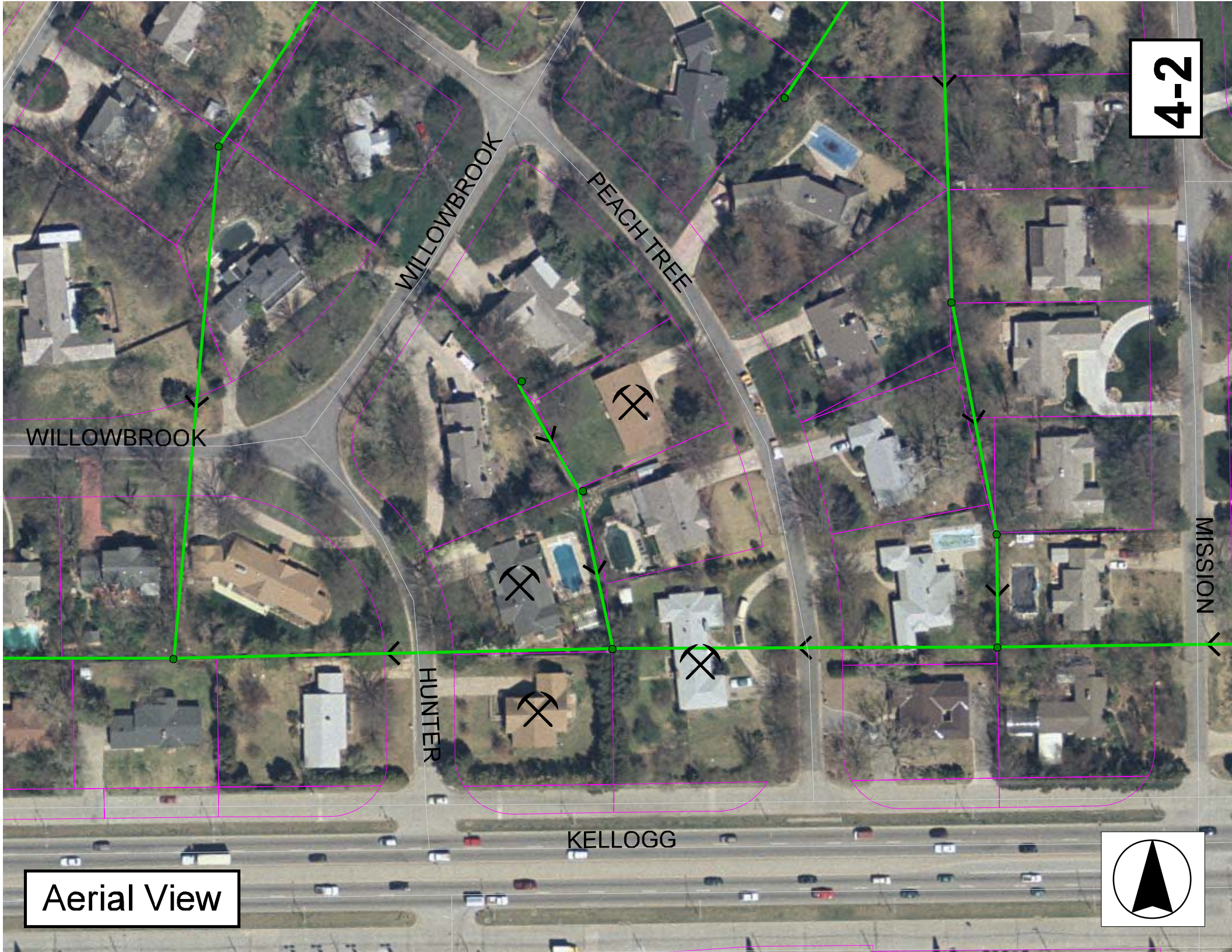
**POINT REPAIR:**  
Remove and replace 5 lf of pipe from the wall of MH 5947-120 to 5 lf north of the manhole.

MH # 5947-121  
Approx depth = 9.3 ft

MH # 5947-120  
Approx depth = 10.9 ft

MH # 5947-119





WILLOWBROOK

WILLOWBROOK

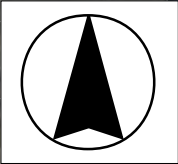
PEACH TREE

HUNTER

KELLOGG

MISSION

Aerial View



# Television Inspection Master Report

12/8/2003  
1:28:50PM

US Manhole: 5947-121  
DS Manhole: 5947-120

20 E WILLOWBROOK ST  
15 E PEACH TREE ST

Date Insp: 8/26/2002

Basin: E04F

Dir Televised: Downstream To Upstream

## Pipe Information

Shape: Round	Length Status:	Project No.: G-238
Dia/Ht Width: 8	Material: VCP	Index:
Length: 103.5	Slope: 0.400	Surface:
Pipe Sec Length: Comment:		

## Inspection Information

Crew: 694	Percent Full: 15	Tape ID: V-3543
Weather: Sunny	Purpose: TV Existing Line	Counter Start: 1:50.49
Surface Cond: Trees & Fences	Flow: Normal Flow	Counter Stop:
Dyed Test: No		

### Maintenance Prior to TV:

Cleaned: 0	Degrease: 0	Point Repair: 0	Manhole Replace: 0
Root Cut: 0	Root Chem: 0	Other:	

Overall Cond:	<u>Total</u>	<u>Remaining</u>	<u>Rating</u>
Collapsed/Blk: N	97	97	93.3
Max Obs #: 15	Flow: 0.058	0.058	0.056
Max Obs Length: 104.0	Cleaning: 0	0	0.0
Comment:			

Obs. #	VTR Counter Comment	Dist	Location	Description	Rating	Obsrvd (gpm)	Est. (gpm)	Ratings Struct	Clean	Remain (gpm)
1		0.0	DS Manhole 5947-120 / tv against the flow							
2		3.0	Joint	Offset	3		0.010	20	0	0.010
				(offset against the flow / causing water to collect upstream of the joint)						
3		31.0	Joint	Offset	3		0.010	20	0	0.010
4		55.0	Quad 1 / U-Rt	Crack-Horizontal	3		0.004	5	0	0.004
5		56.0	West	Pipe Seal						0.000
6		58.0	East	Break-In Conn	1		0.001	0	0	0.001
			13 PEACHTREE (THIS WAS SEALED OFF IN OCTOBER, 2003 / VACANT LOT)							
7		58.0	West	Break-In Conn	1		0.001	0	0	0.001
			22 HUNTER							
8		64.0	Joint	Offset	3		0.010	20	0	0.010
9		71.0	Joint	Offset	3		0.010	20	0	0.010
10		93.0	West	Pipe Seal						0.000
11		96.0	East	Pipe Seal						0.000
12		96.0	Quad 2 / L-Rt	Crack-Horizontal	3		0.004	5	0	0.004
13		98.0	East	Break-In Conn	3		0.004	2	0	0.004
			20 PEACHTREE / roots / jagged tap							
14		101.0	Crown	Crack-Radial	3		0.004	5	0	0.004
15		104.0	US Manhole 5947-121							0.000

4-3



Manhole 5947-120 is located in the very northwest corner of 15 Peachtree.

I'm standing in the vacant lot north of the manhole, looking south. The green flag indicates the location of the pipe. The utility pole is very close to the sewer pipe. The offset joint here needs to be fixed in order to line the pipe in the future.