

**POINT REPAIR:**  
Remove and replace 20 lf of 8" pipe from the wall of MH 5449-342 to 20 lf north of MH 5449-342. Removal and replacement of concrete pavement shall be incidental.

**NOTE:** Removal and replacement of concrete pavement related to replacing the frame & cover on MH 5449-343 and MH 5449-342 shall be incidental.

**MH # 5449-343**  
Replace Manhole Frame & Cover  
Rework Manhole Bench & Invert  
Approx depth = 5.9 ft

**MH # 5449-342**  
Replace Manhole Hole Frame & Cover  
Rework Manhole Bench & Invert  
Approx depth = 6.2 ft

MH 5449-344

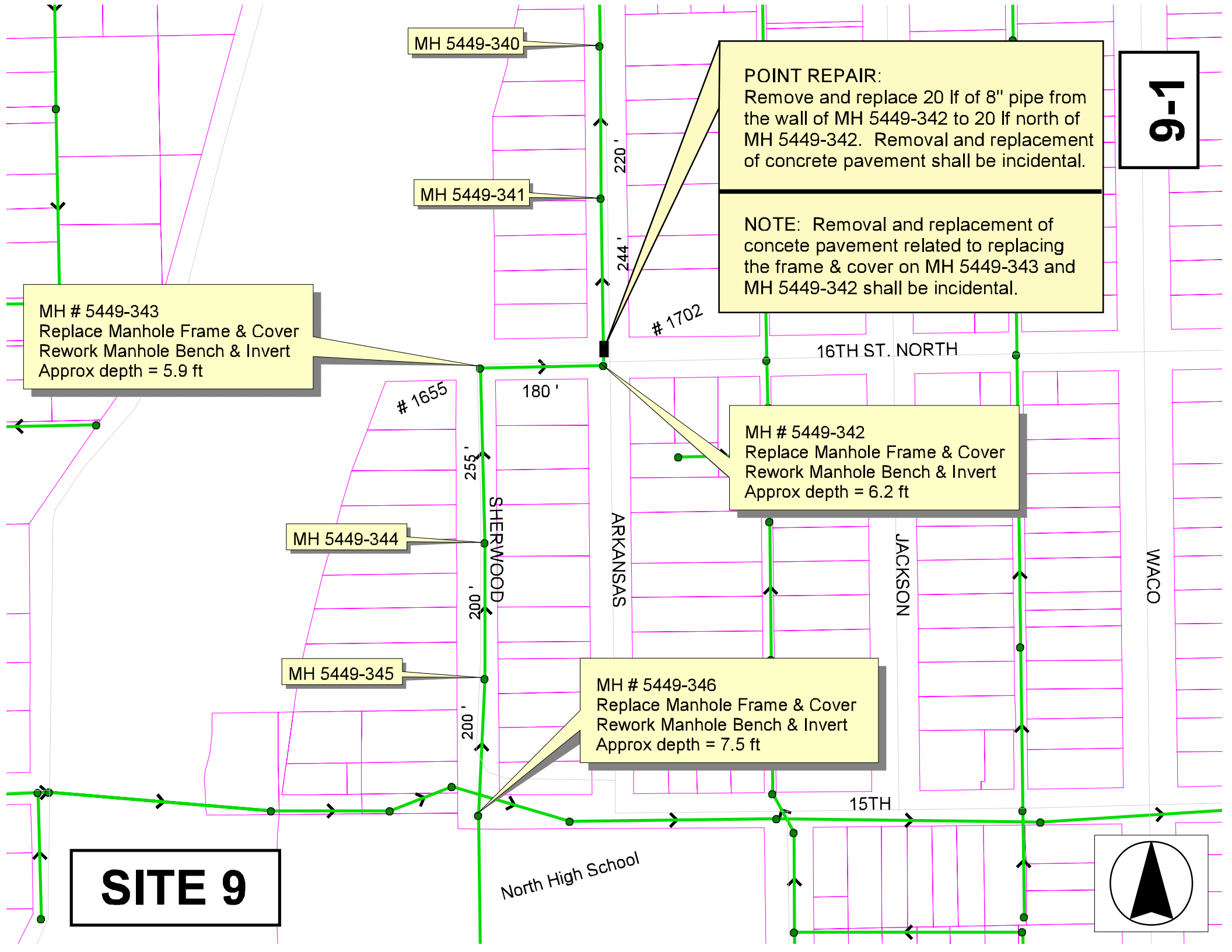
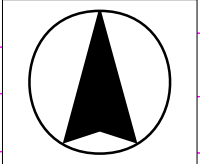
MH 5449-345

**MH # 5449-346**  
Replace Manhole Frame & Cover  
Rework Manhole Bench & Invert  
Approx depth = 7.5 ft

MH 5449-340

MH 5449-341

**SITE 9**



9-2

ARKANSAS RIVER

SHERWOOD

ARKANSAS

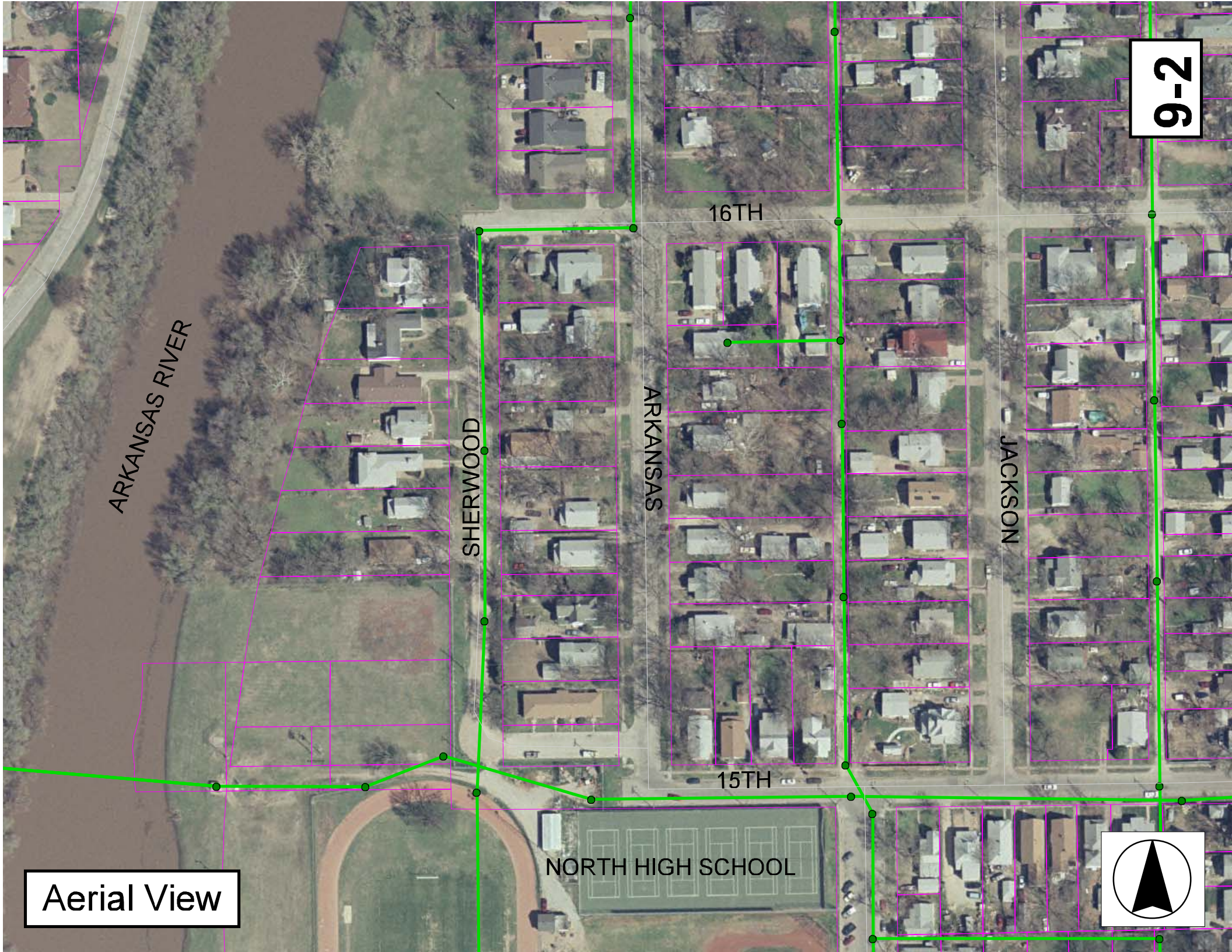
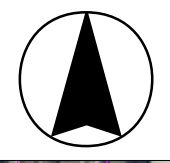
JACKSON

16TH

15TH

NORTH HIGH SCHOOL

Aerial View



# Television Inspection Master Report

12/9/2003  
11:14:01AM  
C03F

US Manhole: 5449-342  
DS Manhole: 5449-341

1657 N ARKANSAS ST  
1723 N ARKANSAS AVE

Date Insp: 1/7/2003

Basin:

Dir Televised: Upstream To Downstream

## Pipe Information

Shape:	Round	Length Status:	Project No.:	D-071
Dia/Ht Width:	8 0	Material:	Index:	
Length:	244.5	Slope:	Surface:	
Pipe Sec Length:	Comment:			

## Inspection Information

Crew:	696	Percent Full:	15	Tape ID:	V-3750
Weather:	Sunny	Purpose:	TV Existing Line	Counter Start:	1.53.15.
Surface Cond:	N/A	Flow:	Normal Flow	Counter Stop:	2.21.44.
Dyed Test:	No				

Obs. #	VTR Counter Comment	Dist	Location	Description	Rating	Obsrvd (gpm)	Est. (gpm)	Ratings		
								Struct	Clean	Remain (gpm)
1		0.0	US Manhole 5449-342							
2		6.0	Crown	Broken Pipe						
<b>THIS LINE DROPS TO A SAG AT THIS LOCATION / MUST BE REPLACED</b>										
It's hard to tell when the camera comes out of the sag due to the use of the power cleaner, but it looks like pipe is OK at 20 ft north of the manhole										
16		9.0		Crack-Radial						0.000
3		28.0	Quad 3 / L-Lt	Crack-Horizontal	1		0.001	1	0	0.001
4		41.0	Quad 1 / U-Rt	Broken Pipe	2		0.008	44	0	0.008
5		44.0	Crown	Crack-Radial	1		0.001	1	0	0.001
6		46.0	Quad 1 / U-Rt	Scaling	1		0.000	0	0	0.000
7		48.0	Crown	Crack-Horizontal	1		0.001	1	0	0.001
8		49.0	Crown	Crack-Radial	1		0.001	1	0	0.001
9		52.0	West	Pipe Seal	1		0.000	0	0	0.000
10		69.0	Quad 4 / U-Lt	Crack-Horizontal	1		0.001	1	0	0.001
11		76.0	West	Pipe Seal	1		0.000	0	0	0.000
12		79.0	West	Break-In Conn	1		0.001	0	0	0.001
13		90.0	Quad 4 / U-Lt	Crack-Radial	1		0.001	1	0	0.001
14		94.0	Crown	Broken Pipe / THIS APPEARS TO BE AN OLD REPAIR.						
15		99.0	West	Break-In Conn	1		0.001	0	0	0.001
17		115.0	Quad 2 / L-Rt	Broken Pipe	1		0.004	30	0	0.004
18		123.0	West	Wye Service / THIS WYE APPEARS SEALED OFF NOT SURE						
19		124.0	Quad 4 / U-Lt	Crack-Horizontal	1		0.001	1	0	0.001
20		147.0	West	Pipe Seal	1		0.000	0	0	0.000
21		170.0	West	Pipe Seal	1		0.000	0	0	0.000
22		172.0	West	Break-In Conn	1		0.001	0	0	0.001
23		178.0	Invert	Broken Pipe	2		0.008	44	0	0.008
24		183.0	Invert	Crack-Horizontal	1		0.001	1	0	0.001
25		191.0	Invert	Crack-Horizontal	1		0.001	1	0	0.001
26		193.0	West	Break-In Conn	1		0.001	0	0	0.001
27		194.0	Quad 2 / L-Rt	Crack-Horizontal	2		0.002	2	0	0.002
28		203.0	Quad 2 / L-Rt	Crack-Horizontal	1		0.001	1	0	0.001
29		217.0	West	Pipe Seal	1		0.000	0	0	0.000
30		226.0	Quad 4 / U-Lt	Crack-Horizontal	1		0.001	1	0	0.001
31		238.0	West	Pipe Seal	1					0.000
32		239.0	Quad 2 / L-Rt	Crack-Horizontal	1		0.001	1	0	0.001
33		244.0	DS Manhole / 5449-341							

9-3