

UNIVERSITY

Install 227 lf of 8" Cured-in-Place Liner from MH 5346-145 to 5346-143

MH # 5346-143  
Approx depth = 6.7 ft

MH # 5346-144  
Approx depth = 6.5 ft

MH # 5346-145  
Approx depth = 6.3 ft

ELIZABETH

MARTINSON

KELLOGG

# 1305 # 1303

# 621

134'

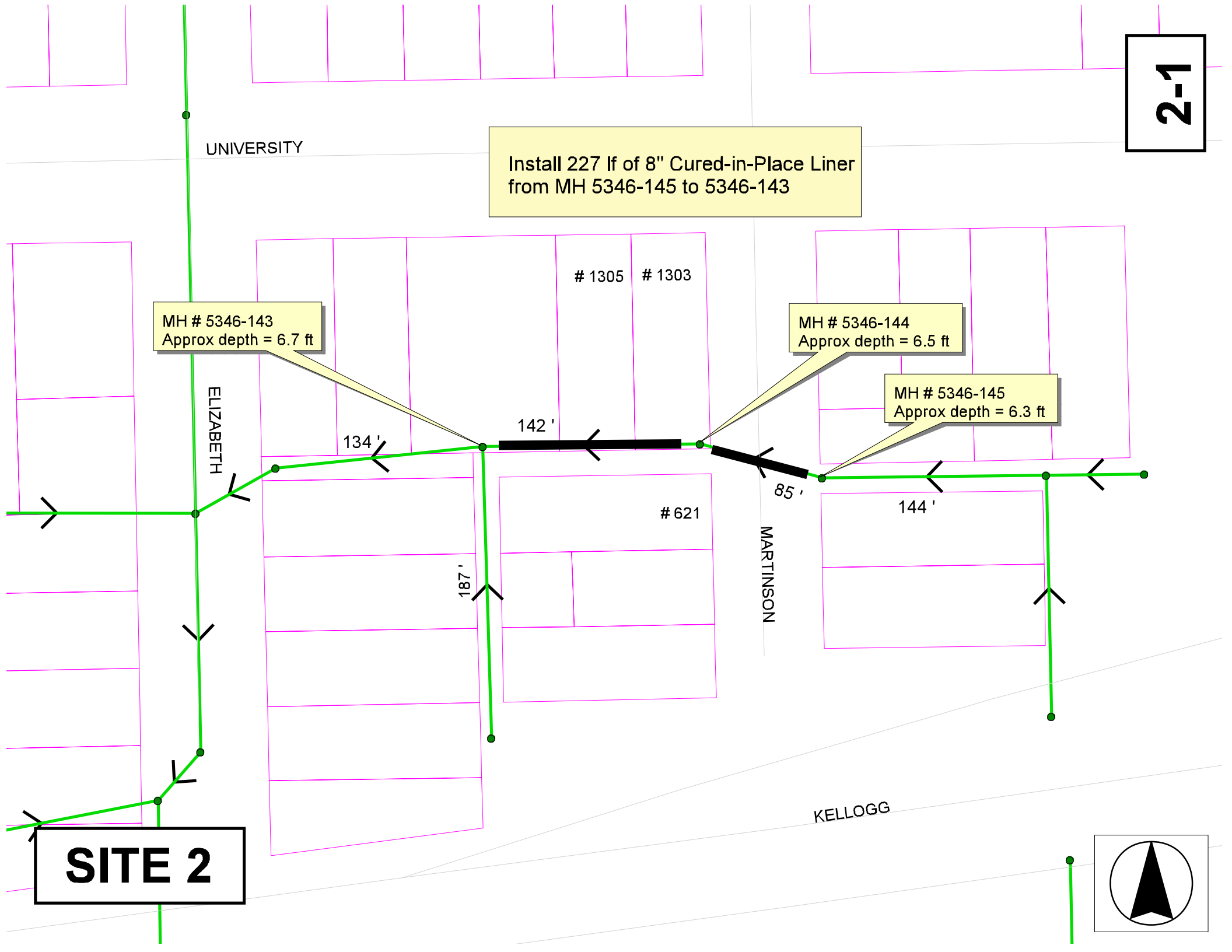
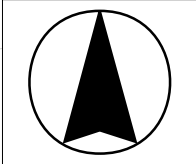
142'

85'

144'

187'

SITE 2



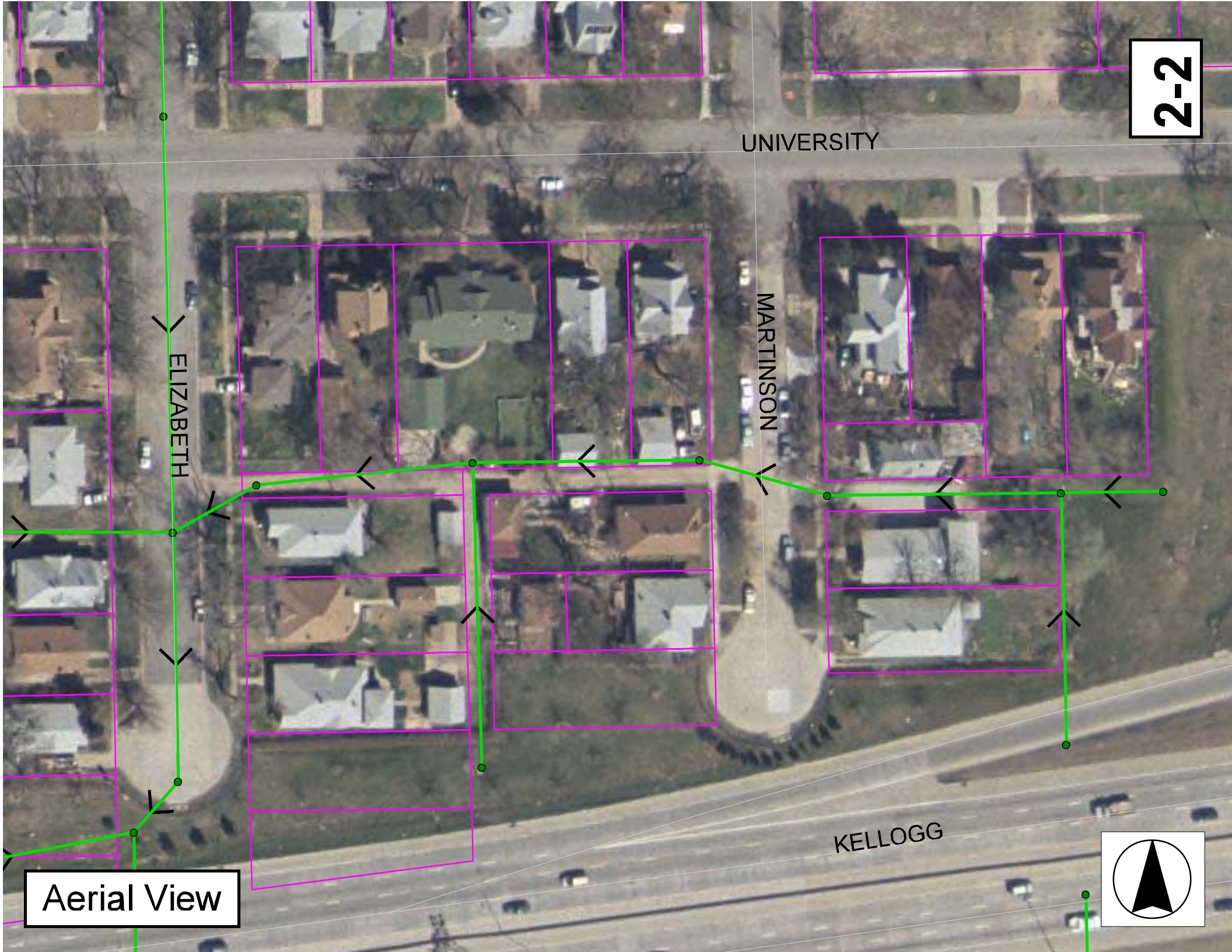
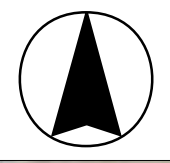
UNIVERSITY

ELIZABETH

MARTINSON

KELLOGG

Aerial View



# Television Inspection Master Report

11/24/2003  
8:44:03AM  
C07G

US Manhole: 5346-145  
DS Manhole: 5346-144

618 S MARTINSON AVE  
1303 W UNIVERSITY ST

Date Insp: 10/17/2002

Basin:

Dir Televised: Upstream To Downstream

## Pipe Information

Shape: Round  
Dia/Ht Width: 8  
Length: 85.0  
Pipe Sec Length:

Comment:

Length Status:  
Material: VCP  
Slope: 0.306

Project No.: B-050  
Index:  
Surface:

## Inspection Information

Crew: 692  
Weather: Sunny  
Surface Cond: N/A  
Dyed Test: No

Percent Full: 10  
Purpose: TV Existing Line  
Flow: Normal Flow

Tape ID: 3598  
Counter Start: 12.56  
Counter Stop:

| Obs. # | VTR Counter Comment      | Dist | Location   | Description | Rating | Obsrvd (gpm) | Est. (gpm) | Ratings |       |              |       |
|--------|--------------------------|------|------------|-------------|--------|--------------|------------|---------|-------|--------------|-------|
|        |                          |      |            |             |        |              |            | Struct  | Clean | Remain (gpm) |       |
| 1      |                          | 0.0  | US Manhole | 5346-145    |        |              |            |         |       |              | 0.000 |
| 2      |                          | 28.0 | Joint      | Other       | 1      |              | 0.000      | 0       | 0     |              | 0.000 |
|        | PVC PIPE BEGINS          |      |            |             |        |              |            |         |       |              |       |
| 3      |                          | 39.0 | Joint      | Other       | 2      |              | 0.000      | 0       | 0     |              | 0.000 |
|        | PVC PIPE ENDS--SMALL GAP |      |            |             |        |              |            |         |       |              |       |
| 4      |                          | 44.0 | Crown      | Broken Pipe | 2      |              | 0.008      | 44      | 0     |              | 0.008 |
| 5      |                          | 71.0 | Crown      | Broken Pipe | 2      |              | 0.008      | 44      | 0     |              | 0.008 |
| 6      |                          | 82.0 | DS Manhole |             |        |              |            |         |       |              | 0.000 |

2-3

# Television Inspection Master Report

11/24/2003  
8:44:03AM

**US Manhole:** 5346-144  
**DS Manhole:** 5346-143

1303 W UNIVERSITY ST  
620 S ELIZABETH AVE

**Date Insp:** 10/23/2002

**Basin:** C07G

**Dir Televised:** Upstream To Downstream

## Pipe Information

Shape: Round  
Dia/Ht Width: 8  
Length: 142.0  
Pipe Sec Length:

Length Status:  
Material: VCP  
Slope: 0.007

Project No.: B-049  
Index:  
Surface:

Comment:

## Inspection Information

Crew: 692  
Weather: Rainy  
Surface Cond: N/A  
Dyed Test: No

Percent Full: 10  
Purpose: TV Existing Line  
Flow: Normal Flow

Tape ID: 3598  
Counter Start: 19.07  
Counter Stop:

| Obs. # | VTR Counter Comment | Dist        | Location                      | Description          | Rating | Obsrvd (gpm) | Est. (gpm) | Ratings Struct | Clean | Remain (gpm) |
|--------|---------------------|-------------|-------------------------------|----------------------|--------|--------------|------------|----------------|-------|--------------|
| 1      |                     | 0.0         | US Manhole 5346-144           |                      |        |              |            |                |       | 0.000        |
| 2      |                     | 13.0        | North                         | Wye Service / Sealed | 1      |              | 0.000      | 0              | 0     | 0.000        |
| 3      |                     | 16.0        | Quad 2 / L-Rt                 | Crack-Radial         | 3      |              | 0.004      | 5              | 0     | 0.004        |
| 4      |                     | 31.0        | Crown                         | Broken Pipe          | 3      |              | 0.010      | 60             | 0     | 0.010        |
| 5      |                     | 33.0        | Crown                         | Broken Pipe          | 3      |              | 0.010      | 60             | 0     | 0.010        |
| 6      |                     | <b>36.0</b> | <b>North</b>                  | <b>Wye Service</b>   | 2      |              | 0.000      | 0              | 0     | 0.000        |
|        |                     |             | <b>Located under a garage</b> |                      |        |              |            |                |       |              |
| 7      |                     | 37.0        | Crown                         | Broken Pipe          | 2      |              | 0.008      | 44             | 0     | 0.008        |
| 8      |                     | 38.0        | Crown                         | Crack-Horizontal     | 3      |              | 0.004      | 5              | 0     | 0.004        |
| 9      |                     | 44.0        | Crown                         | Broken Pipe          | 2      |              | 0.008      | 44             | 0     | 0.008        |
| 10     |                     | 51.0        | Crown                         | Broken Pipe          | 3      |              | 0.010      | 60             | 0     | 0.010        |
| 11     |                     | 58.0        | North                         | Wye Service / Sealed | 1      |              | 0.000      | 0              | 0     | 0.000        |
| 12     |                     | 66.0        | Crown                         | Crack-Radial         | 3      |              | 0.004      | 5              | 0     | 0.004        |
| 13     |                     | 72.0        | Crown                         | Broken Pipe          | 2      |              | 0.008      | 44             | 0     | 0.008        |
| 14     |                     | <b>88.0</b> | <b>North</b>                  | <b>Wye Service</b>   | 1      |              | 0.000      | 0              | 0     | 0.000        |
|        |                     |             | <b>Located under a garage</b> |                      |        |              |            |                |       |              |
| 15     |                     | 94.0        | Crown                         | Crack-Radial         | 3      |              | 0.004      | 5              | 0     | 0.004        |
| 16     |                     | 97.0        | Crown                         | Crack-Radial         | 3      |              | 0.004      | 5              | 0     | 0.004        |
| 17     |                     | 99.0        | Crown                         | Broken Pipe          | 3      |              | 0.010      | 60             | 0     | 0.010        |
| 18     |                     | 113.0       | North                         | Wye Service / Sealed | 1      |              | 0.000      | 0              | 0     | 0.000        |
| 19     |                     | 121.0       | Crown                         | Broken Pipe          | 4      |              | 0.030      | 78             | 0     | 0.030        |
| 20     |                     | 129.0       | Crown                         | Broken Pipe          | 3      |              | 0.010      | 60             | 0     | 0.010        |
| 21     |                     | 139.0       | North                         | Wye Service / Sealed | 1      |              | 0.000      | 0              | 0     | 0.000        |
| 22     |                     | 142.0       | DS Manhole 5346-143           |                      |        |              |            |                |       | 0.000        |