

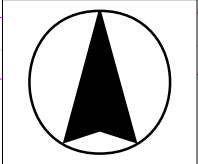
Install 269 lf of 8" Cured-in-Place Liner from MH 5545-424 to MH 5545-208

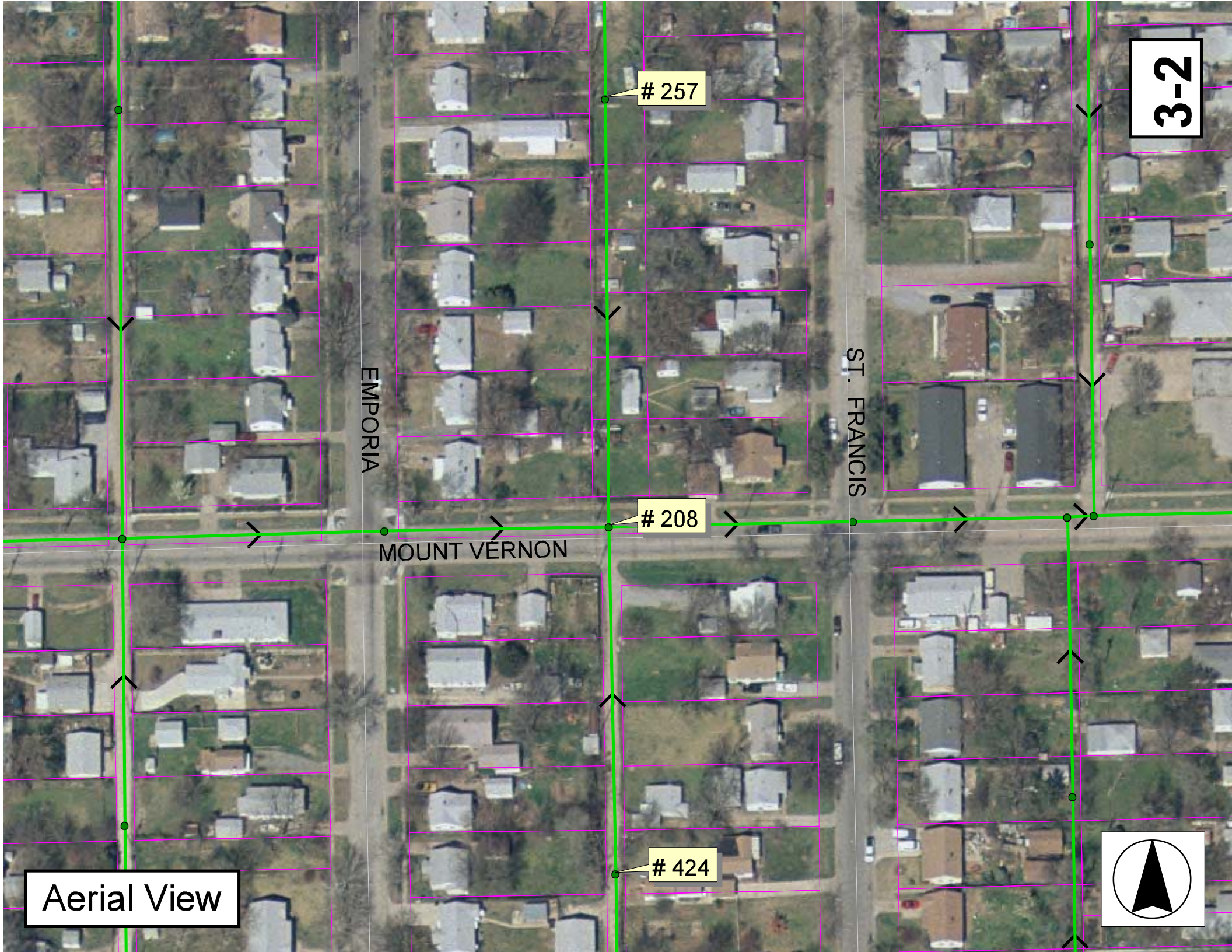
Install 334 lf of 8" Cured-in-Place Liner from MH 5545-257 to MH 5545-208

MH # 5545-257
Approx depth = 9.4 ft

MH # 5545-208
Approx depth = 8.8 ft

MH # 5545-424
Approx depth = 6.5





3-2

257

EMPORIA

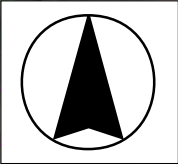
ST. FRANCIS

208

MOUNT VERNON

424

Aerial View



Television Inspection Master Report

11/24/2003
8:59:52AM
C05D

US Manhole: 5545-257
DS Manhole: 5545-208

1933 S ST FRANCIS ST
1958 S EMPORIA AVE

Date Insp: 4/24/2001
Dir Televised: Upstream To Downstream

Basin:

Pipe Information

Shape: Round Length Status:
Dia/Ht Width: 8 Material: VCP
Length: 334.2 Slope: 0.120

Project No.: B-101

Inspection Information

Crew: 694 Percent Full: 20 Tape ID: V-2786

Obs. #	VTR Counter	Dist	Location	Description	Rating	Obsrvd (gpm)	Est. (gpm)	Ratings		
								Struct	Clean	Remain (gpm)
1		0.0	US Manhole	5545-257.						
2		7.0	West	Wye Service	1		0.000	0	0	0.000
3		10.0	East	Wye Service	1		0.000	0	0	0.000
5		33.0	East	Wye Service	1		0.000	0	0	0.000
4		43.0	West	Wye Service	1		0.000	0	0	0.000
6		48.0	Invert	Sag / 20% FLOW						
7		53.0	Invert	Sag / OUT OF SAG						
8		56.0	West	Wye Service	1		0.000	0	0	0.000
9		56.0	Quad 3 / L-Lt	Crack-Radial	4		0.008	10	0	0.008
10		58.0	East	Wye Service	1		0.000	0	0	0.000
11		81.0	West	Wye Service	1		0.000	0	0	0.000
12		84.0	East	Wye Service	1		0.000	0	0	0.000
13		87.0	Invert	Sag / 25% FLOW						
14		106.0	West	Break-In Conn	1		0.001	0	0	0.001
15		109.0	East	Wye Service	1		0.000	0	0	0.000
16		109.0	Invert	Sag / OUT OF SAG						
17		132.0	West	Wye Service	1		0.000	0	0	0.000
18		134.0	Invert	Sag / 25% FLOW						
19		135.0	East	Wye Service	1		0.000	0	0	0.000
20		154.0	Quad 2 / L-Rt	Crack-Radial	1		0.001	1	0	0.001
21		158.0	West	Wye Service	1		0.000	0	0	0.000
22		160.0	East	Wye Service	1		0.000	0	0	0.000
23		168.0	Crown	Observation Hole						0.000
24		183.0	West	Wye Service	1		0.000	0	0	0.000
25		186.0	East	Wye Service	1		0.000	0	0	0.000
26		208.0	West	Wye Service	1		0.000	0	0	0.000
27		208.0	Invert	Sag / OUT OF SAG						
28		211.0	East	Wye Service	1		0.000	0	0	0.000
29		211.0	Wye Service	Roots	1		0.002	1	1	0.002
30		234.0	West	Break-In Conn	1		0.001	0	0	0.001
31		237.0	East	Wye Service	1		0.000	0	0	0.000
32		237.0	Wye Service	Roots	1		0.002	1	1	0.002
33		259.0	West	Wye Service	1		0.000	0	0	0.000
34		262.0	East	Wye Service	1		0.000	0	0	0.000
35		285.0	West	Wye Service	1		0.000	0	0	0.000
36		288.0	East	Wye Service	1		0.000	0	0	0.000
37		292.0	Quad 1 / U-Rt	Crack-Radial	1		0.001	1	0	0.001
38		308.0	Invert	Sag / 20% FLOW						
39		310.0	West	Break-In Conn	1		0.001	0	0	0.001
40		310.0	Crown	Crack-Radial	1		0.001	1	0	0.001
41		313.0	East	Wye Service	1		0.000	0	0	0.000
42		318.0	Crown	Crack-Radial	2		0.002	2	0	0.002
43		331.0	Invert	Sag / OUT OF SAG						
44		336.0	DS Manhole	5545-208						

3-3

Television Inspection Master Report

11/24/2003
8:59:52AM

US Manhole: 5545-424

DS Manhole: 5545-208

1958 S EMPORIA AVE

Date Insp:

Dir Televised:

Upstream To Downstream

Basin:

C05D

0 MH # 5545-424 to be constructed "by others"
5 West Wye
8 East Wye
30 West Wye
33 East Wye
44 Manhole to be removed "by others"
56 West Wye
59 East Wye
82 West Wye
85 East Wye
108 West Wye
110 East Wye
133 West Wye
136 East Wye
159 West Wye
162 East Wye
185 West Wye
188 East Wye
211 West Wye
213 East Wye
267 Downstream Manhole 5545-208

NOTE: This log was prepared prior to manholes being constructed and deleted "by others". This log does not reflect all the cracks in the pipe and the footage could be off due to field changes that are not yet recorded. Contractor should not rely on this log for reliable footages.

3-4