

9-1

Install 541 lf of 8" Cured-in-Place Liner
from MH 6046-239 to MH 6046-229

Install 528 lf of 8" Cured-in-Place Liner
from MH 6046-230 to MH 6046-020

MH # 6046-234
Approx depth = 12.7 ft

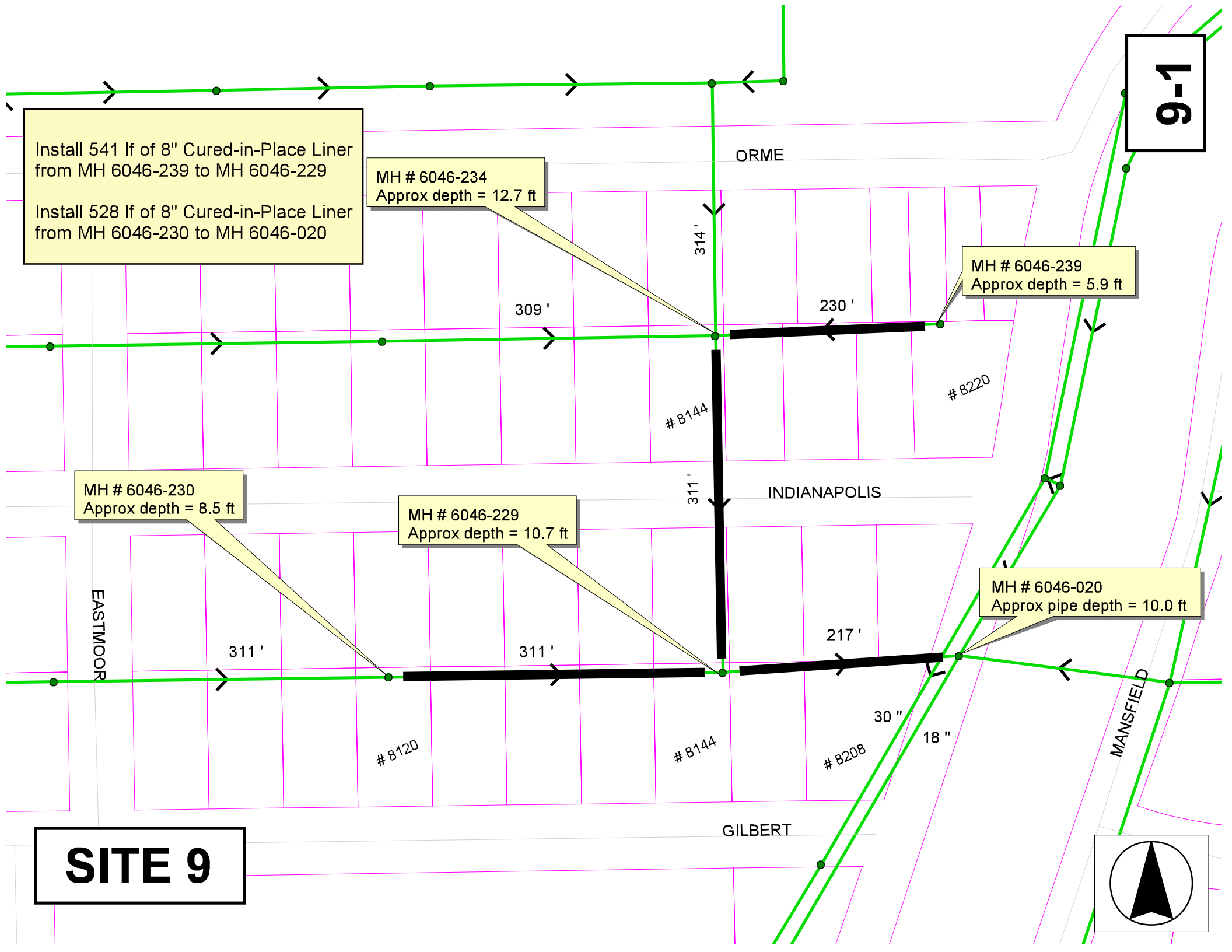
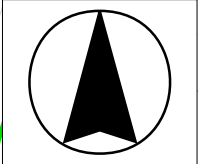
MH # 6046-239
Approx depth = 5.9 ft

MH # 6046-230
Approx depth = 8.5 ft

MH # 6046-229
Approx depth = 10.7 ft

MH # 6046-020
Approx pipe depth = 10.0 ft

SITE 9



9-2

ORME

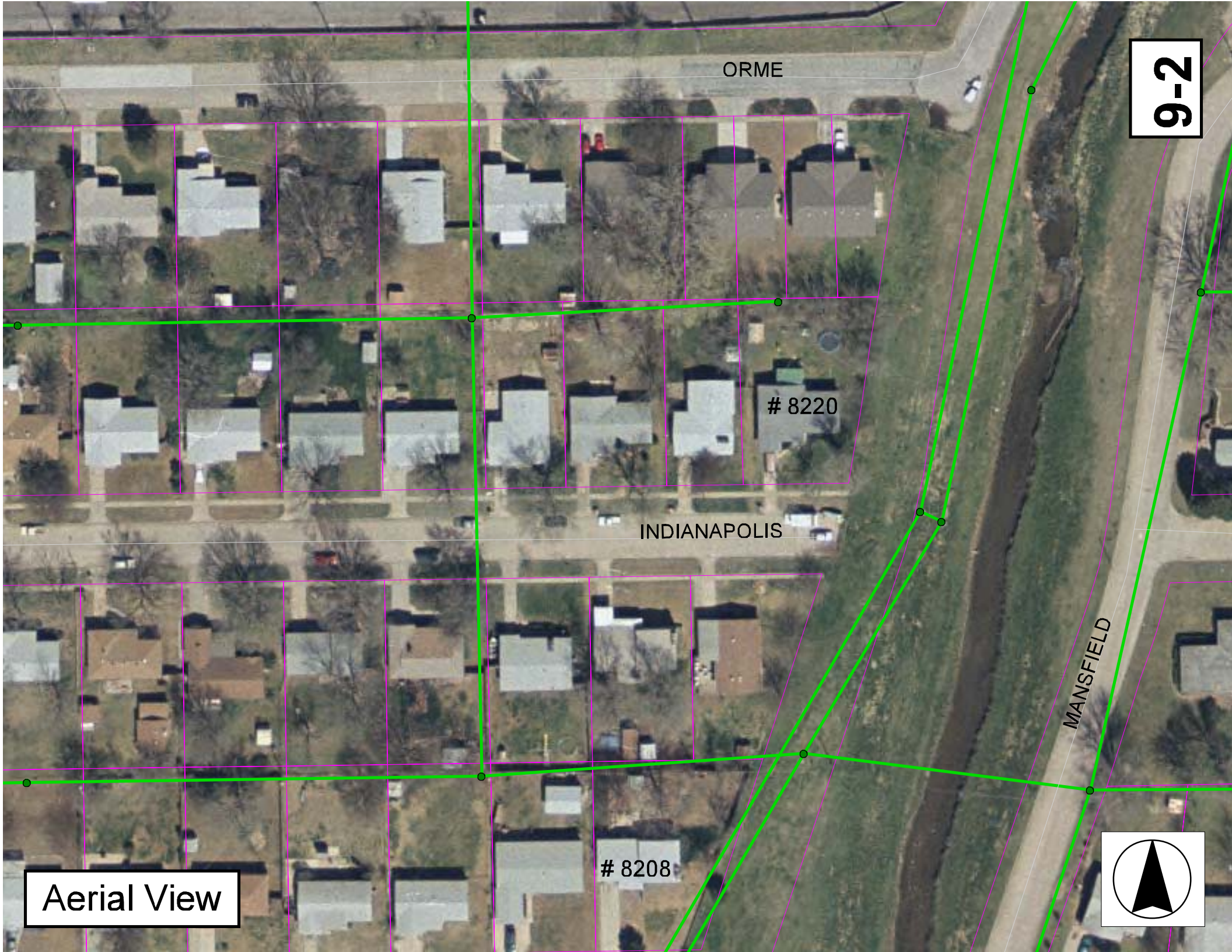
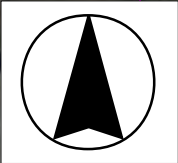
8220

INDIANAPOLIS

MANSFIELD

8208

Aerial View



Television Inspection Master Report

12/5/2003
11:21:51AM
E01G1

US Manhole: 6046-239
DS Manhole: 6046-234

8220 E INDIANAPOLIS ST
8144 E Indianapolis

Date Insp: 3/18/2003
Dir Televised: Upstream To Downstream
Basin:

Pipe Information

Shape: Round	Length Status:	Project No.: I-022
Dia/Ht Width: 8 0	Material: VCP	Index:
Length: 230.0	Slope: 0.391	Surface:
Pipe Sec Length:		
Crew: 692	Tape ID: 3858	

Obs. #	VTR Counter	Dist	Location	Description	Rating	Obsrvd (gpm)	Est. (gpm)	Ratings Struct	Clean	Remain (gpm)
1		0.0	US Manhole 6046-239							0.000
2		3.0	North	Break-In Conn	1		0.001	0	0	0.001
			LIVE CONNECTION---8225 E ORME							
3		5.0	North	Break-In Conn	1		0.001	0	0	0.001
			LIVE CONNECTION---8223 E ORME							
4		11.0	South	Wye Service	1		0.000	0	0	0.000
			LIVE CONNECTION---8220 E INDIANAPOLIS							
5		41.0	Joint	Roots	4		0.010	10	25	0.010
6		48.0	Joint	Roots	2		0.004	2	4	0.004
7		53.0	Invert	Crack-Radial	3		0.004	5	0	0.004
8		54.0	North	Break-In Conn	1		0.001	0	0	0.001
			LIVE CONNECTION---8217 E ORME							
9		65.0	Quad 1 / U-Rt	Crack-Radial	3		0.004	5	0	0.004
10		70.0	Joint	Roots	3		0.008	5	8	0.008
11		72.0	North	Break-In Conn	2		0.002	0	0	0.002
			LIVE CONNECTION---8215 E ORME							
12		73.0	Joint	Roots	2		0.004	2	4	0.004
13		76.0	Joint	Roots	3		0.008	5	8	0.008
14		77.0	North	Wye Service	2		0.000	0	0	0.000
			LIVE CONNECTION---8215 E ORME							
15		78.0	Joint	Roots	2		0.004	2	4	0.004
16		79.0	South	Break-In Conn	1		0.001	0	0	0.001
			LIVE CONNECTION---8214 E INDIANAPOLIS							
17		86.0	Joint	Roots	2		0.004	2	4	0.004
18		98.0	Joint	Roots	2		0.004	2	4	0.004
19		100.0	Joint	Roots	2		0.004	2	4	0.004
20		116.0	Crown	Broken Pipe	3		0.010	60	0	0.010
21		117.0	North	Wye Service	2		0.000	0	0	0.000
			LIVE CONNECTION---8209 E ORME							
22		125.0	Joint	Roots	2		0.004	2	4	0.004
23		128.0	Joint	Roots	2		0.004	2	4	0.004
24		137.0	South	Wye Service	2		0.000	0	0	0.000
			LIVE CONNECTION---8208 E INDIANAPOLIS							
25		145.0	Joint	Roots	3		0.008	5	8	0.008
26		150.0	Joint	Roots	2		0.004	2	4	0.004
27		156.0	North	Wye Service	1		0.000	0	0	0.000
			SO							
28		157.0	Joint	Roots	2		0.004	2	4	0.004
29		185.0	North	Wye Service	1		0.000	0	0	0.000
			LIVE CONNECTION---8203 E ORME							
30		209.0	South	Wye Service	1		0.000	0	0	0.000
			LIVE CONNECTION---8202 E INDIANAPOLIS / PACKED WITH ROOTS							
31		212.0	Joint	Roots	2		0.004	2	4	0.004
32		217.0	Joint	Roots	2		0.004	2	4	0.004
33		225.0	Joint	Roots	2		0.004	2	4	0.004
34		230.0	DS Manhole							

9-3

Television Inspection Master Report

12/5/2003
11:21:51AM
E01G1

US Manhole: 6046-234
DS Manhole: 6046-229

8144 E. Indianapolis
8144 E GILBERT ST ST

Date Insp: 3/17/2003

Basin:

Dir Televised: Upstream To Downstream

Pipe Information

Shape:	Round	Length Status:		Project No.:	H-100
Dia/Ht Width:	8 0	Material:	VCP	Index:	
Length:	311.1	Slope:	0.399	Surface:	
Pipe Sec Length:		Comment:			

Inspection Information

Crew:	692	Percent Full:	10	Tape ID:	3858
Weather:	Sunny	Purpose:	TV Existing Line	Counter Start:	4.50
Surface Cond:	Trees & Fences	Flow:	Normal Flow	Counter Stop:	
Dyed Test:	No				

Obs. #	VTR Counter Comment	Dist	Location	Description	Rating	Obsrvd (gpm)	Est. (gpm)	Ratings Struct	Clean	Remain (gpm)
1		0.0	US Manhole	6046-234						0.000
2		49.0	Quad 4 / U-Lt	Crack-Radial	3		0.004	5	0	0.004
3		59.0	West	Break-In Conn	1		0.001	0	0	0.001
LIVE CONNECTION---8144 E INDIANAPOLIS										
4		82.0	Joint	Roots	2		0.004	2	4	0.004
5		126.0	Joint	Roots	2		0.004	2	4	0.004
6		129.0	Joint	Roots	2		0.004	2	4	0.004
7		132.0	Joint	Roots	2		0.004	2	4	0.004
8		135.0	Joint	Roots	2		0.004	2	4	0.004
9		174.0	Invert	Broken Pipe	2		0.008	44	0	0.008
10		197.0	Crown	Crack-Radial	3		0.004	5	0	0.004
11		199.0	Invert	Broken Pipe	3		0.010	60	0	0.010
12		203.0	Crown	Broken Pipe	3		0.010	60	0	0.010
13		241.0	Quad 3 / L-Lt	Crack-Radial	3		0.004	5	0	0.004
14		303.0	Joint	Offset	3		0.010	20	0	0.010
(offset is against the flow, but not bad enough to do a point repair)										
15		309.0	DS Manhole							0.000

9-4

Television Inspection Master Report

12/5/2003
11:21:51AM

US Manhole: 6046-230
DS Manhole: 6046-229

8120 E GILBERT ST ST
8144 E GILBERT ST ST

Date Insp: 5/7/2002

Basin: E01G1

Dir Televised: Upstream To Downstream

Pipe Information

Shape:	Round	Length Status:	Project No.:	H-101
Dia/Ht Width:	8 0	Material:	VCP	Index:
Length:	310.6	Slope:	1.865	Surface:
Pipe Sec Length:	Comment:			

Inspection Information

Crew:	692	Percent Full:	10	Tape ID:	3360
Weather:	Sunny	Purpose:	TV Existing Line	Counter Start:	1.02.37
Surface Cond:	Trees & Fences	Flow:	Normal Flow	Counter Stop:	
Dyed Test:	No				

Obs. #	VTR Counter Comment	Dist	Location	Description	Rating	Obsrvd (gpm)	Est. (gpm)	Ratings Struct	Clean	Remain (gpm)
1		0.0	US Manhole 6046-230							0.000
2		1.0	Crown	Broken Pipe	2		0.008	44	0	0.008
3		13.0	South	Wye Service	1		0.000	0	0	0.000
4		16.0	North	Wye Service	2		0.000	0	0	0.000
	SEAL OFF									
5		20.0	Joint	Offset	3		0.010	20	0	0.010
6		22.0	South	Wye Service	1		0.000	0	0	0.000
7		24.0	Joint	Offset	3		0.010	20	0	0.010
8		79.0	South	Wye Service	2		0.000	0	0	0.000
	ROOTS									
9		82.0	North	Wye Service	1		0.000	0	0	0.000
10		92.0	Quad 4 / U-Lt	Crack-Horizontal	3		0.004	5	0	0.004
11		145.0	South	Wye Service	1		0.000	0	0	0.000
12		148.0	North	Break-In Conn	2		0.002	0	0	0.002
13		211.0	South	Wye Service	1		0.000	0	0	0.000
	SEAL OFF									
14		214.0	North	Wye Service	1		0.000	0	0	0.000
15		229.0	South	Wye Service	2		0.000	0	0	0.000
	ROOTS									
16		242.0	Joint	Roots	2		0.004	2	4	0.004
17		245.0	Joint	Roots	2		0.004	2	4	0.004
18		246.0	Crown	Broken Pipe	2		0.008	44	0	0.008
19		255.0	Quad 1 / U-Rt	Crack-Horizontal	3		0.004	5	0	0.004
20		280.0	South	Wye Service	1		0.000	0	0	0.000
21		283.0	North	Wye Service	1		0.000	0	0	0.000
22		301.0	Crown	Broken Pipe	3		0.010	60	0	0.010
23		303.0	DS Manhole							0.000

NOTE: A point repair was performed "by others" at approx. 22 ft. east of MH 6046-230. (since this televising was done) Pipe should be ok to line.

9-5

Television Inspection Master Report

12/5/2003
11:21:51AM

US Manhole: 6046-229 8144 E GILBERT ST ST **Date Insp:** 3/18/2003 **Basin:** E01G1
DS Manhole: 6046-020 8208 E GILBERT ST

Dir Televised: Upstream To Downstream

Pipe Information

Shape: Round Length Status: Project No.: H-100
Dia/Ht Width: 8 0 Material: VCP Index:
Length: 216.5 Slope: 0.653 Surface:
Pipe Sec Length: Comment:

Inspection Information

Crew: 692 Percent Full: 10 Tape ID: 3858
Weather: Sunny Purpose: TV Existing Line Counter Start: 13.30
Surface Cond: Trees & Fences Flow: Normal Flow Counter Stop:
Dyed Test: No

Obs. #	VTR Counter Comment	Dist	Location	Description	Rating	Obsrvd (gpm)	Est. (gpm)	Ratings Struct	Clean	Remain (gpm)
1		0.0	US Manhole 6046-229							0.000
2		60.0	South	Wye Service	1		0.000	0	0	0.000
3	LIVE CONNECTION--8202 E GILBERT	61.0	Crown	Broken Pipe	4		0.030	78	0	0.030
4		63.0	North	Wye Service	2		0.000	0	0	0.000
5	LIVE CONNECTION--8203 E INDIANAPOLIS / roots	87.0	Invert	Broken Pipe	3		0.010	60	0	0.010
6		129.0	North	Break-In Conn	1		0.001	0	0	0.001
7	LIVE CONNECTION--8209 E INDIANAPOLIS / roots around the outside of the tap	141.0	South	Wye Service	2		0.000	0	0	0.000
8	LIVE CONNECTION--8208 E GILBERT	152.0	Quad 3 / L-Lt	Crack-Radial	3		0.004	5	0	0.004
9		183.0	North	Wye Service	2		0.000	0	0	0.000
10	LIVE CONNECTION--8217 E INDIANAPOLIS	193.0	Sag begins							
		205.0	Camera Blocked	Offset	4		0.030	60	0	0.030

NOTE: The downstream 34 lf was replaced "by others". There were no additional taps within that area. Pipe should be ready for liner.