

**GENERAL NOTES:**

- Contractor will be required to provide notice to utility companies a minimum of twenty-four (24) hours prior to any excavation, as follows:  
 Kansas One-Call 687-2470  
 The Contractor must notify the following in case of an emergency:  
 Cox Communications 262-4270  
 Kansas Gas Service 1-888-482-1050  
 Kansas Energy 1-888-383-8650  
 Aerial Energy 1-800-303-0357  
 Southwestern Bell 268-2245  
 City of Wichita Water Dept. 268-4563  
 City of Wichita Sewer Maint. 268-4024  
 City of Wichita Storm Sewer Maint. 268-4090  
 City of Wichita Traffic Maint. 268-4034  
 Conoco Pipeline Co. 1-800-231-2551  
 Williams Pipeline Co. 529-6600  
 Phillips Pipeline Co. 1-800-766-8230
- Utility service lines, poles, valve boxes, meters, and etcetera are to be adjusted as necessary by others prior to construction unless the plans specifically call for their adjustment by the Contractor or unless the plans specifically identify a utility to be adjusted by its owner during construction. Existing utilities and their location, as shown on the plans, represent the best information obtainable for design. The Contractor will be required to work around existing utilities within the right-of-way which do not conflict with proposed construction.
- Rubble from the removal of miscellaneous structures and excess excavation which is to be wasted shall be disposed of on sites to be provided by the Contractor. These sites shall be approved by the Engineer as to suitability, appearance on site location. Locations, in the opinion of the Engineer, will leave an unsightly appearance will not be approved. All disposal sites must be approved by the Kansas Department of Health and Environment. Material either stockpiled or disposed of in a flood plain would require a Kansas State Board of Agriculture permit. Any material dumped in waters of the United States or wetlands is subject to U.S. Corps of Engineers permitting regulations. Any material buried or stockpiled beyond approved construction limits would require additional archaeological investigations unless buried in a previously approved borrow location.
- Trees and shrubs in public right-of-way which are in direct conflict with proposed new construction shall be removed by the Contractor with the Engineer's approval. Trees and shrubs which are not in direct conflict with proposed new construction shall be saved and protected from damage.
- The Contractor shall give all property owners and/or tenants of developed property adjoining the construction of this project a minimum of ten (10) days advance notice prior to start of construction.
- The Contractor shall be responsible for preserving property items. The Contractor will be required to re-establish any property items which are damaged or destroyed by his construction operations. Such items shall be re-established by a licensed land surveyor in accordance with state laws.
- All existing and proposed erosion control measures, including silt fencing, erosion control mat, straw boles, inlet barriers, and const. entrance shall be maintained throughout construction by the contractor and until project is accepted by the City of Wichita. The on-site engineer shall complete weekly reports on the status of erosion control measures. The contractor shall be required to comply with maintenance and/or replacement of erosion control measures as determined by the on-site engineer until project is accepted by City of Wichita. Maintenance and/or replacement of erosion control measures to be paid by L.S. bid item "Erosion Control BMP's."
- All areas disturbed during construction shall be seeded at 500 lbs./acre with Rye Grass immediately following construction in that area. Contractor shall prepare ground per City Specifications. Cost shall be paid by bid item "Project Seeding."

**STORM WATER DRAIN #2222**

to serve

**CITY OF WICHITA, KANSAS**

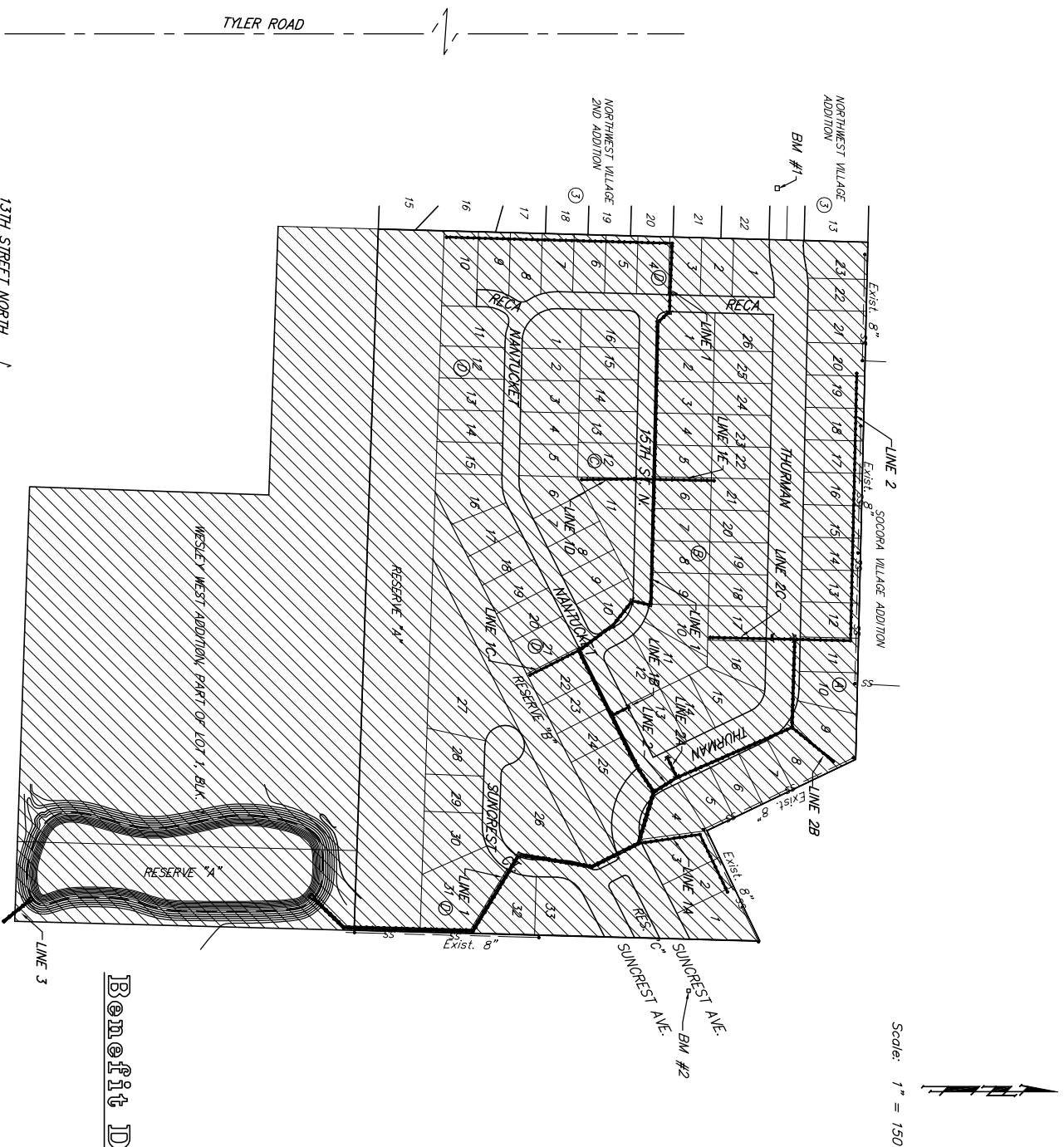
Jim Armour, P.E. Acting City Engineer

Project Number

**468-83756**

O.C.A. Number

**751361**



**Sheet Index**

Title Sheet	1
Line 1	2-3
Line 1 & 1B	4
Line 1	5-6
Line 1D	7
Line 1E	8
Line 1C	9
Line 1A	10
Line 2, 2A, & 2B	11
Line 2 & 2C	12
Line 2	13
Line 2	14
Line 3	15
Mass Grading Plan	16
Pond Plan	17
Pond Cross Sections	18-19
Erosion Control Plan	20-23
Soil Erosion BMP Details	24
Headwall Detail	25-26
Standard Manhole Detail	27
Manhole Frame & Cover Detail	28
Special Yard Inlet	29-30
Curb Inlet Details	31
Copy of Plat	31

**Benefit District**

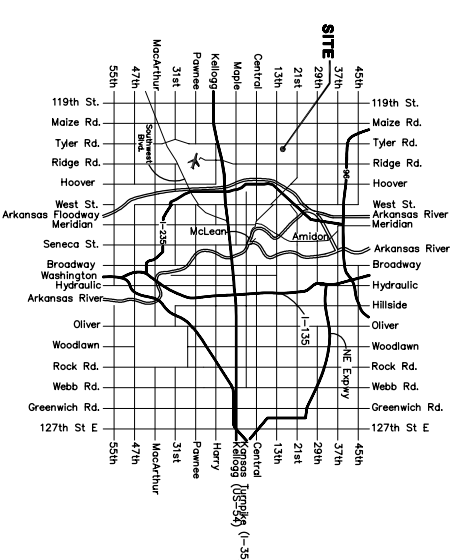


**Benchnmarks**

BM#1: □ Cut top of curb on the southeast top of curb return, 46.66' East and 19.46' South of the intersection of Thurman & Evergreen  
 Elev. = 166.10 (city datum)  
 1353.50 (NGVD)

BM#2: □ Cut top of curb on the south side curb line of the north Suncrest Ave. a distance of 97.86' East & 2.17' South of Lot 1, Blk. A, English Country Gardens Addition.  
 Elev. = 158.61 (city datum)  
 1346.01 (NGVD)

**Vicinity Map**



SW COR. SW 1/4, SEC. 9  
 TWP. 27-S, R-1-W