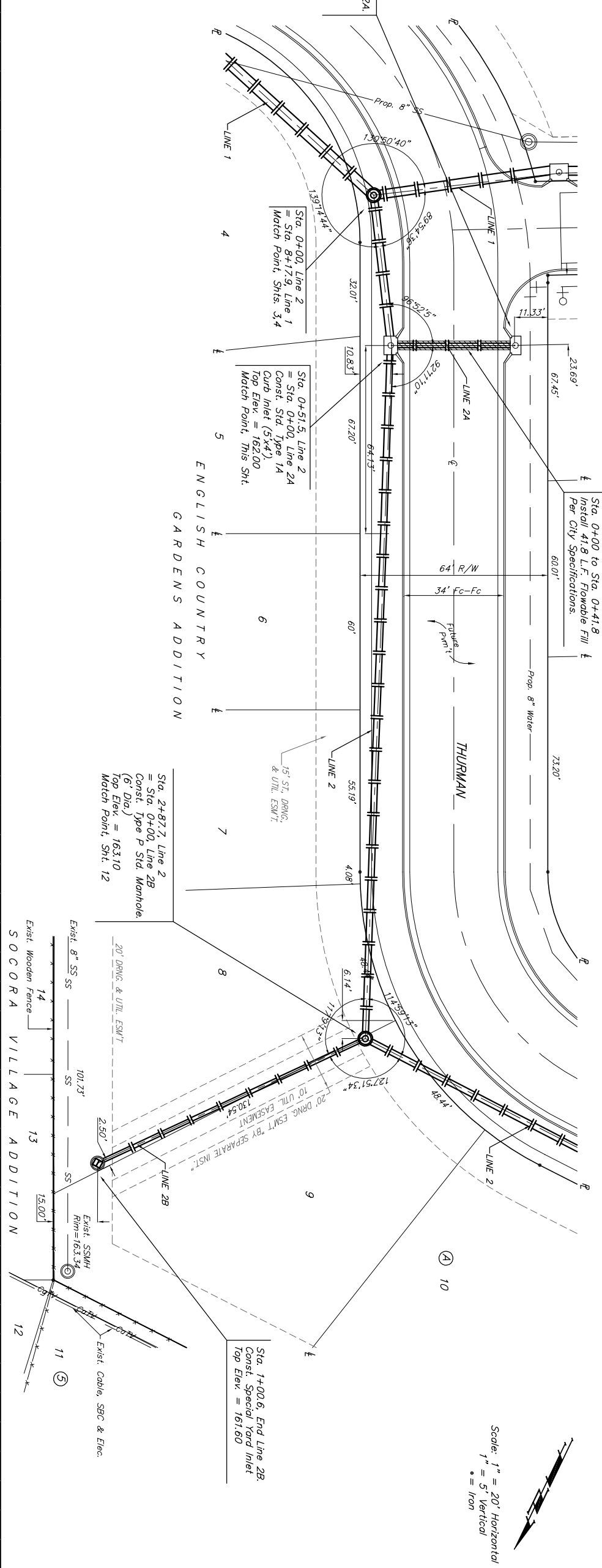


BM#1: "□" Out top of curb on the southeast top of curb return, 48.66' East and 19.46' South of the intersection of Thurman & Evergreen. Elev = 166.10 (city datum)

BM#2: "□" Out top of curb on the south side curb line of the north Suncrest Ave. a distance of 97.86' East & 2.17' South of Lot 1, Blk. A, English Country Gardens Addition. Elev = 158.61 (city datum)



Scale: 1" = 20' Horizontal
1" = 5' Vertical
* = Iron

150	153.50 = Flow Out 154.00 = Flow In (36", SW) 153.92 = Flow In (30", NW)	Sta. 0+00, Line 2 = Sta. 8+17.9, Line 1 Match Point, Shts. 3, 4	51.5 L.F. 30" SMS @ +0.155%
155	154.00 = Flow Out 154.50 = Flow In (24", NW) 155.50 = Flow In (18", SW)	Sta. 0+51.5, Line 2 = Sta. 0+00, Line 2A Const. Std. Type 1A Curb Inlet (5'x3') Top Elev. = 162.00 Match Point, This Sht.	
160	154.60 = Flow		
165	154.70 = Flow		236.2 L.F. 24" SMS @ +0.203%
150	154.80 = Flow		
155	154.90 = Flow		
160	154.98 = Flow Out 155.08 = Flow In (24", W) 155.73 = Flow In (15", NE)	Sta. 2+87.7, Line 2 = Sta. 0+00, Line 2B Const. Type P Std. Manhole. (6' Dia.) Top Elev. = 163.10 Match Point, Sht. 12	
150	154.00 = Flow Out 154.50 = Flow In (24", NW) 155.50 = Flow In (18", SW)	Sta. 0+00, Line 2A = Sta. 0+51.5, Line 2 Match Point, This Sht.	41.8 L.F. 18" RCP @ +1.196%
155	156.00 = Flow Out	Sta. 0+41.8, End Line 2A. Const. Std. Type 1A Curb Inlet (5'x3') Top Elev. = 162.00	Install 41.8 L.F. Flowable Fill to Elev. = 159.50
160	154.98 = Flow Out 155.08 = Flow In (24", W) 155.73 = Flow In (15", NE)	Sta. 0+00, Line 2B = Sta. 2+87.7, Line 2 Match Point, This Sht.	
165	156.16 = Flow		100.6 L.F. 15" SMS @ +0.865%
150	156.60 = Flow Out	Sta. 1+00.6, End Line 2B. Const. Special Yard Inlet Top Elev. = 161.60	

**ENGLISH COUNTRY GARDENS ADDITION
LINE 2, 2A & 2B
STORM WATER DRAIN IMPROVEMENTS**

BAUGHMAN COMPANY P.A.
ENGINEERING, SURVEYING, & PLANNING
316-262-7271 • 319 ELLIS • WICHITA, KANSAS 67211

DESIGN	SC1	DRAWN	SC1	APPROVED	SC1	DATE	02/04/04	SCALE	NOTED
SHEET	11		OF		31				