

**BENCHMARKS:**  
 City of Wichita Disc at Southwest  
 Corner of 135th St. W. & 13th St. N  
 30.00'± S. of  $\odot$   
 35.00'± W. of  $\odot$   
 Elev. = 1355.65 NGVD29

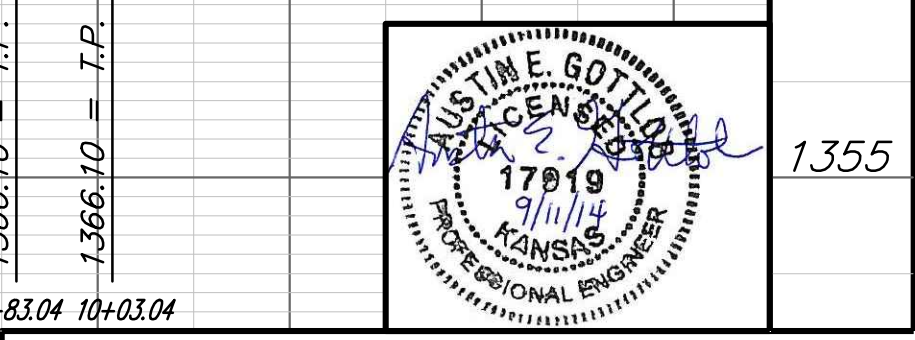
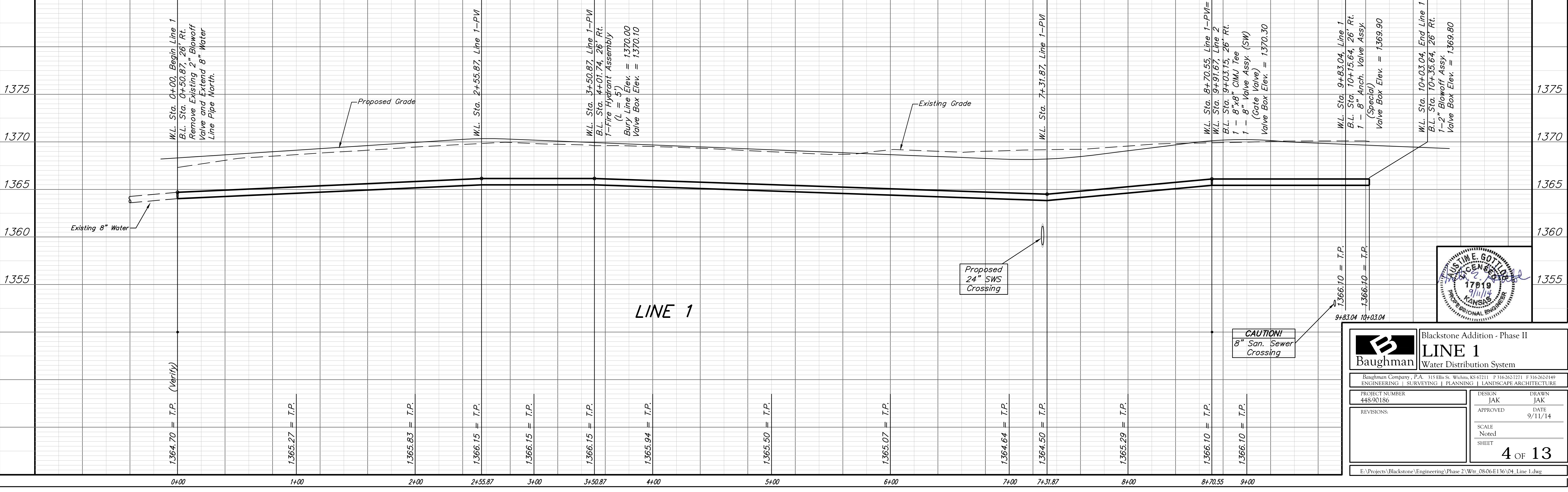
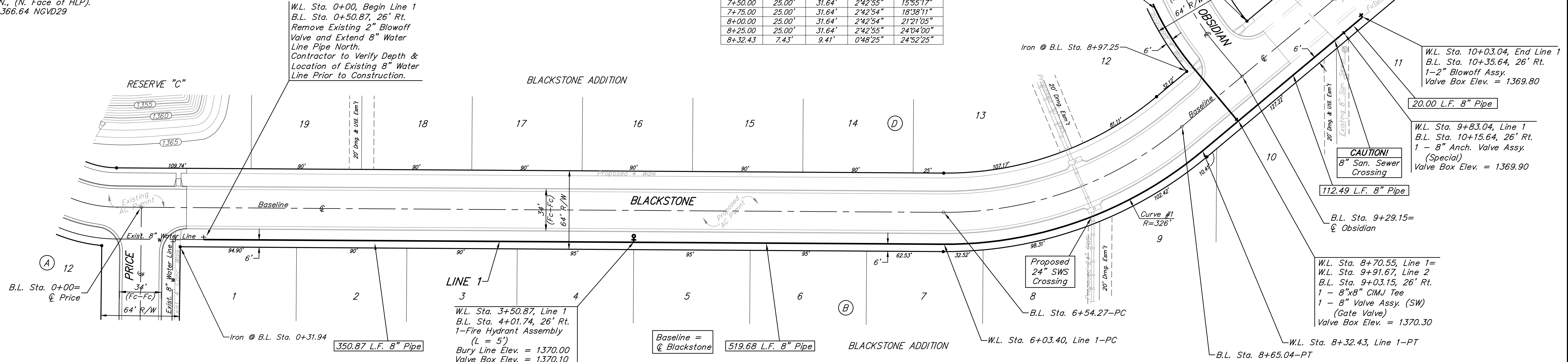
Small Railroad Spike in 2nd HLP W.  
 of 135th St. W. on South Side of  
 13th St. N., (N. Face of HLP).  
 Elev. = 1359.50 NGVD29

Small Railroad Spike in 4th HLP W.  
 of 135th St. W. on South Side of  
 13th St. N., (N. Face of HLP).  
 Elev. = 1366.64 NGVD29

Curve #1  
 Curve Data Based on Centerline of Pipe  
 Rad. = 326' Delta = 49°44'49" Tangent = 151.14'  
 Arc = 229.03' L.C. = 274.24' Def./Ft. = 6.51621 Min.

Station	Arc	Chord	Defl.	Total Defl.
6+03.40	-	-	0'00"00"	0'00"00"
6+25.00	21.60'	27.34'	2'20"45"	2'20"45"
6+50.00	25.00'	31.64'	2'42"54"	5'03'39"
6+75.00	25.00'	31.64'	2'42"55"	7'46'34"
7+00.00	25.00'	31.64'	2'42"54"	10'29'28"
7+25.00	25.00'	31.64'	2'42"54"	13'12'22"
7+50.00	25.00'	31.64'	2'42"55"	15'55'17"
7+75.00	25.00'	31.64'	2'42"54"	18'38'11"
8+00.00	25.00'	31.64'	2'42"54"	21'21'05"
8+25.00	25.00'	31.64'	2'42"55"	24'04'00"
8+32.43	7.43'	9.41'	0'48"25"	24'52'25"

Scale: 1" = 40' Horizontal  
 1" = 5' Vertical  
 • = Iron



**Baughman** Blackstone Addition - Phase II  
**LINE 1**  
 Water Distribution System

Baughman Company, P.A. 315 Ellis St. Wichita, KS 67211 P 316-263-7271 F 316-263-2149  
 ENGINEERING | SURVEYING | PLANNING | LANDSCAPE ARCHITECTURE

PROJECT NUMBER: 448-90186 DESIGN: JAK DRAWN: JAK  
 APPROVED: DATE: 9/11/14  
 REVISIONS: SCALE: Noted SHEET: 4 OF 13

E:\Projects\Blackstone\Engineering\Phase 2\Wtr\_0806E136\04\_Line 1.dwg