
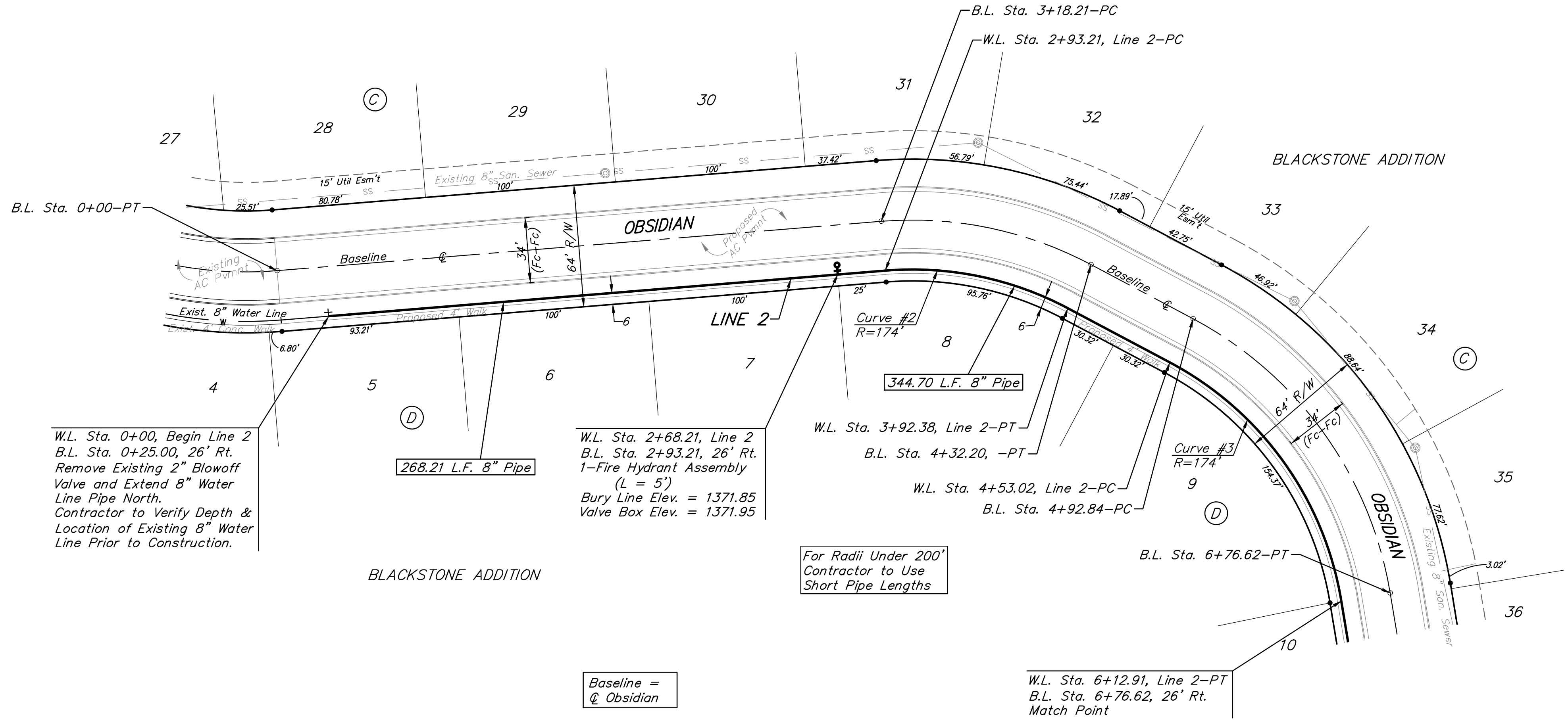


BENCHMARKS:
 City of Wichita Disc at Southwest
 Corner of 135th St. W. & 13th St. N
 30.00'± S. of \odot
 35.00'± W. of \odot
 Elev. = 1355.65 NGVD29

Small Railroad Spike in 2nd HLP W.
 of 135th St. W. on South Side of
 13th St. N., (N. Face of HLP).
 Elev. = 1359.50 NGVD29

Small Railroad Spike in 4th HLP W.
 of 135th St. W. on South Side of
 13th St. N., (N. Face of HLP).
 Elev. = 1366.64 NGVD29


 Scale: 1" = 40' Horizontal
 1" = 5' Vertical
 • = Iron



Curve #2
 Curve Data Based on Centerline of Pipe
 Rad. = 174' Delta = 87°20'59" Tangent = 166.13'
 Arc = 189.05' L.C. = 240.32' Def./Ft. = 13.86137 Min.

Station	Arc	Chord 8' Right	Defl.	Total Defl.
3+48.39	-	-	0'00"00"	0'00"00"
3+50.00	1.61'	2.16'	0'22"19"	0'22"19"
3+75.00	25.00'	33.41'	5'46"32"	6'08"51"
4+00.00	25.00'	33.41'	5'46"32"	11'55"23"
4+25.00	25.00'	33.41'	5'46"32"	17'41"55"
4+50.00	25.00'	33.41'	5'46"32"	23'28'27"
4+75.00	25.00'	33.41'	5'46"32"	29'14'59"
5+00.00	25.00'	33.41'	5'46"32"	35'01'31"
5+25.00	25.00'	33.41'	5'46"32"	40'48'03"
5+37.44	12.44'	16.65'	2'52"27"	43'40'30"

Curve #3
 Curve Data Based on Centerline of Pipe
 Rad. = 174' Delta = 86°24'55" Tangent = 163.44'
 Arc = 190.03' L.C. = 238.26' Def./Ft. = 13.64236 Min.

Station	Arc	Chord 8' Right	Defl.	Total Defl.
5+37.44	-	-	0'00"00"	0'00"00"
5+50.00	12.56'	16.54'	2'51"21"	2'51"21"
5+75.00	25.00'	32.88'	5'41"03"	8'32"24"
6+00.00	25.00'	32.88'	5'41"04"	14'13'28"
6+25.00	25.00'	32.88'	5'41"04"	19'54'32"
6+50.00	25.00'	32.88'	5'41"03"	25'35'35"
6+75.00	25.00'	32.88'	5'41"04"	31'16'39"
7+00.00	25.00'	32.88'	5'41"03"	36'57'42"
7+25.00	25.00'	32.88'	5'41"04"	42'38'46"
7+27.47	2.47'	3.25'	0'33"41"	43'12'27"

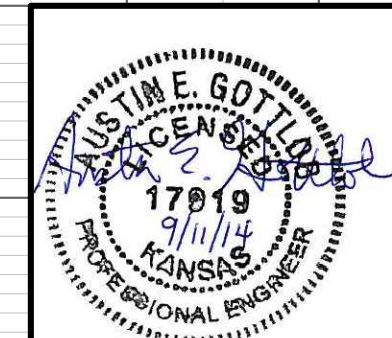
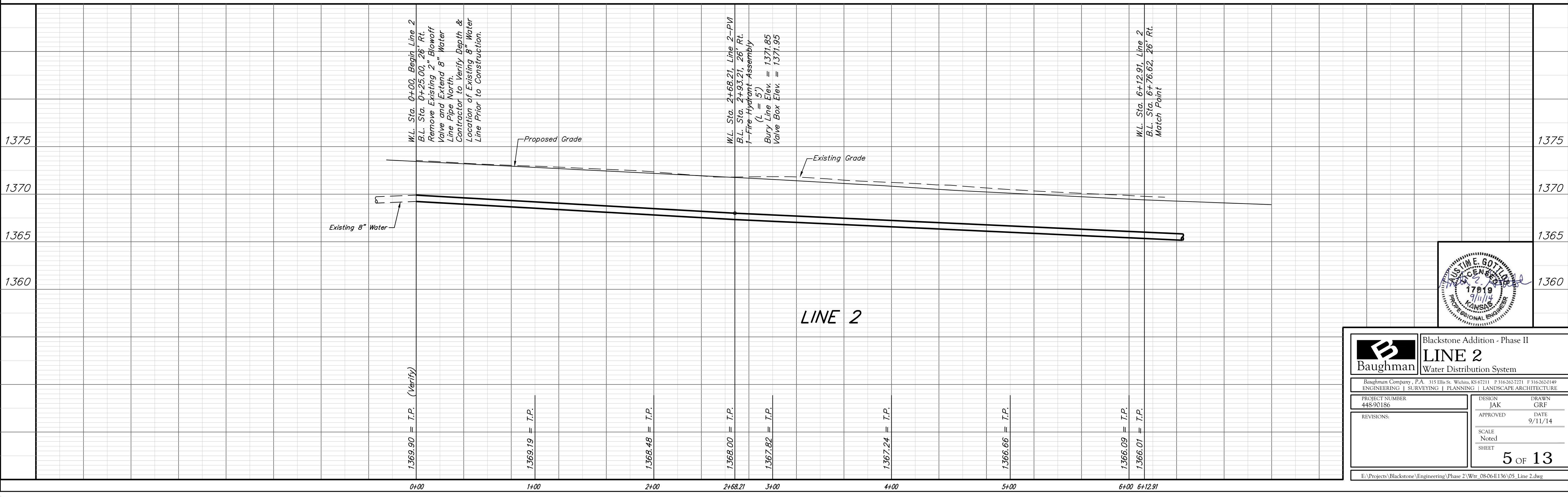
W.L. Sta. 0+00, Begin Line 2
 B.L. Sta. 0+25.00, 26' Rt.
 Remove Existing 2" Blowoff
 Valve and Extend 8" Water
 Line Pipe North.
 Contractor to Verify Depth &
 Location of Existing 8" Water
 Line Prior to Construction.

W.L. Sta. 2+68.21, Line 2
 B.L. Sta. 2+93.21, 26' Rt.
 1-Fire Hydrant Assembly
 (L = 5')
 Bury Line Elev. = 1371.85
 Valve Box Elev. = 1371.95

For Radii Under 200'
 Contractor to Use
 Short Pipe Lengths

W.L. Sta. 6+12.91, Line 2-PT
 B.L. Sta. 6+76.62, 26' Rt.
 Match Point

Baseline =
 \odot Obsidian



Baughman Blackstone Addition - Phase II
LINE 2
 Water Distribution System

Richman Company, P.A. 115 Ellis St. Wichita, KS 67211 F 316-262-7271 F 316-262-0149
 ENGINEERING | SURVEYING | PLANNING | LANDSCAPE ARCHITECTURE

PROJECT NUMBER 448-90186	DESIGN JAK	DRAWN GRF
REVISIONS:	APPROVED	DATE 9/11/14
SCALE Noted		SHEET 5 OF 13

E:\Projects\Blackstone\Engineering\Phase 2\Wtr_0806E136\05_Line 2.dwg