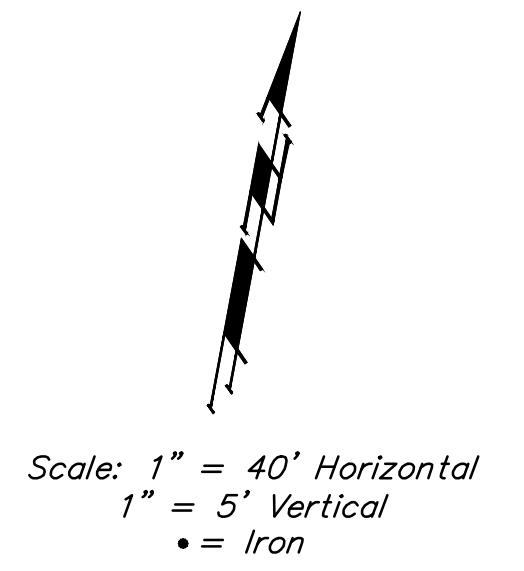
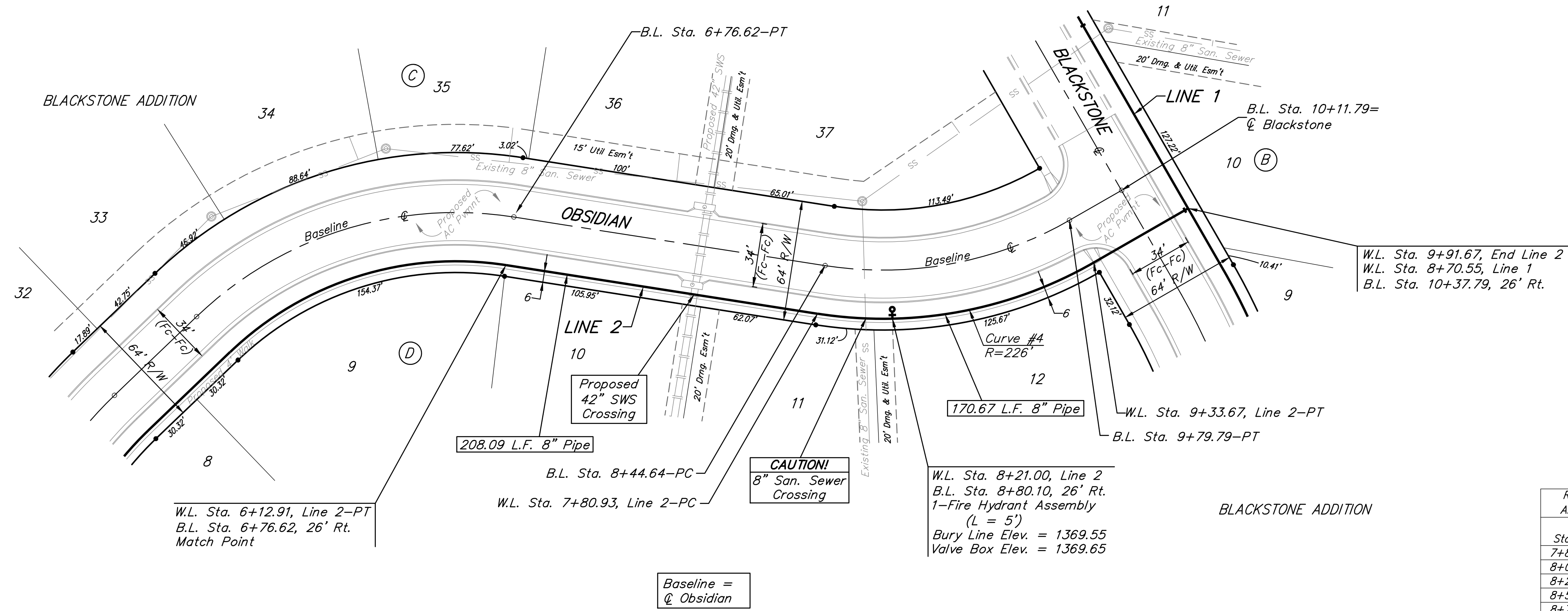


BENCHMARKS:
 City of Wichita Disc at Southwest
 Corner of 135th St. W. & 13th St. N
 30.00'± S. of C
 35.00'± W. of C
 Elev. = 1355.65 NGVD29

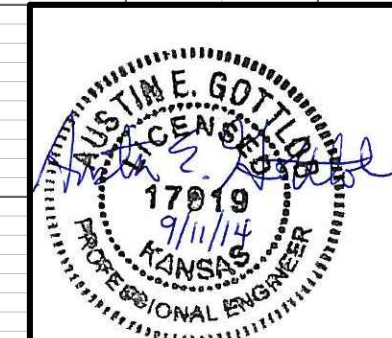
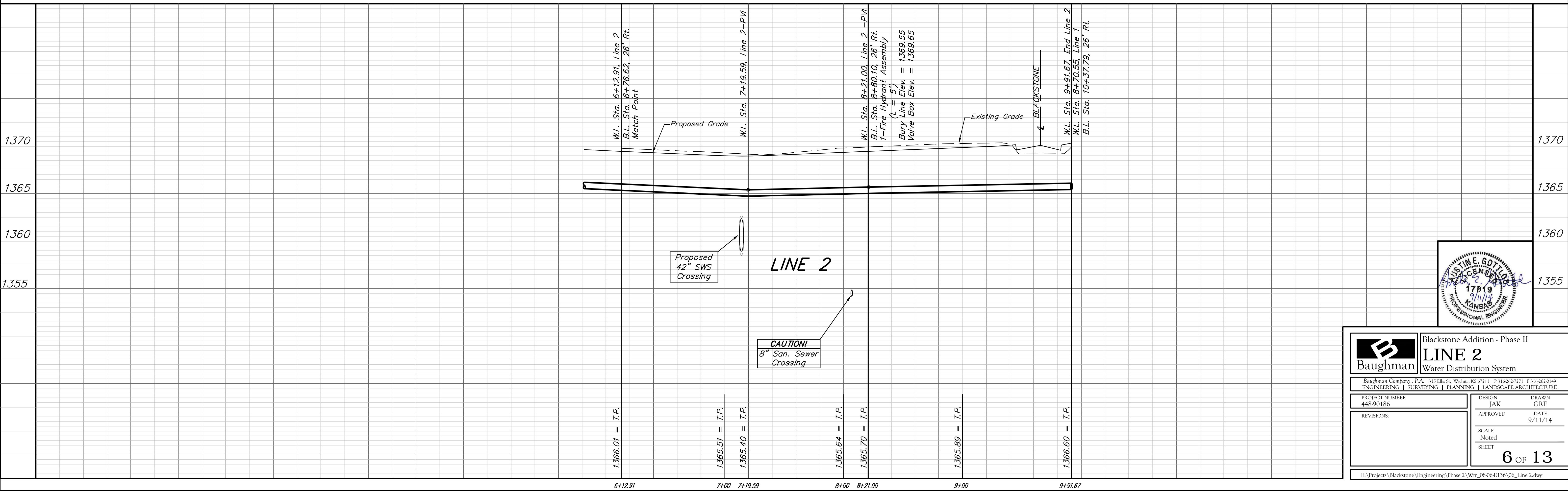
Small Railroad Spike in 2nd HLP W.
 of 135th St. W. on South Side of
 13th St. N., (N. Face of HLP).
 Elev. = 1359.50 NGVD29

Small Railroad Spike in 4th HLP W.
 of 135th St. W. on South Side of
 13th St. N., (N. Face of HLP).
 Elev. = 1366.64 NGVD29



Curve #4
 Curve Data Based on Centerline of Pipe
 Rad. = 152.74' Delta = 38°46'12" Tangent = 53.74'
 Arc = 152.74' L.C. = 101.39' Def./Ft. = 7.61490 Min.

Station	Arc	Chord 8' Right	Defl.	Total Defl.
7+80.93	-	-	0'00"00"	0'00"00"
8+00.00	19.07'	13.58'	2'25"13"	2'25"13"
8+25.00	25.00'	17.79'	3'10"22"	5'35"35"
8+50.00	25.00'	17.79'	3'10"23"	8'45"58"
8+75.00	25.00'	17.79'	3'10"22"	11'56"20"
9+00.00	25.00'	17.79'	3'10"22"	15'06"42"
9+25.00	25.00'	17.79'	3'10"23"	18'17"05"
9+33.67	8.67'	6.17'	1'06"01"	19'23"06"



Baughman Blackstone Addition - Phase II
LINE 2
 Water Distribution System

Baughman Company, P.A. 315 Ellis St. Wichita, KS 67211 P 316-262-7271 F 316-262-0149
 ENGINEERING | SURVEYING | PLANNING | LANDSCAPE ARCHITECTURE

PROJECT NUMBER 448-90186	DESIGN JAK	DRAWN GRF
REVISIONS:	APPROVED	DATE 9/11/14
	SCALE Noted	SHEET 6 OF 13

E:\Projects\Blackstone\Engineering\Phase 2\Wtr_0806E136\06_Line 2.dwg