

GENERAL NOTES

- UNLESS SHOWN OR STATED OTHERWISE ON THESE DRAWINGS, MATERIALS AND CONSTRUCTION SHALL BE IN ACCORDANCE WITH CITY OF WICHITA STANDARD SPECIFICATIONS AND SPECIAL PROVISIONS.
- CONTRACTOR WILL BE REQUIRED TO PROVIDE A MINIMUM ADVANCE NOTICE OF SEVENTY-TWO (72) HOURS TO UTILITY COMPANIES PRIOR TO STARTING ANY EXCAVATION AS FOLLOWS:

KANSAS ONE-CALL 1-800-344-7233
or 687-2470 (LOCAL WICHITA)
- EXISTING UTILITIES AND THEIR LOCATIONS, AS SHOWN ON THE PLANS REPRESENT THE BEST INFORMATION OBTAINABLE FOR DESIGN. LOCATION INFORMATION HAS BEEN OBTAINED FROM THE VARIOUS UTILITY COMPANIES AND IS EITHER FROM COMPANY RECORD DRAWINGS OR COMPANY PROVIDED FIELD LOCATIONS. THE PLAN LOCATIONS SHOWN ARE NOT GUARANTEED. ADDITIONAL EXISTING UTILITIES MAY ALSO BE ENCOUNTERED.
- RUBBLE AND DEBRIS FROM THE REMOVAL OF MISCELLANEOUS STRUCTURES AND EXCESS EXCAVATION WHICH IS TO BE WASTED SHALL BE DISPOSED OF ON SITES TO BE PROVIDED BY THE CONTRACTOR. THESE SITES SHALL BE APPROVED BY THE ENGINEER AS TO SUITABILITY, APPEARANCE AND SITE LOCATION. LOCATIONS THAT, IN THE OPINION OF THE ENGINEER, WILL LEAVE AN UNSIGHTLY APPEARANCE WILL NOT BE APPROVED. ALL DISPOSAL SITES MUST BE APPROVED BY THE KANSAS DEPARTMENT OF HEALTH AND ENVIRONMENT. MATERIAL EITHER STOCKPILED OR DISPOSED OF IN A FLOOD PLAIN WOULD REQUIRE A KANSAS STATE BOARD OF AGRICULTURE PERMIT. ANY MATERIAL DUMPED IN WATERS OF THE UNITED STATES OR WETLANDS IS SUBJECT TO U.S. CORPS OF ENGINEERS PERMITTING REGULATIONS. ANY MATERIAL BURIED OR STOCKPILED BEYOND APPROVED CONSTRUCTION LIMITS WOULD REQUIRE ADDITIONAL ARCHAEOLOGICAL INVESTIGATIONS UNLESS BURIED IN A PREVIOUSLY APPROVED BORROW LOCATION.
- COST OF EXCAVATION, HAULING, AND DUMPING OF EXCESS EXCAVATION SHALL BE SUBSIDIARY TO THE PROJECT.
- ALL DISTURBED AREAS TO BE SEEDED WITH RYE GRASS AT A RATE OF 200 LBS. PER ACRE WITHIN 10 DAYS OF CONSTRUCTION. CONTRACTOR TO PREPARE GROUND PER CITY SPECIFICATIONS. COST IS SUBSIDIARY TO SITE PREPARATION AND RESTORATION.
- ALL STRUCTURES ARE CONSIDERED TO BE CONFINED SPACE FOR WORKING CONDITIONS.
- CONTRACTOR SHALL USE CAUTION DURING WORK IN & AROUND HEADWORKS BUILDING AND STRUCTURES INCLUDED IN PROJECT SCOPE DUE TO POTENTIAL FOR PRESENCE AND ACCUMULATION OF HARMFUL OR EXPLOSIVE GASES.

LEGEND

	EPOXY COATING SYSTEM
	SECTION CUT
	EACH WAY, EACH FACE
	CONCRETE FILL
	PORTLAND CEMENT GROUT
	REINFORCING
	REMOVAL LIMITS
	NOTE

NEW CONSTRUCTION NOTE : ALL ACTION NOTES FOR THIS PLAN SET ARE SHOWN WITH THE TWO LINE BOX. OTHER CONSTRUCTION NOTES ON THESE PLANS ARE FROM PREVIOUS PROJECTS. THIS METHOD OF PRESENTATION HAS BEEN USED TO ENSURE THE MOST ACCURATE AS-BUILT INFORMATION IS PROVIDED.

TREATMENT PLANT #2 HEADWORKS IMPROVEMENTS

TO SERVE

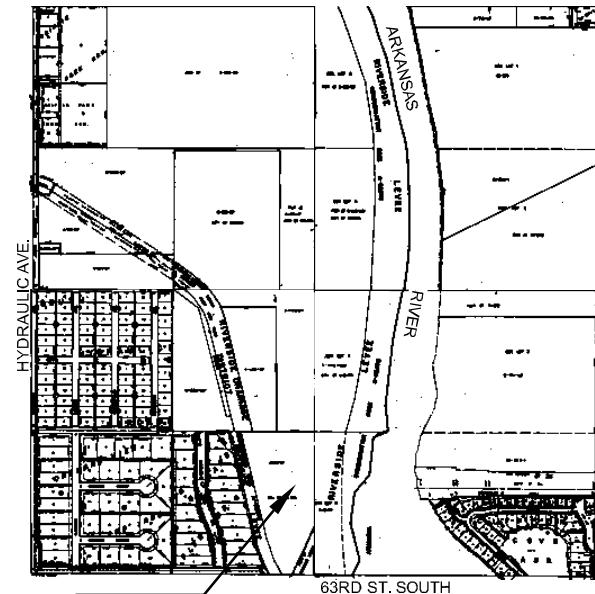
CITY OF WICHITA WASTEWATER SYSTEM

PROJECT NO. 468-84958

THE CITY OF WICHITA, KANSAS
GARY JANZEN, P.E. - CITY ENGINEER

OCA NO. 624116
CAPITAL IMPROVEMENT PROJECT
S-36

SEC. 27, T28S, R1E

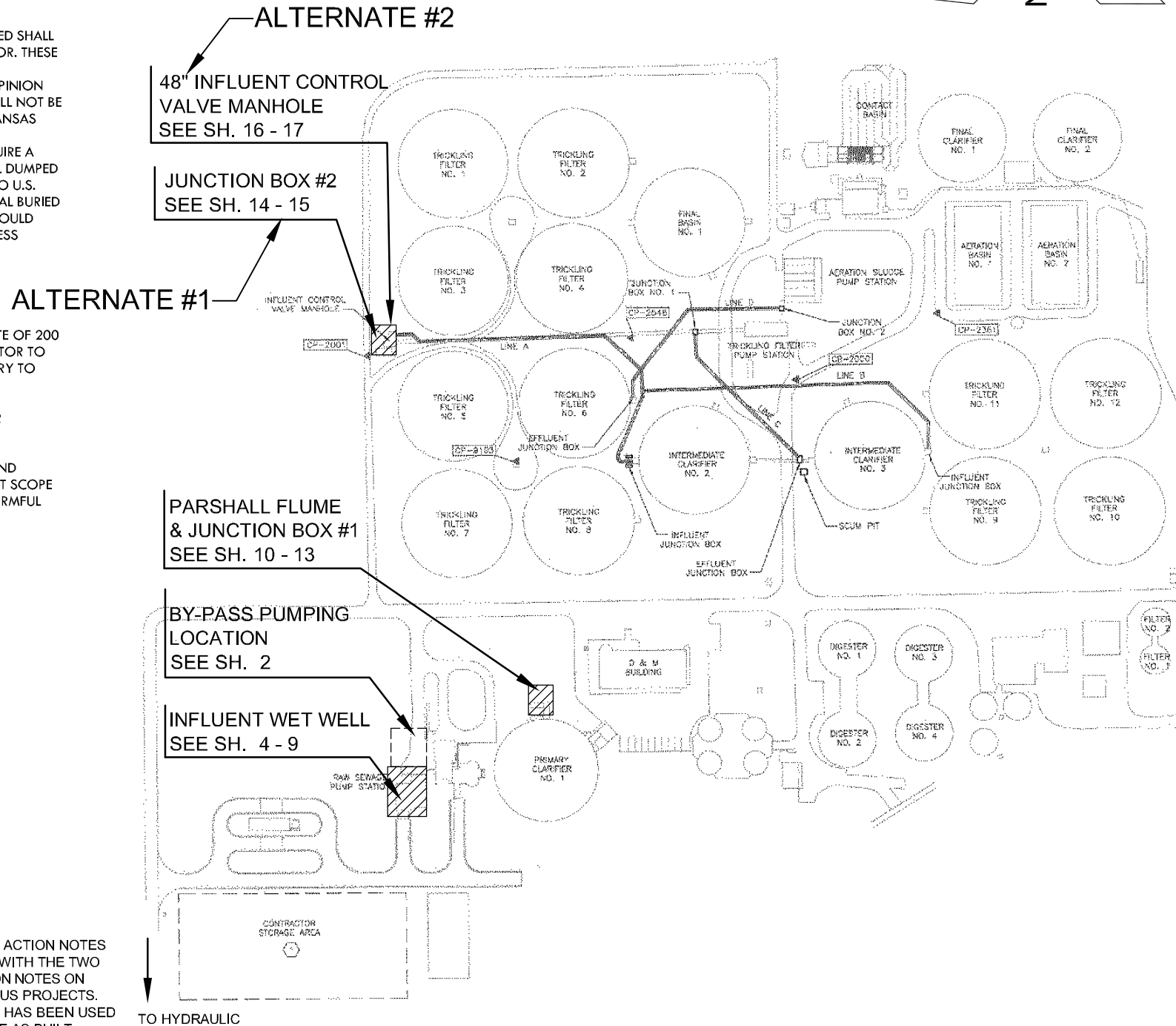


PROJECT LOCATION

VICINITY MAP
No Scale

INDEX OF SHEETS

SHEET NO.	DESCRIPTION
1	TITLE SHEET
2	BY-PASS PIPING LAYOUT
3	GENERAL NOTES & LEGEND
4-9	RAW WATER PUMP STATION
10-13	PARSHALL FLUME & JUNCTION BOX #1
14-15	JUNCTION BOX #2
16-17	CONTROL VALVE MANHOLE
18	CV-22111 CONTROL VALVE ELECTRICAL PLANS
19	CV-22111 WIRING DIAGRAMS



TO HYDRAULIC



**CITY OF WICHITA, KANSAS
WASTEWATER TREATMENT PLANT #2
HEADWORKS IMPROVEMENTS**

©2014 MKEC Engineering
All Rights Reserved
www.mkec.com
These drawings and their contents, including, but not limited to, all concepts, designs, & ideas are the exclusive property of MKEC Engineering (MKEC), and may not be used or reproduced in any way without the express consent of MKEC.

TITLE SHEET

PROJECT NO.	1401010275	
DATE	07/31/14	
SCALE	N.T.S.	
DESIGNED	DRAWN	CHECKED
KJS	DPG	KJS
ISSUED FOR CONSTRUCTION	09/18/14	
NO.	REVISION	DATE
SHEET NO.		

