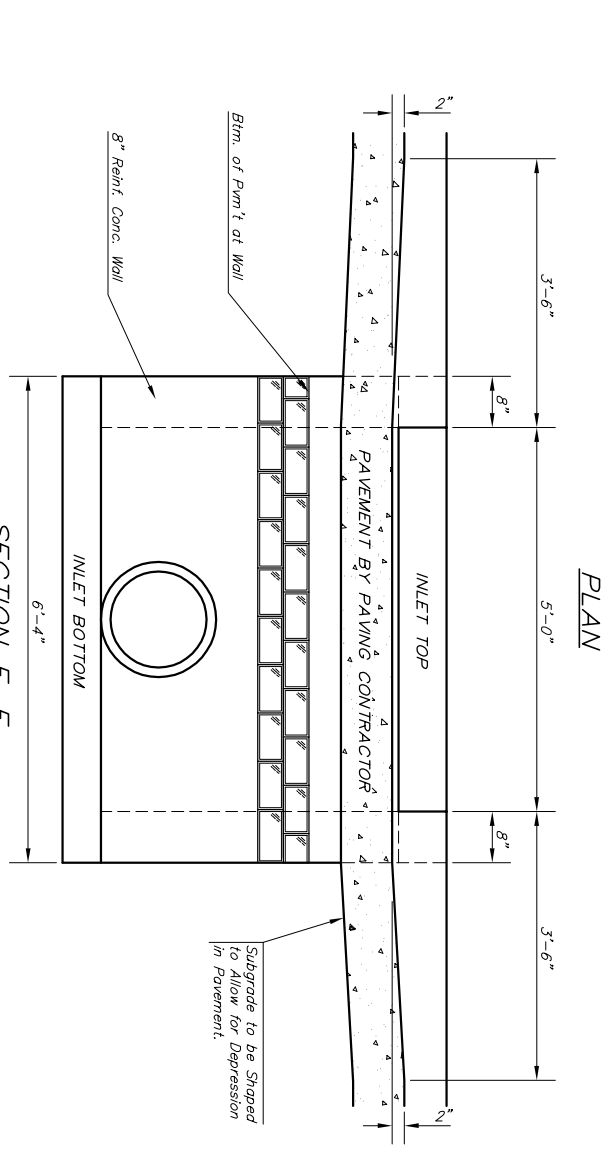


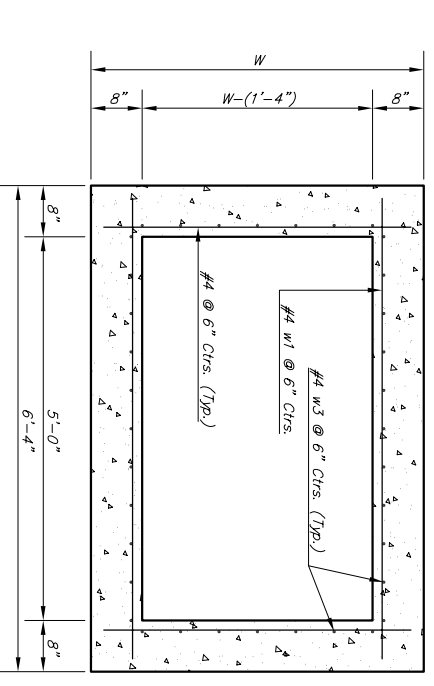
NOTE:
Inlet Top Reinforcing shall be Spaced on 6" Max. Centers. Inlet Lids Shall be Notched Out as Indicated to Facilitate Construction of Curb.

NOTE:
Concrete Tops to be installed on thin mortar cushion to insure full support along brick walls. Concrete tops may be cast in place or precast. Concrete used for inlet construction shall be concrete pavement mix with air entrainment.

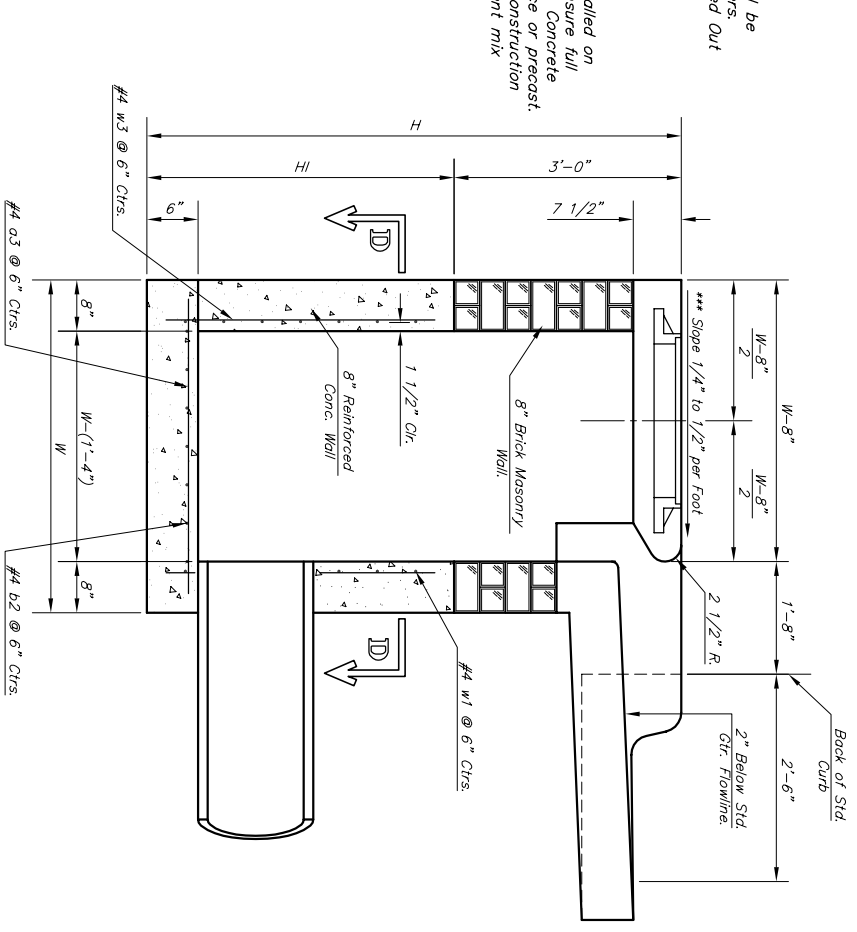
NOTE:
Expansion Joint Only in Curb Area With Concrete Pavement.



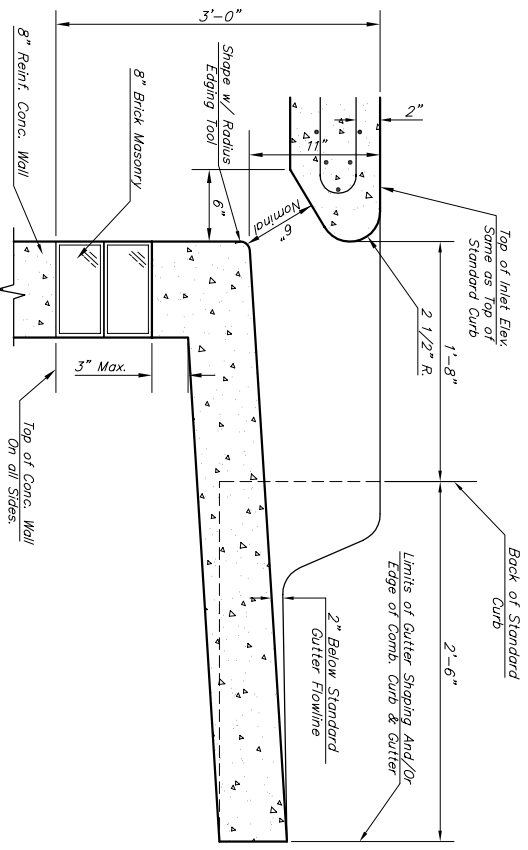
SECTION E-E



SECTION D-D



SECTION A-A
**NOTE: Slope of Inlet Tops to Match Sidewalk or Parking Slopes within Limits Indicated.



SECTION B-B

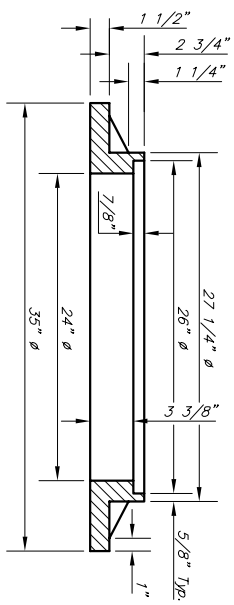
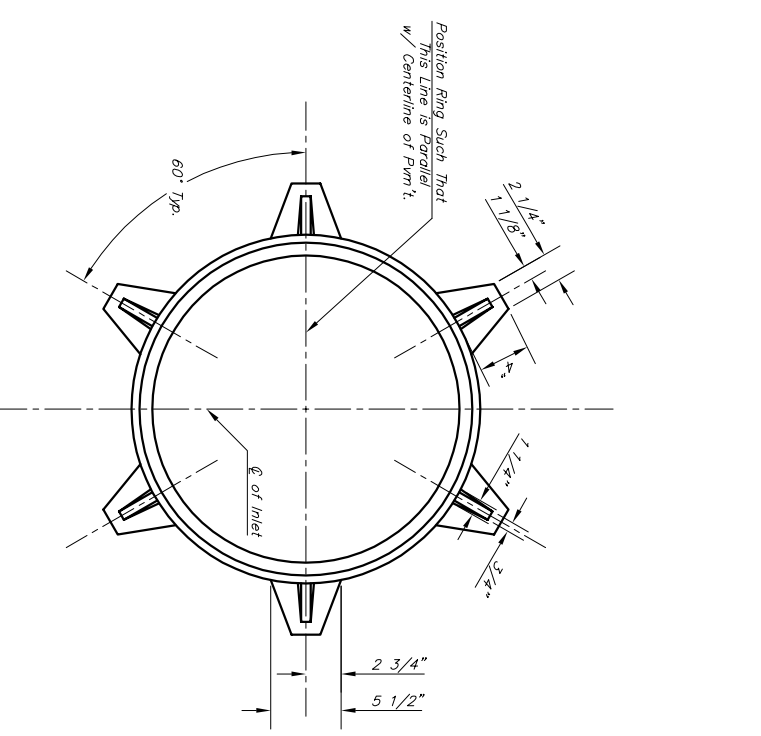
PRECAST SLAB AND FLOOR REINFORCING

MARK	SIZE	NO	LENGTH	NO	LENGTH	NO	LENGTH	NO	LENGTH	NO	LENGTH	NO	LENGTH
* w1	#4	6	6'-7"	6	8'-7"	6	10'-7"	6	12'-7"	6	14'-7"	6	14'-7"
* w2	#4	4	6'-0"	4	8'-0"	4	10'-0"	4	12'-0"	4	14'-0"	4	14'-0"
* w3	#4	13	4'-1"	13	5'-1"	13	6'-1"	13	7'-1"	13	8'-1"	13	8'-1"
* b1	#4	1	4'-9"	1	4'-9"	1	4'-9"	1	4'-9"	1	4'-9"	1	4'-9"
* b2	#4	23	6'-1"	29	6'-1"	35	6'-1"	41	6'-1"	47	6'-1"	53	6'-1"
x1	#4	8	3'-10"	8	4'-2"	8	4'-6"	8	4'-10"	8	5'-2"	8	5'-2"

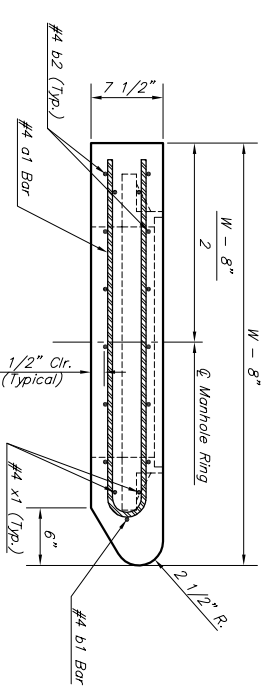
WALL REINFORCING

MARK	SIZE	NO	LENGTH	NO	LENGTH	NO	LENGTH	NO	LENGTH	NO	LENGTH	NO	LENGTH
w1	#4	1	6'-1"	1	6'-1"	1	6'-1"	1	6'-1"	1	6'-1"	1	6'-1"
w2	#4	1	4'-1"	1	5'-1"	1	6'-1"	1	7'-1"	1	8'-1"	1	8'-1"
w3	#4	32	4'-1"	36	4'-1"	40	4'-1"	44	4'-1"	48	4'-1"	52	4'-1"

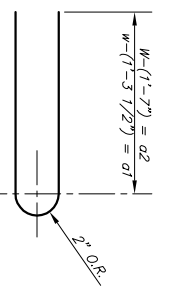
* Field Bend or Cut Reinforcing as Required for Clearance.
① 4 (H - 12') (H - 21') Rounded down to nearest 0.5"
② H - 3'



MANHOLE RING AND COVER
Weight = 180 Lbs.
*See City of Wichita Standard Manhole Ring and Cover Detail Sheet for Cover Details to Be Used With Inlet Frame.



SECTION C-C



BENDING DIAGRAM

STANDARD CURB INLET PRECAST TOPS

W	PRE-CAST TOP SIZE	PIPE SIZE	OL. YD. CONC.
4'-4"	3'-8" x 6'-4" x 1 1/2"	21" & SMALLER	0.382
5'-4"	4'-8" x 6'-4" x 1 1/2"	24" & 30"	0.514
6'-4"	5'-8" x 6'-4" x 1 1/2"	36" & 42"	0.644
7'-4"	6'-8" x 6'-4" x 1 1/2"	48" & 54"	0.772
8'-4"	7'-8" x 6'-4" x 1 1/2"	60" & 66"	0.902

CITY OF WICHITA STANDARD TYPE 1A
Curb Inlet Details

BAUGHMAN COMPANY P.A.
ENGINEERING, SURVEYING, & PLANNING
316-282-7271 • 315 ELLIS • WICHITA, KANSAS 67211
PROJECT NUMBER
489-83756

DESIGN	C.O.W.	DRAWN	SJG/ff	DATE	02/04	SCALE	AS SHOWN	SHEET	80
APPROVED									81

Revised - Feb. 16, 1989