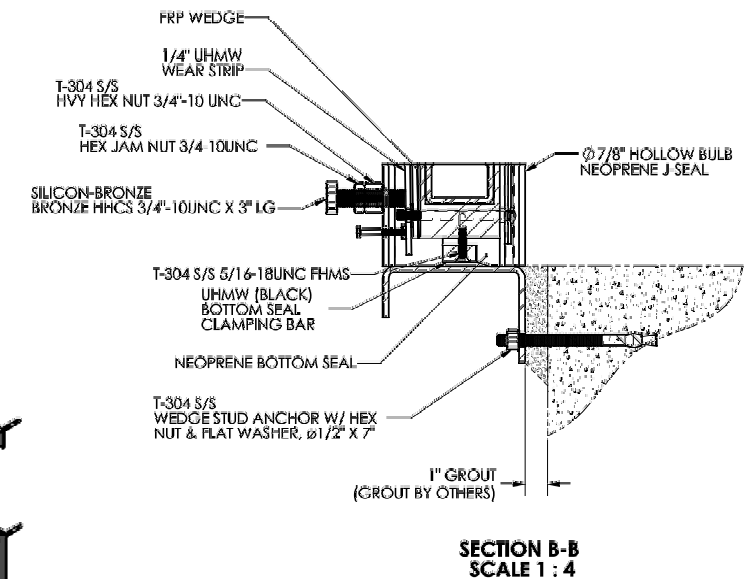
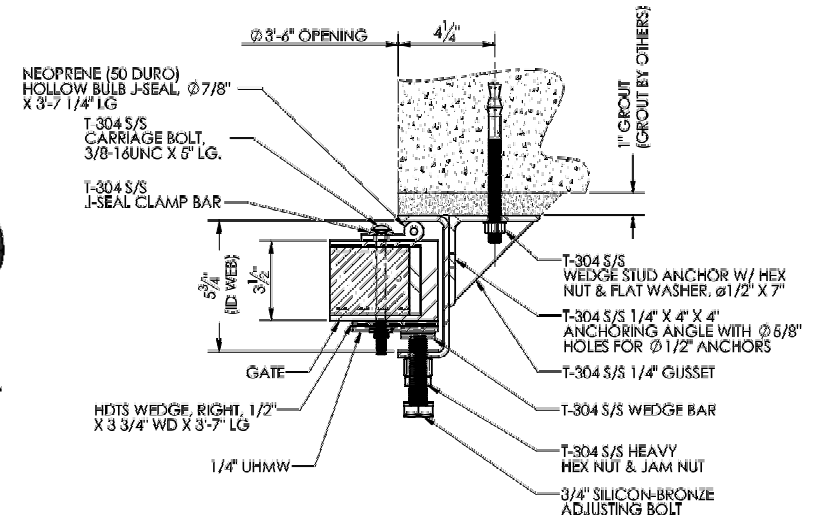
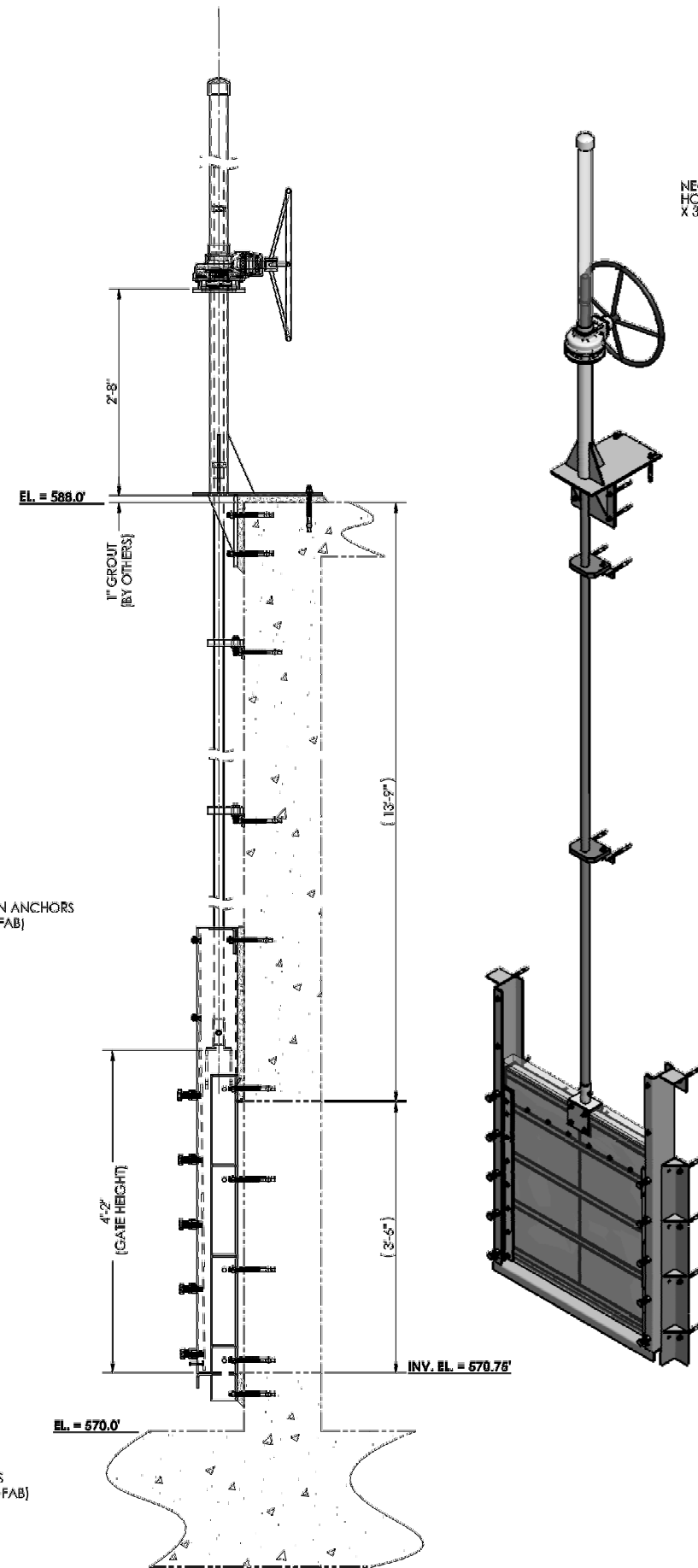
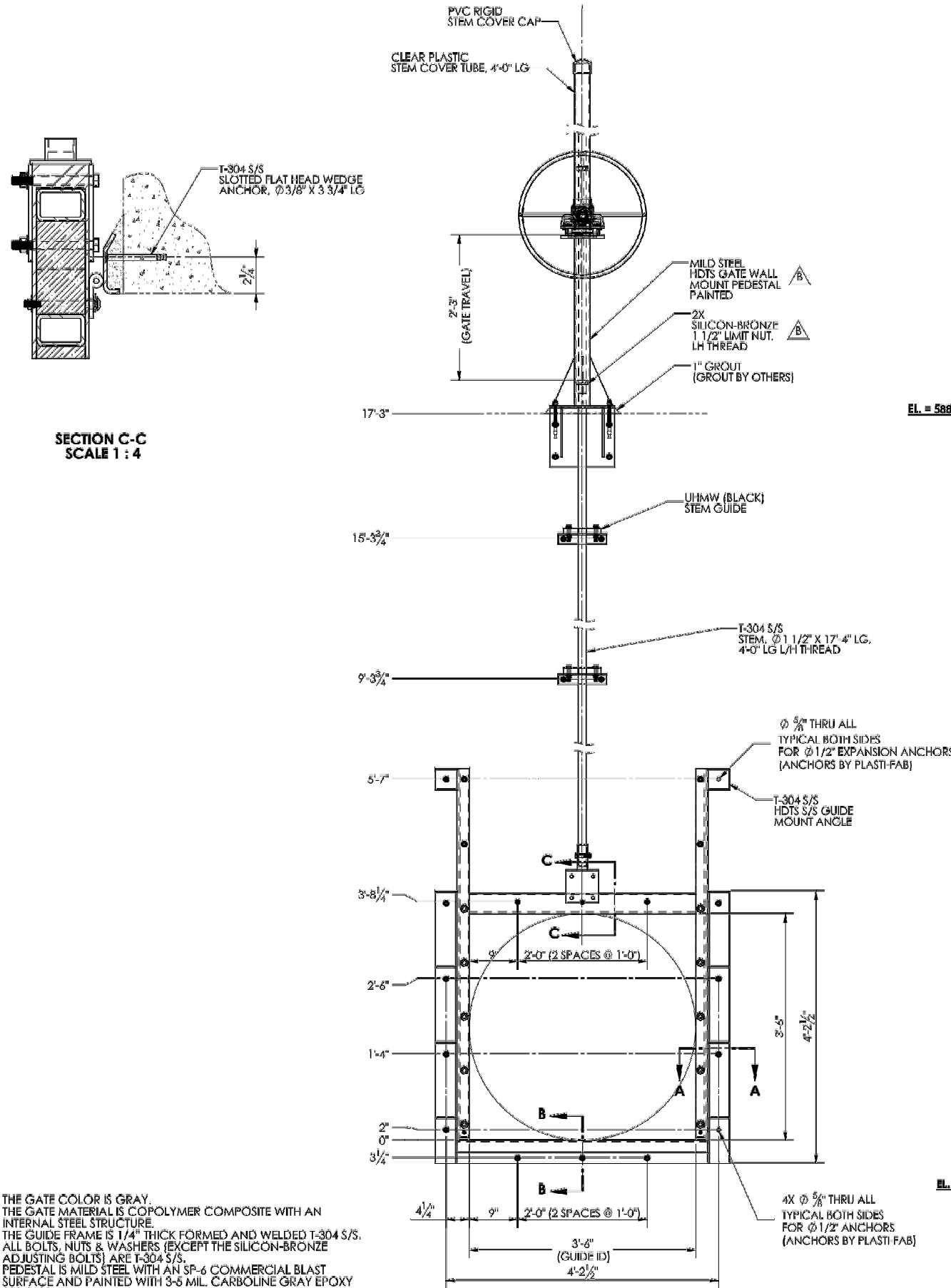


CITY OF WICHITA, KANSAS
WASTEWATER TREATMENT PLANT #2
HEADWORKS IMPROVEMENTS



- NOTES:**
1. THE GATE COLOR IS GRAY.
 2. THE GATE MATERIAL IS COPOLYMER COMPOSITE WITH AN INTERNAL STEEL STRUCTURE.
 3. THE GUIDE FRAME IS 1/4" THICK FORMED AND WELDED T-304 S/S.
 4. ALL BOLTS, NUTS & WASHERS (EXCEPT THE SILICON-BRONZE ADJUSTING BOLTS) ARE T-304 S/S.
 5. PEDESTAL IS MILD STEEL WITH AN SP-6 COMMERCIAL BLAST SURFACE AND PAINTED WITH 3-5 MIL. CARBOLINE GRAY EPOXY 893-0700.

NOTE: THIS SHEET FOR INFORMATION ONLY. SLUICE GATE APPROVAL BY SHOP DRAWING SUBMITTAL.

©2014 MKEC Engineering All Rights Reserved www.mkec.com
 These drawings and their contents, including, but not limited to, all concepts, designs, & ideas are the exclusive property of MKEC Engineering (MKEC), and may not be used or reproduced in any way without the express consent of MKEC.

SLUICE GATE "A", "B" & "C"		
PROJECT NO.	1401010275	
DATE	07/31/14	
SCALE	N.T.S.	
DESIGNED	DRAWN	CHECKED
KJS	DPG	KJS
0	ISSUED FOR CONSTRUCTION	09/18/14
NO.	REVISION	DATE
SHEET NO.		