

©2014 MKEC Engineering All Rights Reserved www.mkec.com
These drawings and their contents, including, but not limited to, all concepts, designs, & ideas are the exclusive property of MKEC Engineering (MKEC), and may not be used or reproduced in any way without the express consent of MKEC.

CONTROL VALVE MANHOLE 1958		
PROJECT NO.	1401010275	
DATE	07/31/14	
SCALE	N.T.S.	
DESIGNED	DRAWN	CHECKED
KJS	DPG	KJS
ISSUED FOR CONSTRUCTION	09/18/14	
NO.	REVISION	DATE

REMOVE FIBERGLASS ENCLOSURE FOR ACCESS DURING RENOVATION - REPLACE & RESEAL UPON COMPLETION.
CAUTION: ELECTRICAL WIRING ATTACHED TO ENCLOSURE.

REMOVE PRECAST CONCRETE PANELS FOR ACCESS DURING RENOVATION - REPLACE & RESEAL UPON COMPLETION

REMOVE LADDER & CAGE - REFURBISH & REPAINT - REPLACE AT ORIGINAL LOCATION

REPLACE VALVE AND OPERATOR

REMOVE PRECAST CONCRETE PANELS FOR ACCESS DURING RENOVATION - REPLACE & RESEAL UPON COMPLETION

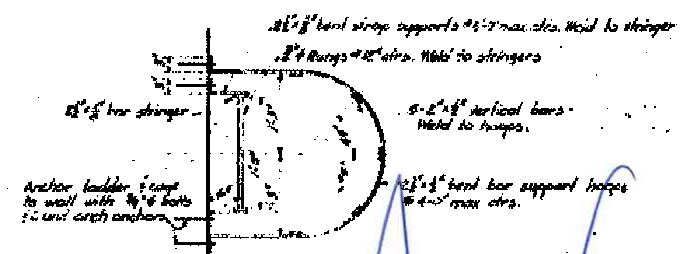
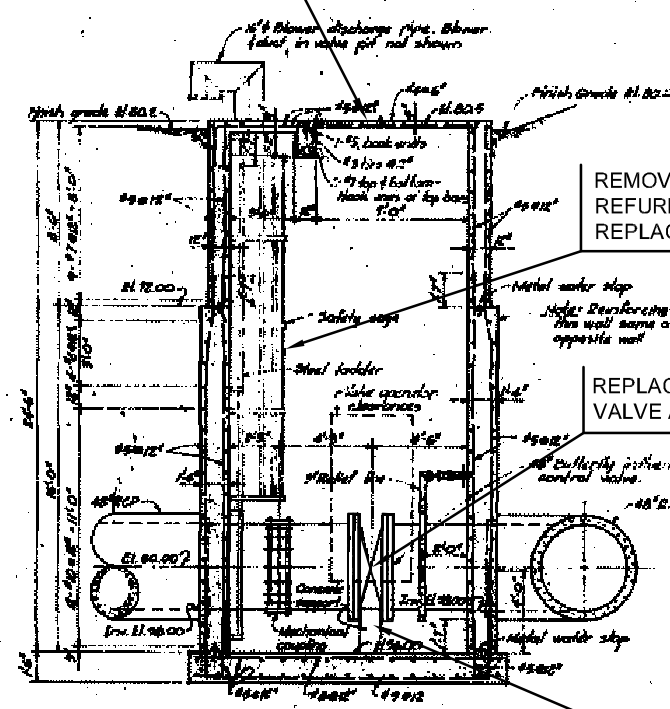
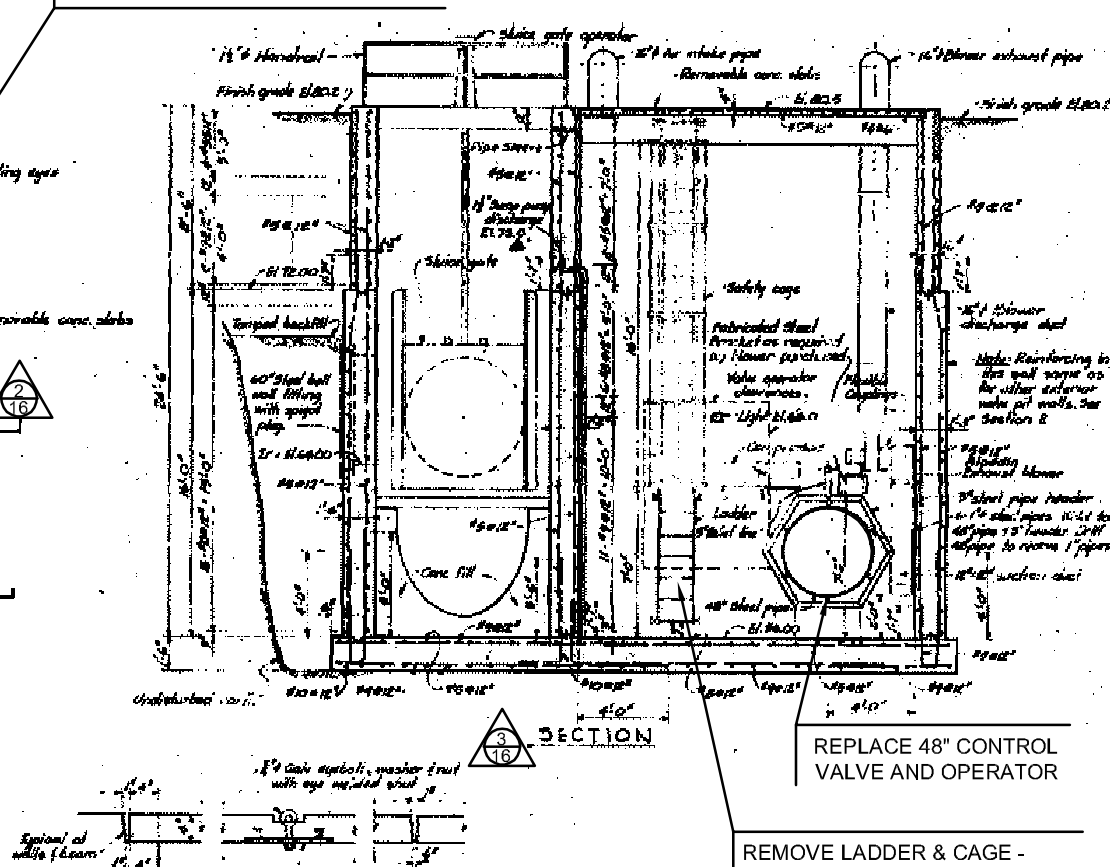
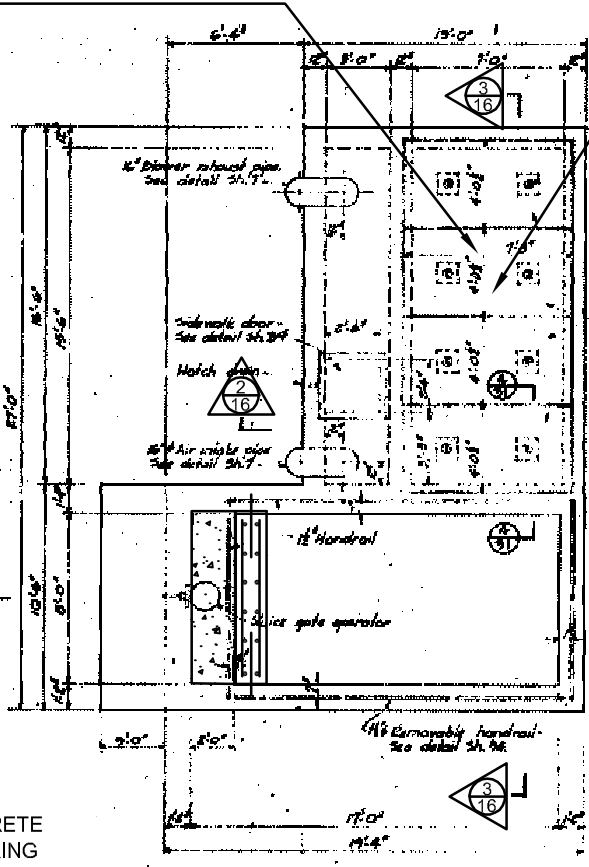
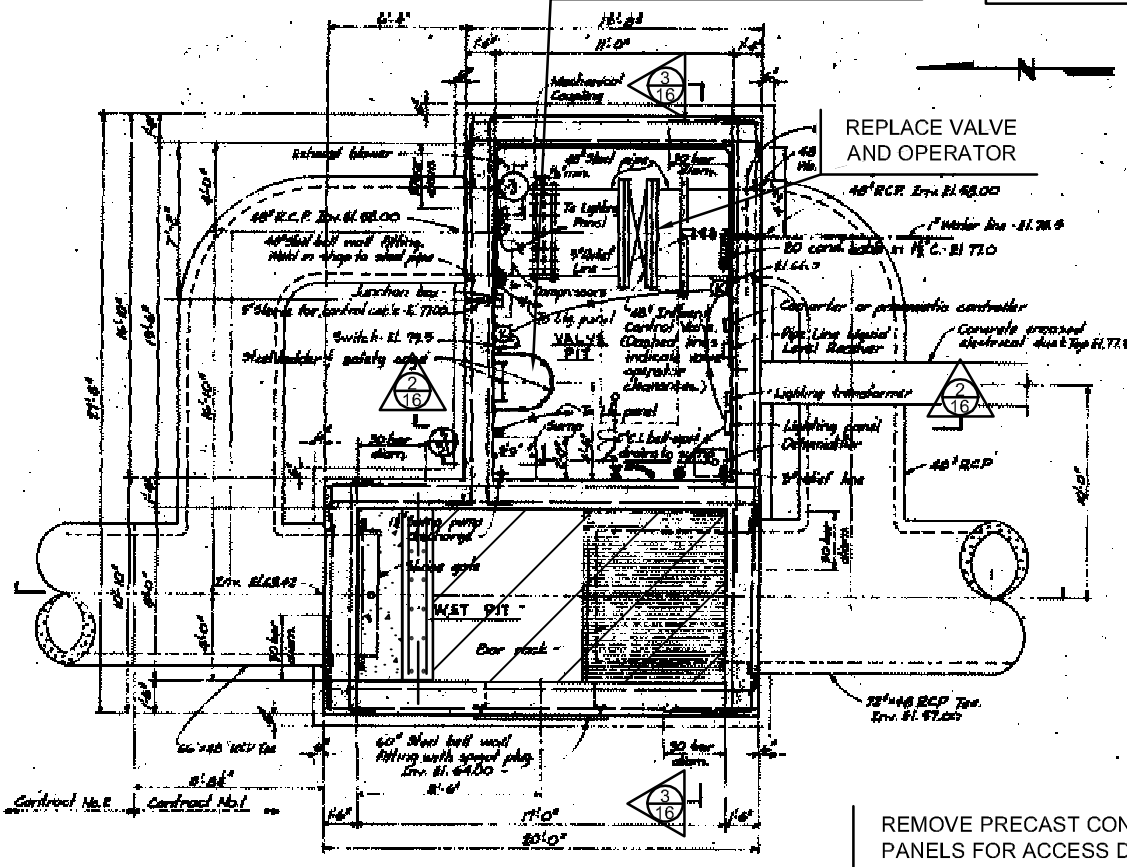
REPLACE 48" CONTROL VALVE AND OPERATOR

REMOVE LADDER & CAGE - REFURBISH & REPAINT - REPLACE AT ORIGINAL LOCATION

REMOVE LADDER & CAGE - REFURBISH & REPAINT - REPLACE AT ORIGINAL LOCATION

REPLACE 48" CONTROL VALVE AND OPERATOR

PROVIDE VALVE SUPPORT



NOTES:

- CONTRACTOR WILL BE RESPONSIBLE FOR COORDINATING OUTAGE FOR REPLACEMENT OF THE 48" INFLUENT CONTROL VALVE WITH ENGINEER AND OWNER.

ALTERNATE #2
ENTIRE SHEET

