

Install 473 lf of
8" Cured-in-Place Liner
from MH 5449-090
to MH 5449-087

POINT REPAIR (PRIOR TO LINING):
Remove and replace 6 lf of 8" pipe from 134 ft
to 140 ft south of MH 5449-090. Repair shall
include two (maybe three) connection replace-
ments and shall also include all site restoration.
(see tv log for notes)

MH # 5449-090
Approx depth = 8.0 ft

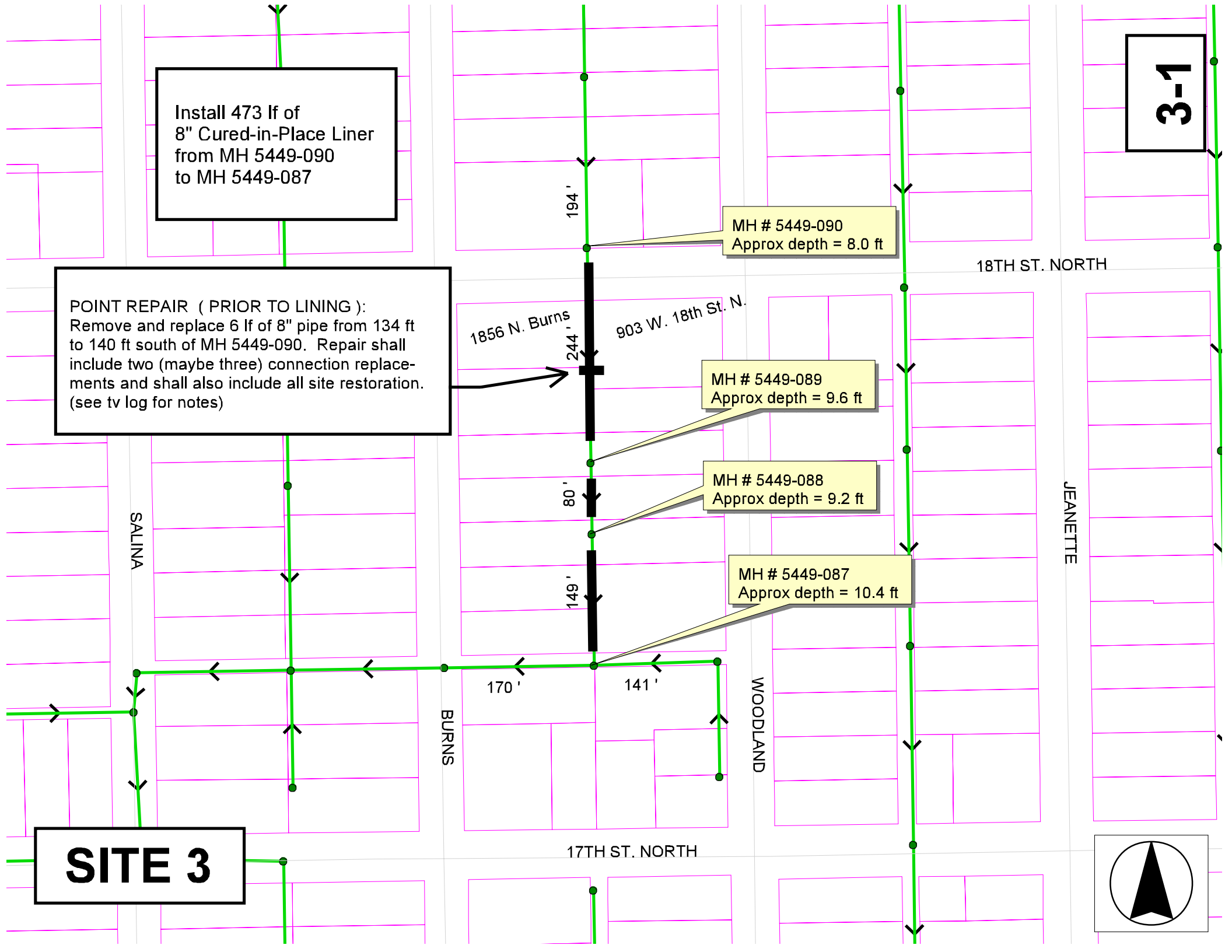
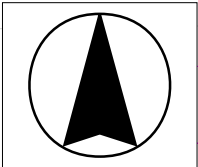
MH # 5449-089
Approx depth = 9.6 ft

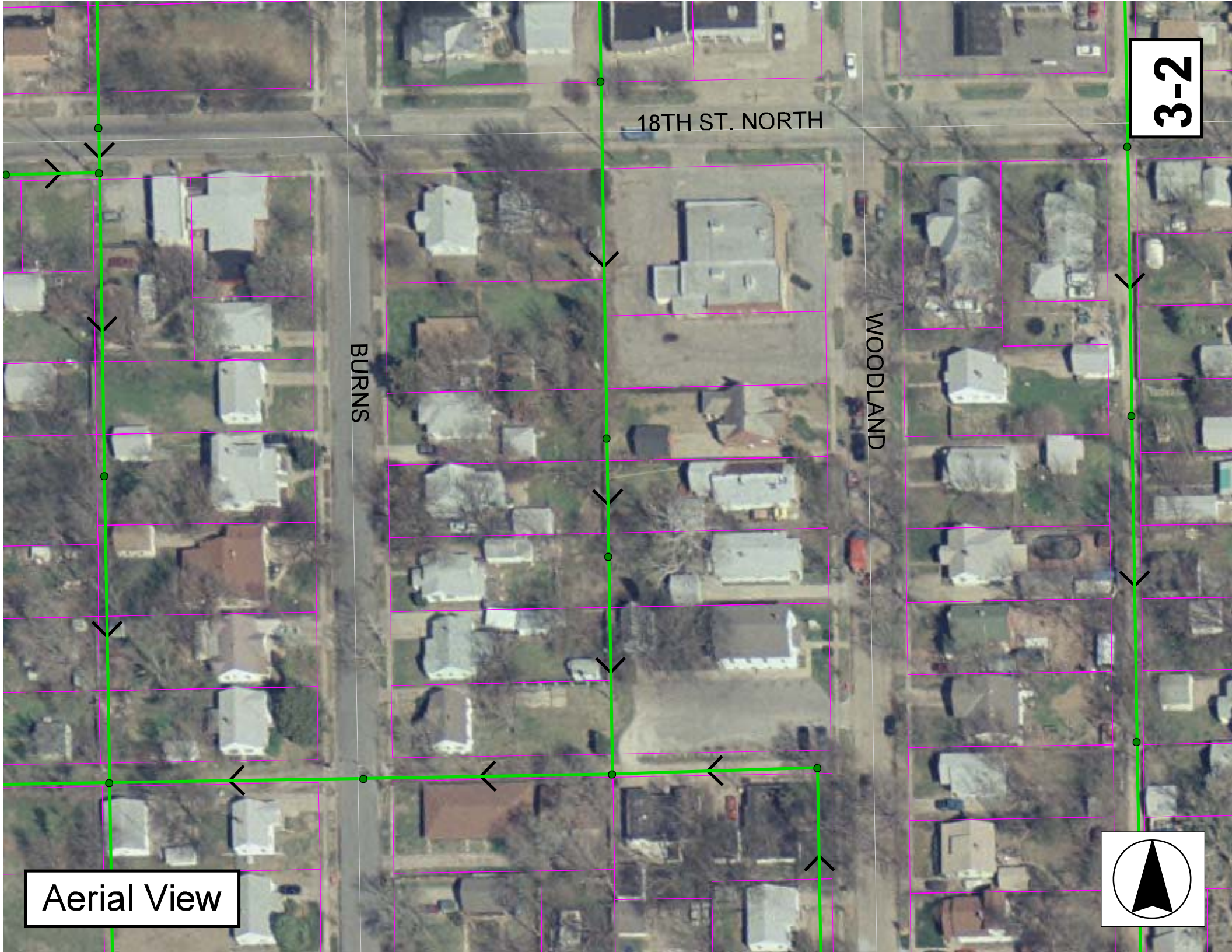
MH # 5449-088
Approx depth = 9.2 ft

MH # 5449-087
Approx depth = 10.4 ft

3-1

SITE 3





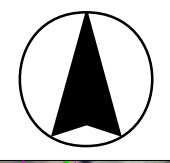
18TH ST. NORTH

BURNS

WOODLAND

Aerial View

3-2



Television Inspection Master Report

1/7/2004
1:40:14PM

US Manhole: 5449-090
DS Manhole: 5449-089

914 W 18TH ST N
1849 N WOODLAND ST

Date Insp: 4/27/2001

Basin: C03F

Dir Televised: Upstream To Downstream

Pipe Information

Shape:	Round	Length Status:	Project No.:	D-172A
Dia/Ht Width:	8 0	Material:	VCP	Index:
Length:	244.0	Slope:	0.098	Surface:
Pipe Sec Length:	Comment:			

Inspection Information

Crew:	694	Percent Full:	20	Tape ID:	V-2806
Weather:	Sunny	Purpose:	TV Existing Line	Counter Start:	00:00
Surface Cond:	N/A	Flow:	Normal Flow	Counter Stop:	
Dyed Test:	No				

Obs. #	VTR Counter Comment	Dist	Location	Description	Rating	Obsrvd (gpm)	Est. (gpm)	Ratings Struct	Clean	Remain (gpm)
1		0.0	US Manhole	5449-090						
2		49.0	Invert	Sag / 40% FLOW						
3		66.0	Invert	Sag / 30% FLOW (camera does not go underwater)						
4		84.0	West	Wye Service	1		0.000	0	0	0.000
5		87.0	East	Wye Service	1		0.000	0	0	0.000
6		109.0	Invert	Sag / 10% FLOW						
7		110.0	West	Wye Service	1		0.000	0	0	0.000
8		112.0	East	Wye Service	1		0.000	0	0	0.000
9		134.0	Invert	Sag / 15% FLOW						
10		135.0	West	Wye Service	1		0.000	0	0	0.000
11		138.0	East	Break-In Conn / in the crown and crooked / needs repair						
12		139.0	East	Break-In Conn / east connections need separated						
13		143.0	Invert	Sag / 25% FLOW						
14		161.0	Invert	Sag / OUT OF SAG						
15		162.0	West	Wye Service	1		0.000	0	0	0.000
16		163.0	East	Break-In Conn	1		0.001	0	0	0.001
17		164.0	East	Wye Service	3		0.000	2	0	0.000
18		164.0	Wye Service	Roots	1		0.002	1	1	0.002
19		171.0	Invert	Sag / 30% FLOW						
20		187.0	West	Wye Service	1		0.000	0	0	0.000
21		190.0	East	Wye Service	1		0.000	0	0	0.000
22		190.0	Invert	Sag / OUT OF SAG						
23		197.0	Invert	Sag / 20% FLOW						
24		223.0	West	Wye Service	1		0.000	0	0	0.000
25		226.0	East	Wye Service	1		0.000	0	0	0.000
26		231.0	West	Break-In Conn / pipe doesn't meet the main properly						
				Not sure if this is active. If it is, we will replace the connection at a later date after Contractor has confirmed the status.						
27		240.0	Quad 1 / U-Rt	Broken Pipe	2		0.008	44	0	0.008
28		245.0	DS Manhole	5449-089						

NOTE: Camera did not look up the wyes to see if active or not, on any portion of this Site

NOTE: Prior to lining the pipe, a **point repair** should be made from 134' to 140' south of MH 5449-090 to replace two (maybe three) connections. The two east connections are too close together and it is possible that only one of those is active. Records indicate the west wye should also be active.

3-3

Television Inspection Master Report

1/7/2004
1:40:14PM

US Manhole: 5449-089 1849 N WOODLAND ST **Date Insp:** 4/27/2001 **Basin:** C03F
DS Manhole: 5449-088 1843 N WOODLAND ST
Dir Televised: Upstream To Downstream

Pipe Information

Shape: Round Length Status: Project No.: D-172A
 Dia/Ht Width: 8 Material: VCP Index:
 Length: 80.5 Slope: 0.099 Surface:
 Pipe Sec Length: Comment: POINT REPAIR BY SEWER MAINTENANCE FROM 6' TO 10' SOUTH OF 5449-089.
 CONNECTION FOR 1849 N WOODLAND IS 8' S OF #089. REMOVED TWO ABANDONED
 WYES AT 6' AND 9'. WORK COMPLETED 08-27-2002 TGC #####

Inspection Information

Crew: 694 Percent Full: 20 Tape ID: V-2806
 Weather: Sunny Purpose: TV Existing Line Counter Start: 15:27
 Surface Cond: Trees & Fences Flow: Normal Flow Counter Stop:
 Dyed Test: No

Maintenance Prior to TV:

Cleaned: 0 Degrease: 0 Point Repair: 0 Manhole Replace: 0
 Root Cut: 0 Root Chem: 0 Other:

Overall Cond:
 Collapsed/Blk: N Structural: Total Remaining Rating
 Max Obs #: 12 Flow: 0.008 0.008 0.010
 Max Obs Length: 80.0 Cleaning: 0 0 0.0
 Comment:

Obs. #	VTR Counter Comment	Dist	Location	Description	Rating	Obsrvd (gpm)	Est. (gpm)	Ratings		
								Struct	Clean	Remain (gpm)
1		0.0	US Manhole 5449-089.							
2		7.0	West	Wye Service / removed, per comment above						
3		8.0	East	Wye Service / 1849 N. Woodland, per comment above						
4		9.0	East	Wye Service / removed, per comment above						
5		19.0	Invert	Sag / 25% FLOW						
6		24.0	Invert	Sag / 40% FLOW						
7		32.0	West	Wye Service	1		0.000	0	0	0.000
8		35.0	East	Wye Service	1		0.000	0	0	0.000
9		58.0	West	Wye Service	1		0.000	0	0	0.000
10		61.0	East	Wye Service	1		0.000	0	0	0.000
11		77.0	Crown	Crack-Radial	4		0.008	10	0	0.008
12		80.0	DS Manhole 5449-088							

Television Inspection Master Report

1/7/2004
1:40:14PM

US Manhole: 5449-088 1843 N WOODLAND ST
DS Manhole: 5449-087 1817 N WOODLAND ST

Dir Televised: Upstream To Downstream

Pipe Information

Shape: Round Length Status: Project No.: D-172A
Dia/Ht Width: 8 0 Material: VCP Index:
Length: 149.0 Slope: 0.101 Surface:
Pipe Sec Length: Comment:

Inspection Information

Crew: 694 Percent Full: 20 Tape ID: V-2806
Weather: Sunny Purpose: TV Existing Line Counter Start: 22:09
Surface Cond: Trees & Fences Flow: Normal Flow Counter Stop:
Dyed Test: No

Maintenance Prior to TV:

Cleaned: 0 Degrease: 0 Point Repair: 0 Manhole Replace: 0
Root Cut: 0 Root Chem: 0 Other:

Overall Cond: Total Remaining Rating
Collapsed/Blk: N Structural: 193 193 130.4
Max Obs #: 24 Flow: 0.112 0.112 0.076
Max Obs Length: 148.0 Cleaning: 129 129 87.2
Comment:

Obs. #	VTR Counter Comment	Dist	Location	Description	Rating	Obsrvd (gpm)	Est. (gpm)	Ratings		
								Struct	Clean	Remain (gpm)
1		0.0	US Manhole 5449-088							
2		7.0	West	Wye Service	1		0.000	0	0	0.000
3		9.0	East	Break-In Conn	1		0.001	0	0	0.001
4		14.0	Crown	Broken Pipe	4		0.030	78	0	0.030
5		15.0	Crown	Broken Pipe	4		0.030	78	0	0.030
6		21.0	Crown	Crack-Radial	1		0.001	1	0	0.001
7		29.0	Joint	Roots	4		0.010	10	25	0.010
8		30.0	West	Wye Service	3		0.000	2	0	0.000
9		30.0	Wye Service	Roots	5		0.030	18	100	0.030
10		32.0	East	Wye Service	1		0.000	0	0	0.000
11		55.0	West	Wye Service	1		0.000	0	0	0.000
12		58.0	East	Wye Service	1		0.000	0	0	0.000
13		70.0	Joint	Roots	2		0.004	2	4	0.004
14		70.0	Quad 4 / U-Lt	Crack-Radial	1		0.001	1	0	0.001
15		81.0	West	Break-In Conn	1		0.001	0	0	0.001
16		83.0	East	Wye Service	1		0.000	0	0	0.000
17		96.0	East	Break-In Conn	1		0.001	0	0	0.001
18		103.0	Quad 1 / U-Rt	Crack-Radial	1		0.001	1	0	0.001
19		107.0	West	Wye Service	1		0.000	0	0	0.000
20		109.0	East	Wye Service	1		0.000	0	0	0.000
21		130.0	West	Wye Service	1		0.000	0	0	0.000
22		132.0	East	Wye Service	1		0.000	0	0	0.000
23		142.0	Quad 1 / U-Rt	Crack-Radial	2		0.002	2	0	0.002
24		148.0	DS Manhole 5449-087							

3-5