

Sanitary Sewer Improvements

to serve

Lot 1, Block 1, Redburn 2nd Addition

Private Project: 2203 PPS (607861)

CITY OF WICHITA, KANSAS

Gary Janzen, P.E. City Engineer

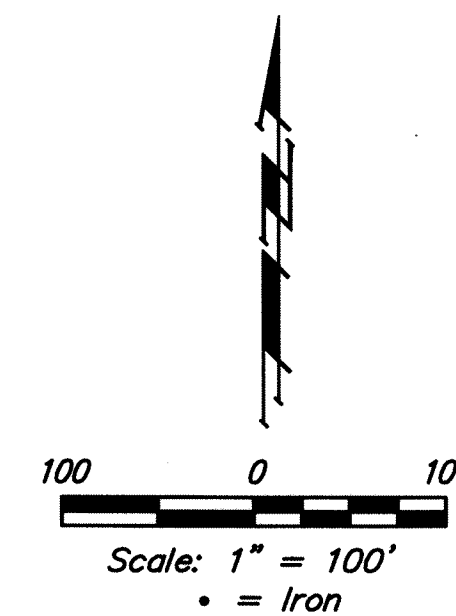
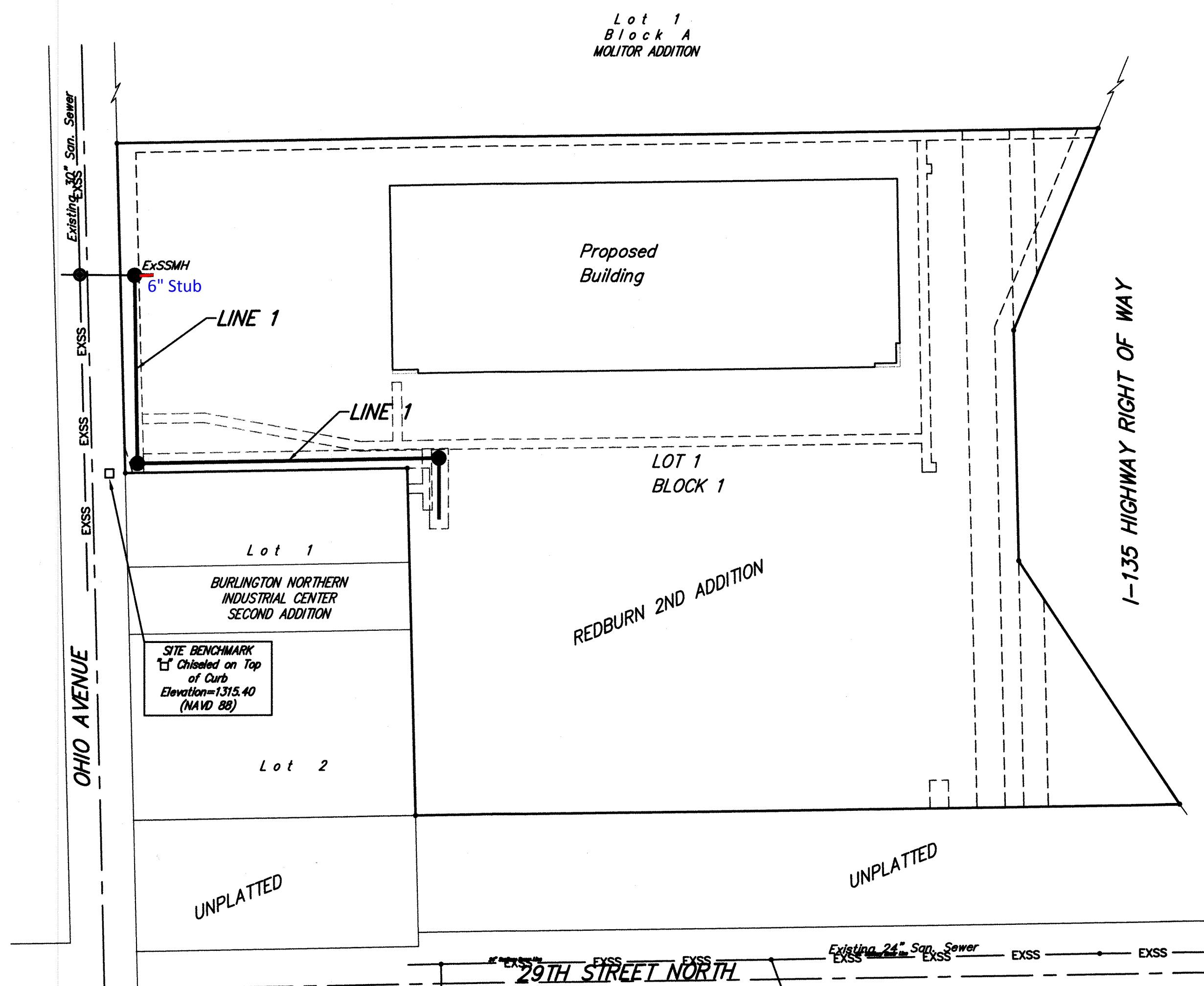
AUGUST 2014

As Built Plans
Contractor: Mies Construction
Superintendent: Albert Williams
Foreman: Mike Gilmore
Company: City of Wichita
Inspector: Caleb Wilson
PDF by: ELS, 09/22/14

T. Mason - City of Wichita, Inspector
 Release Date: 8/25/2014
 :APRosas 10/6/2014

GENERAL NOTES

- Contractor will be required to provide notice to utility companies a minimum of forty-eight (48) hours prior to any excavation, as follows:
 Kansas One-Call 687-2470
 The Contractor must notify the following in case of an emergency:
 Cox Communications 262-4270
 Kansas Gas Service 1-888-482-4950
 Westar Energy 383-8650
 Black Hills Energy (Gas) 1-800-303-0357
 ATT 268-2245
 City of Wichita Water Dept. 268-4563
 City of Wichita Sewer Maint. 268-4024
 City of Wichita Storm Sewer Maint. 268-4090
 City of Wichita Traffic Maint. 268-4034
- Utility service lines, poles, valve boxes, meters, and etcetera are to be adjusted as necessary by others prior to construction unless the plans specifically call for their adjustment by the Contractor or unless the plans specifically identify a utility to be adjusted by its owner during construction. Existing utilities and their location, as shown on the plans, represent the best information obtainable for design. The Contractor will be required to work around existing utilities within the right-of-way which do not conflict with proposed construction.
- All disturbed R/W areas not intended for pavement or sidewalk construction shall be seeded with Kansas Premium Fescue Blend at a rate of 8 lb./1000 Sq. Ft., fertilized with a 16-20-6 ratio at a rate of 4 lb./1000 Sq. Ft., and mulched with Prairie Hay at a rate of 92 lb./1000 Sq. Ft. Mulch shall be "patted" with forks or punched into soil to reduce loss due to wind.
- Rubble from the removal of miscellaneous structures and excess excavation which is to be wasted shall be disposed of on sites to be provided by the Contractor. These sites shall be approved by the Engineer as to suitability, appearance and site location. Locations, in the opinion of the Engineer, that will leave an unsightly appearance will not be approved. All disposal sites must be approved by the Kansas Department of Health and Environment. Material either stockpiled or disposed of in a flood plain would require a Kansas State Board of Agriculture permit. Any material dumped in waters of the United States or wetlands is subject to U.S. Corps. of Engineers permitting regulations. Any material buried or stockpiled beyond approved construction limits would require additional archaeological investigations unless buried in a previously approved borrow location.
- Contractor to remove concrete sidewalk to the nearest construction joint if within 3' of joint. Saw cut if over 3' from joint. Removal and replacement of pavement shall not be paid for directly, but shall be considered incidental to other items in the project.
- Contractor shall furnish the inspector with a copy of the manufacturer's certification for any pipe used on this project after completion of pipe installation. The engineer will not certify the project to the city until pipe certification has been received.
- Trees and shrubs in public right-of-way which are in direct conflict with proposed new construction shall be removed by the Contractor with the Engineer's approval. Trees and shrubs which are not in direct conflict with proposed new construction shall be saved and protected from damage.
- All sewer lines and appurtenances shall be installed in accordance with the most recent edition of City of Wichita, Kansas Standard Specifications and Special Provisions.
- Contractor shall not start work on the project until the project inspector is assigned to the project and is present on the site. Contractor shall not start on the project until all necessary bonds and permits have been obtained. Bonds may include but are not limited to Statutory, Performance & Maintenance Any work done without inspection will be required to be uncovered for inspection.
- The Baseline for this project is the @ of Ohio Ave. with the intersection of 29th ST N = Station 0+00.



BENCHMARK

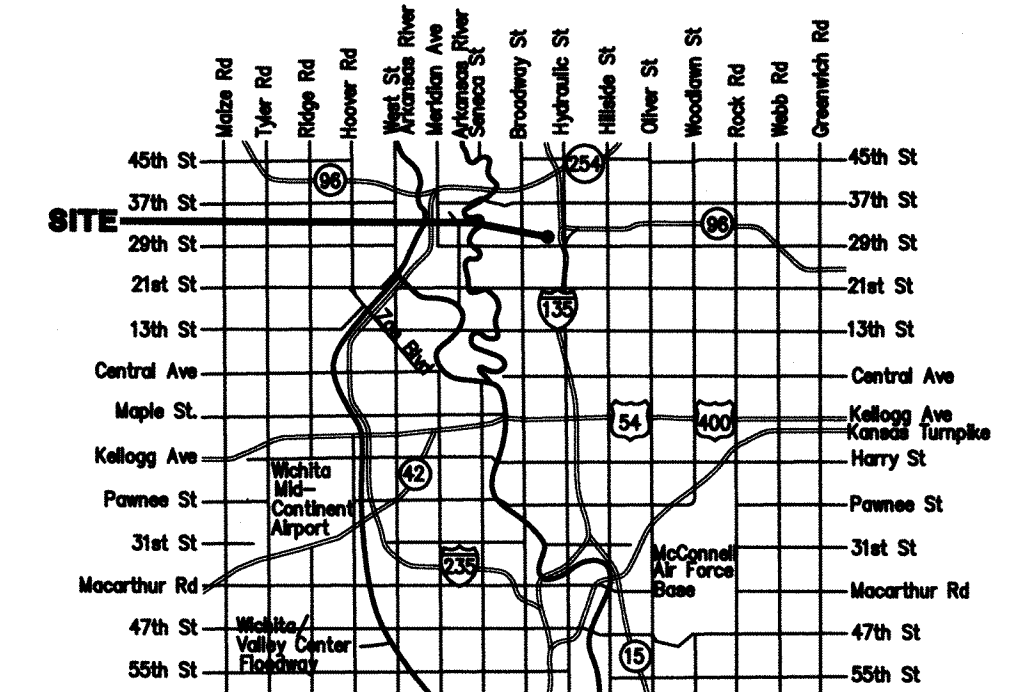
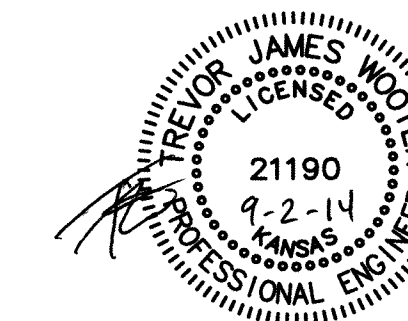
"□" cut top of curb adjacent to the southwest corner of Lot 1, Block 1, Redburn 2nd Addition.
 Elevation = 1315.40 NAVD88

SHEET INDEX:

Title Sheet 1
 Line 1 & Line 2 2
 * Details Available Upon Request and at
<http://wichita.gov/Government/Departments/PMU/Pages/Regulations.aspx>

APPROVED AS NOTED
 BY CITY ENGINEER OF WICHITA
 Engineering *Rebecca Grief* 7/2/2014

NOTE TO CONTRACTORS
 Public Property:
 Inspection and testing for this project is to be provided by a Licensed Consulting Engineering Firm under contract with the Owner/Developer. Said inspection to be in accordance with the City of Wichita standard construction engineering practices and certified by a Professional Engineer Licensed in the state of Kansas. No work shall be performed in dedicated easements or public right-of-way by the Contractor without such inspection nor shall any work be commenced without written authorization by the City Engineer. All Construction and Materials shall comply with the City or Wichita Specifications and Standards (on file and available in the City Engineer's Office).



NO SCALE:

VICINITY MAP



Baughman Company, P.A. 315 Ellis St. Wichita, KS 67211 P 316-262-7271 F 316-262-0149
 ENGINEERING | SURVEYING | PLANNING | LANDSCAPE ARCHITECTURE

