

**GENERAL NOTES:**

1. Contractor will be required to provide notice to utility companies a minimum of twenty-four (24) hours prior to any excavation, as follows:

Kansas One-Call (316)687-2470

The Contractor must notify the following in case of an emergency:

Cox Communications (316)262-4270  
or (316)263-2061

Westar Energy/  
Kansas Gas & Electric Company (800)482-4950  
AT&T 1-555-1212  
City of Wichita Water Department (316)268-4908  
City of Wichita Sewer Department (316)268-4071  
Aquila Natural Gas (316)941-1608  
or (800)303-0357

2. Exist. utilities and their locations, as shown on the plans, represent the best information attainable for design. Location information has been obtained from the various utility companies and is either from company record drawings or company-provided field locations. The Contractor will be required to work around existing utilities which do not conflict with proposed constructions.

3. The Contractor to verify utility locations prior to construction of this project.

4. Utility service and installation shall be coordinated with the respective utility owner. Contacts are:

Kansas Gas Service	Jim Coe	(316)832-3126
Westar Energy	Miles Capps	(316)261-6251
Aquila Networks	Calvin Briggs	(316)942-8811
Wichita Water & Sewer	Kerry Gibson	(316)268-4555
AT&T	Jim Toben	(316)268-2759
Cox Communications	Mark Anaya	(316)262-4270

5. All lawn/turf areas disturbed by construction of proposed improvements shall be restored with the same grass as existing. Restoration of disturbed areas shall include, but not limited to, soil preparation, fertilizing, seeding, mulching (all seeded areas, outside the limits of erosion mat placement), and/or reseeded, and installation of erosion control mat. All seeding work shall be in accordance with the City of Wichita Standard Specifications and the City of Wichita Administrative Regulations No. AR 6.5 which governs cleanup and respiration or replacement following construction. All cost for the soil preparation, seeding and mulching (all seeded areas, outside the limits of erosion mat placement) shall be paid for through the lump sum bid item for "Seeding." All seeded areas within eight feet of the back of new curb shall be covered with an approved erosion mat, which shall be paid for by the measured quantity bid item "Back of Curb Protection (8' wide)."

6. Traffic affected by the construction of this project shall be handled in accordance with the latest edition of the Manual on Uniform Traffic Control Devices.

7. It is the contractor's responsibility to visit this site to better understand the extent of site clearing and restoration to be performed. Site Clearing and Restoration shall include all costs for removal of items which a pay item is not provided.

8. The contractor shall be responsible for preserving property irons. The contractor will be required to re-establish any property irons which are damaged or destroyed by the construction operations. Such irons shall be re-established by a licensed land surveyor in accordance with state laws.

9. Properties within the project limits may have underground sprinkler systems in public right-of-way which conflict with new construction. Contractor will be required to remove such improvements should they not be removed by their owner at the time of construction of the project. The contractor will be required to salvage all sprinkler heads and/or valves and give such material to owner. Portions of underground sprinkler systems not in conflict with new construction shall be protected from damage and shall remain in place. All work in connection with underground sprinkler systems shall be considered as subsidiary to the contract pay items for work.

10. Cuts made in paved surfaces on public property will be repaired by the City's Contractor and charged against the contractor. Unit Repair prices are available from the city at 268-4418. A surcharge may be applicable. Call 268-4418 for details. Repair costs to be paid prior to release of utility service if utilities are effected.

# PRIVATE WATERLINE TO SERVE MAPLE AND MAIZE APARTMENTS

Southwest of Maple and Maize


1792 PPW (607861) 53

CITY OF WICHITA, KANSAS

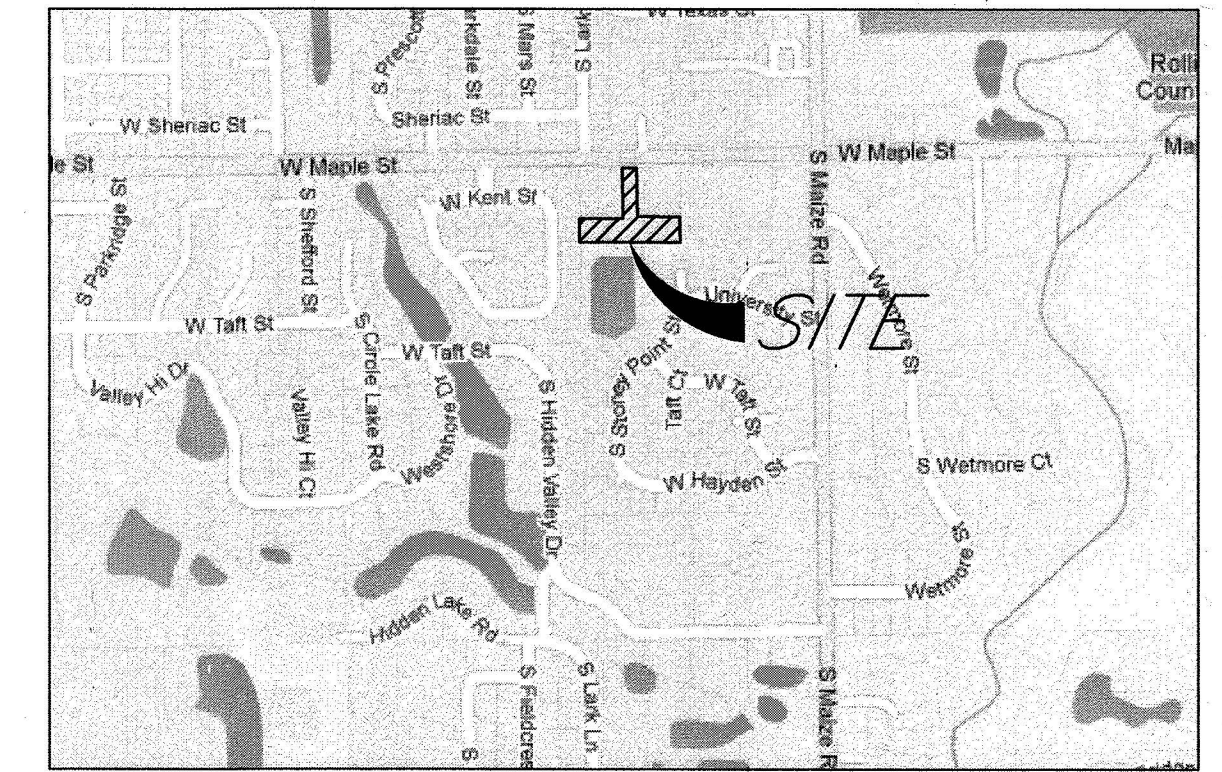
Gary Janzen, P.E., City Engineer

**AS BUILTS**

contractor: C-K Contracting  
inspector: Larry Gann  
4/16/2014



117 E. Lewis,  
Wichita, KS 67202 (316)264-0242



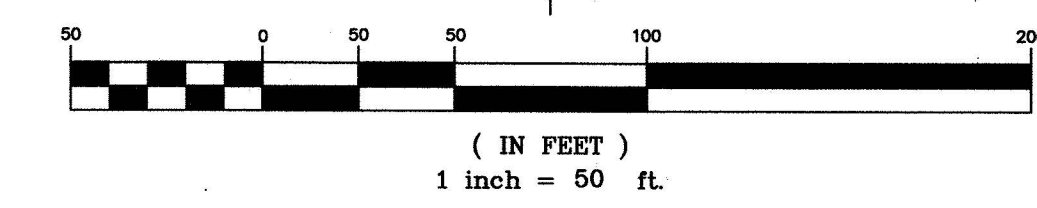
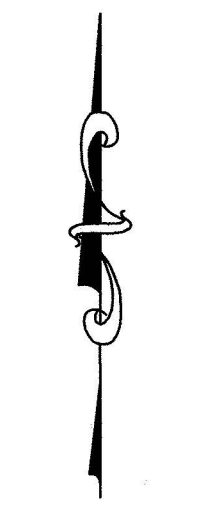
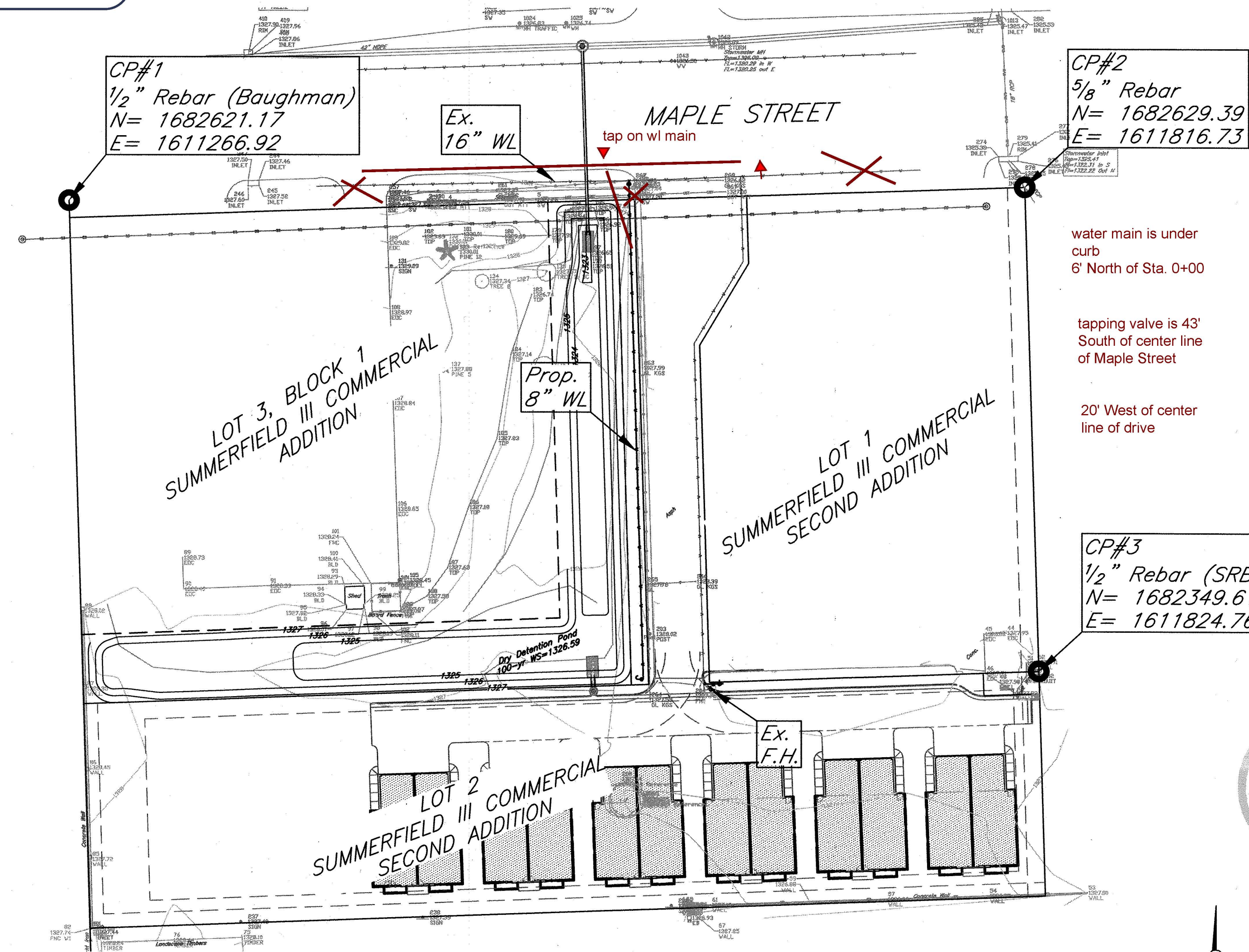
**LOCATION MAP**  
(For Visual Use Only)

**Index of Sheets:**

- 1.0 Cover Sheet
- 2.0 Plan and Profile
- 3.0 Detail Sheet

**Benchmark:**

City of Wichita disc on the northwest corner of Maple and Maize, approximately 11' west of traffic signal, and 1.5' south of the south edge of sidewalk.  
Elevation=1323.01 (NAVD 88)



**JANUARY 2014**


APPROVED AS NOTED  
BY CITY ENGINEER OF WICHITA,  
BY WICHITA WATER & SEWER DEPARTMENT,  
& BY WICHITA FIRE DEPARTMENT

Public Works Rebecca Drail 3/17/14  
Water & Sewer Jim Talle 3-17-14  
Fire RDW 3-21-14

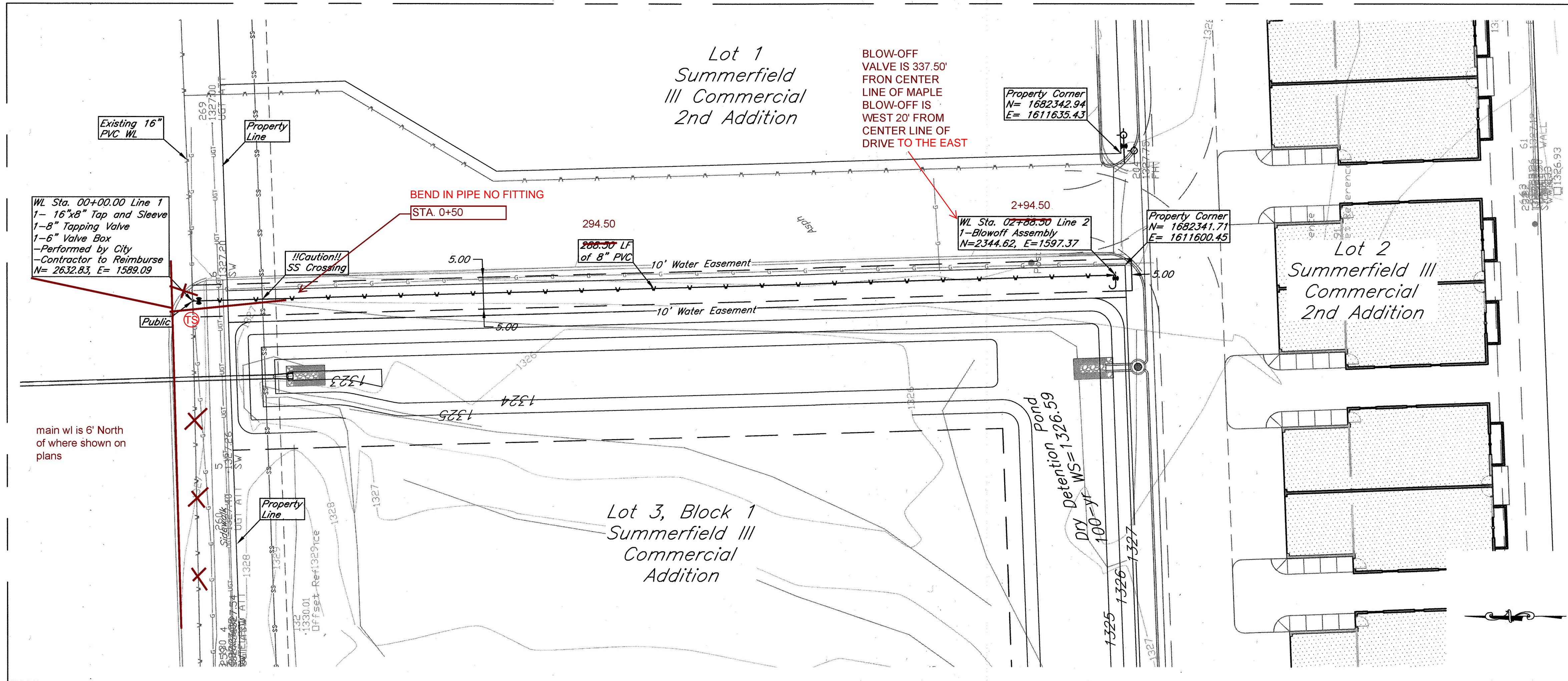
**NOTE TO CONTRACTORS**

Public Property:  
Inspection and testing for the waterline is to be provided by a Licensed Consulting Engineering Firm under contract with the Owner/Developer. Said inspection to be in accordance with the City of Wichita standard construction engineering practices and certified by a Professional Engineer Licensed in the state of Kansas. No work shall be performed in dedicated easements or public right-of-way by the Contractor without such inspection nor shall any work be commenced without written authorization by the City Engineer. All Construction and Materials shall comply with the City or Wichita Specifications and Standards (on file and available in the City Engineer's Office).

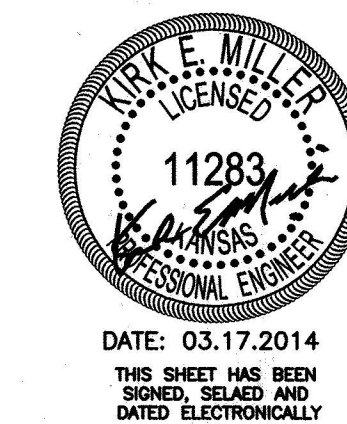
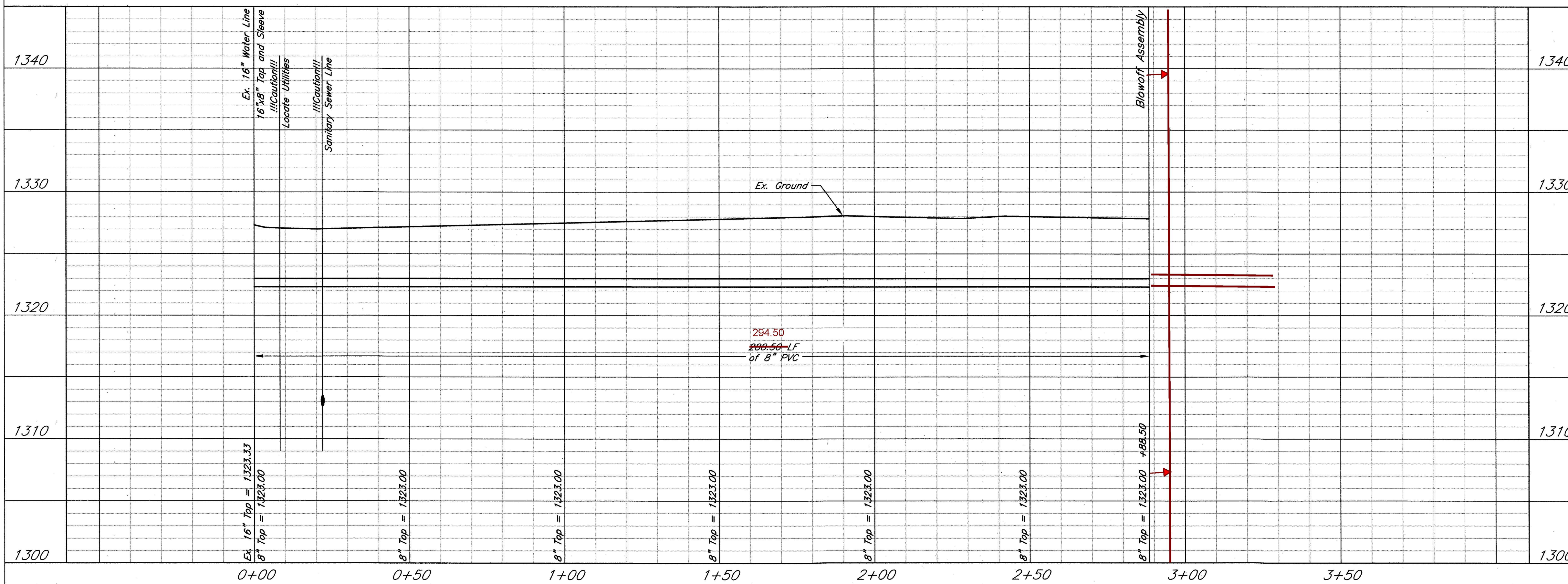
Private Property:  
Installation and testing for the fire protection line is to be performed by a City of Wichita licensed fire protection contractor in accordance with the fire codes as adopted by the City of Wichita. All material and construction practices for the fire protection line shall comply with the fire codes as adopted by the City of Wichita (available from the City of Wichita Fire Department). The Contractor shall not commence work without notification and approval of the Wichita Fire Department. Inspection of the fire protection line is to be provided by a licensed Engineering Firm under contract with the Owner/Developer and the Fire Department. The contractor shall not start work until the project inspector is assigned to the project and present on the site. Any work done without inspection will be required to be uncovered for inspection.



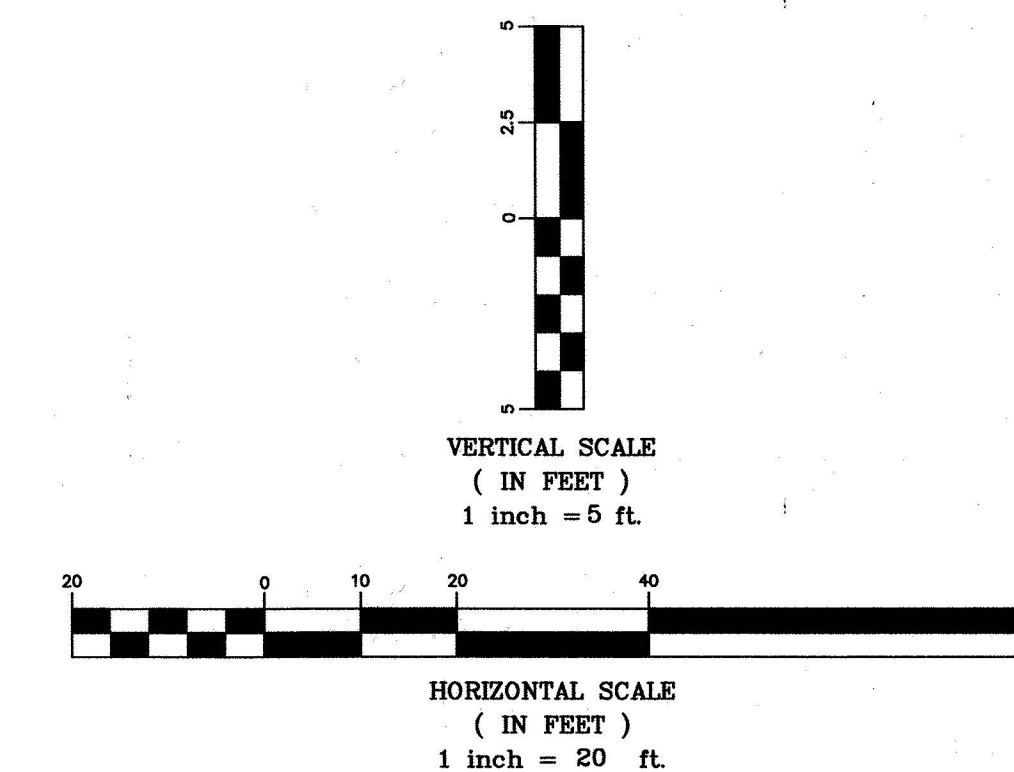
**KEMILLER**  
ENGINEERING PA  
117 E. Lewis, Wichita, KS 67202 (316)264-0242



- Notes
- 8" PVC to be install by either Directional Drill or Open Cut. If Open Cut, pavement patching and curb & gutter repair will be performed to City of Wichita specifications.
  - Concrete sidewalk should be saw-cut and doweled/tied to repair to previous condition post project completion. Repairs will be performed by the City of Wichita, and paid by the Contractor.



DATE: 03.17.2014  
THIS SHEET HAS BEEN  
SIGNED, SEALED AND  
DATED ELECTRONICALLY



Maple and Maize Apartments  
Plan & Profile  
Wichita, Kansas

	PROJECT NUMBER			
	KEM NO. 11136	FILE	DATE 9/2013	SHEET 2.0
DESIGN KM	DRAWN ME	REVISED		

