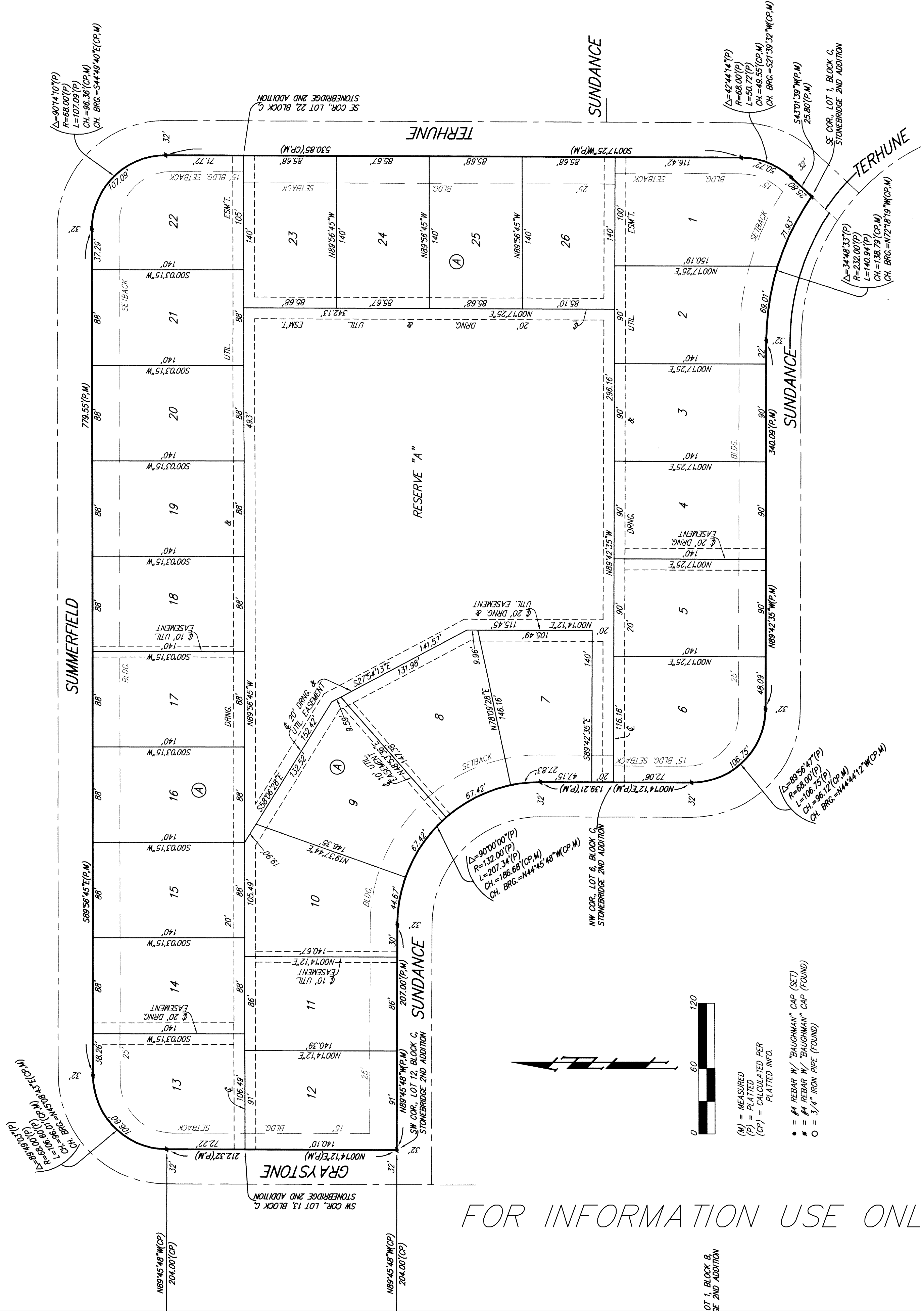


# STONEBRIDGE 3RD ADDITION WICHITA, SEDGWICK COUNTY, KANSAS

LOT 7, BLOCK B,  
3RD ADDITION



FOR INFORMATION USE ONLY

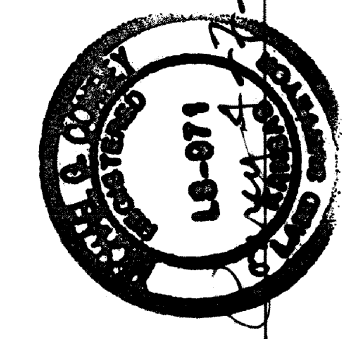
- (M) = MEASURED
- (P) = PLATTED
- (CP) = CALCULATED PER PLATTED INFO.
- = #4 REBAR W/ "BAUGHMAN" CAP (SET)
- = #4 REBAR W/ "ROUND" CAP (FOUND)
- = 3/4" IRON PIPE (FOUND)

SS We, **Baughman Company, P.A.**, Surveyors in and state do hereby certify that we have surveyed and plat the 3rd Addition, Wichita, Sedgwick County, Kansas. The plat is a true and correct exhibit of the described as and being a replat of all of lots 1, 2, 3, 4, 5, 6, 7, 8, 9, 10, 11, 12, 13, 14, 15, 16, 17, 18, 19, 20, 21, 22, 23, 24, 25, 26, Block C, Stonebridge 2nd Addition, Sedgwick County, Kansas, together with all of Terhune Ct as dedicated in said addition.

assessments, setbacks, and dedications by virtue of K.S.A. 12-512(a).

and in the Southeast Quarter of Township 27 South, Range 2 East of the Meridian, Sedgwick County, Kansas

**Baughman Company, P.A.**



**G. Conrey**, Surveyor  
2011

Know all men by these presents that we, the undersigned, have caused the land in the surveyors certificate to be surveyed and platted in Sedgwick County, Kansas. The utility easements as indicated for the construction and maintenance of the drainage easements are hereby granted as shown on the plat. The drainage and utility easements are indicated for drainage purposes and for the construction of all public utilities. Reserve "A" is hereby reserved for open space, berms, sidewalks, drainage purposes, and utilities as confined to easements. Reserve "A" is maintained by the homeowners association for the minimum Building Pad Elevations for the lowest opening to be as indicated on the face of the plat.

**ELKS Land Development, LLC**  
a Kansas limited liability company

**Steven R. Barrett**, Member



Entered on transfer record this 18 day of May, 2011.

**Tricia L. Robello**, L.S. #1246  
Deputy County Surveyor  
Sedgwick County, Kansas

**Kelly B. Arnold**, County Clerk

This plat of "STONEBRIDGE 3RD ADDITION", Wichita, Sedgwick County, Kansas has been submitted to and approved by the Wichita-Sedgwick County Metropolitan Area Planning Commission, Wichita, Kansas.

Dated this 24 day of February, 2011.

**Debra Miller Stevens**, Chair  
**John L. Schlegel**, Secretary



This plat approved and all dedications shown hereon accepted by the City Council of the City of Wichita, Kansas, this 10 day of May, 2011.

**Carl Brewer**, Mayor  
**Karen Sublett**, Mayor's Clerk

LOT	BLOCK	ELEVATION
2-5	A	1,345.0
7-10	A	1,345.0
15-21	A	1,345.0
23-26	A	1,345.0

MINIMUM BUILDING PAD ELEVATIONS FOR LOWEST OPENING TO THE STRUCTURES

BENCHMARK: 604 MAIL IN HIGH LINE POLE, 30' SOUTH OF S1/4 COR., SEC. 12, TWP. 27-S, R-2-E. ELEV. = 1,347.33 NGVD29 (PER COUNTY RECORD) ELEV. = 1,347.81 NAVD83

604 MAIL IN HIGH LINE POLE, 30' SOUTH OF S1/4 COR., SEC. 12, TWP. 27-S, R-2-E. ELEV. = 1,348.58 NGVD29 (PER COUNTY RECORD) ELEV. = 1,349.06 NAVD83 (CALCULATED PER COUNTY RECORD)

NOTE: MASTER PLANNING PLAN FOR DRAINAGE HAS BEEN DEVELOPED FOR THIS SUBDIVISION AND IS ON FILE WITH THE CITY OF WICHITA, KANSAS. ALL DRAINAGE EASEMENTS, RIGHTS-OF-WAY OR RESERVES SHALL REMAIN AT ESTABLISHED GRADES OR AS MODIFIED WITH THE APPROVAL OF THE CITY ENGINEER OF THE CITY OF WICHITA, KANSAS. NO OBSTRUCTIONS WHICH WOULD IMPERE THE FLOW OF THIS DRAINAGE SYSTEM SHALL BE ALLOWED.

We, the undersigned holders of mortgages on the above described property, do hereby consent to this plat of "STONEBRIDGE 3RD ADDITION", Wichita, Sedgwick County, Kansas.

**Collin Stieren**, SVP  
**Collin Stieren**

State of Kansas) SS This is to certify that this plat has been  
Sedgwick County) filed for record in the office of the Register of Deeds, this 19th day  
of May, 2011 at 10:40 o'clock A.M. and is duly recorded.

State of Kansas) SS The foregoing instrument acknowledged be-  
Sedgwick County) fore me, this 14 day of April, 2011, by **Collin Stieren**,  
S. Y. P. of Commerce Bank, N.A., on behalf of the bank.