

PAVING PLANS FOR

KRUG SOUTH ADDITION

PROJECT NO. 472-85060

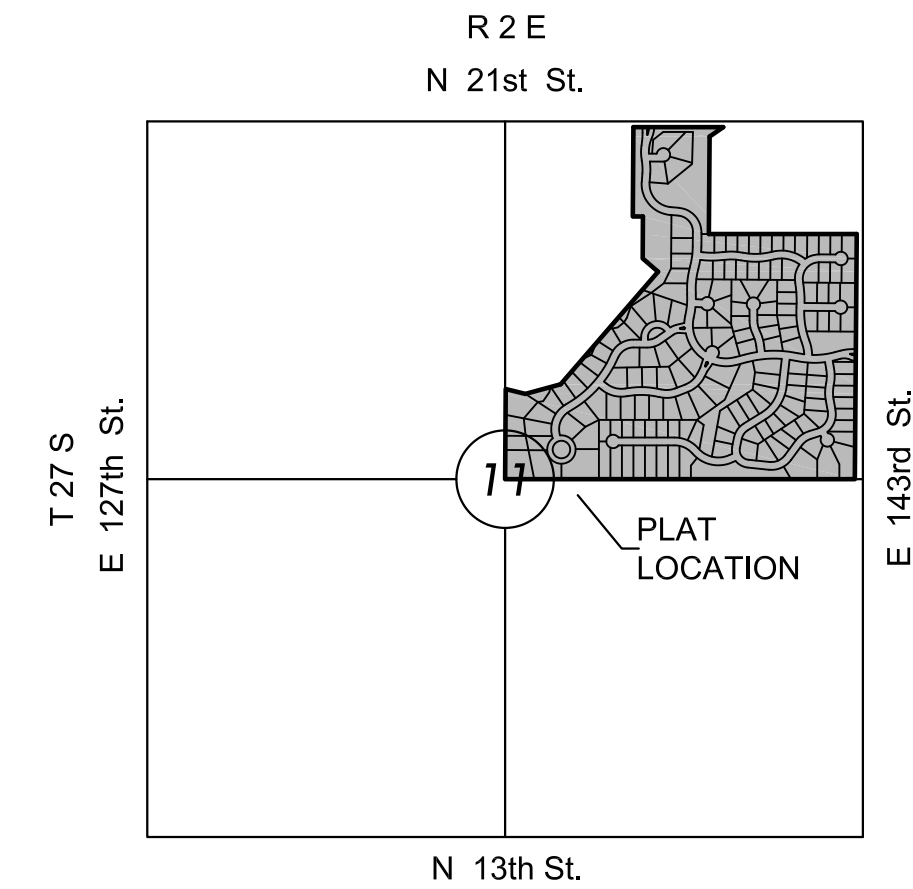
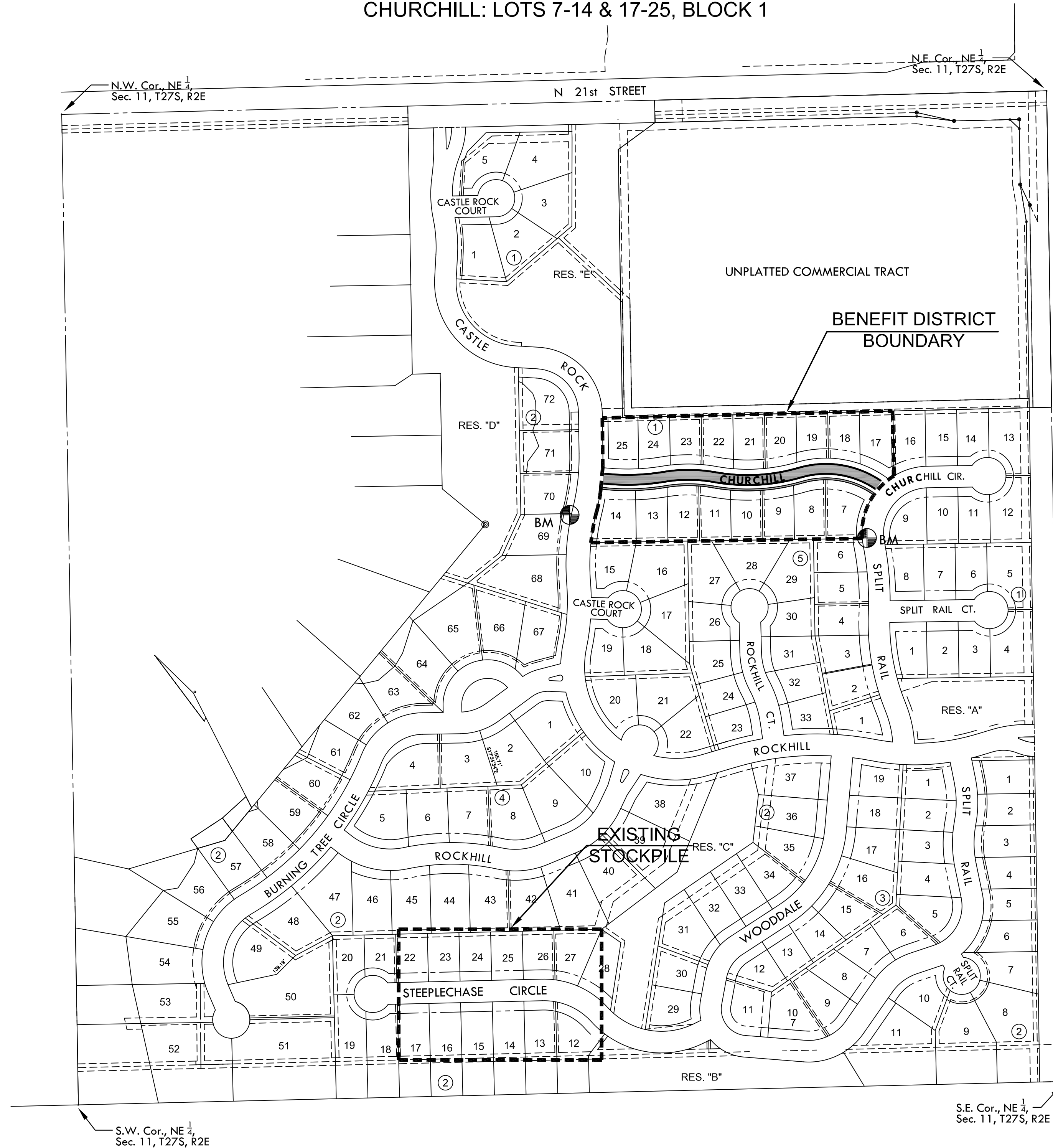
AN ADDITION TO THE CITY OF WICHITA, SEDGWICK COUNTY, KANSAS
GARY JANZEN, P.E. - CITY ENGINEER

OCA NO. 766318
CHURCHILL: LOTS 7-14 & 17-25, BLOCK 1

GENERAL NOTES

1. UNLESS SHOWN OR STATED OTHERWISE ON THESE DRAWINGS, MATERIALS AND CONSTRUCTION SHALL BE IN ACCORDANCE WITH CITY OF WICHITA CONCRETE PAVEMENT AND ASPHALTIC CONCRETE PAVEMENT SPECIFICATIONS.
2. CONTRACTOR WILL BE REQUIRED TO PROVIDE A MINIMUM ADVANCE NOTICE OF SEVENTY-TWO (72) HOURS TO UTILITY COMPANIES PRIOR TO STARTING ANY EXCAVATION AS FOLLOWS:
KANSAS ONE-CALL 1-800-344-7233
OR 687-2470 (LOCAL WICHITA)
THE CONTRACTOR MUST NOTIFY THE FOLLOWING IN CASE OF AN EMERGENCY:

SBC (TELEPHONE)	800-870-8390
COX COMMUNICATIONS (CABLE)	262-0661
WESTAR (ELECTRIC)	393-8600
KANSAS GAS SERVICE (GAS)	832-3101
CITY OF WICHITA WATER & SEWER MAINT.	262-6000
BLACK HILLS ENERGY (GAS)	800-303-0357
3. THE CONTRACTOR SHALL BE RESPONSIBLE FOR PRESERVING PROPERTY IRONS. THE CONTRACTOR WILL BE REQUIRED TO RE-ESTABLISH ANY PROPERTY IRONS WHICH ARE DAMAGED OR DESTROYED BY HIS CONSTRUCTION OPERATIONS. SUCH IRONS SHALL BE RE-ESTABLISHED BY A LICENSED LAND SURVEYOR IN ACCORDANCE WITH STATE LAWS.
4. EXISTING UTILITIES AND THEIR LOCATIONS, AS SHOWN ON THE PLANS REPRESENT THE BEST INFORMATION OBTAINABLE FOR DESIGN. LOCATION INFORMATION HAS BEEN OBTAINED FROM THE VARIOUS UTILITY COMPANIES AND IS EITHER FROM COMPANY RECORD DRAWINGS OR COMPANY PROVIDED FIELD LOCATIONS. THE PLAN LOCATIONS SHOWN ARE NOT GUARANTEED. ADDITIONAL EXISTING UTILITIES MAY ALSO BE ENCOUNTERED.
5. RUBBLE FROM THE REMOVAL OF MISCELLANEOUS STRUCTURES AND EXCESS EXCAVATION WHICH IS TO BE WASTED SHALL BE DISPOSED OF ON SITES TO BE PROVIDED BY THE CONTRACTOR. THESE SITES SHALL BE APPROVED BY THE ENGINEER AS TO SUITABILITY, APPEARANCE AND SITE LOCATION. LOCATIONS THAT, IN THE OPINION OF THE ENGINEER, WILL LEAVE AN UNSIGHTLY APPEARANCE WILL NOT BE APPROVED. ALL DISPOSAL SITES MUST BE APPROVED BY THE KANSAS DEPARTMENT OF HEALTH AND FLOOD PLAIN WOULD REQUIRE A KANSAS STATE BOARD OF AGRICULTURE PERMIT. ANY MATERIAL DUMPED IN WATERS OF THE UNITED STATES OR WETLANDS IS SUBJECT TO U.S. CORPS OF ENGINEERS PERMITTING REGULATIONS. ANY MATERIAL BURIED OR STOCKPILED BEYOND APPROVED CONSTRUCTION LIMITS WOULD REQUIRE ADDITIONAL ARCHAEOLOGICAL INVESTIGATIONS UNLESS BURIED IN A PREVIOUSLY APPROVED BORROW LOCATION.
6. THIS PROJECT INCLUDES A CERTAIN AMOUNT OF ROLL TYPE CURB CONSTRUCTION. ROLL CURBS SHALL BE DEPRESSED THROUGH ALL DRIVEWAY OPENINGS WHEN SUCH DRIVES ARE CONSTRUCTED AS A PART OF THE PROJECT.
7. TRANSITION CURB FROM FULL HEIGHT COMBINATION CURB AND GUTTER TO ROLL TYPE COMBINATION CURB AND GUTTER IS TO BE PAID AS BID FOR LINEAL FEET COMBINED CURB AND GUTTER (3 5/8" ROLL).
8. A SAW CUT OF AT LEAST ONE-HALF THE DEPTH OF THE EXISTING SURFACE COURSES OR ONE-FOURTH THE DEPTH OF THE EXISTING TOTAL PAVEMENT THICKNESS SHALL BE PROVIDED AT LOCATIONS WHERE PROPOSED CONSTRUCTION ABUTS AN EXISTING SURFACE OR PAVEMENT FOR WHICH PARTIAL REMOVAL OF THAT SURFACE OR PAVEMENT IS REQUIRED. SAW JOINT TO FACILITATE REMOVAL WITHIN THREE (3) FEET OF EXISTING JOINTS WILL NOT BE PERMITTED AND FOR SUCH INSTANCES THE LIMITS OF REMOVAL SHALL EXTEND TO THE EXISTING JOINT. SUCH SAW CUTS WILL NOT BE PAID FOR DIRECTLY AND THIS COST SHALL BE CONSIDERED AS SUBSIDIARY TO THE REMOVAL OF SURFACE OR PAVEMENT.
9. CONTRACTOR SHALL RESEED AND MULCH ALL DISTURBED AREAS. COST SHALL BE CONSIDERED SUBSIDIARY TO PROJECT SEEDING.
10. DEVELOPER FOR THIS PROJECT IS:
KRUG SOUTH RESIDENTIAL, LLC
RITCHIE DEVELOPMENT CORPORATION
8100 E. 22nd ST. BLDG. 1000
WICHITA, KANSAS, 67226
CONTACT - TERRY D. RHEA, VICE PRESIDENT
316-684-7300



VICINITY MAP

No Scale

INDEX TO DRAWINGS

SHEET NO.	DESCRIPTION
1	TITLE SHEET
2-3	PAVING DETAILS
4-5	PAVING PLANS
6	EROSION CONTROL PLAN
7	BUBBLE MAP
8-12	BMP SHEETS
13-16	CROSS SECTIONS
17	FINAL PLAT

DATUM & BENCHMARKS

DATUM:
1 - The Project Horizontal Datum is based on the NAD83-1993, Kansas State Plane Coordinate System, South Zone, (US Survey Feet Definition), with a Combined Adjustment Factor (CAF) of 1.0001200144.
All coordinates and dimensions shown on these plans are modified to Ground values.

The following equations can be used for conversion:
Ground Coordinates to State Plane Coordinates = Ground x 1/CAF
State Plane Coordinates to Ground Coordinates = State Plane x CAF

2 - The Vertical Datum used is NGVD29.

UTILITIES:
The underground utilities shown hereon were marked in the field by the utility owners in response to Kansas One Call Ticket Number: 14249188

BENCHMARKS:
BM Chiseled square on top of west curb of Castle Rock between Lots 69 and 70, Block 2.
Elev. = 1359.44 NGVD 29
BM Chiseled "*" on front center of curb inlet on west side of Split Rail between Lots 6 and 7, Block 5.
Elev. = 1374.52 NGVD 29

EARTHWORK SUMMARY

EXCAVATION	150 C.Y.
*COMPACTED FILL (95%)	150 C.Y.
EXCESS (COMPACTED FILL 95%)	600 C.Y.

* 20% SHRINK/SWELL FACTOR ADDED
EXCESS MATERIAL TO BE PLACED & COMPACTED ON SITE.
LOCATION DETERMINED BY ENGINEER/OWNER'S DIRECTION

PROJECT LENGTH

CHURCHILL	752 L.F.
-----------	----------



KRUG SOUTH ADDITION

PAVING & INCIDENTAL DRAINAGE FOR
PHASE 7

©2014 MKEC Engineering All Rights Reserved
www.mkec.com
These drawings and their contents, including, but not limited to, all concepts, designs, & ideas are the exclusive property of MKEC Engineering (MKEC), and may not be used or reproduced in any way without the express consent of MKEC.

TITLE SHEET

PROJECT NO. 472-85060

DATE AUGUST 2014

SCALE 1"=200'

DESIGNED	DRAWN	CHECKED
AJK	BKS	AJK

NO.	REVISION	DATE

SHEET NO.