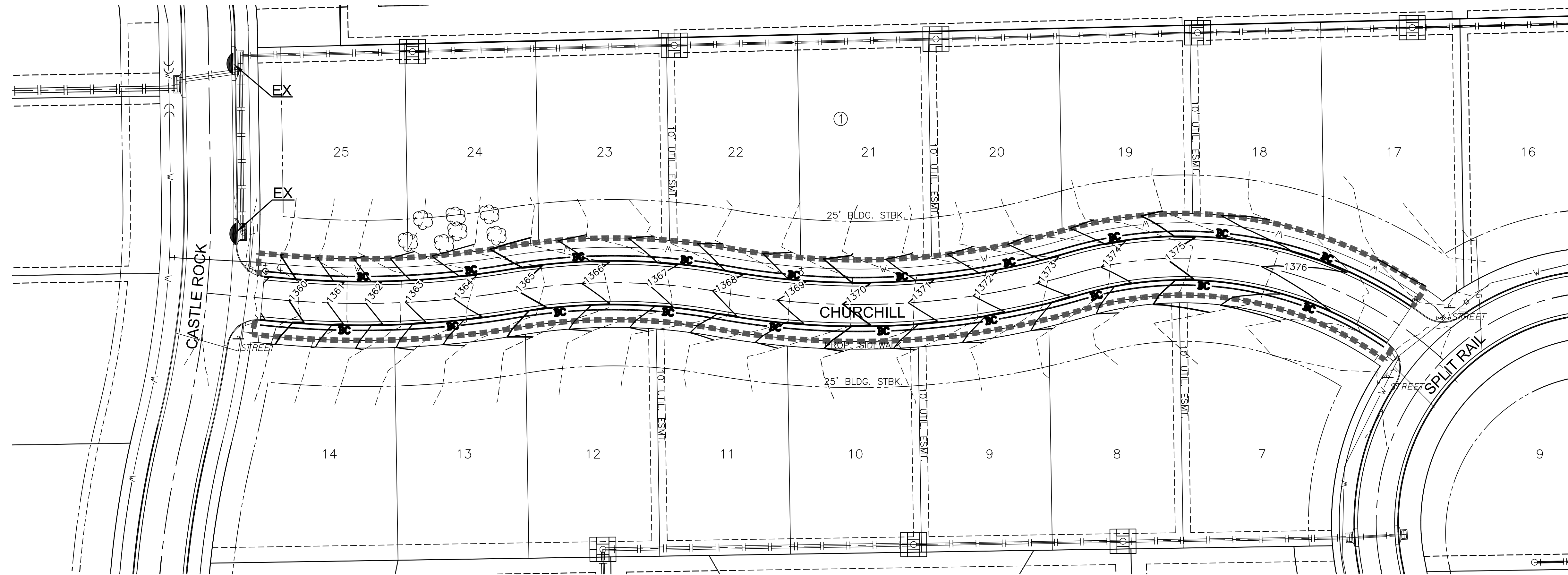


PLOTTED: Wednesday, September 03, 2014 @ 01:47PM



**EROSION CONTROL LEGEND**

- SEEDING LIMITS  
ANNUAL RYE 200 LBS/ACRE (0.4 AC)  
FERTILIZE 10-20-10 @ 1.50 LBS/ACRE  
(QUANTITIES GIVEN FOR INFORMATION ONLY)
- BACK OF CURB PROTECTION (1,503 L.F.)
- EXISTING WATER LINE
- EXISTING STORM WATER SEWER LINE
- PROPOSED CONTOURS
- CURB INLET FILTER (2)
- INLET PROTECTION (8)

**EROSION CONTROL NOTES**

1. EROSION CONTROL IS TO MEET ALL FEDERAL, STATE, COUNTY & LOCAL CODE STANDARDS.
2. CONTRACTOR SHALL PROVIDE AND PRESERVE EROSION PROTECTION THROUGHOUT PROJECT CONSTRUCTION. THE PLAN PROVIDED HERE IS FOR FINAL PROTECTION, VARIOUS PHASES OF THIS PLAN SHALL BE IMPLEMENTED OR MODIFIED TO CONTROL EROSION. MODIFICATIONS OF THE PLAN SHALL BE APPROVED BY THE OWNERS REPRESENTATIVE.
3. CONTRACTOR IS RESPONSIBLE FOR MAINTAINING AND IMPLEMENTING ALL EROSION CONTROL.
4. CONTRACTOR SHALL INSTALL AND MAINTAIN A STABILIZED CONSTRUCTION ENTRANCE AT A LOCATION DETERMINED BY THE ENGINEER.



PAVING & INCIDENTAL DRAINAGE FOR  
**KRUG SOUTH ADDITION**  
PHASE 7

©2013  
MKEC Engineering  
All Rights Reserved  
www.mkec.com  
These drawings and their contents, including, but not limited to, all concepts, designs, & ideas are the exclusive property of MKEC Engineering (MKEC), and may not be used or reproduced in any way without the express consent of MKEC.

**EROSION CONTROL PLAN**

PROJECT NO.	472-85060	
DATE	AUGUST 2014	
SCALE	1"=40'	
DESIGNED	DRAWN	CHECKED
AJK	BKS	AJK

NO.	REVISION	DATE

SHEET NO.  
**6 OF 17**

J:\CIVIL\2014\08\KRD\PHASE 7\2014 EROSION.DWG