

Water Distribution

SIERRA HILLS 2ND ADDITION

Lots 24-31, Block 5

448-90390

OCA# 735511

GENERAL NOTES

1. Contractor will be required to provide a minimum advance notice of seventy-two (72) hours to utility companies prior to starting any excavation as follows:

Kansas One-Call 687-2470

The Contractor must notify the following in case of an emergency:

Cox Communications 260-7204
 Kansas Gas Service 888-482-4950
 Westar 383-8600
 AT&T 1-800-286-8313
 City of Bel Aire Water Department 744-2888
 City of Bel Aire Sewer 744-2888
 City of Wichita Water Department 262-6000

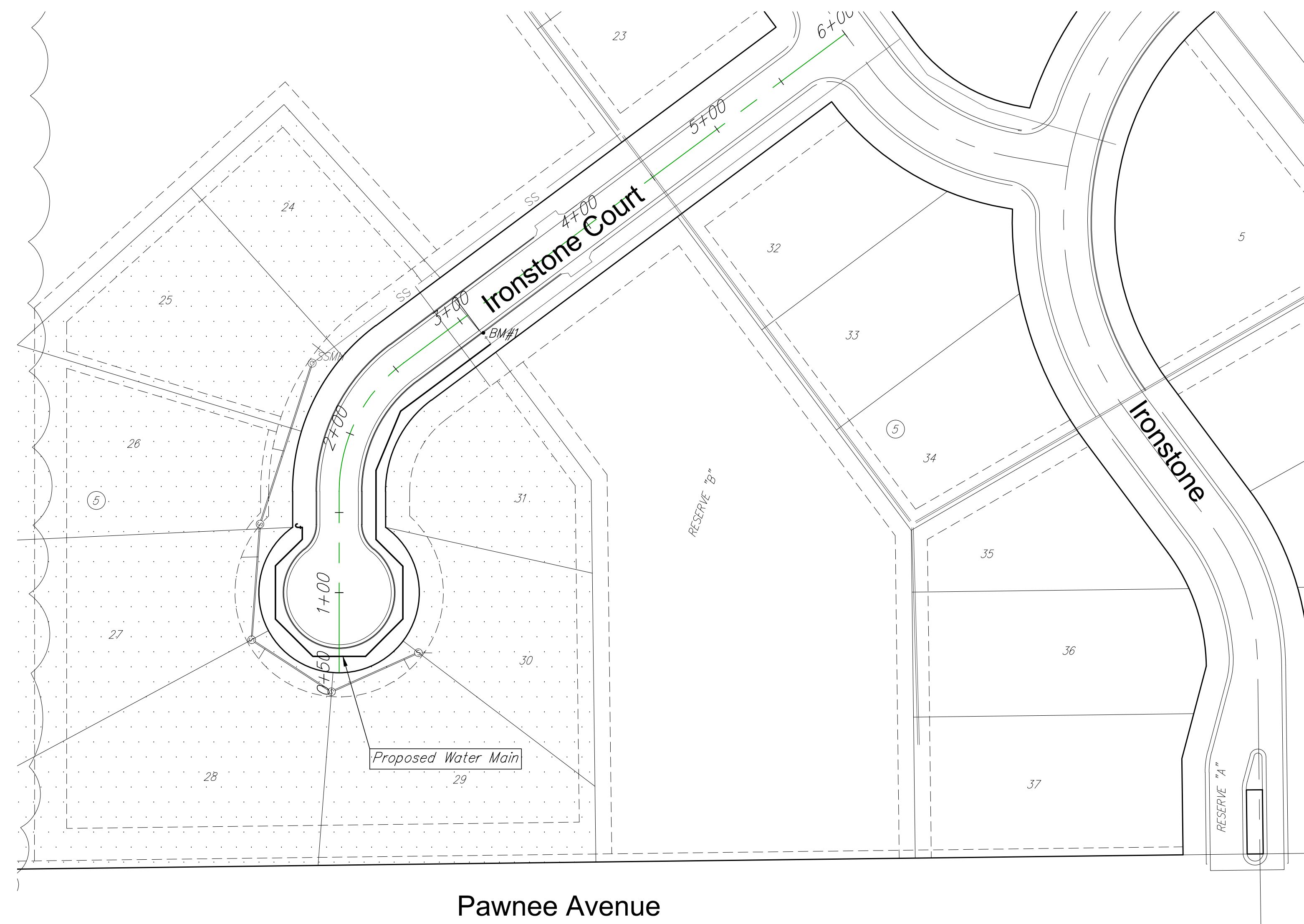
2. Underground utility service lines and overhead utility pole lines are to be adjusted as necessary by others prior to construction unless the plans specifically call for their adjustment by the Contractor or unless the plans specifically identify a utility to be adjusted by its owner during construction. Existing utilities and their location, as shown on the plans, represent the best information obtainable for design. Location information has been obtained from the various utility companies and is either from company record drawings or company-provided field locations. The Contractor will be required to work around existing utilities within the right-of-way which do not conflict with proposed construction.

3. Rubble from the removal of miscellaneous structures and excess excavation which is to be wasted shall be disposed of on sites to be provided by the Contractor. These sites shall be approved by the Engineer as to suitability, appearance and site location. Locations that, in the opinion of the Engineer, will leave an unsightly appearance will not be approved.

4. All disposal sites must be approved by the Kansas Department of Health and Environment. Material either stockpiled or disposed of in a flood plain would require a Kansas State Board of Agriculture permit. Any material dumped in waters of the United States or wetlands is subject to U.S. Corps permitting regulations. Any material buried or stockpiled beyond approved of Engineers construction limits would require additional archeological investigations unless buried in a previously approved borrow location.

5. The Contractor shall give all property owners and/or tenants of developed property directly abutting the construction of this project a minimum of ten (10) days advance notice prior to start of construction.

6. The Contractor shall install a Stabilized Construction Entrance prior to construction of proposed Water Main.



Sheet List Table

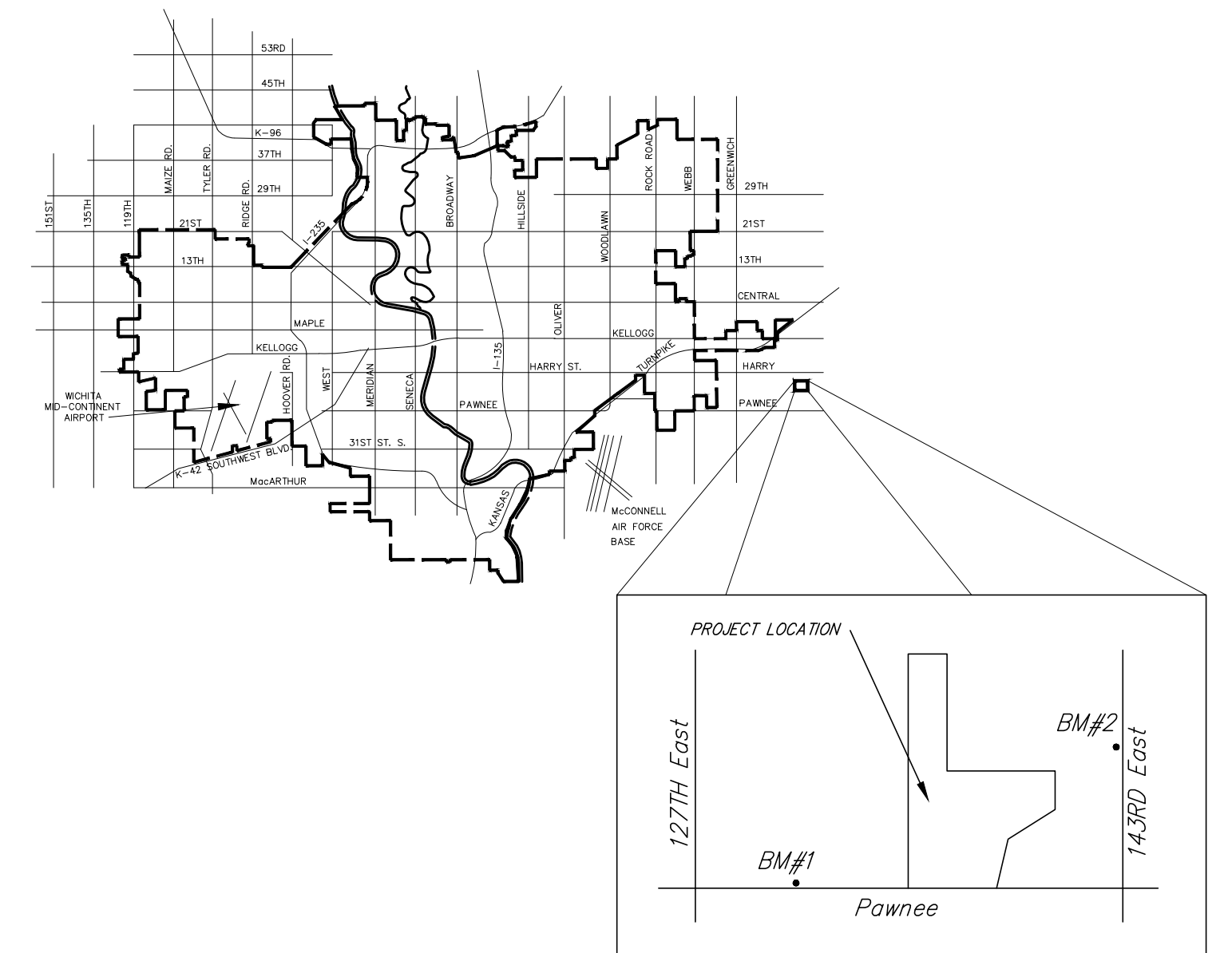
Sheet Number	Sheet Title
1	Water Title
2	Water Connection Details
3	Water Line 1
4	Water Bubble Map
5	BMP Details
6	BMP Details
7	BMP Details
8	BMP Details
9	BMP Details
10	Sierra Hills 2nd Add. Plat

BENCH MARKS

~~BENCH MARK #1: SRB BRASS DISC 1008.17' E. & 55.63' N. OF THE CENTERLINE INTERSECTION PAWNEE AVENUE & 127TH STREET EAST ELEVATION = 1,336.63 (NGVD29)~~

~~BENCH MARK #2: CHISELED SQUARE ON THE TOP OF A CONCRETE HEADWALL AT THE NORTHWEST CORNER OF A BRIDGE, 981 FEET NORTH AND 15 FEET WEST OF THE SOUTHWEST CORNER OF SECTION 36, T27S, R2E ELEVATION = 1308.29 (NGVD29) (SEE VICINITY MAP)~~

BENCH MARK #1: CHISELED SQUARE ON THE TOP OF CURB OF IRONSTONE COURT AT NORTH PROPERTY LINE LOT 31, BLOCK 5 SIERRA HILLS 2ND ADDITION. ELEVATION = 1308.29 (NGVD29)



VICINITY MAP


IMPROVEMENT DISTRICT
Gary Janzen P.E., City Engineer
CITY OF WICHITA, KANSAS



REVISED: 10-20-14



ENGINEERING | SURVEYING | LANDSCAPE ARCHITECTURE | GOVERNMENT
 924 NORTH MAIN WICHITA, KANSAS 67203 P (316) 264-8008 F (316) 264-4621
 WWW.RBKANSAS.COM 4.306F