

Benchmarks:
 BM #1: "□" Cut in Middle of Curb Inlet Top, North Curb of Conroy, Adjacent to SW Corner of Lot 14, Block A, Tyler's Landing 3rd Addition. Elev. = 150.29 (City Datum)

BM #2: "□" Cut in Top of East Curb of High Point, 10' South of End of Return. Adjacent to Lot 1, Block D, Tyler's Landing Addition. Elev. = 155.28 (City Datum)

WL Sta. 0+00 to Sta. 0+55.00
 Install 55.00 L.F. RJPVC 8" Pipe by Directional Drilling. Bid Item "Directional Drilling" to include Drilling and Pipe.

WL Sta. 0+00, Begin Line 1
 BL Sta. -0+26.99, 23' Rt.
 1 - 8" x 8' Tapping Saddle
 1 - 8" Valve Assy. (E)
 (Gate Valve)

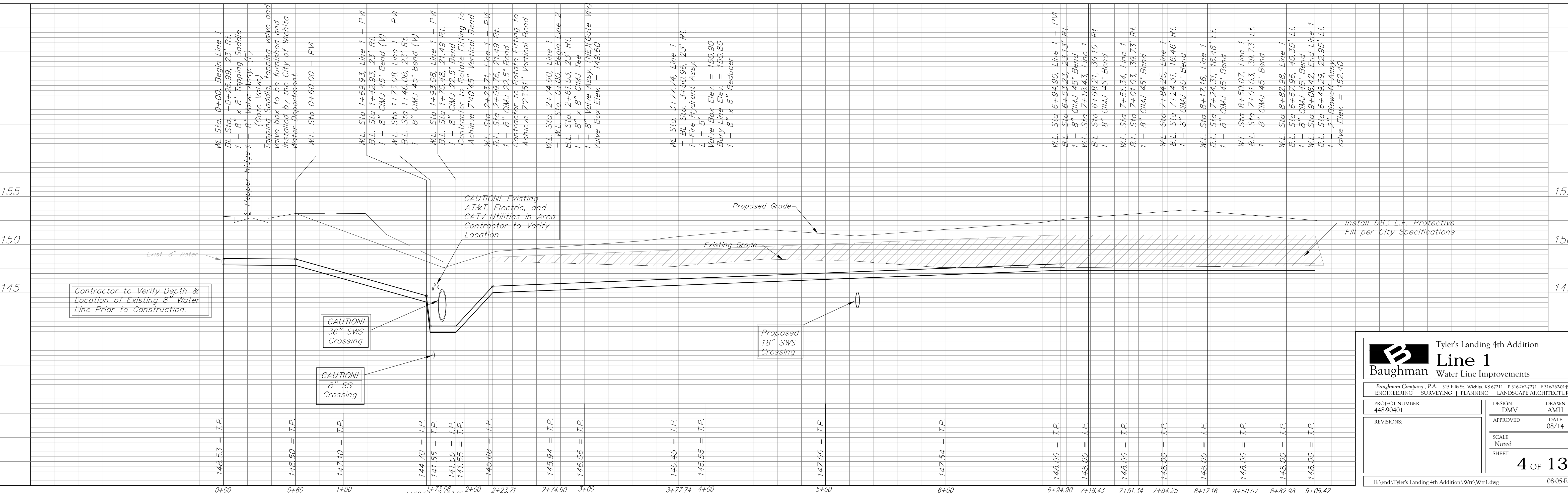
Tapping Saddle, tapping valve and valve box to be furnished and installed by the City of Wichita Water Department.

Curve #1				
Curve Data Based on Centerline				
Rad. = 173' Delta = 47°41'51" Tangent = 76.48'				
Arc = 144.00' L.C. = 139.90' Def./Ft. = 9.93698 Min.				
Chord Lengths				
Station	Arc	6' Right	Defl.	Total Defl.
2+26.41	-	-	0'00"00"	0'00"00"
2+50.00	23.59'	24.39'	3'54"25"	3'54"25"
2+75.00	25.00'	25.85'	4'08"25"	8'02"50"
3+00.00	25.00'	25.85'	4'08"26"	12'11"16"
3+25.00	25.00'	25.85'	4'08"25"	16'19'41"
3+50.00	25.00'	25.85'	4'08"26"	20'28'07"
3+70.41	20.41'	21.11'	3'22"48"	23'50'55"

Curve #2				
Curve Data Based on Centerline				
Rad. = 224.44' Delta = 32°34'10" Tangent = 65.57'				
Arc = 126.93' L.C. = 125.87' Def./Ft. = 7.69781 Min.				
Chord Lengths				
Station	Arc	6' Right	Defl.	Total Defl.
5+60.40	-	-	0'00"00"	0'00"00"
5+75.00	14.60'	15.06'	1'52"23"	1'52"23"
6+00.00	25.00'	25.79'	3'12"27"	5'04'50"
6+25.00	25.00'	25.79'	3'12"27"	8'17'17"
6+50.00	25.00'	25.79'	3'12"26"	11'29'43"
6+75.00	25.00'	25.79'	3'12"27"	14'42'10"
6+87.33	12.33'	12.72'	1'34'55"	16'17'05"



Scale: 1" = 40' Horizontal
 1" = 5' Vertical
 • = Iron



Baughman Tyler's Landing 4th Addition
Line 1
 Water Line Improvements

Baughman Company, P.A. 315 Ellis St. Wichita, KS 67211 P 316-262-7271 F 316-262-0149
 ENGINEERING | SURVEYING | PLANNING | LANDSCAPE ARCHITECTURE

PROJECT NUMBER 44890401	DESIGN DMV	DRAWN AMH
REVISIONS:	APPROVED	DATE 08/14
SCALE Noted		SHEET 4 OF 13

E:\end\Tyler's Landing 4th Addition\Wtr\Wtr.dwg 08-05-E124