

# Lateral 4, Main 21, Four Mile Creek SIERRA HILLS 2ND ADDITION PROJECT NO. 468-84814 O.C.A. NO. 744331

## GENERAL NOTES

1. Contractor will be required to provide a minimum advance notice of seventy-two (72) hours to utility companies prior to starting any excavation as follows:

Kansas One-Call 687-2470

The Contractor must notify the following in case of an emergency:

Cox Communications 262-7204  
 Kansas Gas Service 888-482-4950  
 Westar 383-8600  
 AT&T 1-800-286-8313  
 City of Wichita Water Department 262-6000  
 City of Wichita Sewer Maintenance 262-6000

2. Underground utility service lines and overhead utility pole lines are to be adjusted as necessary by others prior to construction unless the plans specifically call for their adjustment by the Contractor or unless the plans specifically identify a utility to be adjusted by its owner during construction. Existing utilities and their location, as shown on the plans, represent the best information obtainable for design. Location information has been obtained from the various utility companies and is either from company record drawings or company-provided field locations. The Contractor will be required to work around existing utilities within the right-of-way which do not conflict with proposed construction.

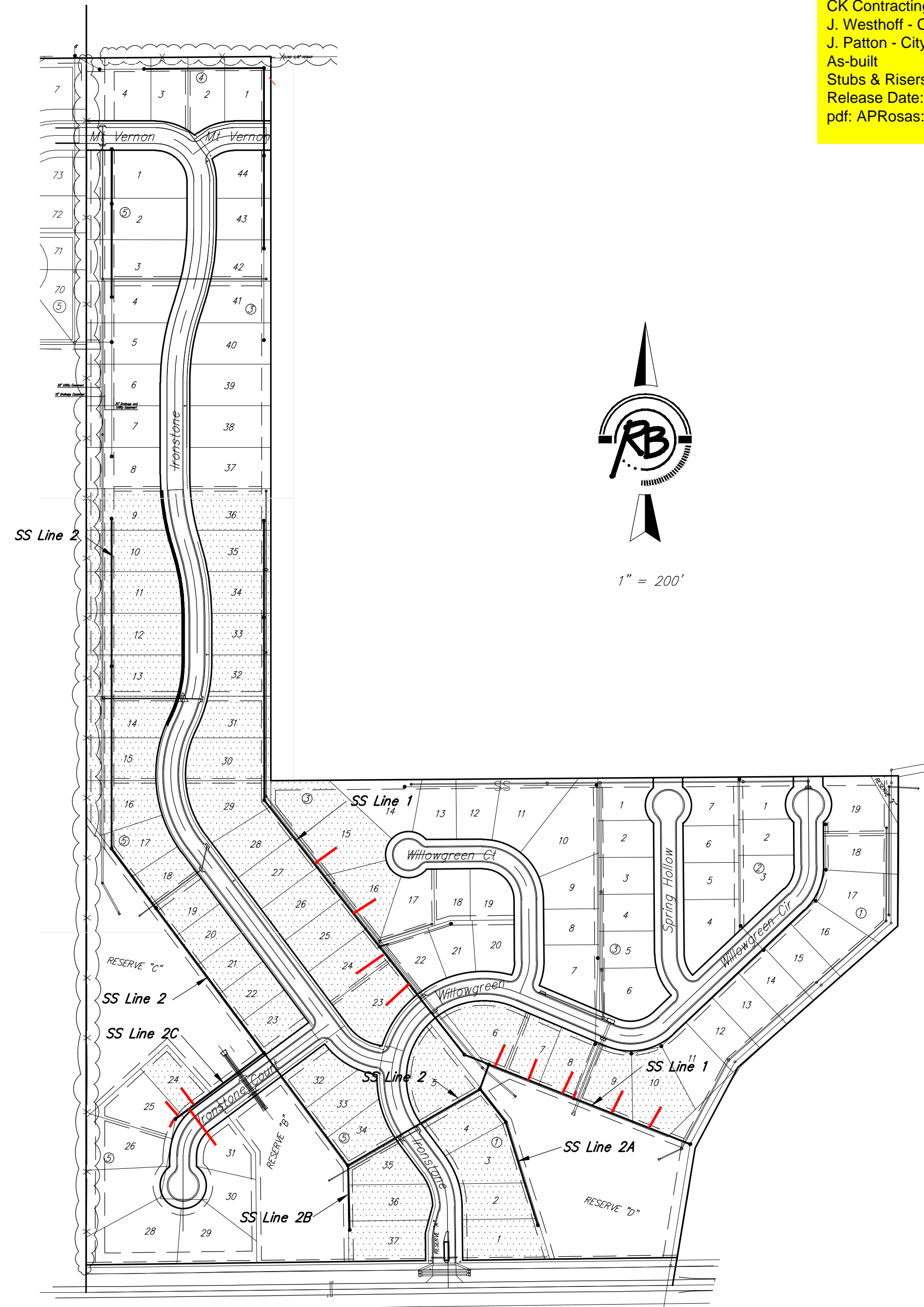
3. Rubble from the removal of miscellaneous structures and excess excavation which is to be wasted shall be disposed of on sites to be provided by the Contractor. These sites shall be approved by the Engineer as to suitability, appearance and site location. Locations that, in the opinion of the Engineer, will leave an unsightly appearance will not be approved.

4. All disposal sites must be approved by the Kansas Department of Health and Environment. Material either stockpiled or disposed of in a flood plain would require a Kansas State Board of Agriculture permit. Any material dumped in waters of the United States or wetlands is subject to U.S. Corps permitting regulations. Any material buried or stockpiled beyond approved of Engineers construction limits would require additional archeological investigations unless buried in a previously approved borrow location.

5. The Contractor shall give all property owners and/or tenants of developed property directly abutting the construction of this project a minimum of ten (10) days advance notice prior to start of construction.

6. The Contractor shall seed, fertilize and mulch all disturbed areas upon completion of construction. Incidental to the bid item for "Project Seeding".

CK Contracting - Contractor  
 J. Westhoff - City of Wichita, Field Project Engr.  
 J. Patton - City of Wichita, Inspector  
 As-built  
 Stubs & Risers  
 Release Date: 11/20/2012  
 pdf: APRosas:3/06/2013



 IMPROVEMENT DISTRICT

CITY OF WICHITA, KANSAS  
 GARY JANZEN, P.E. - INTERIM CITY ENGINEER



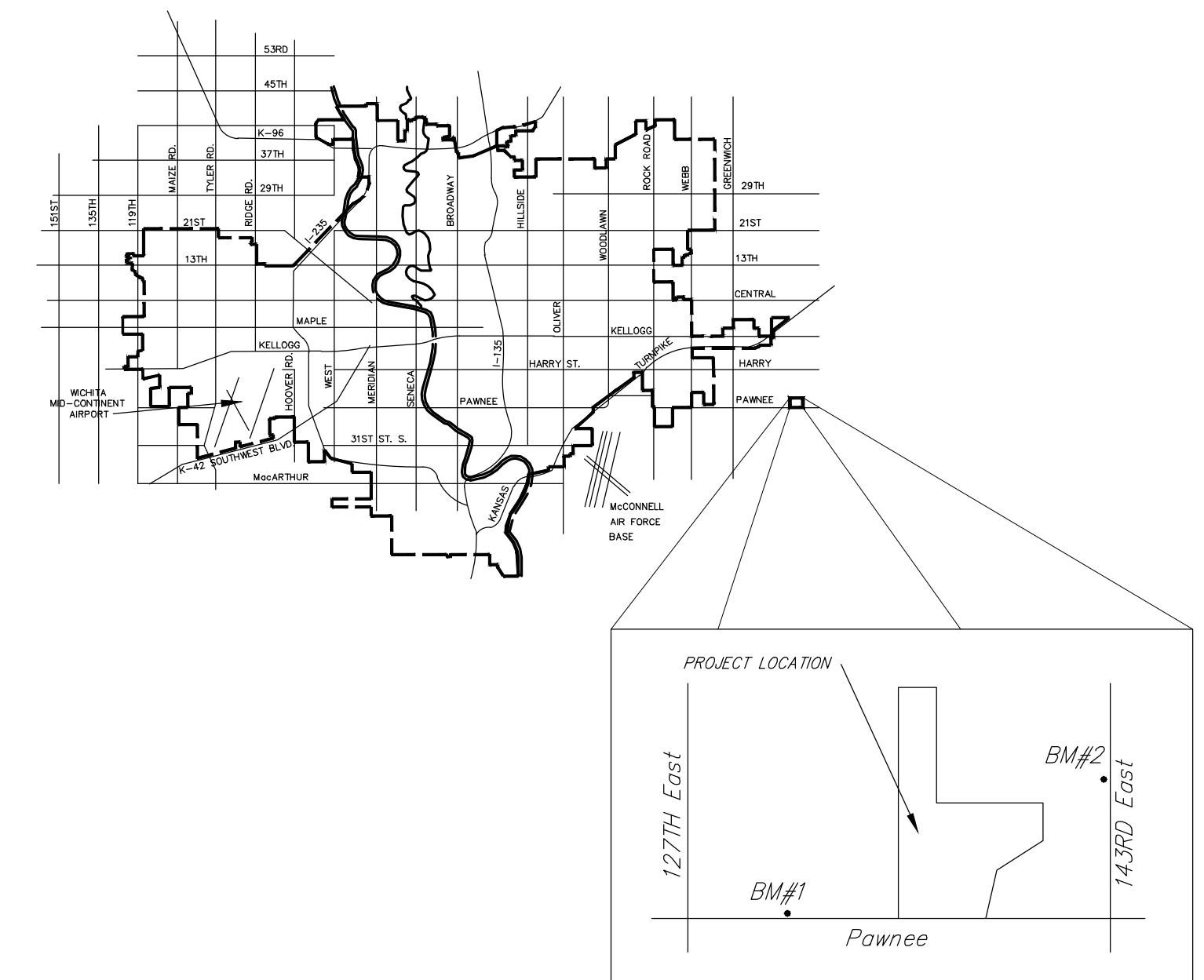
## BENCH MARKS

BENCH MARK #1: SRB BRASS DISC 1008.17' E. & 55.63' N. OF THE CENTERLINE INTERSECTION PAWNEE AVENUE & 127TH STREET EAST ELEVATION = 1336.63 (NGVD29)

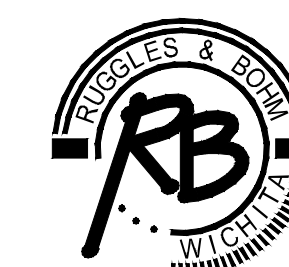
BENCH MARK #2: CHISELED SQUARE ON THE TOP OF A CONCRETE HEADWALL AT THE NORTHWEST CORNER OF A BRIDGE, 981 FEET NORTH AND 13 FEET WEST OF THE SOUTHWEST CORNER OF SECTION 36, T27S, R2E ELEVATION = 1308.29 (NGVD29)

## INDEX OF SHEETS

1. TITLE SHEET
- 2-5. LINE 1 PLAN/PROFILE
- 6-8. LINE 2 PLAN/PROFILE
9. LINE 1A & 2A PLAN/PROFILE
10. LINE 2B & 2C PLAN/PROFILE
11. MANHOLE RING AND COVER DETAILS
12. TYPE 'P' MANHOLE DETAIL
13. COORDINATE MAP
14. FINAL PLAT



## VICINITY MAP



Ruggles & Bohm, P.A.  
 Engineering, Surveying, Land Planning

924 North Main (316) 264-8008  
 Wichita, Kansas 67203 (316) 264-4621 fax  
 www.rbkansas.com E-mail: info@rbkansas.com