

Lateral 440, Four Mile Creek SANITARY SEWER TO SERVE CLEAR CREEK 2ND ADDITION

Lots 29-34, Block 3, Lots 1-6, 25-33, Block 9
468-84923
OCA# 744364

GENERAL NOTES

1. Contractor will be required to provide a minimum advance notice of seventy-two (72) hours to utility companies prior to starting any excavation as follows:

Kansas One-Call 687-2470

The Contractor must notify the following in case of an emergency:

Cox Communications 260-7204
Kansas Gas Service 888-482-4950
Westar 383-8600
AT&T 1-800-286-8313
City of Bel Aire Water Department 744-2888
City of Bel Aire Sewer 744-2888
City of Wichita Water Department 262-6000

2. Underground utility service lines and overhead utility pole lines are to be adjusted as necessary by others prior to construction unless the plans specifically call for their adjustment by the Contractor or unless the plans specifically identify a utility to be adjusted by its owner during construction. Existing utilities and their location, as shown on the plans, represent the best information obtainable for design. Location information has been obtained from the various utility companies and is either from company record drawings or company-provided field locations. The Contractor will be required to work around existing utilities within the right-of-way which do not conflict with proposed construction.

3. Rubble from the removal of miscellaneous structures and excess excavation which is to be wasted shall be disposed of on sites to be provided by the Contractor. These sites shall be approved by the Engineer as to suitability, appearance and site location. Locations that, in the opinion of the Engineer, will leave an unsightly appearance will not be approved.

4. All disposal sites must be approved by the Kansas Department of Health and Environment. Material either stockpiled or disposed of in a flood plain would require a Kansas State Board of Agriculture permit. Any material dumped in waters of the United States or wetlands is subject to U.S. Corps permitting regulations. Any material buried or stockpiled beyond approved of Engineers construction limits would require additional archeological investigations unless buried in a previously approved borrow location.

5. The Contractor shall give all property owners and/or tenants of developed property directly abutting the construction of this project a minimum of ten (10) days advance notice prior to start of construction.

BENCH MARK

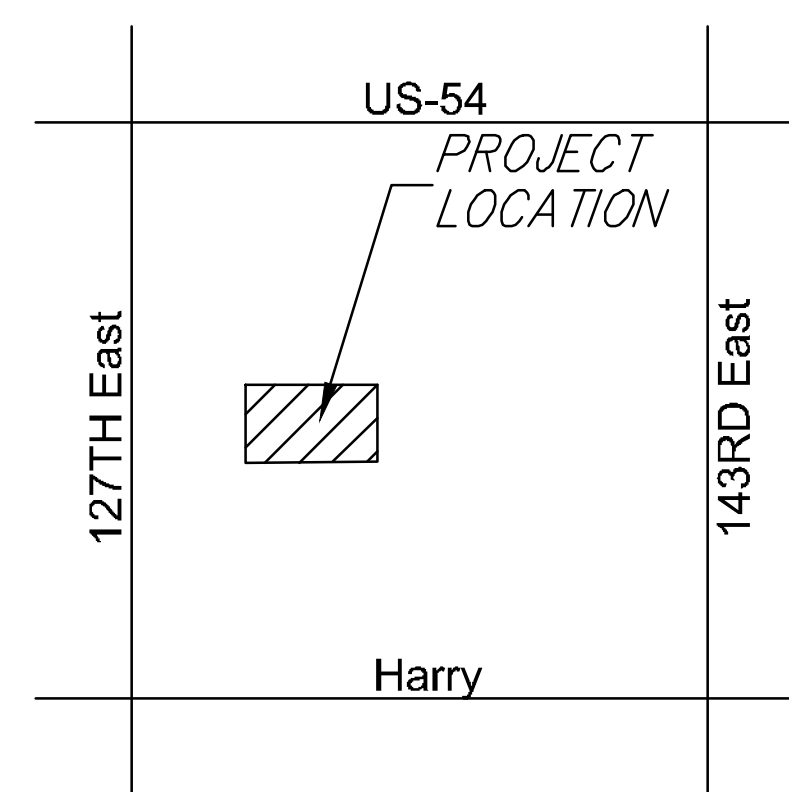
BENCH MARK#1: SQUARE ON SOUTH END HEADWALL 58.5± S. OF NW COR. SEC. 26, T27, R2E. ELEV. 1308.79 (NAVD88)

BENCH MARK#2: RAILROAD SPK. WEST FACE OF POWER POLE 30± WEST OF EAST 1/4 COR. SEC. 26, T27, R2E. ELEV. 1314.88 (NAVD88)

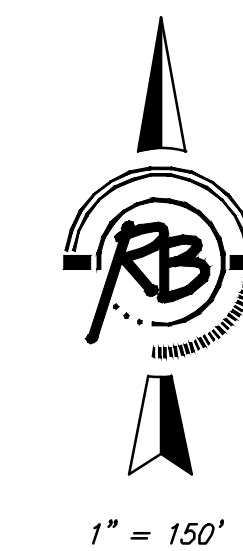
INDEX OF SHEETS

1. TITLE
2. SS LINE 1
3. SS LINE 1
4. SS LINE 2
5. EASEMENT GRADING
6. PRECAST MANHOLE DETAIL
7. MANHOLE FRAME & COVER DETAIL
8. SS RISER DETAILS
9. EROSION CONTROL PLAN
- 10-14. EROSION CONTROL DETAILS
15. ADDITION BUBBLE MAP
16. SS BUBBLE MAP
17. FINAL PLAT

McCullough Excavation - Contractor
J. Wagner - City of Wichita, Field Project Engineer
T. Dvorak - City of Wichita, Inspector
As-built
Stubs & Risers
Release Date: 8/5/2014
pdf: APRosas 11/3/2014



VICINITY MAP

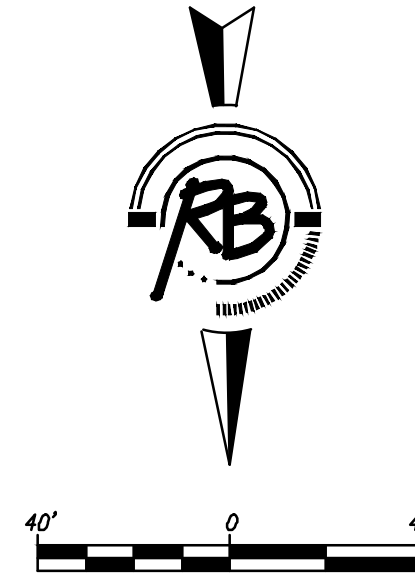
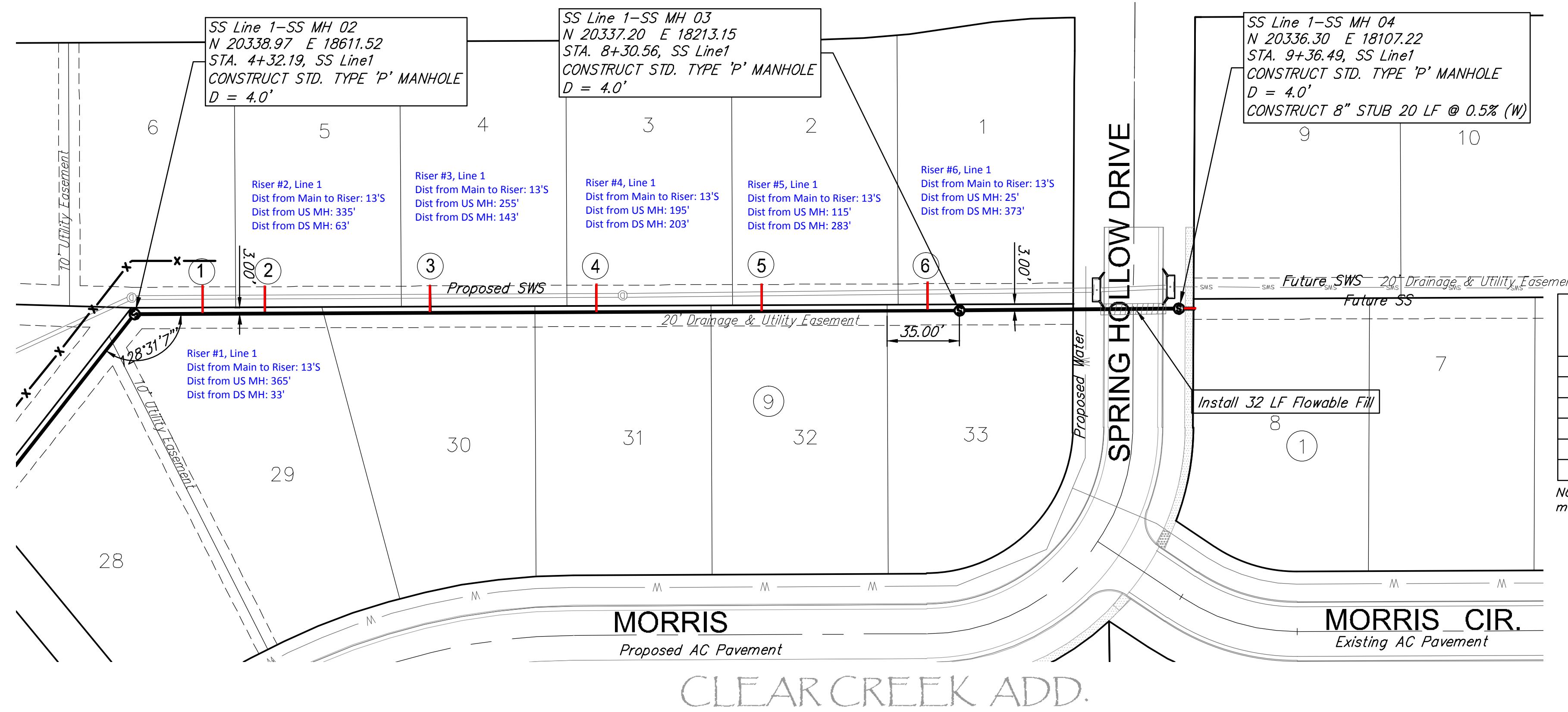


IMPROVEMENT DISTRICT
Gary Janzen P.E., City Engineer
CITY OF WICHITA, KANSAS



ENGINEERING | SURVEYING | LANDSCAPE ARCHITECTURE | GOVERNMENT

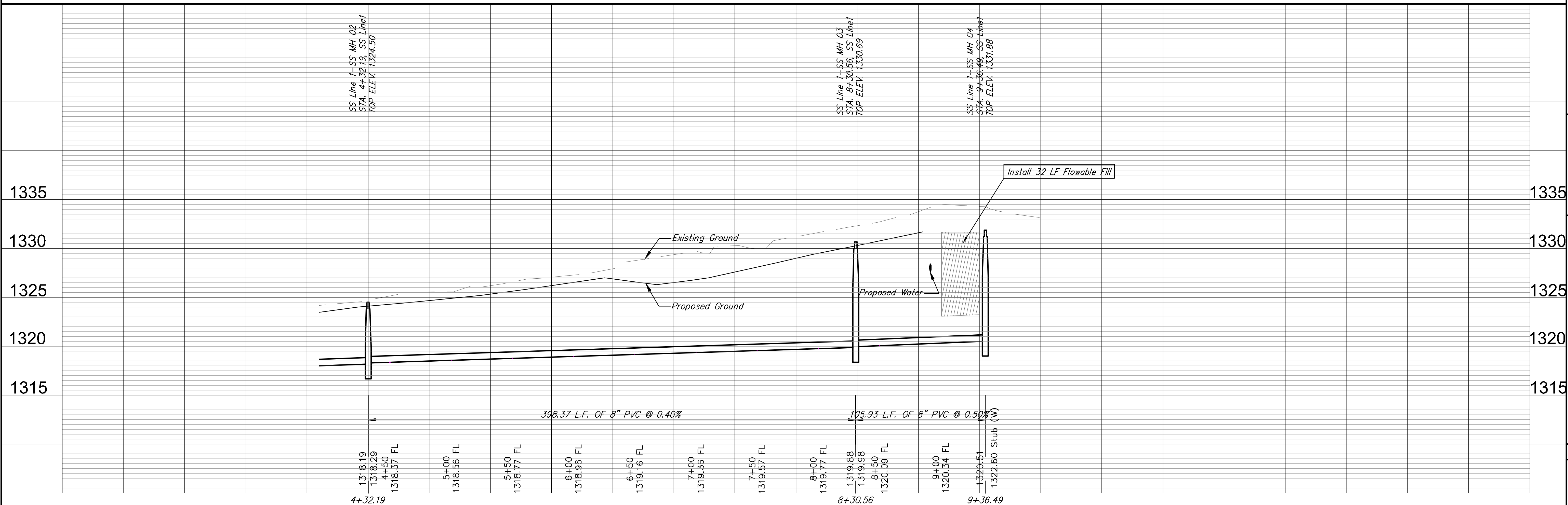
924 NORTH MAIN WICHITA, KANSAS 67203 P (316) 264-8008 F (316) 264-4621
WWW.RBKANSAS.COM



SEWER SERVICE TABLE

NUMBER	TYPE	SERVING			STATION \ DIRECTION	FOR INFORMATION ONLY	
		LOT NO.	BLOCK NO.	LINE NO.		APPROXIMATE LENGTH 4" PIPE	
1	8"x4" Saddle	6	9	1	4+65, S	7'	13'
2	8"x4" Saddle	5	9	1	4+95, S	7'	13'
3	8"x4" Saddle	4	9	1	5+75, S	7'	13'
4	8"x4" Saddle	3	9	1	6+35, S	7'	13'
5	8"x4" Saddle	2	9	1	7+15, S	8'	13'
6	8"x4" Saddle	1	9	1	8+05, S	9'	13'

NOTE: Vertical Riser Pipe shall be extended to 2' minimum above ground water elevation and 4' maximum below proposed ground elevation.



RUGGLES & BOHM
ENGINEERS ARCHITECTS LANDSCAPE ARCHITECTS CONSULTANTS
1501 W. 17TH AVENUE, SUITE 100, WICHITA, KS 67202
TEL: 316.261.1111 FAX: 316.261.1112

PROJECT NUMBER: Engg Base [SS] Line 1-1

DESIGN E.O.G. UTILITY

DRAWN: NSK

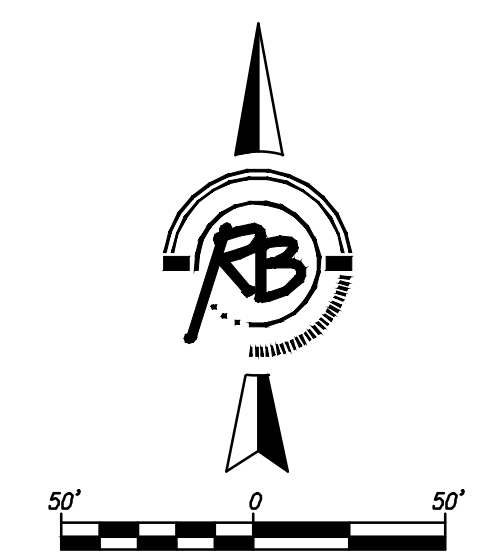
REVIEW: NSK

DATE: Feb. 24, 2014

REVISION: REVIEW

**CLEAR CREEK 2ND ADDITION
SS LINE 1
WICHITA, KANSAS**

RS JOB 4161E
SHEET 3 OF 17



Point Table

Point #	Northing	Easting	Description
2230	20677.63	18880.01	EXIST SS MH
2231	20454.30	18702.49	SS MH
2232	20338.97	18611.52	SS MH
2233	20337.20	18213.42	SS MH
2234	20336.30	18107.22	SS MH
2235	20837.23	18570.54	EXIST SS MH
2236	20678.59	18490.60	SS MH
2237	20650.92	18426.13	SS MH
2238	20649.50	18106.05	SS MH

CLEAR CREEK 2ND ADD.

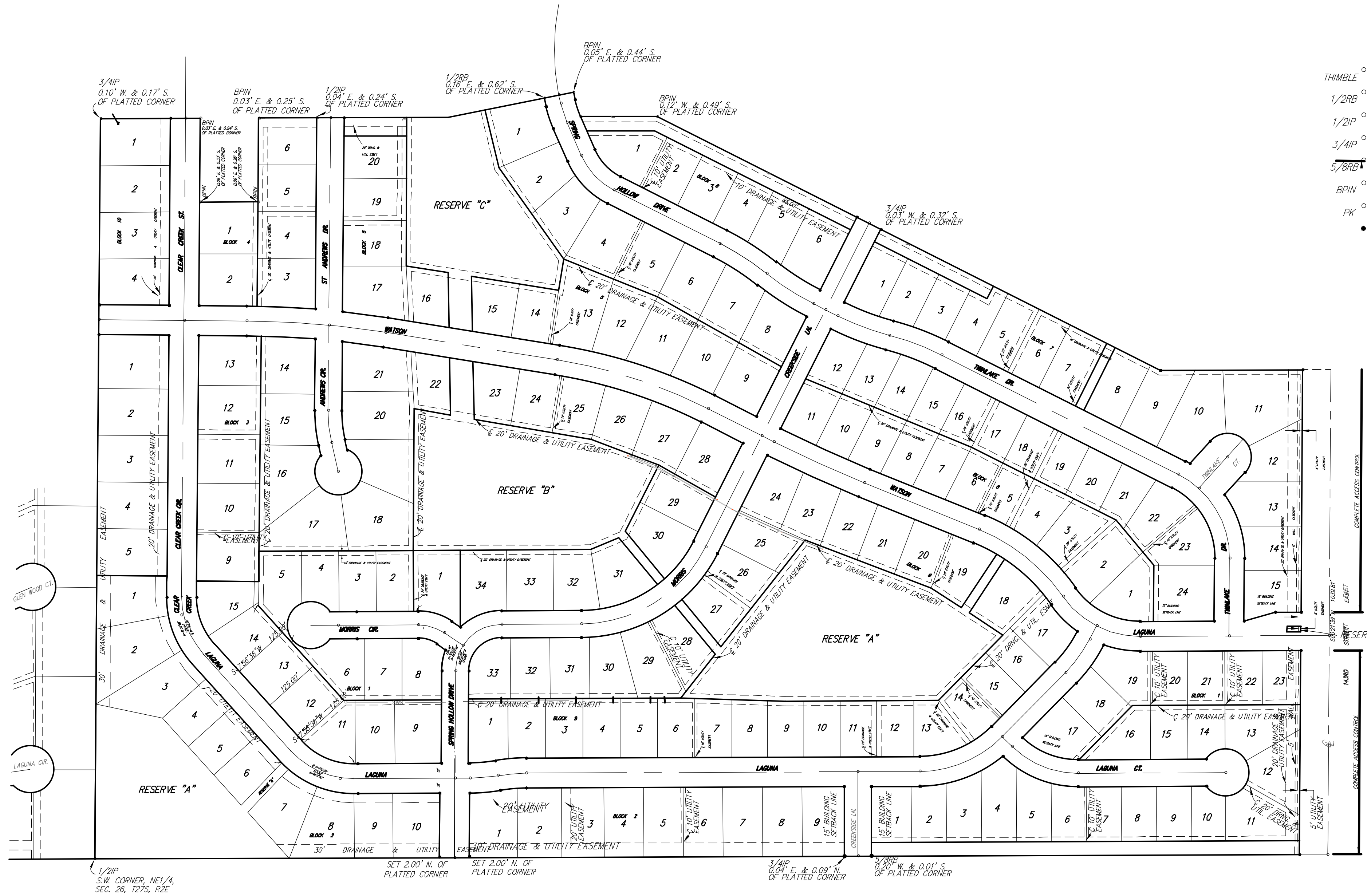
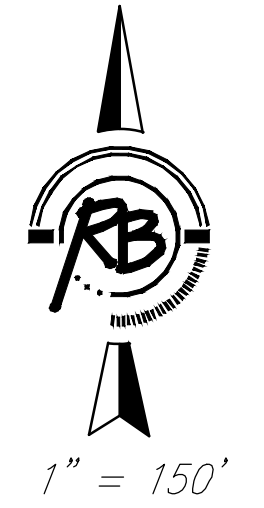
**CLEAR CREEK PHASE 3
SS BUBBLE MAP
WICHITA, KANSAS**

			DATE	Feb. 25, 2014
	ENGINEERING SURVEYING LANDSCAPE ARCHITECTURE GOVERNMENT		DESIGN	
	824 NORTH MAIN WICHITA, KANSAS 67201 P (316) 264-8028 F (316) 264-4621 WWW.RBKANSAS.COM		DRAWN	NSK
	PROJECT NUMBER: --- RB JOB NO.: --- DWG. SCALE: ---		REVIEW	---
DRAWING FILE: Engg Base (SS Bubble Map)			SHEET	16
			OF	17

(c) Copyright 2013, Ruggles & Bohm, P.A.

CLEAR CREEK ADDITION

Wichita, Sedgwick County, Kansas



- SURVEY MARKER LEGEND**
- THIMBLE \circ = 5/8" REBAR IN THIMBLE (FOUND)
 - 1/2RB \circ = 1/2" REBAR (FOUND)
 - 1/2IP \circ = 1/2" IRON PIPE (FOUND)
 - 3/4IP \circ = 3/4" IRON PIPE (FOUND)
 - 5/8RB \circ = 5/8" REBAR (FOUND)
 - BPIN \circ = 5/8" REBAR W/BAUGHMEN CAP (FOUND)
 - PK \circ = PK NAIL W/MKEC WASHER (FOUND)
 - = 5/8" REBAR W/R&B CAP (SET)

- SURVEY MARKER LEGEND**
- THIMBLE \circ = 5/8" REBAR IN THIMBLE (FOUND)
 - 1/2RB \circ = 1/2" REBAR (FOUND)
 - 1/2IP \circ = 1/2" IRON PIPE (FOUND)
 - 3/4IP \circ = 3/4" IRON PIPE (FOUND)
 - 5/8RB \circ = 5/8" REBAR (FOUND)
 - BPIN \circ = 5/8" REBAR W/BAUGHMEN CAP (FOUND)
 - PK \circ = PK NAIL W/MKEC WASHER (FOUND)
 - = 5/8" REBAR W/R&B CAP (SET)

