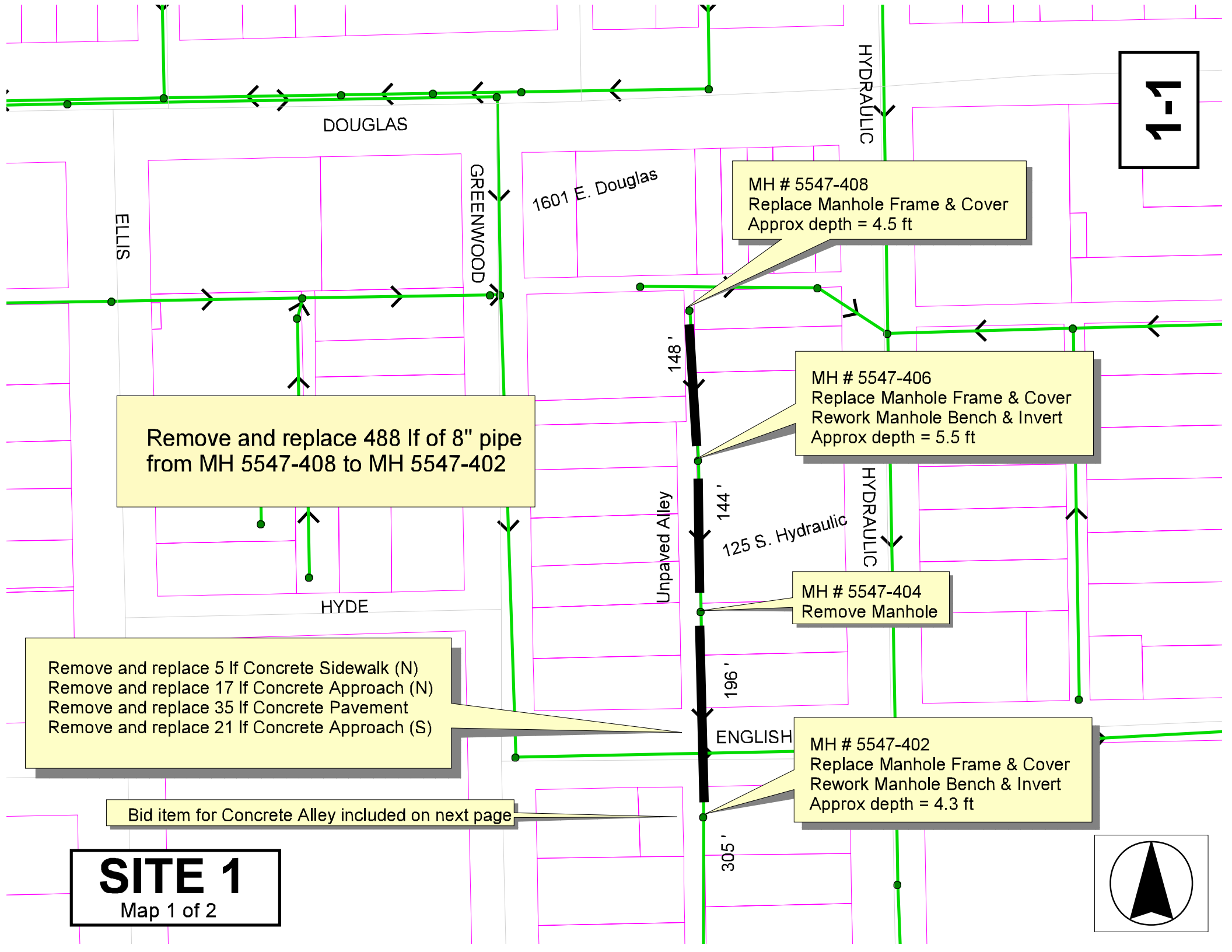


1-1



Remove and replace 488 lf of 8" pipe
from MH 5547-408 to MH 5547-402

Remove and replace 5 lf Concrete Sidewalk (N)
Remove and replace 17 lf Concrete Approach (N)
Remove and replace 35 lf Concrete Pavement
Remove and replace 21 lf Concrete Approach (S)

Bid item for Concrete Alley included on next page

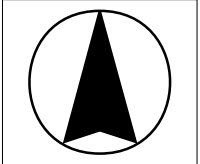
MH # 5547-408
Replace Manhole Frame & Cover
Approx depth = 4.5 ft

MH # 5547-406
Replace Manhole Frame & Cover
Rework Manhole Bench & Invert
Approx depth = 5.5 ft

MH # 5547-404
Remove Manhole

MH # 5547-402
Replace Manhole Frame & Cover
Rework Manhole Bench & Invert
Approx depth = 4.3 ft

SITE 1
Map 1 of 2



1-2

ENGLISH
ELLIS

MH # 5547-402
Approx depth = 4.3 ft

Remove and replace 116 lf of Concrete Alley

Remove and replace 554 lf of 8" pipe
from MH 5547-402 to MH 5547-375

HYDE

GREENWOOD

ENGLISH

201 S.
Hydraulic

HYDRAULIC

305'

MH # 5547-399
Replace Manhole Frame & Cover
Rework Manhole Bench & Invert
Approx depth = 4.9 ft

MH # 5547-375
Replace Manhole Frame & Cover
Rework Manhole Bench & Invert
Construct an Outside Drop on the line
Approx Manhole depth = 7.6 ft
(pipe is shallow, depth not measured)

Unpaved Alley

249'

Remove and replace
50 lf of Asphalt Alley
Remove and replace
18 lf of Concrete Approach
Remove and replace
24 lf of Concrete Pavement

1602 E.
Waterman

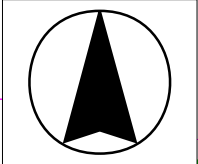
WATERMAN

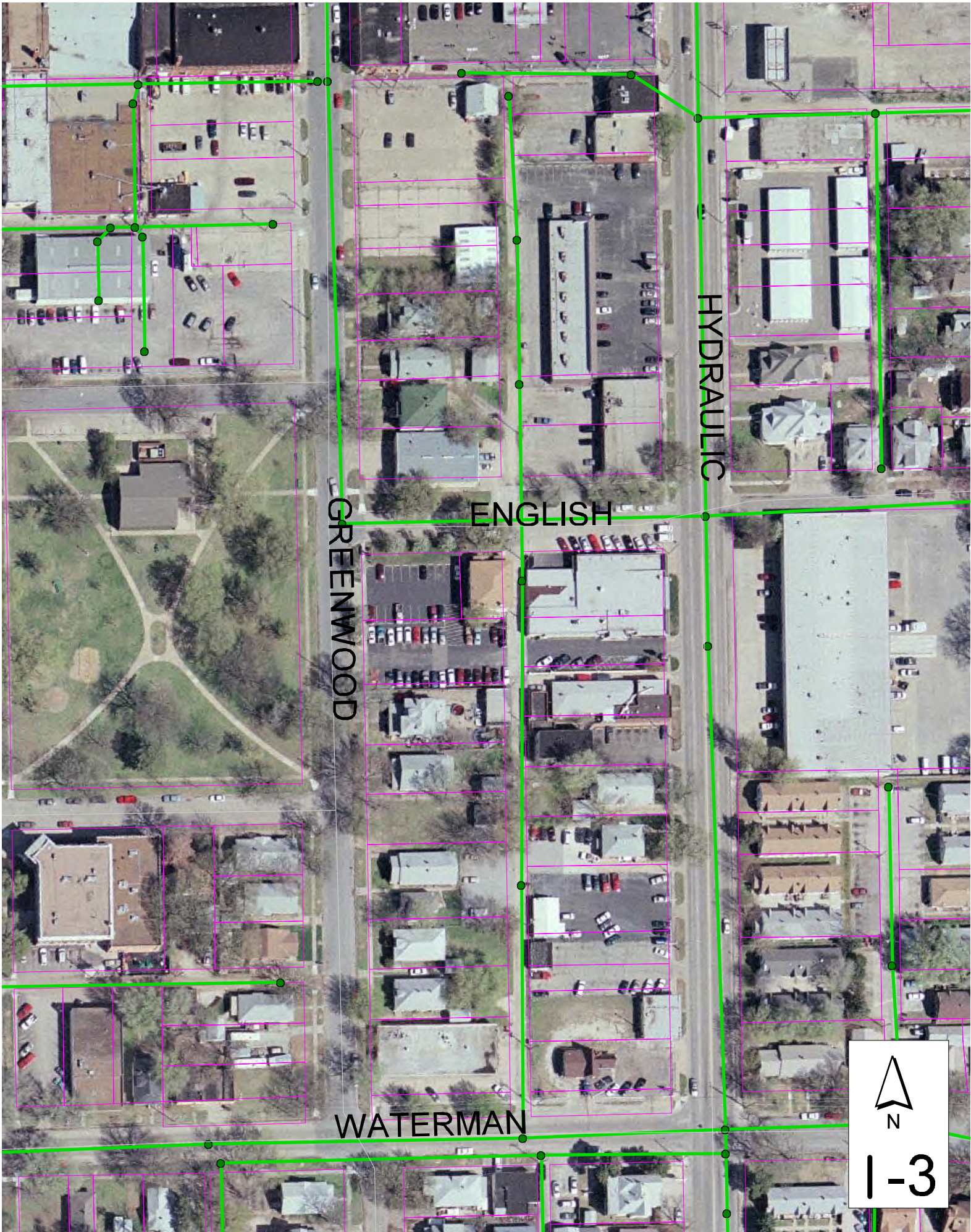
320'

186'

Flowable Fill will be required

SITE 1
Map 2 of 2





GREENWOOD

ENGLISH

HYDRAULIC

WATERMAN



1-3