

# BENCHMARKS

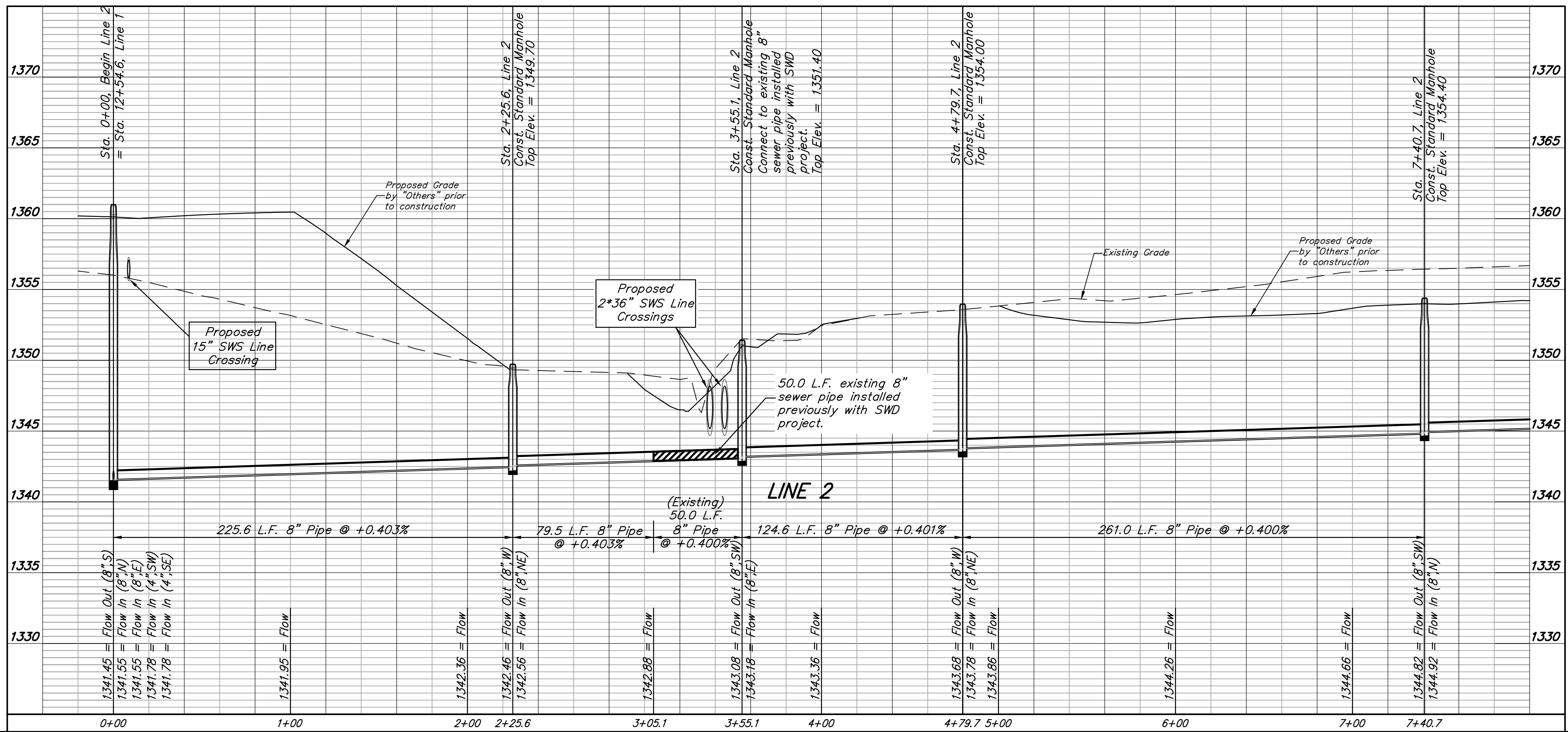
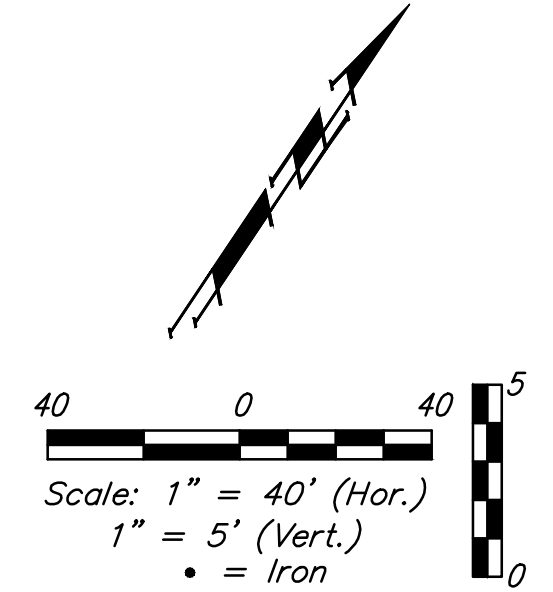
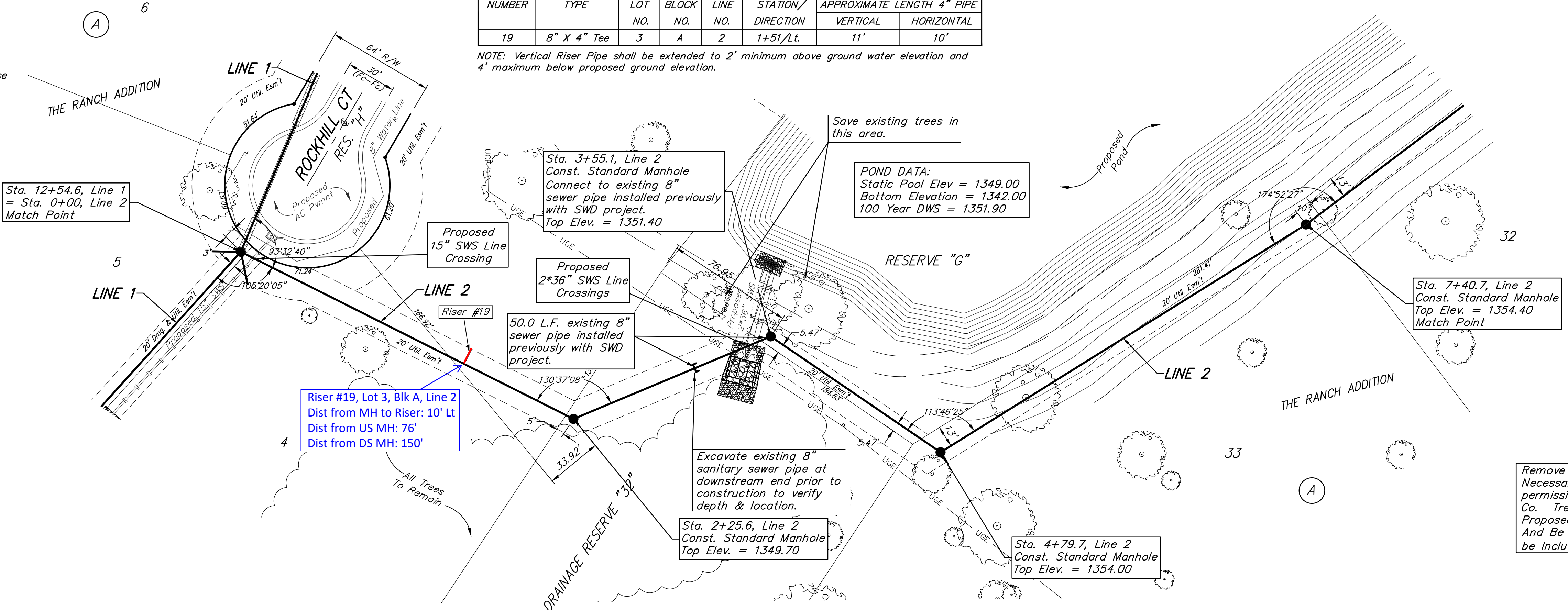
"X" Cut top of 18" RCP 1' east of west end of RCP 31' south and 35' east of SE corner of the NE1/4 of Section 12, TWP. 27-S, R-2-E. Elev. = 1361.23 NAVD88

"□" Cut on concrete slab north base of entry gate 123' west of east section line and 190' south of the north property line. Elev. = 1368.38 NAVD88

# SEWER SERVICE TABLE

NUMBER	TYPE	LOCATION			FOR INFORMATION ONLY	
		LOT NO.	BLOCK NO.	LINE NO.	STATION/DIRECTION	APPROXIMATE LENGTH 4" PIPE
19	8" X 4" Tee	3	A	2	1+51/Lt.	VERTICAL: 11' HORIZONTAL: 10'

NOTE: Vertical Riser Pipe shall be extended to 2' minimum above ground water elevation and 4' maximum below proposed ground elevation.



Remove Existing Trees Only as **ABSOLUTELY** Necessary For Construction and with the permission of the Developer or Baughman Co. Trees Not In Direct Conflict With Proposed New Construction Shall Remain And Be Protected From Damage. Cost to be Included in Bid Item "Site Clearing"



**Baughman**

The Ranch Addition - Phase I

## LINE 2

Sanitary Sewer Improvements

---

PROJECT NUMBER: 468-84919

REVISIONS:

DESIGN: AEG  
DRAWN: JAK  
DATE: 05/14

SCALE: Noted  
SHEET: 5 OF 17