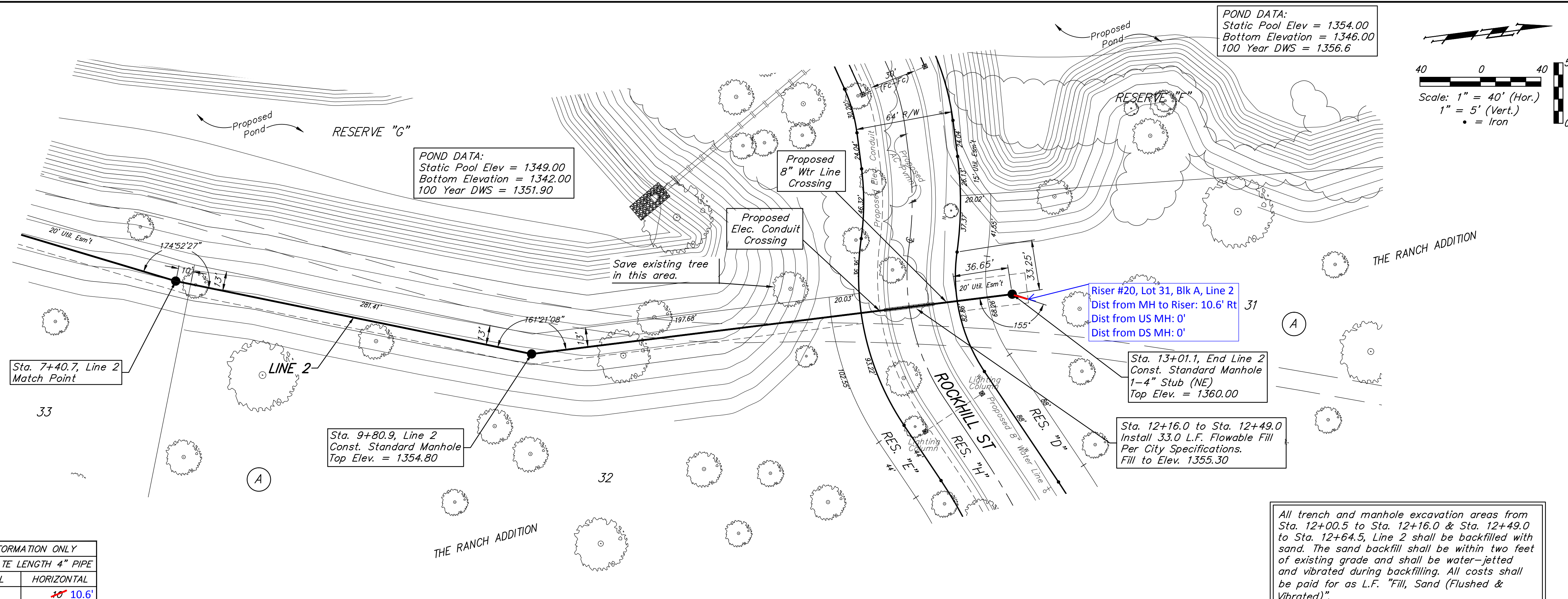


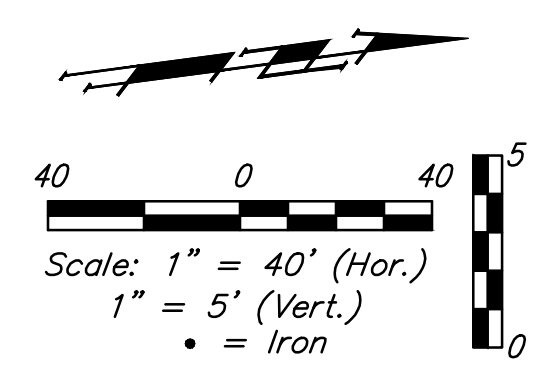
BENCHMARKS

"X" Cut top of 18" RCP 1' east of west end of RCP 31' south and 35' east of SE corner of the NE1/4 of Section 12, TWP. 27-S, R-2-E. Elev. = 1361.23 NAVD88

"□" Cut on concrete slab north base of entry gate 123' west of east section line and 190' south of the north property line. Elev. = 1368.38 NAVD88



POND DATA:
Static Pool Elev = 1354.00
Bottom Elevation = 1346.00
100 Year DWS = 1356.6



POND DATA:
Static Pool Elev = 1349.00
Bottom Elevation = 1342.00
100 Year DWS = 1351.90

Riser #20, Lot 31, Blk A, Line 2
Dist from MH to Riser: 10.6' Rt
Dist from US MH: 0'
Dist from DS MH: 0'

Sta. 13+01.1, End Line 2
Const. Standard Manhole
1-4" Stub (NE)
Top Elev. = 1360.00

Sta. 12+16.0 to Sta. 12+49.0
Install 33.0 L.F. Flowable Fill
Per City Specifications.
Fill to Elev. 1355.30

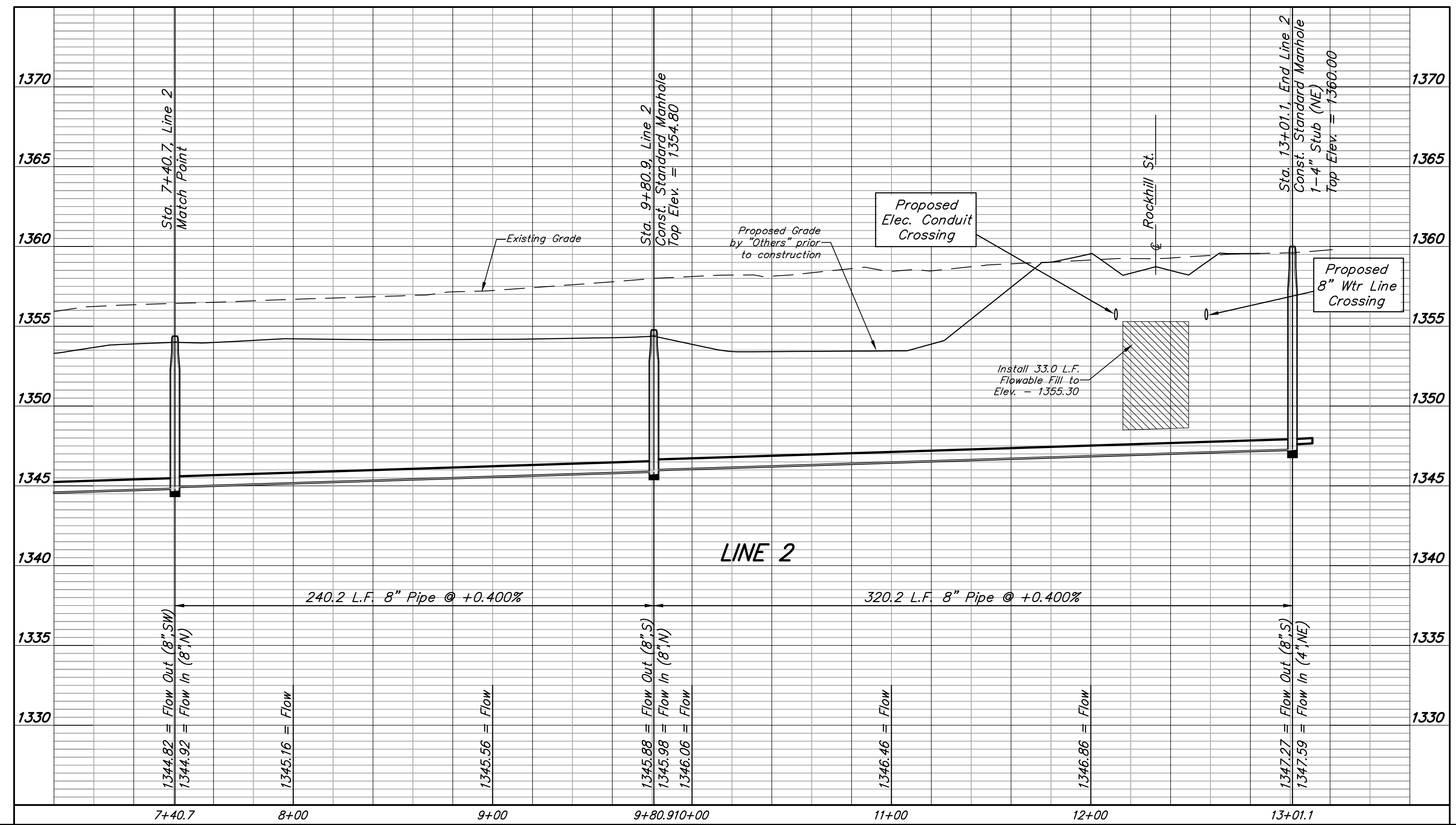
SEWER SERVICE TABLE

NUMBER	TYPE	LOCATION			STATION/ DIRECTION	FOR INFORMATION ONLY	
		LOT NO.	BLOCK NO.	LINE NO.		APPROXIMATE LENGTH 4" PIPE	VERTICAL
20	4" Stub	31	A	2	13+01.1/Rt.	9'	10.6'

NOTE: Vertical Riser Pipe shall be extended to 2' minimum above ground water elevation and 4' maximum below proposed ground elevation.

All trench and manhole excavation areas from Sta. 12+00.5 to Sta. 12+16.0 & Sta. 12+49.0 to Sta. 12+64.5, Line 2 shall be backfilled with sand. The sand backfill shall be within two feet of existing grade and shall be water-jetted and vibrated during backfilling. All costs shall be paid for as L.F. "Fill, Sand (Flushed & Vibrated)".

Remove Existing Trees Only as **ABSOLUTELY** Necessary For Construction and with the permission of the Developer or Baughman Co. Trees Not In Direct Conflict With Proposed New Construction Shall Remain And Be Protected From Damage. Cost to be Included in Bid Item "Site Clearing"



	The Ranch Addition - Phase I	
	LINE 2 Sanitary Sewer Improvements	
Baughman Company, P.A. 315 Ellis St., Wichita, KS 67211 P 316-263-2771 F 316-262-0149 ENGINEERING SURVEYING PLANNING LANDSCAPE ARCHITECTURE		
PROJECT NUMBER 468-84919	DESIGN AEG	DRAWN JAK
REVISIONS:	APPROVED DATE 05/14	SCALE Noted SHEET
6 OF 17		