

BENCHMARK
 City of Wichita Benchmark.
 Centerline of Curtis extended.
 2' South of south property line
 of 1-235 R/W. 21' West of
 pole line extended south. 74'
 North Northwest of street light
 pole. 68' West of chain link
 fence corner.
 Elev. = 129.15 (City Datum)
 Elev. = 1316.55 (N.G.V.D.29)

Site Benchmark
 "□" North side 13th Street
 North, centerline face of inlet
 between Doris and Doris Ct.
 Elev. = 131.13

NOTE:
 Plans show sporadic areas of concrete, asphalt
 pavement and gravel on site. When installing the
 proposed sanitary sewer, the Contractor shall
 remove these items and store them on site.
 Only place that any on these material shall be
 replaced are along the the house and the bar, if
 there is damage. Removal and any replacement
 of concrete, asphalt pavement and gravel due to
 the construction of the sanitary sewer system
 shall be incidental to the bid item "Site Clearing
 and Restoration".

SEWER SERVICE TABLE

NUMBER	TYPE	LOCATION			STATION\ DIRECTION	FOR INFORMATION ONLY	
		LOT NO.	BLOCK NO.	LINE NO.		APPROXIMATE LENGTH 4" PIPE	VERTICAL
1	4" Stub out of MH	1	A	1	0+70.5/R/L	As Needed	67'
2	8" x 4" Tee Saddle	2	A	1	1+43/R/L	As Needed	58'

Note: Riser and Lateral pipe being installed are for the existing house and bar. The riser and lateral pipe shall be installed and hooked up to Line 1 ONLY after it has been tested and/or approved by the Engineer.

Sta 0+00, Begin Line 1
 Core into existing manhole and extend
 pipe Northwest. Seal & grout around pipe.
 Plug existing pipe West after new line has
 been installed and all services have been
 hooked up to the new line. Reshape
 invert if necessary. Cost of coring,
 sealing, grouting, plugging & reshaping to
 be incidental to cost of pipe.

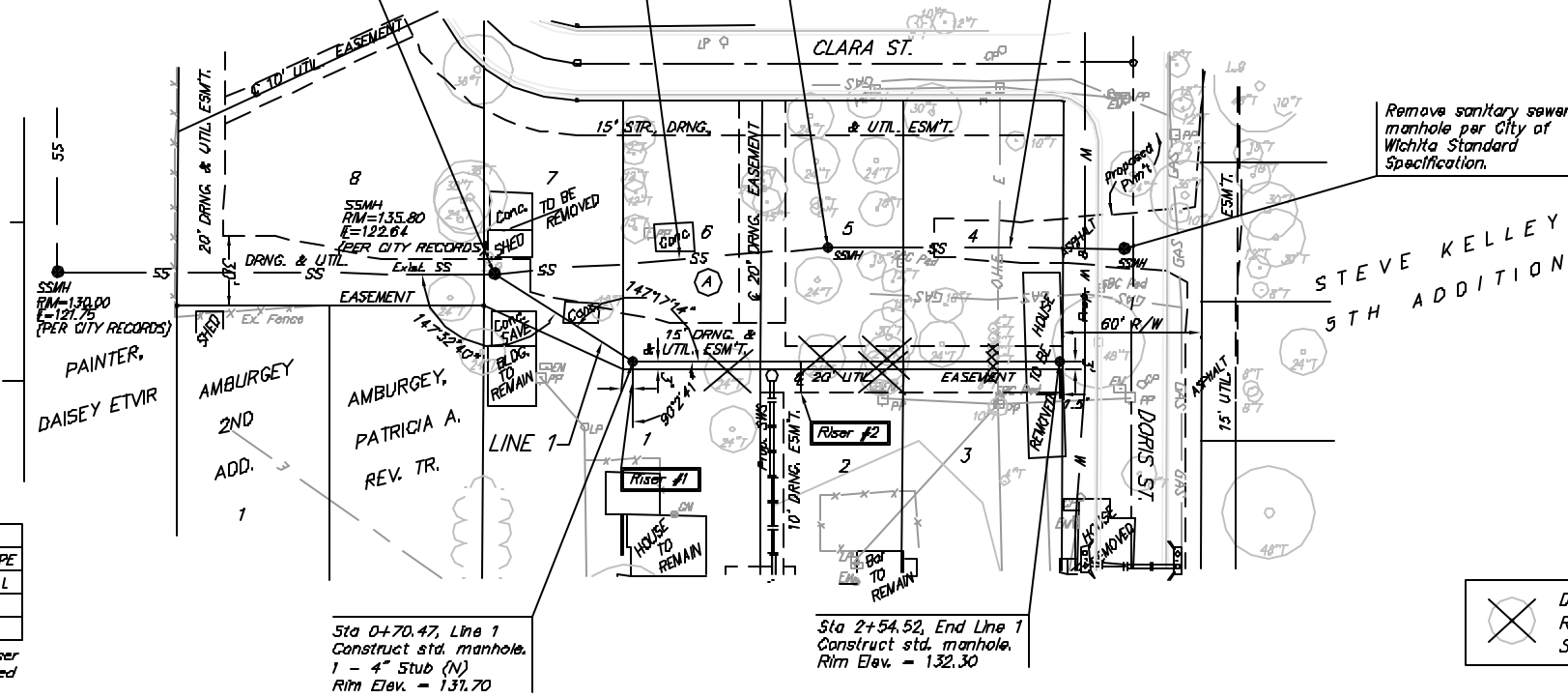
Remove sanitary sewer
 manhole per City of
 Wichita Standard
 Specification.

Abandon 145 L.F.
 sanitary sewer pipe
 in place.

Abandon 128 L.F.
 sanitary sewer pipe
 in place.

NOTE:
 Plans show trees that were existing at time of
 design. Developer has been removing trees on
 site. Therefore, the Contractor shall visit site
 and make own determination of tree removal
 needs. Some trees have been topped, but their
 trunks and roots are still in the ground.
 Removal of trees due to the construction of the
 sanitary sewer system shall be incidental to the
 bid item "Site Clearing and Restoration".

Scale: 1" = 40' Horizontal
 1" = 5' Vertical
 Δ = Iron



NOTE:
 The following is a summary of the conditions of
 the existing utilities that are on the entire site.

Electrical: Almost all electrical is overhead and
 still active. Power is still being supplied to the
 Bar and the house east of the Bar. According
 to developer, all drops on the power poles have
 been disconnected and therefore any service lines
 should be moveable.

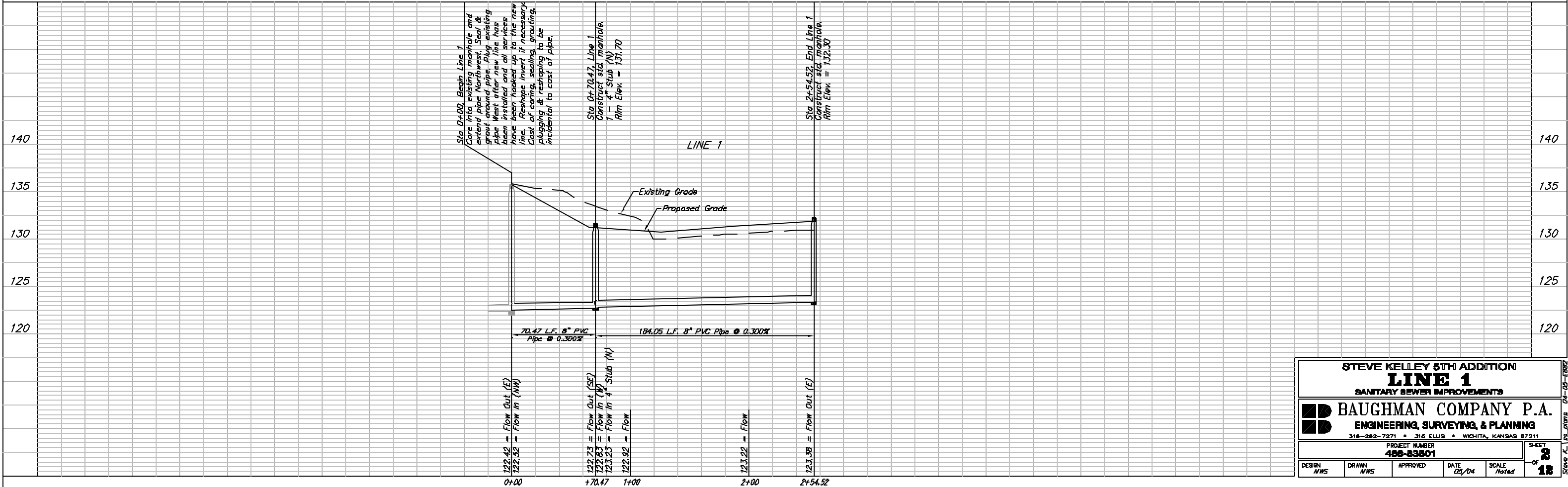
Gas: The gas has been disconnected at the
 main. All the interior service lines therefore
 should be abandoned. When excavating through
 a service line, some gas may escape due to
 being trapped in a bend.

Water: The water has been turned off, but not
 for sure if it has been disconnected from the
 main. Caution should be used when passing
 next to or through a water service line. Check
 with Engineer at time of construction to see if
 water has been disconnected.

SWR: At this time, no word on the status of
 the phone lines. Contractor to call Engineer.

Sanitary Sewer: There are two laterals that will
 need to be reconnected to Line 1 after it has
 been installed. These laterals are for the Bar
 and the house east of the Bar.

The above information is from the Developer. If
 the Contractor has any questions, please call the
 Design Engineer and we will help out.



STEVE KELLEY 5TH ADDITION
LINE 1
 SANITARY SEWER IMPROVEMENTS

BAUGHMAN COMPANY P.A.
 ENGINEERING, SURVEYING, & PLANNING
 316-282-7271 • 316 ELLIS • WICHITA, KANSAS 67211

PROJECT NUMBER: **488-83801**

DESIGN: NWS DRAWN: NWS APPROVED: DATE: 05/04 SCALE: Noted

SHEET: **2** OF **18**