

**BENCHMARK**  
 City of Wichita Benchmark.  
 Centerline of Curtis extended.  
 2" South of south property line  
 of I-235 R/W. 21" West of  
 pole line extended south. 74"  
 North Northwest of street light  
 pole. 68" West of chain link  
 fence corner.  
 Elev. = 129.15 (City Datum)  
 Elev. = 1316.55 (N.G.V.D.29)

**Site Benchmark**  
 North side 13th Street  
 North, centerline face of inlet  
 between Daris and Daris Ct.  
 Elev. = 131.13

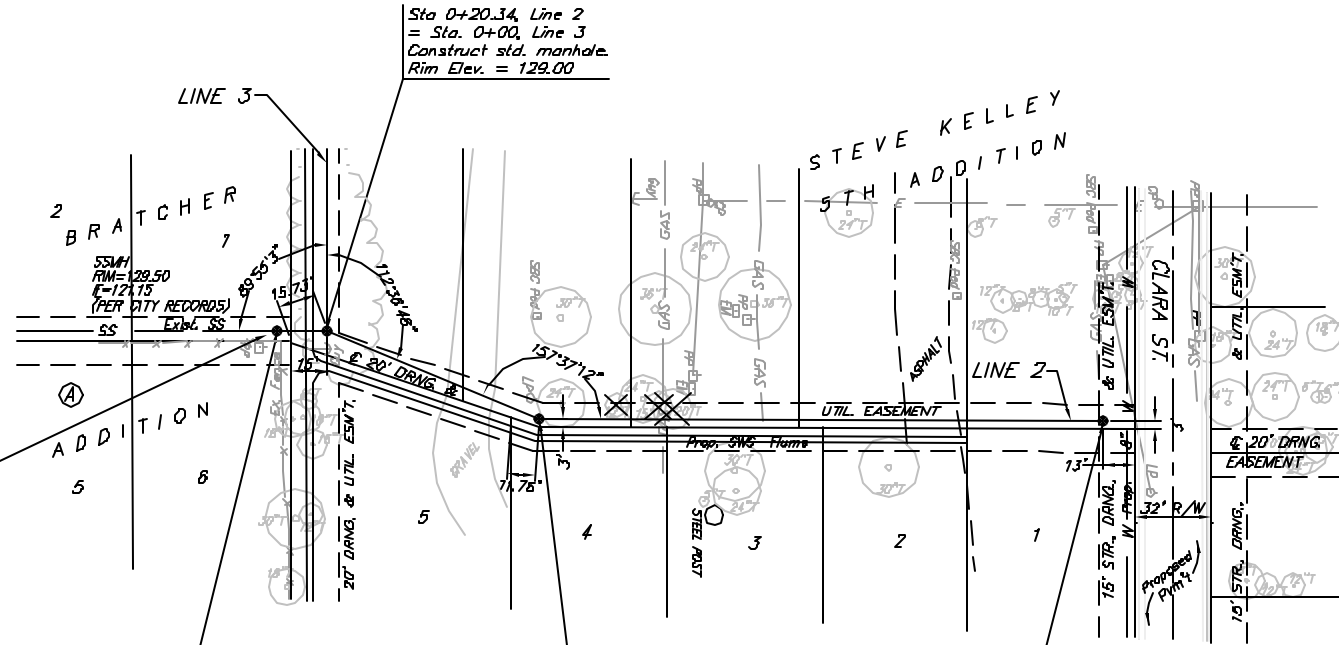
Regrade around existing  
 manhole. Grade undeveloped  
 ground at a 4:1 slope away  
 from top of manhole and  
 match developed areas best  
 as possible. Cost of  
 regrading is incidental to  
 cost of "Easement Grading".

Sta 0+00, Begin Line 2  
 Core into existing manhole  
 and extend pipe North.  
 Seal & grout around pipe.  
 Reshape invert if necessary.  
 Cost of coring, sealing,  
 grouting & reshaping to be  
 incidental to cost of pipe.

Sta 1+16.46, Line 2  
 Construct std. manhole.  
 Rim Elev. = 129.30

Sta 3+51.72, End Line 2  
 Construct std. manhole.  
 Rim Elev. = 132.50

Sta 0+20.34, Line 2  
 = Sta. 0+00, Line 3  
 Construct std. manhole.  
 Rim Elev. = 129.00



**NOTE:**  
 Plans show sporadic areas of concrete, asphalt  
 pavement and gravel on site. When installing the  
 proposed sanitary sewer, the Contractor shall  
 remove these items and store them on site.  
 Only place that any of these material shall be  
 replaced are along the the house and the bar, if  
 there is damage. Removal and any replacement  
 of concrete, asphalt pavement and gravel due to  
 the construction of the sanitary sewer system  
 shall be incidental to the bid item "Site Clearing  
 and Restoration".

**NOTE:**  
 Plans show trees that were existing at time of  
 design. Developer has been removing trees on  
 site. Therefore, the Contractor shall visit site  
 and make own determination of tree removal  
 needs. Some trees have been topped, but their  
 trunks and roots are still in the ground.  
 Removal of trees due to the construction of the  
 sanitary sewer system shall be incidental to the  
 bid item "Site Clearing and Restoration".

Scale: 1" = 40' Horizontal  
 1" = 5' Vertical  
 \* = Iron

**NOTE:**  
 The following is a summary of the conditions of  
 the existing utilities that are on the entire site.

**Electrical:** Almost all electrical is overhead and  
 still active. Power is still being supplied to the  
 Bar and the house east of the Bar. According  
 to developer, all drops on the power poles have  
 been disconnected and therefore any service lines  
 should be moveable.

**Gas:** The gas has been disconnected at the  
 main. All the interior service lines therefore  
 should be abandoned. When excavating through  
 a service line, some gas may escape due to  
 being trapped in a bend.

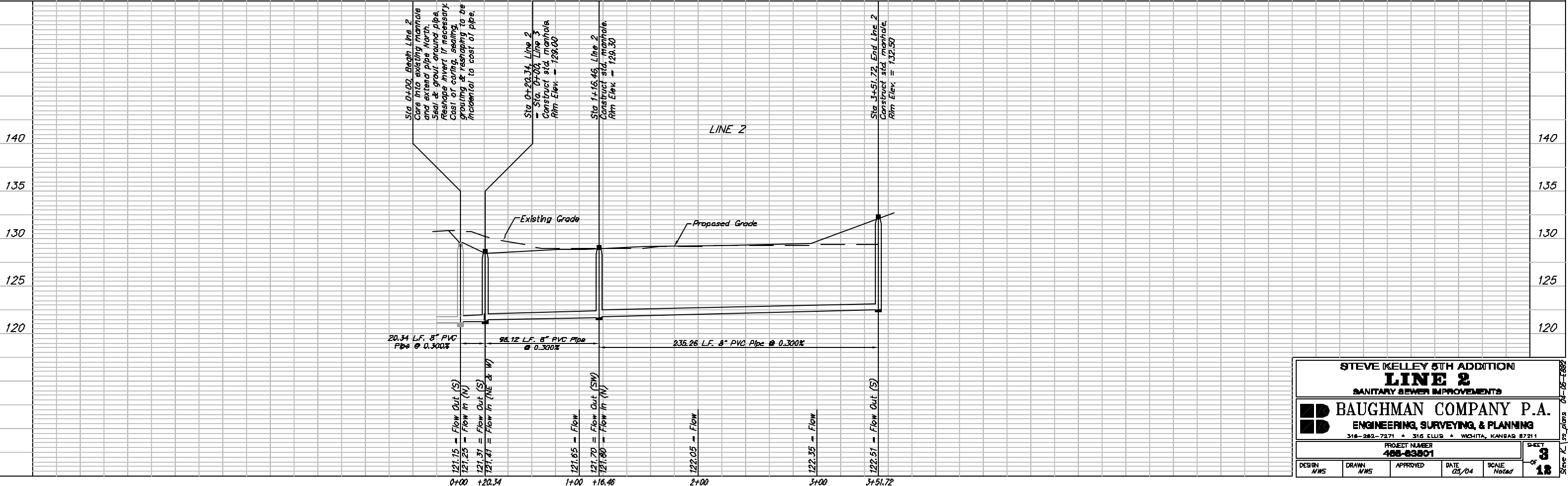
**Water:** The water has been turned off, but not  
 for sure if it has been disconnected from the  
 main. Caution should be used when passing  
 next to or through a water service line. Check  
 with Engineer at time of construction to see if  
 water has been disconnected.

**SWR:** At this time, no word on the status of  
 the phone lines. Contractor to call Engineer.

**Sanitary Sewer:** There are two laterals that will  
 need to be reconnected to Line 1 after it has  
 been installed. These laterals are for the Bar  
 and the house east of the Bar.

The above information is from the Developer. If  
 the Contractor has any questions, please call the  
 Design Engineer and we will help out.

Denotes Trees to be  
 Removed by the  
 Sanitary Sewer Contractor



<b>STEVE KELLEY 5TH ADDITION</b>				
<b>LINE 2</b>				
SANITARY SEWER IMPROVEMENTS				
<b>BAUGHMAN COMPANY P.A.</b>				
ENGINEERING, SURVEYING, & PLANNING				
316-282-7271 • 316 ELLIS • WICHITA, KANSAS 67211				
PROJECT NUMBER <b>485-83801</b>				SHEET <b>3</b>
DESIGN NWS	DRAWN NWS	APPROVED	DATE 03/04	SCALE Noted
				OF <b>18</b>