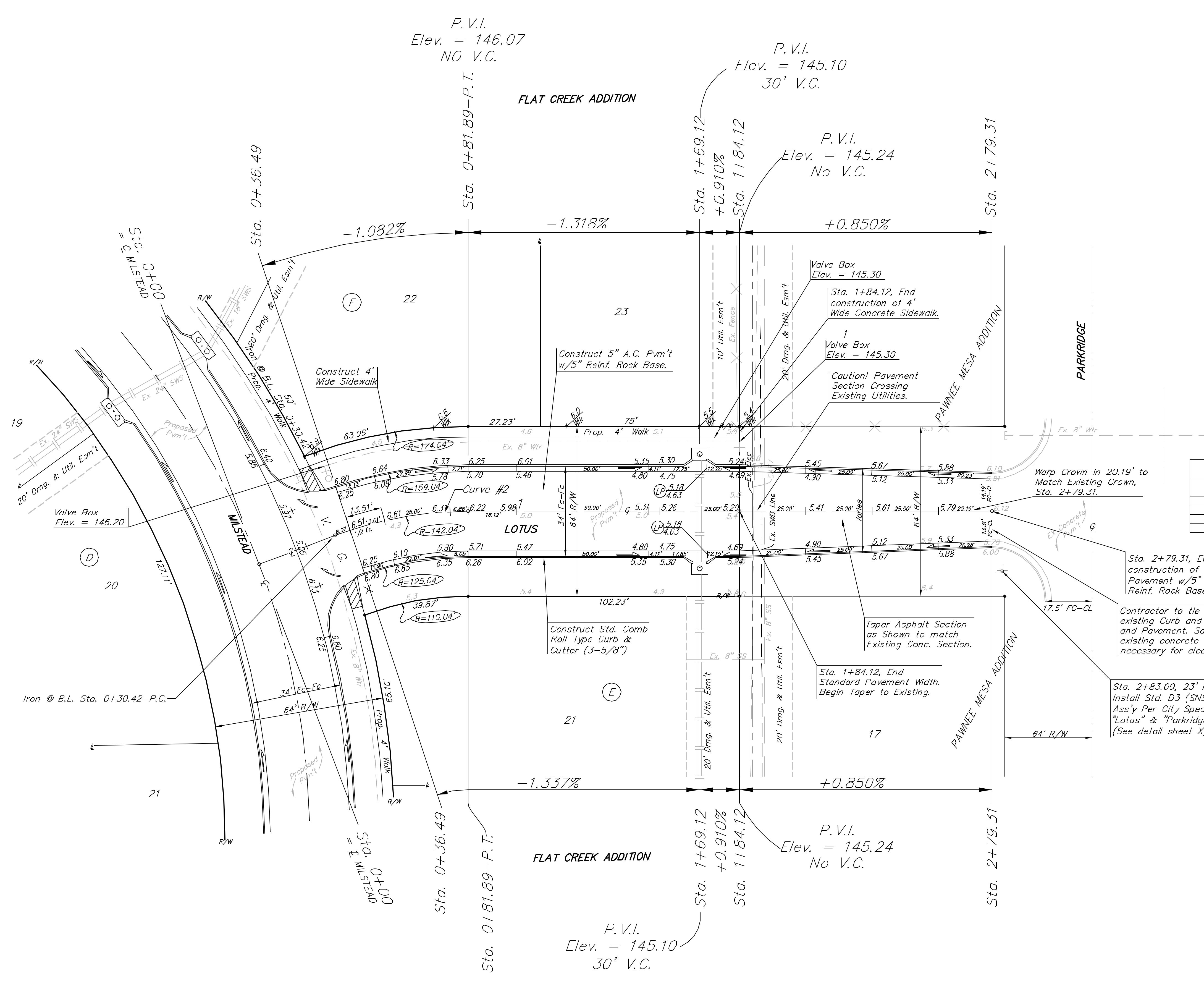


**BENCHMARKS:**  
 BM #1: "□" Cut in top of curb, east return of SE corner of Lotus & Parkridge.  
 Elev. = 145.99 (City Datum)  
 BM #2: C.O.W. Disc Adjacent to Fire Hydrant in S.E. Curb Return of Grant & Milstead.  
 Elev. = 146.09 (City Datum)  
 BM #3: "X" Cut in Top of Curb at South End of Golden Hills Ct. Cul-de-Sac.  
 Elev. = 147.73 (City Datum)

Scale: 1" = 20' Horizontal  
 1" = 5' Vertical  
 • = Iron



Curve #2  
 Curve Data Based on Centerline  
 Rad. = 142.04' Delta = 18° 18' 39" Tangent = 22.89'  
 Arc = 45.39' L.C. = 45.20' Def./FT. = 12.10234 Min.

Station	Arc	FACE CHORD LENGTHS		Defl.	T. Defl.
		8' Lt.	8' Rt.		
0+36.49	-	-	-	0'00"00"	0'00"00"
0+50.00	13.51'	15.88'	11.13'	2'43"30"	2'43"30"
0+75.00	25.00'	29.36'	20.57'	5'02"34"	7'46"04"
0+81.88	6.88'	8.09'	5.67'	12'31"6"	9'09"20"

NOTE: ROLL TYPE CURB & GUTTER TO BE CONSTRUCTED ON THE PAVEMENT SHOWN ON THIS SHEET. TOP OF CURB ELEVATIONS ARE GIVEN FOR FULL HEIGHT CURB.

**FLAT CREEK ADDITION - PHASE III**  
**LOTUS**  
 STA 0+00 TO STA 1+84.12

**BAUGHMAN COMPANY P.A.**  
 ENGINEERING, SURVEYING, & PLANNING  
 316-262-7271 • 315 ELLIS • WICHITA, KANSAS 67211

PROJECT NUMBER  
**472-83385**

DESIGN: NBW    DRAWN: KDP/GNX    APPROVED:    DATE: 10/03    SCALE: NOTED

SHEET **10** OF **44**

102-06-1336