

FHWA REGION NO.	STATE	PROJECT NO.	FISCAL YEAR	SHEET NO.	TOTAL SHEETS
7	KANSAS	87 TE-0353-01	2014	4	84

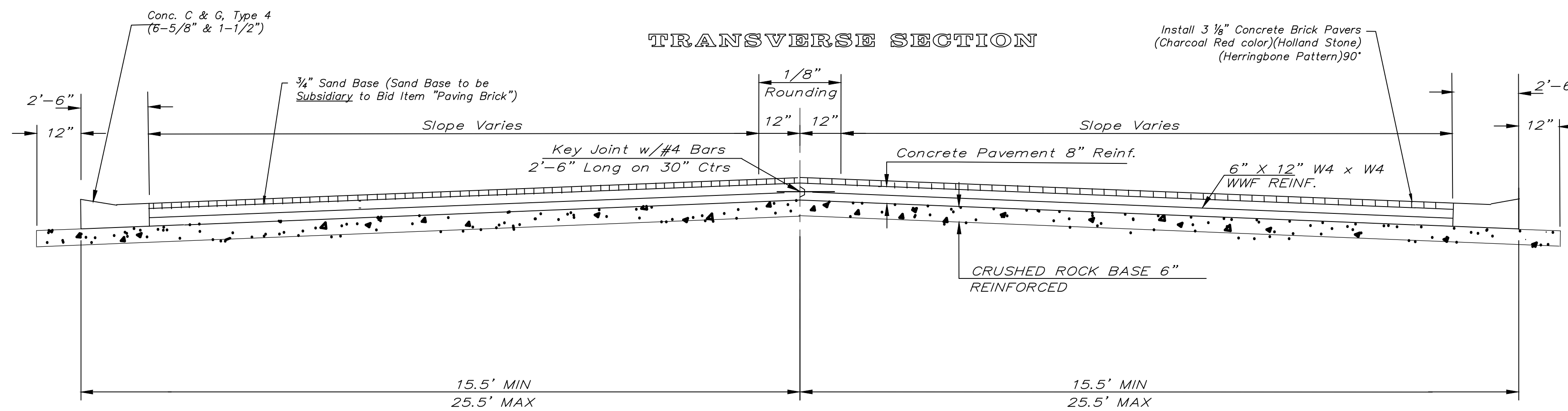
**General Notes**

FABRIC BASE REINFORCEMENT SHALL BE B X 1100 BY TENSAR CORPORATION OR LBO201 BY TENAX CORPORATION OR APPROVED EQUAL. FABRIC BASE REINFORCEMENT SHALL BE INSTALLED IN ACCORDANCE WITH MANUFACTURER'S RECOMMENDATIONS.

ROCK BASE IS TO BE COMPACTED AND SMOOTHED WITH A STEEL FACED ROLLER PRIOR TO PLACEMENT OF ASPHALT. TACK COAT WILL NOT BE APPLIED TO ROCK BASE.

THE CONCRETE PAVEMENT FROM HIGH EDGE TO HIGH EDGE SHALL BE PAID FOR AS SQUARE YARDS OF CONCRETE PAVEMENT 8" REINF. CURB & GUTTER SHALL BE PAID FOR AS LIN FT CONC C & G, TYPE 4 (6-5/8" & 1-1/2"). CRUSHED ROCK BASE FROM 1' BEYOND BACK OF CURB SHALL BE PAID FOR AS SQUARE YARDS OF CRUSHED ROCK BASE 6" (REINFORCED).

TRANSVERSE JOINT SPACING SHALL NOT EXCEED 12'

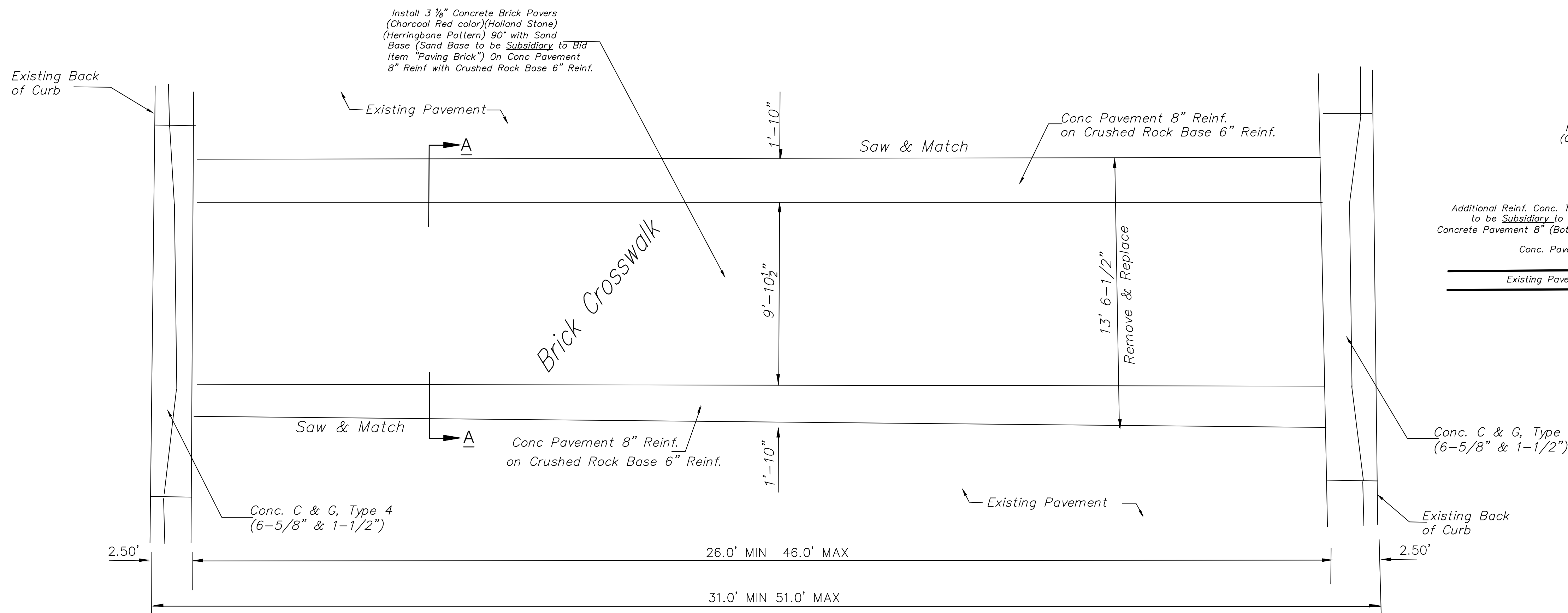


PAVING SECTION AT BRICK CROSSWALK

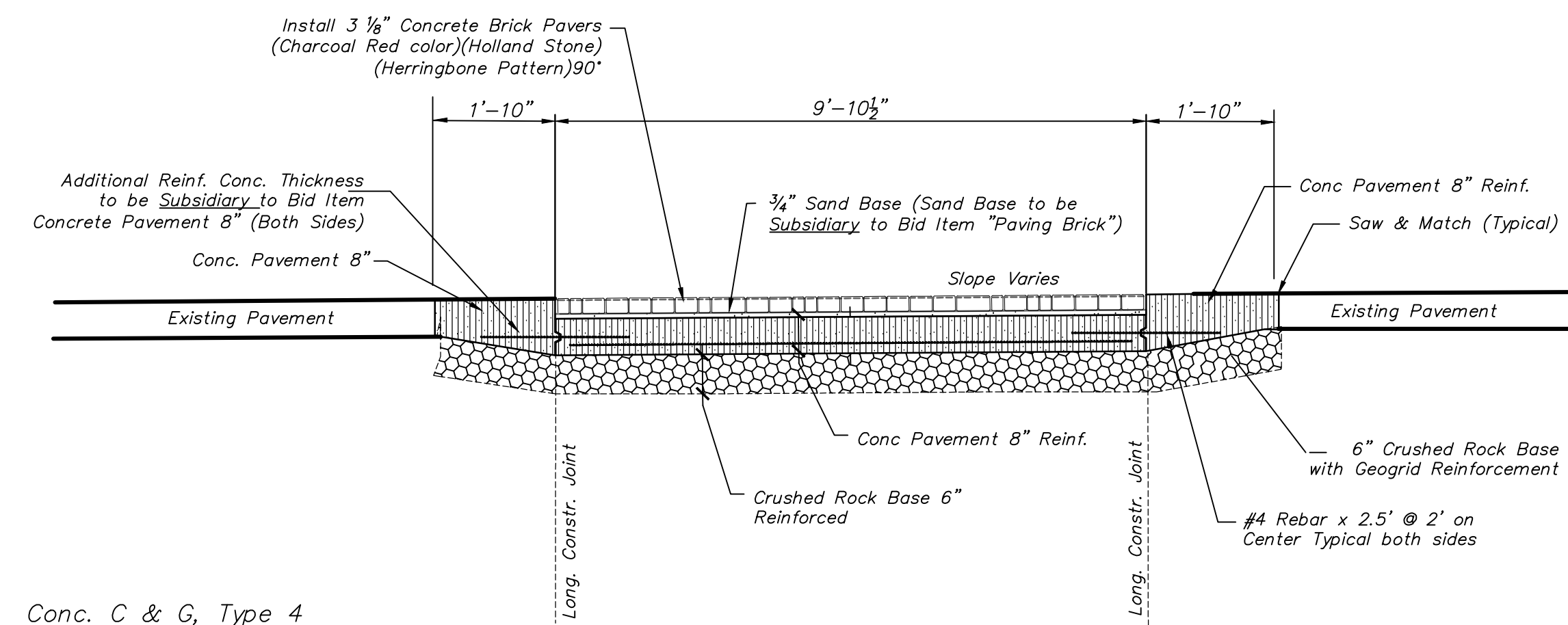
**CRUSHED ROCK GRADATION REQUIREMENTS**  
PERCENT OF AGGREGATE RETAINED

2-1/2"	0
3/4"	20 - 60
#4	50 - 80
#40	80 - 94
#200	90 - 98

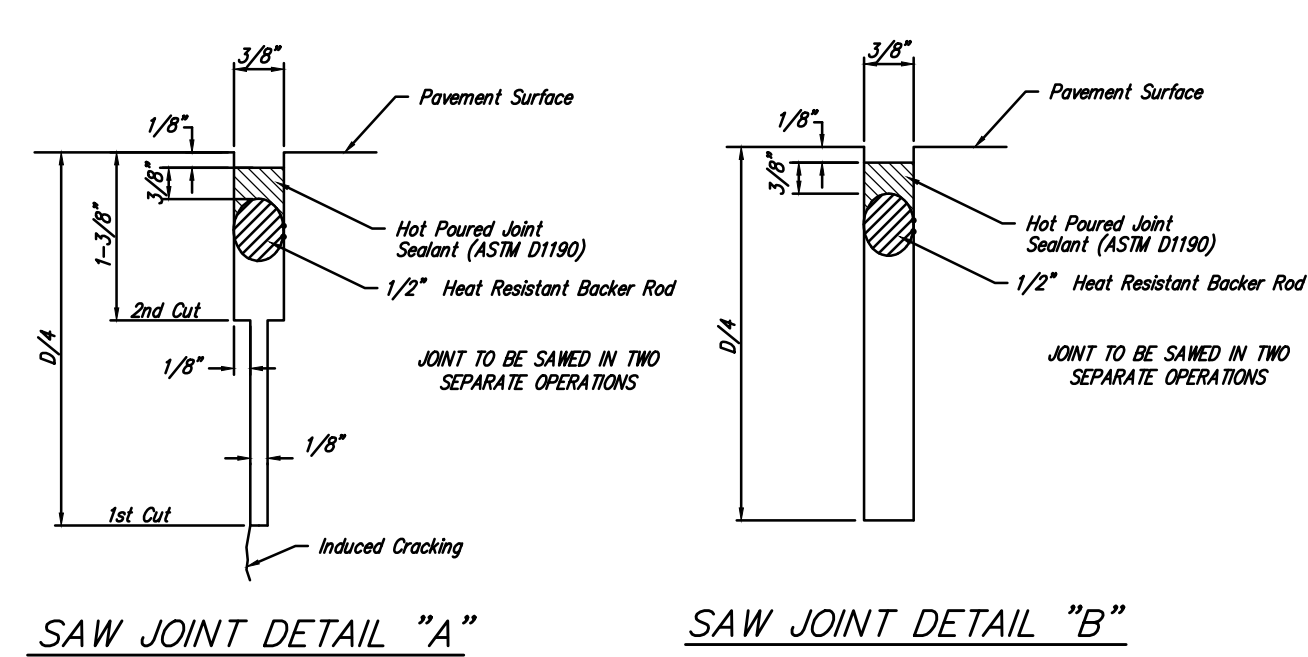
ROCK QUALITY SHALL CONFORM TO THE REQUIREMENTS SPECIFIED BY THE KDOT 1990 EDITION STANDARD SPECIFICATION SUBSECTION 1102 FOR DURABILITY CLASS I.



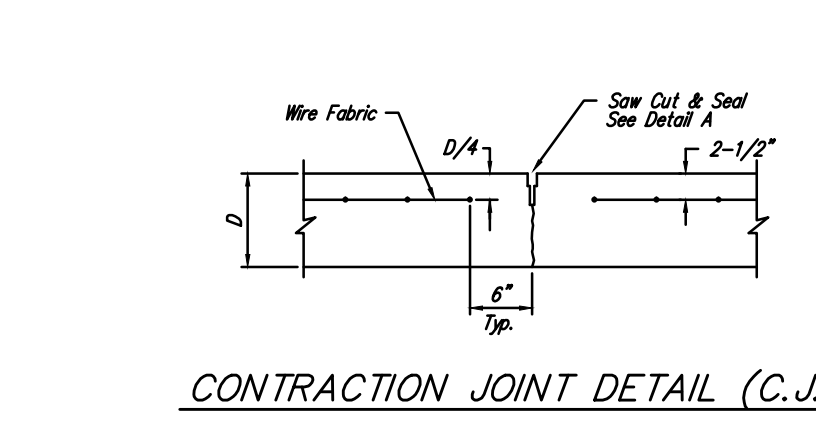
PAVING BRICK CROSSWALK PLAN



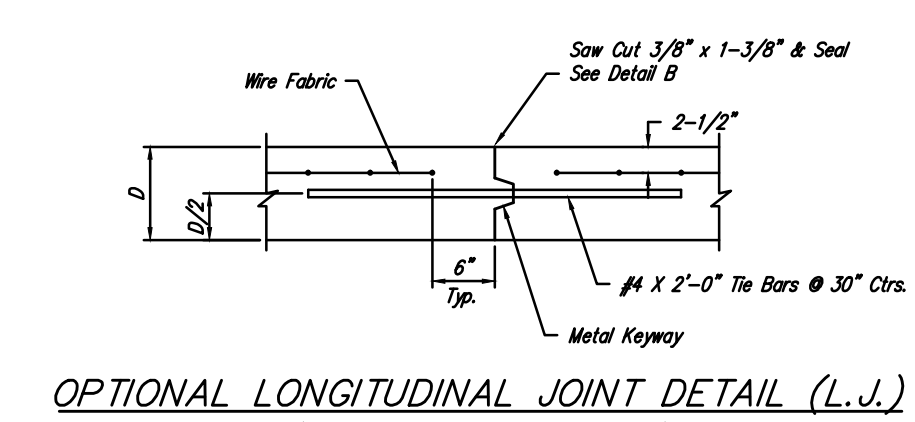
PAVING BRICK CROSSWALK CROSS SECTION A - A



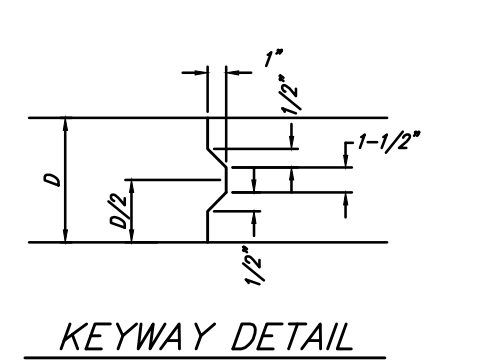
SAW JOINT DETAIL "A" SAW JOINT DETAIL "B"



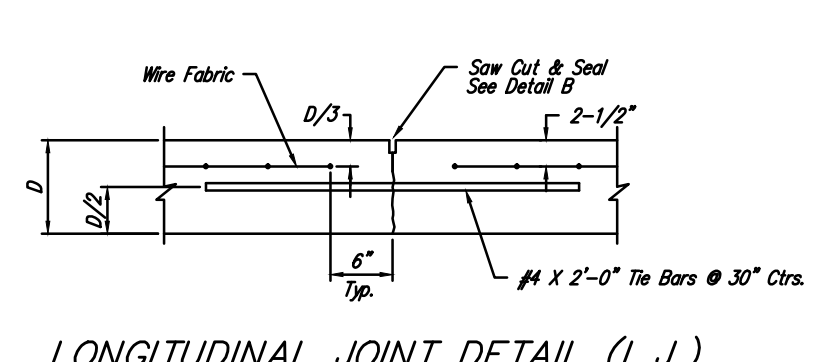
CONTRACTION JOINT DETAIL (C.J.)



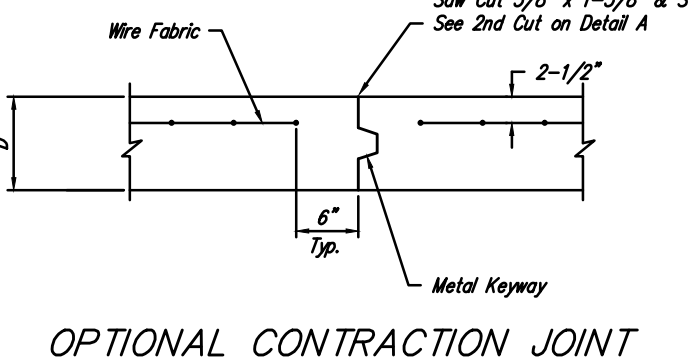
OPTIONAL LONGITUDINAL JOINT DETAIL (L.J.) (CONSTRUCTION JOINT)



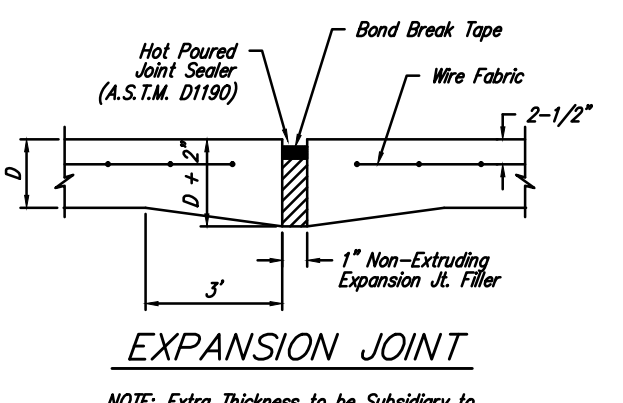
KEYWAY DETAIL



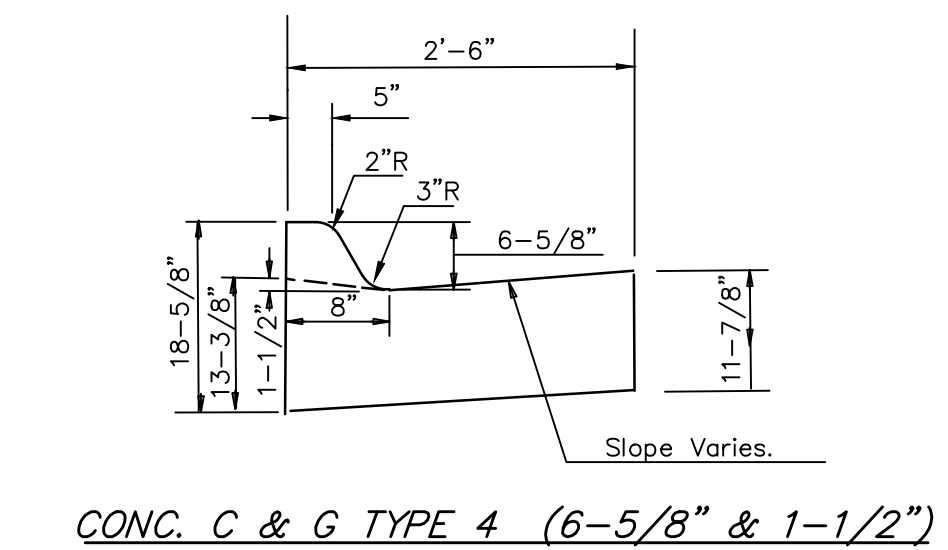
LONGITUDINAL JOINT DETAIL (L.J.)



OPTIONAL CONTRACTION JOINT (CONSTRUCTION JOINT)



EXPANSION JOINT



CONC. C & G TYPE 4 (6-5/8" & 1-1/2")

Drawing File: E:\Projects\Redbud Bike Path\Details\Street Section & Details.dwg  
 Design: KK  
 Drawn: JM  
 Approved: JFB  
 Scale: NOTED

Project No. 11-07-E650 CAPITAL IMPROVEMENT PROJECT  
**REDBUD BIKE PATH**  
**STREET PAVEMENT & CROSSWALK DETAILS**

**Baughman Company, P.A.**  
 315 Ellis St. Wichita, KS 67211 P 316-262-7271 F 316-262-0149  
 ENGINEERING | SURVEYING | PLANNING | LANDSCAPE ARCHITECTURE

AUGUST, 2014  
 SHEET  
**4**  
 OF  
**84**