

- 1 Steel finished with epoxy paint matching Pantone DS329-9C color and Anti Graffiti Clear-coat material.
- 2 Steel Ring welded continuous to both verticle panels (all welds to be "V" or "Double V"; Exterior welds to be ground smooth)
- 3 Steel Panels for top and bottom caps to be welded continuously (all welds to be "V" or "Double V"; exterior welds to be ground smooth)
- 4 All seams to be welded with double "V" weld and exterior ground smooth
- 5 Steel Pole to be welded continuous to Arch. (All Welds to be "V" or "Double V")
- 6 6" OD Steel Pole with epoxy paint matching Pantone DS329-9C color and Anti Graffiti Clear-coat material.
- 7 Bolt plate to be attached to Footing with min. 4 Bolts per plate.
- 8 Plaza Pavers

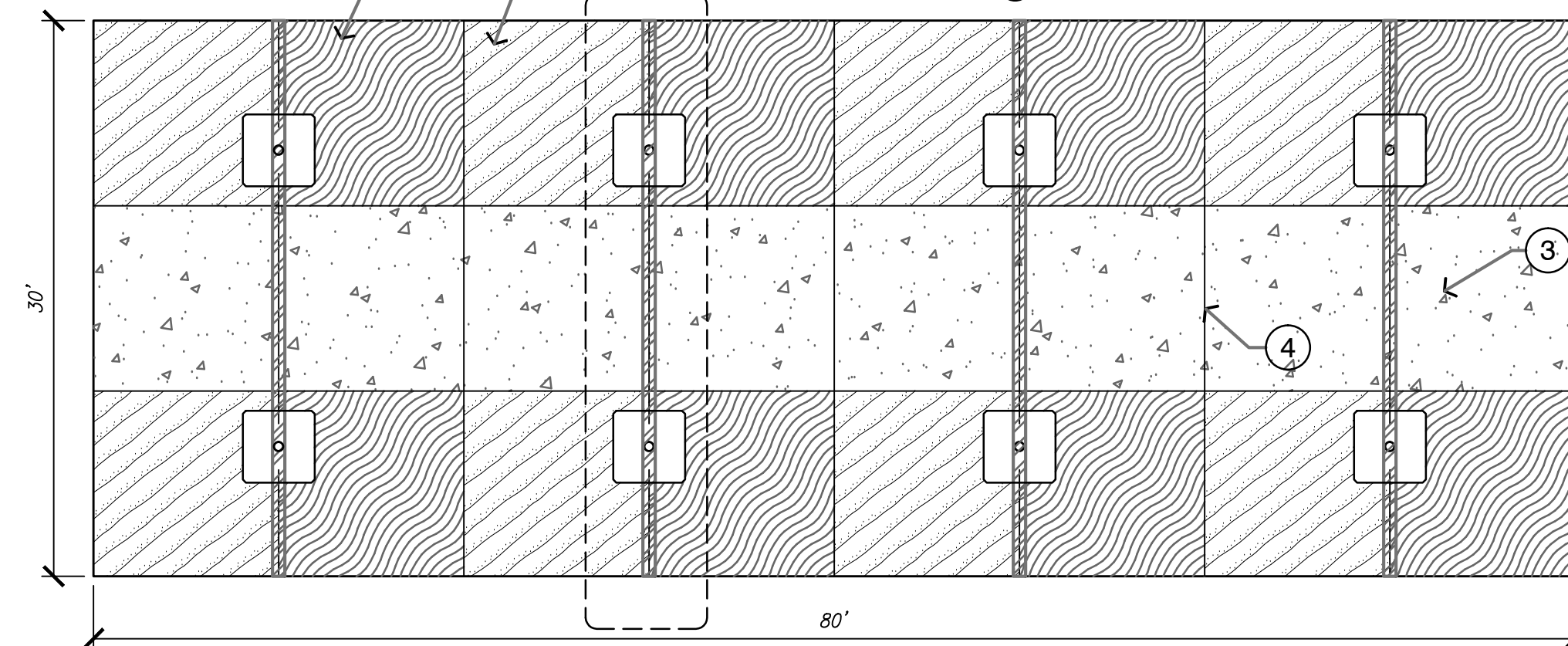
Note: Contractor to provide shop drawings prior to the start of construction.

1 PLAZA ARCH STRUCTURE SECTION

1/4" = 1'-0"

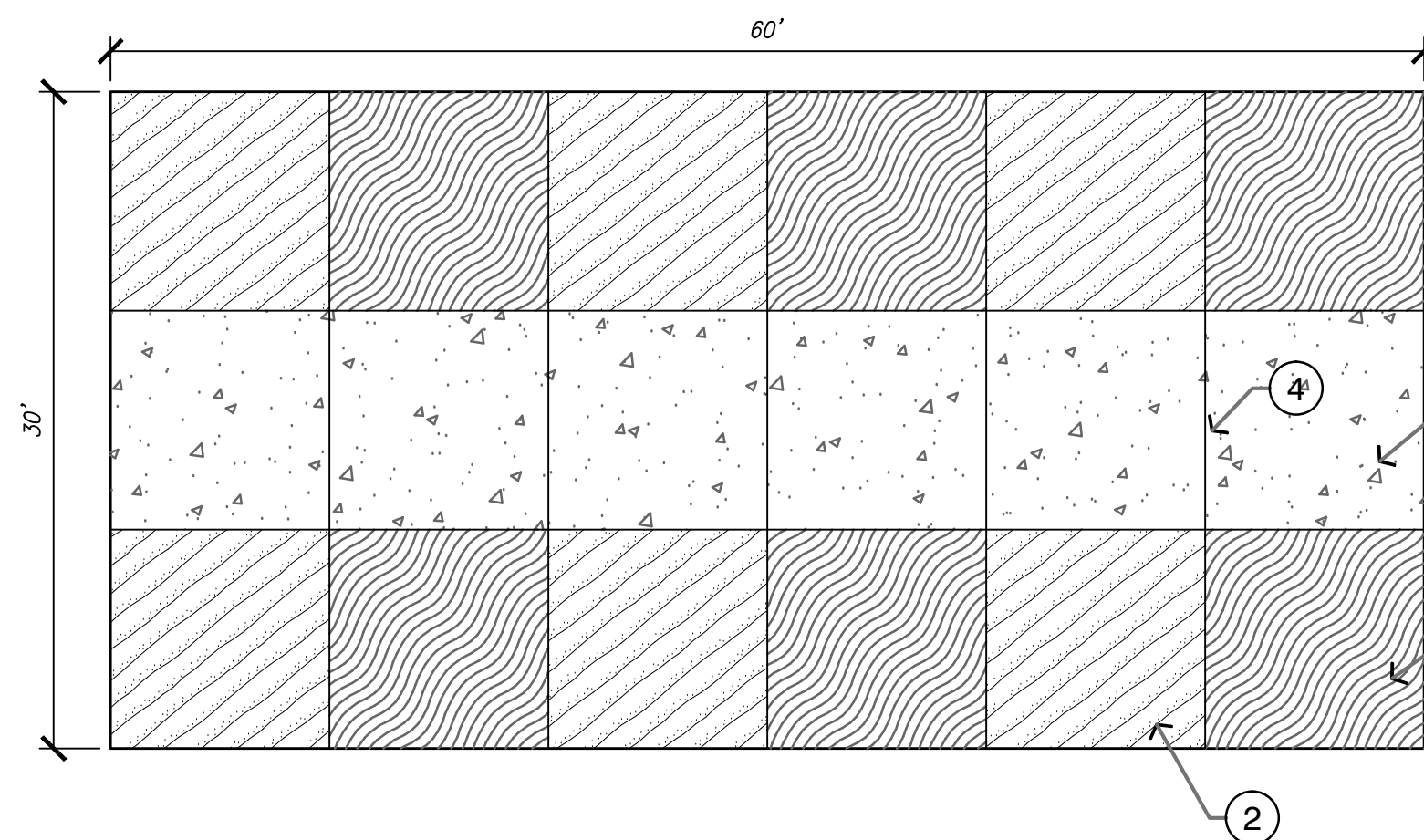
05-01

- 1 Holland Stone Parkway 60mm Series from PaveStone, Color: Winter Blend. Installed per manufacture specifications.
- 2 Holland Stone Parkway 60mm Series from PaveStone, Color: Oaks Blend. Installed per manufacture specifications.
- 3 5" Concrete Panel; (no color additive). Concrete to be reinforced with 6" x 6" w1.4 x w1.4 Welded Wire Fabric
- 4 See Bikepath Section and Details for typical joints



2 LINEAR BIKE PATH PLAZA (13TH STREET & 17TH STREET)

1/8" = 1'-0"

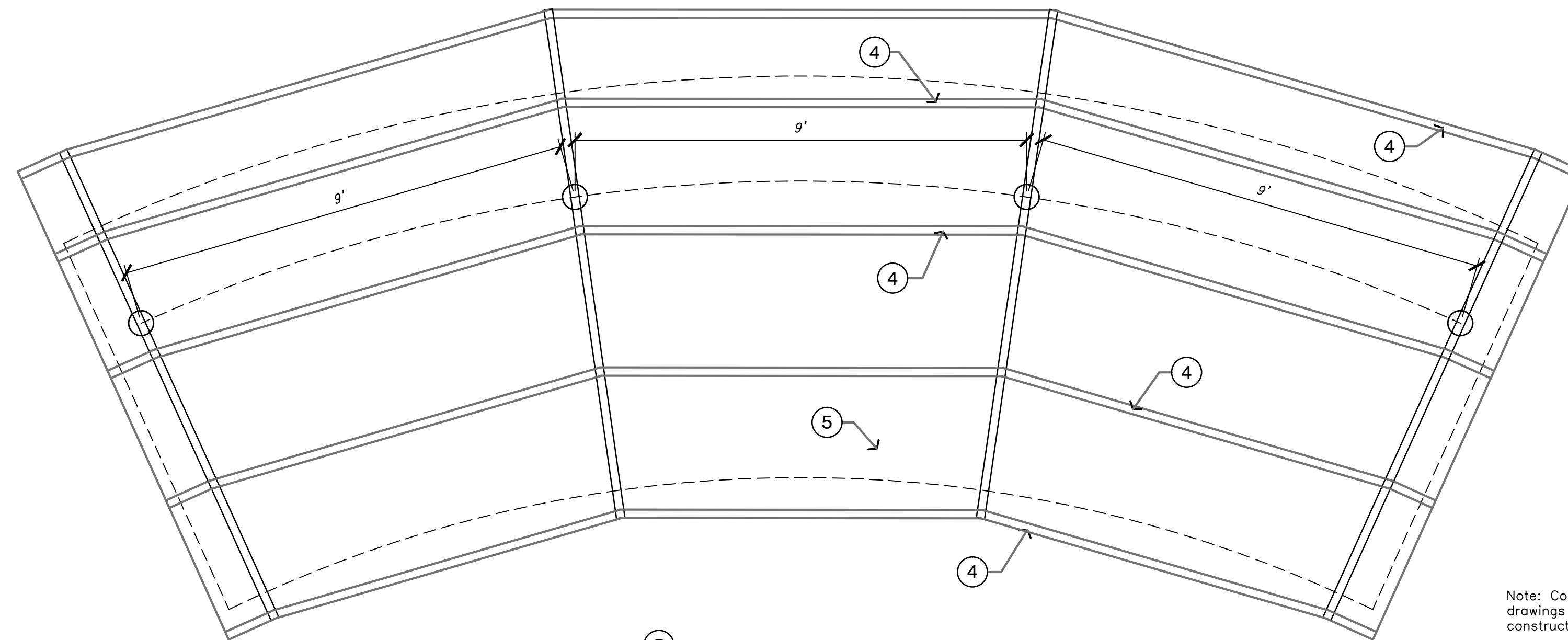


- 1 Holland Stone Parkway 60mm Series from PaveStone, Color: Winter Blend. Installed per manufacture specifications.
- 2 Holland Stone Parkway 60mm Series from PaveStone, Color: Oaks Blend. Installed per manufacture specifications.
- 3 5" Concrete Panel; (no color additive). Concrete to be reinforced with 6" x 6" w1.4 x w1.4 Welded Wire Fabric
- 4 See Bikepath Section and Details for tpical joints

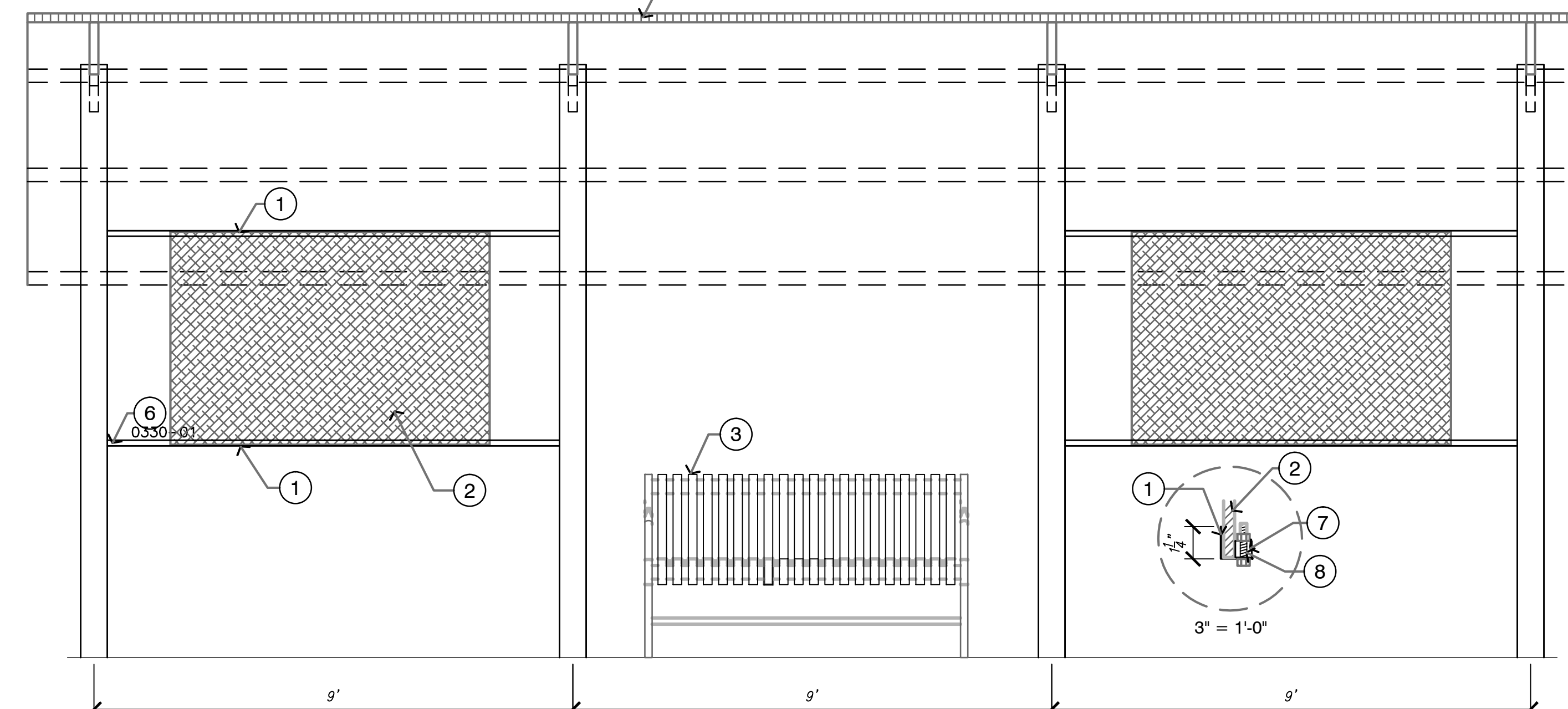
3 LINEAR BIKE PATH PLAZA (HYDRAULIC)

1/8" = 1'-0"

0330-13



Note: Contractor to provide shop drawings prior to the start of construction.



4 SHADE STRUCTURE

1/2" = 1'-0"

05-03

- 1 Art Panel Frame 1-1/4" Angle Iron
- 2 Art Panel (Hillside - (2) 4'x6' Panels per Shade Structure; 17th - (1) 6'x8' Panel per Shade Structure)
- 3 6' Dumor Bench (Hillside - (1) Bench per Shade Structure; 17th - (2) Benches per Shade Structure)
- 4 2x1 Steel Structural Rectangular Tube Welded to Steel Structures
- 5 Shade structures to be topped with Ribbed Sheet Metal or approved Equal, with an epoxy paint finish matching Pantone DS 231-5C or approved equal.
- 6 Attach Art Panel Frames to Steel to Steel Pipe either by Welds or by Bolts
- 7 5/8" Square Steel Tubing
- 8 Bolt & Nut through Angle Iron and Square Tubing.