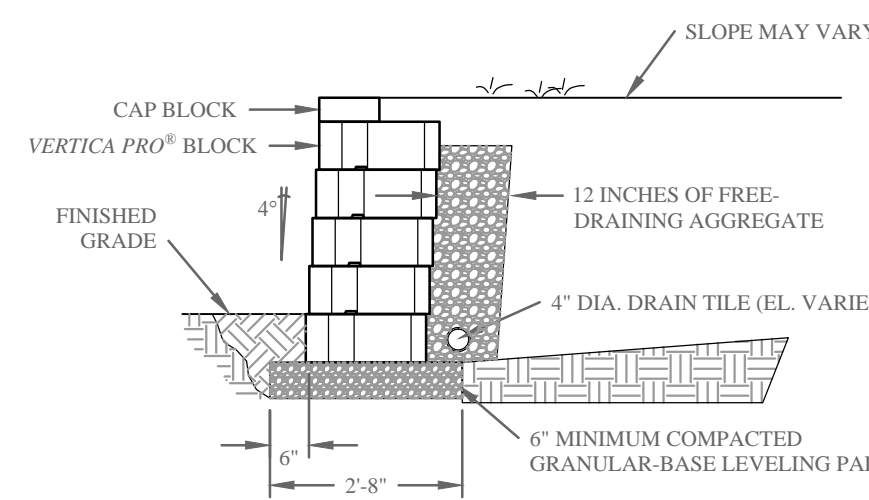
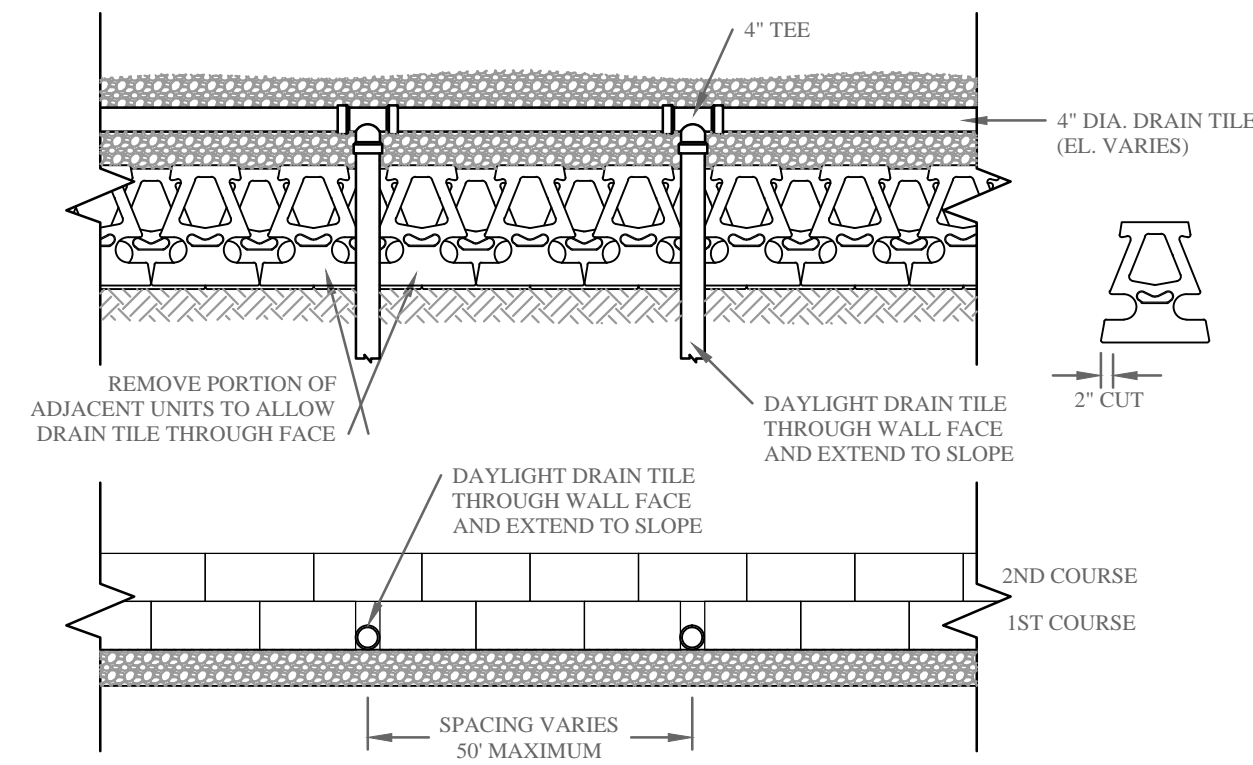


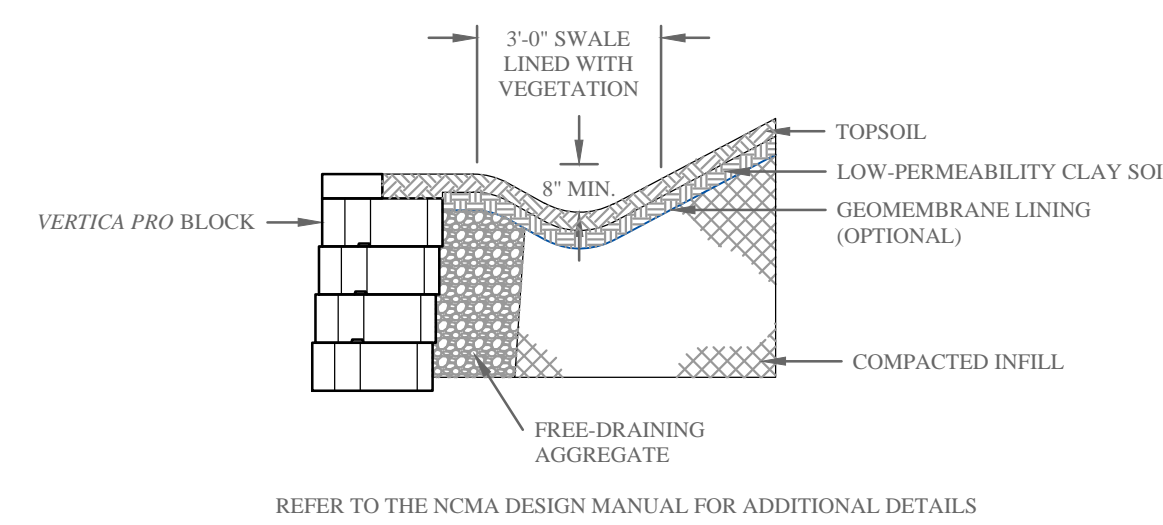
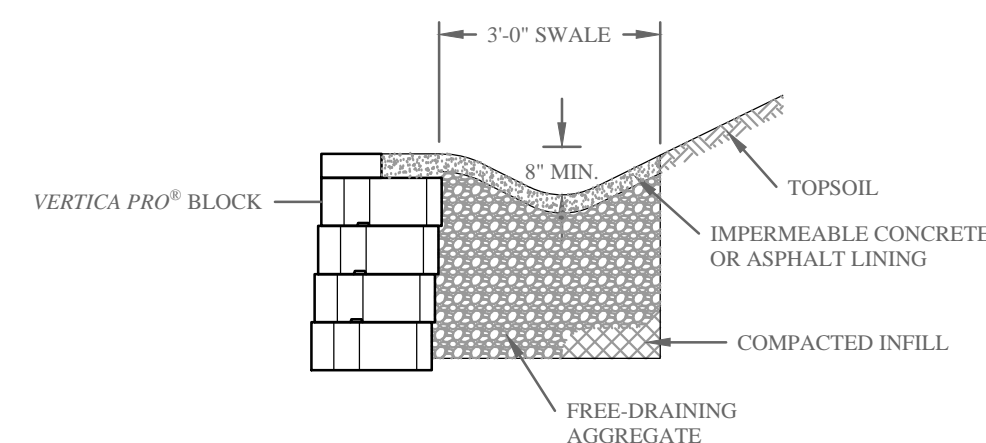
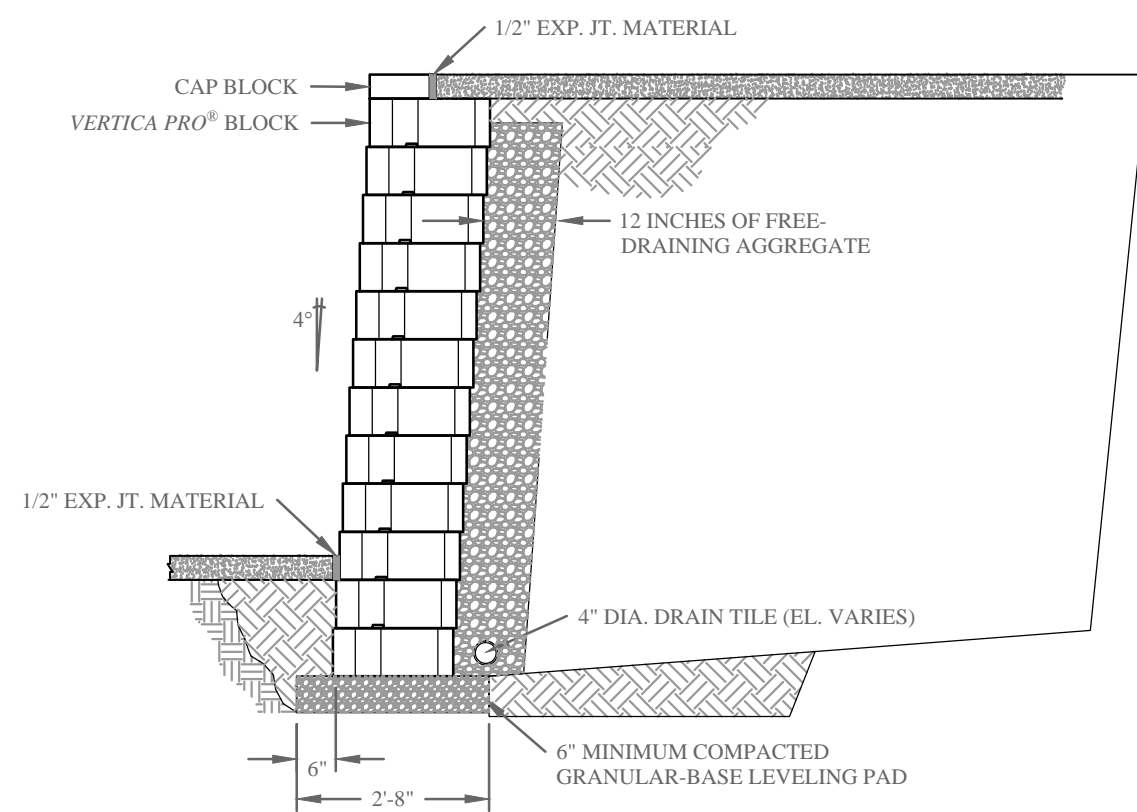
1. ALWAYS START CAPPING WALL FROM THE LOWEST ELEVATION.
2. LAY OUT CAPS PRIOR TO USING ADHESIVE.
3. CUT CAPS TO FIT. VARIOUS COMBINATIONS OF LONG- AND SHORT-CAP FACES WILL BE NECESSARY FOR RADII GREATER THAN THE MINIMUM.
4. ALTERNATE SHORT- AND LONG-CAP FACES EVERY OTHER CAP TO ACHIEVE A STRAIGHT ROW OF CAPS.
5. USE EXTERIOR-GRADE CONSTRUCTION ADHESIVE TO SECURE CAPS.

- Wall Notes:**
1. Wall shall be constructed using manufactures preferred method for non-reinforced wall.
  2. Wall shall be constructed with Vertica Pro from Anchor Wall Systems with the Beveled Face. Color shall be Ozark Blend (tan & gray blend)
  3. Shallow swale shall be graded on top of wall to ensure positive drainage away from wall system.
  4. All details shown are typical details available from manufacturer and may require adjustment based on site conditions.



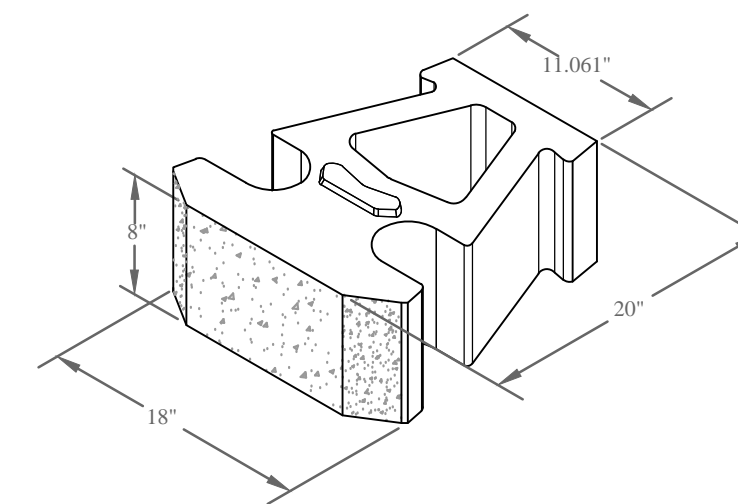
**Anchor™ Vertica Pro® Retaining Wall**  
**TYPICAL GRAVITY WALL**  
 (SCALE: 3/8"=1'-0")

**Anchor™ Vertica Pro® Retaining Wall**  
**DAYLIGHT DRAINTILE THRU TOE SLOPE**  
 (SCALE: 3/8"=1'-0")

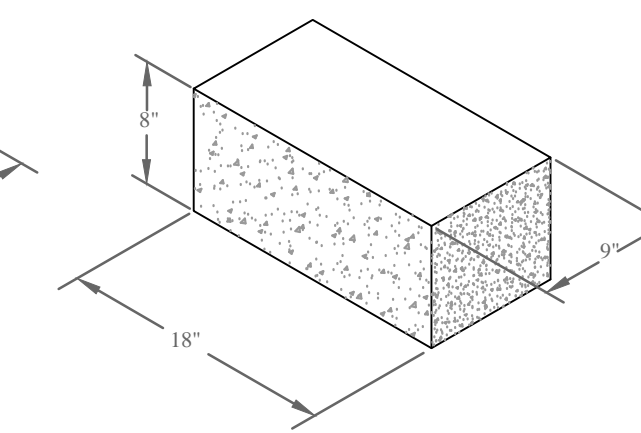


REFER TO THE NCMA DESIGN MANUAL FOR ADDITIONAL DETAILS

**Anchor™ Vertica Pro® Retaining Wall**  
**CAP BLOCK DETAILS**  
 (SCALE: NONE)

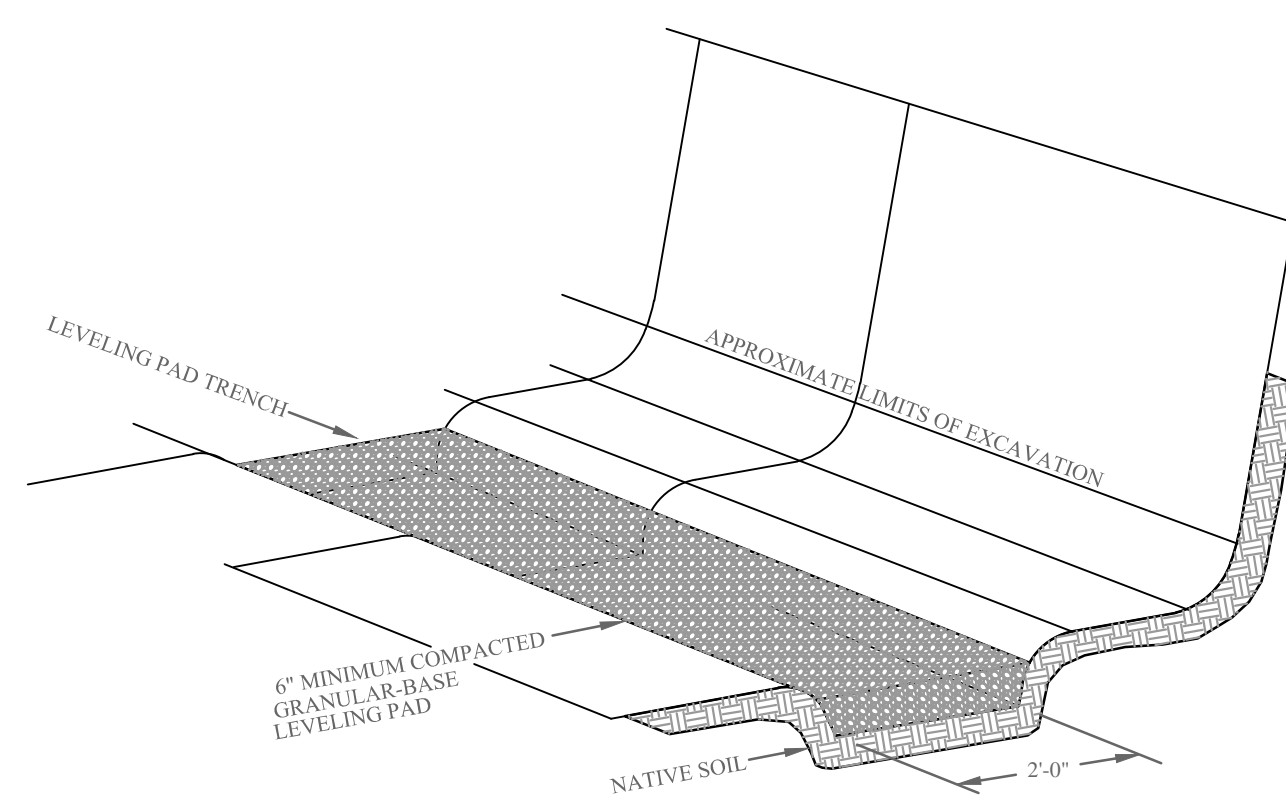


**BEVELED UNIT**



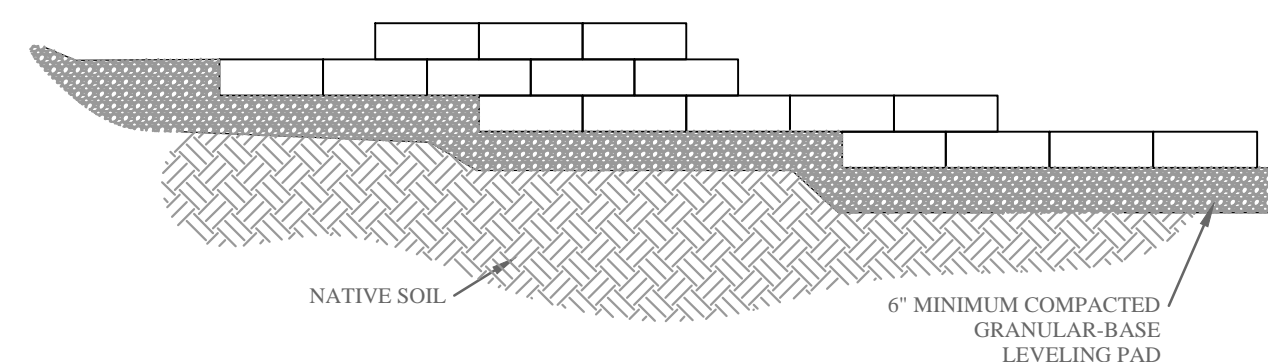
**CORNER UNIT**

**Anchor™ Vertica Pro® Retaining Wall**  
**SIDEWALK ABOVE/BELOW WALL**  
 (SCALE: 3/8"=1'-0")

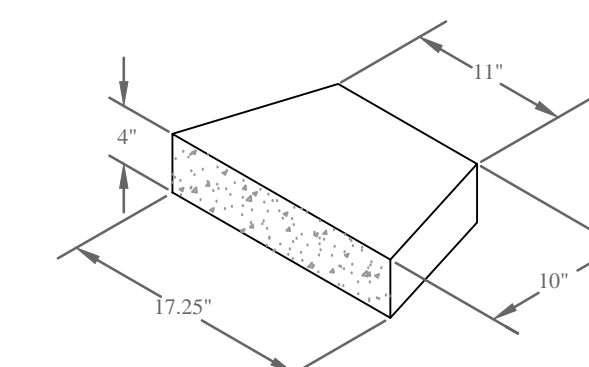


**Anchor™ Vertica Pro® Retaining Wall**  
**TYPICAL BASE PREPARATION**  
 (SCALE: NONE)

**Anchor™ Vertica Pro® Retaining Wall**  
**DRAINAGE SWALE DETAILS**  
 (SCALE: 3/8"=1'-0")



**Anchor™ Vertica Pro® Retaining Wall**  
**TYPICAL STEP UP DETAIL**  
 (SCALE: NONE)



**CAP UNIT**

**Anchor™ Vertica Pro® Retaining Wall**  
**ISOMETRIC BLOCK VIEWS**  
 (SCALE: NONE)