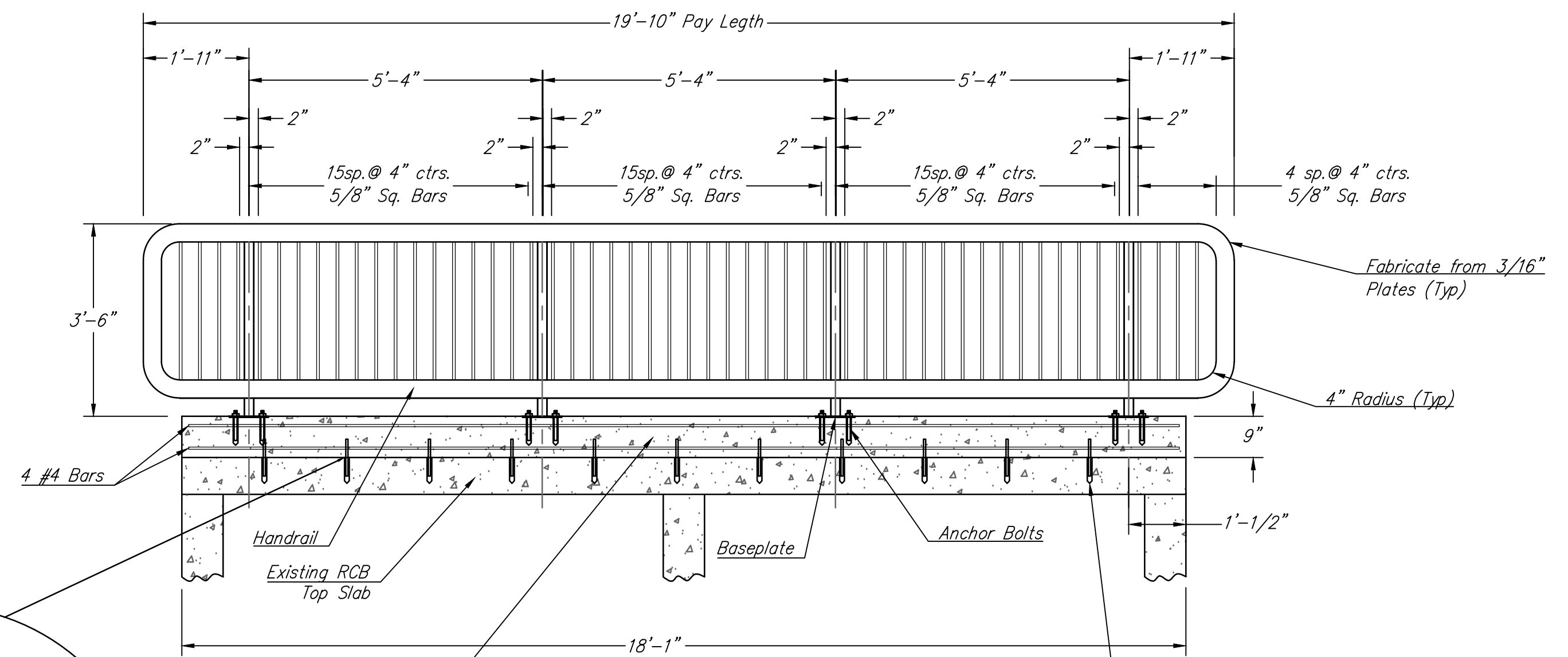
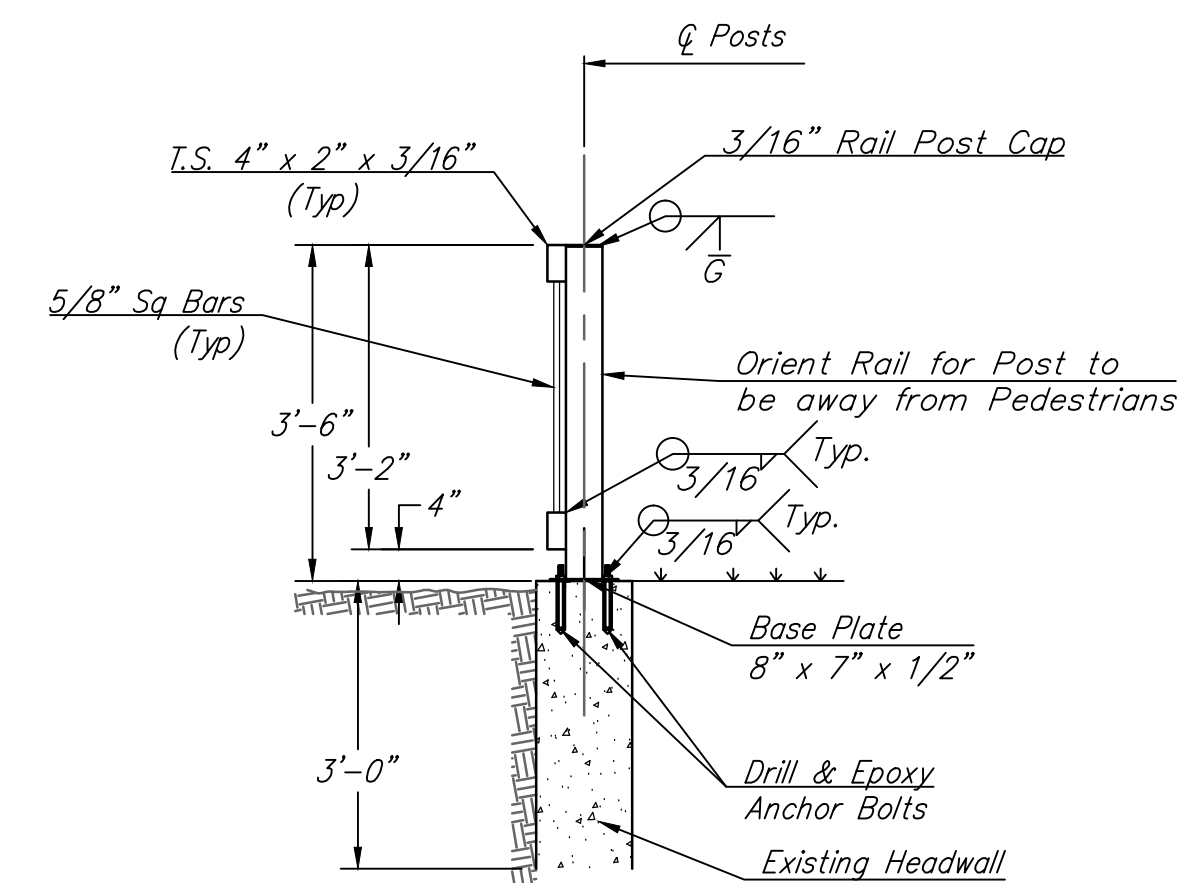


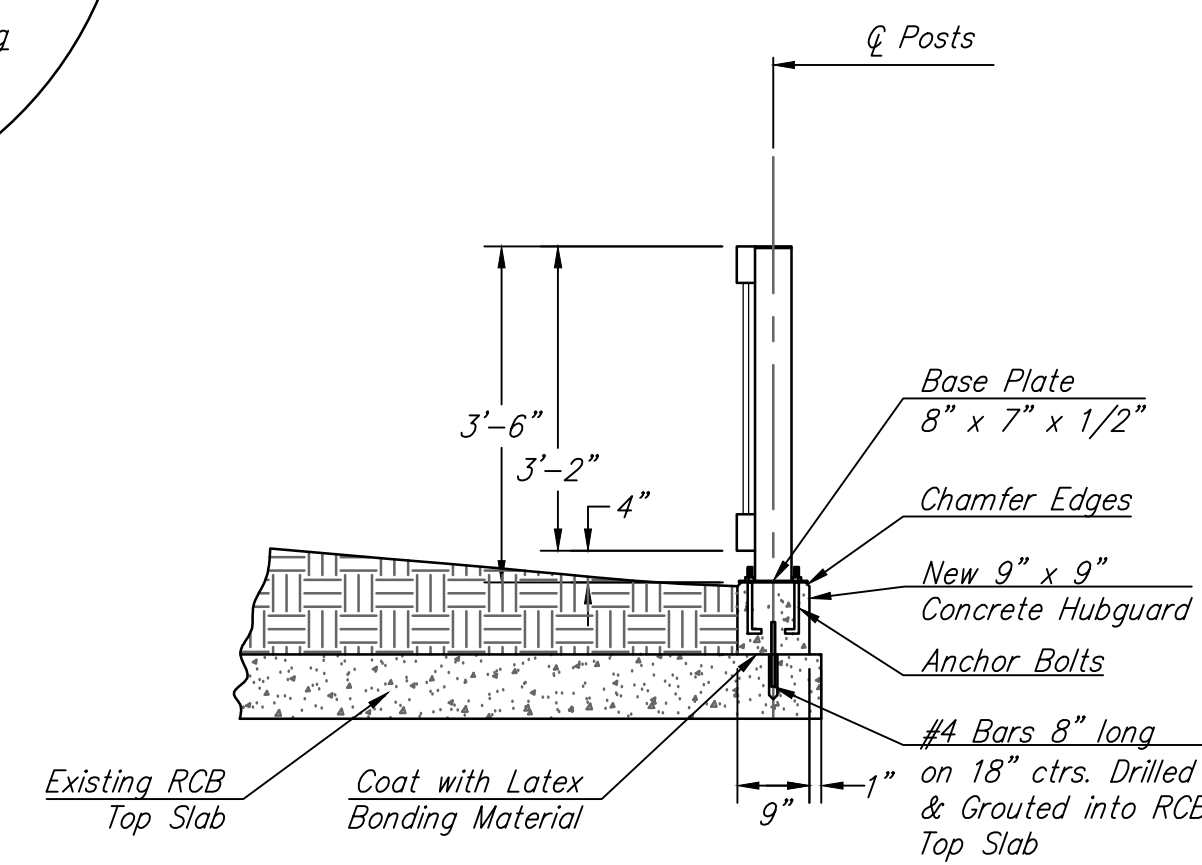
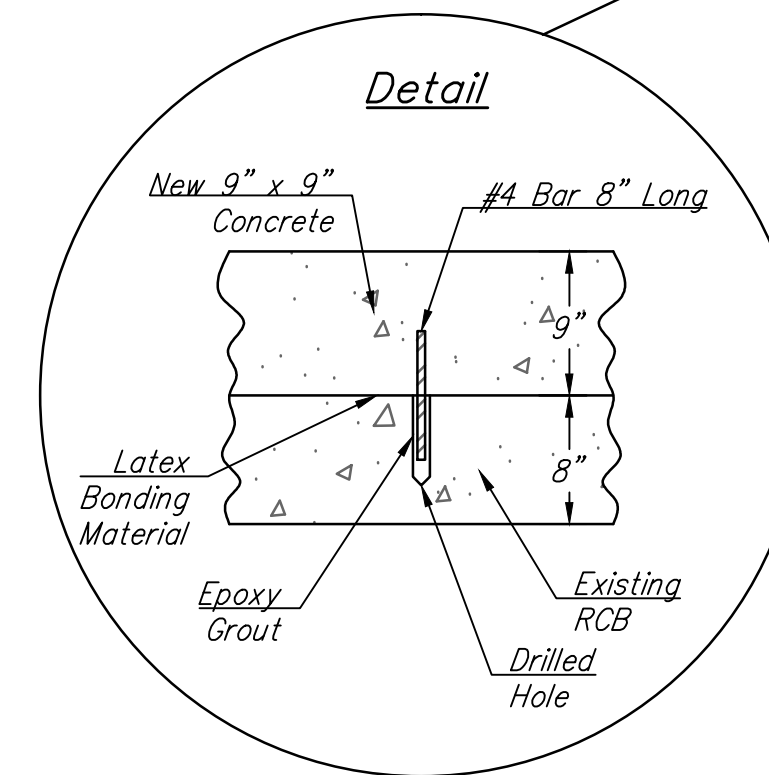
**RCB HANDRAIL DETAIL
PIATT & GROVE**
1"=2'



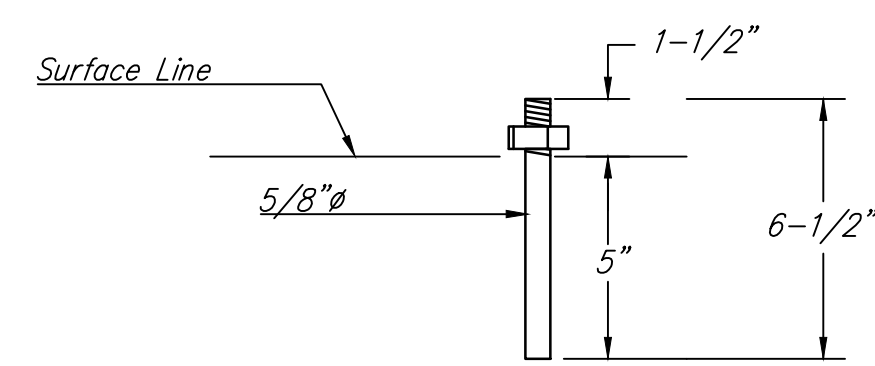
**RCB HANDRAIL &
HUBGUARD DETAIL
GREEN**
1"=2'



**RCB HANDRAIL POST
DETAIL**
1"=2'

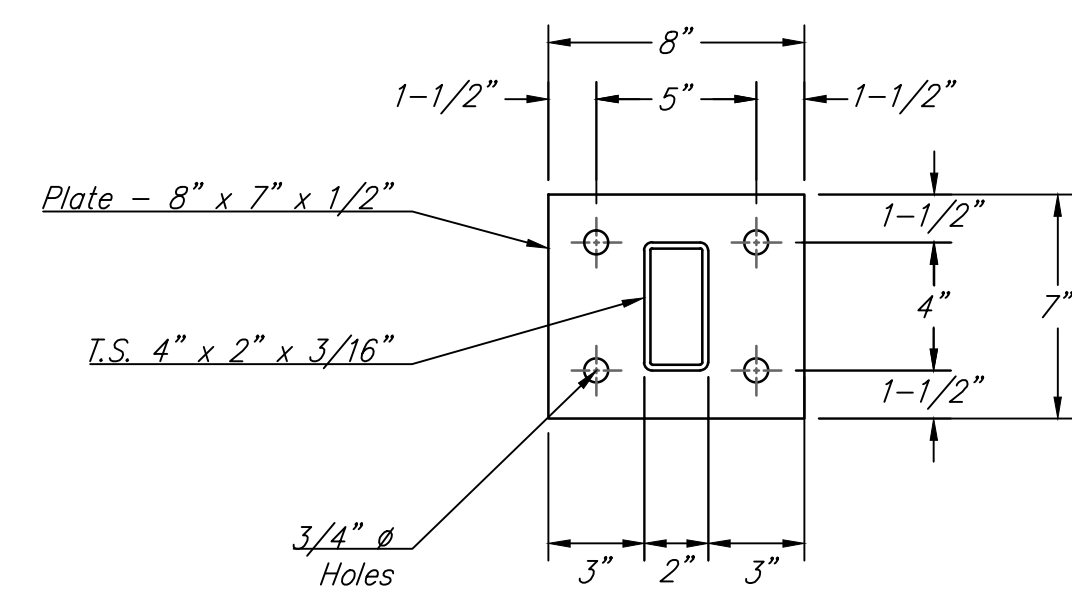


HUBGUARD DETAIL
1"=2'

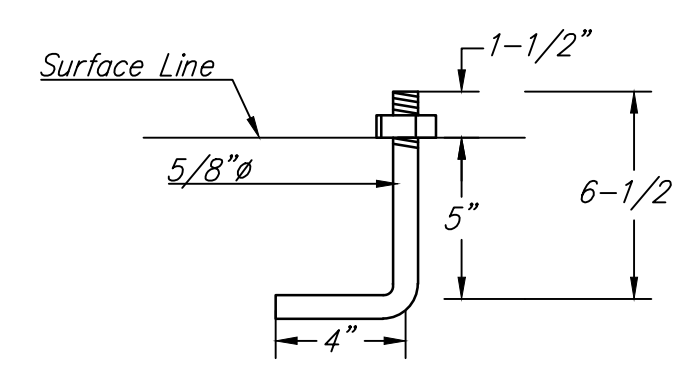


**DRILLED ANCHOR BOLT
DETAIL**

Galvanized (ASTM A153)
(May Substitute
Expandable Anchor Bolt
when Approved by the
Engineer.)

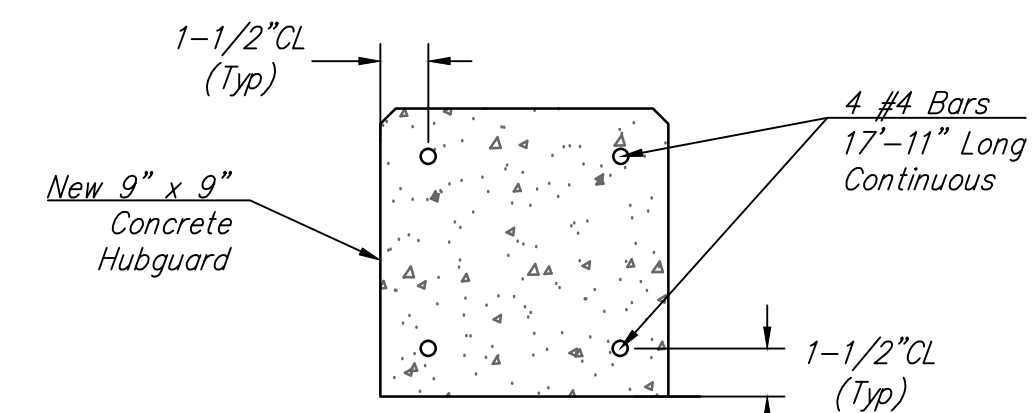


**BASE PLATE
DETAIL**



**CAST IN PLACE ANCHOR BOLT
DETAIL**

Galvanized (ASTM A153)
(May Substitute
Expandable Anchor Bolt
when Approved by the
Engineer.)



**REINFORCING
DETAIL**

GENERAL NOTES

The posts shall be hollow structural tubing. All structural steel and tubing shall comply to A.S.T.M. Designation A36 or A500 Grade B respectively.

Rail shall be fabricated in lengths as shown.

Posts and bars shall be set vertical and shimmed if required.

The paint system shall be provided by Carboline: 350 Hanley Industrial Ct., St. Louis, MO. The application will be in accordance with the manufacturers recommendations. The paint procedure is as follows:
1. Abrasive blast to commercial finish SSPC-SP6 to obtain a surface profile of 1-1/2 mils.
2. Apply 2 coats of Carboline GP 818 Primer (2 to 4 mils per coat).
3. Apply one topcoat of Subsil 30 HS (2 to 3 mils) (Color Carboline 2277).
An approved substitution of the total paint system will be allowed with the approval of the Engineer.

Material and construction shall conform to the Structural Welding Code A.W.S. D1.1-00.

Shop details must be submitted and approved by the Engineer.