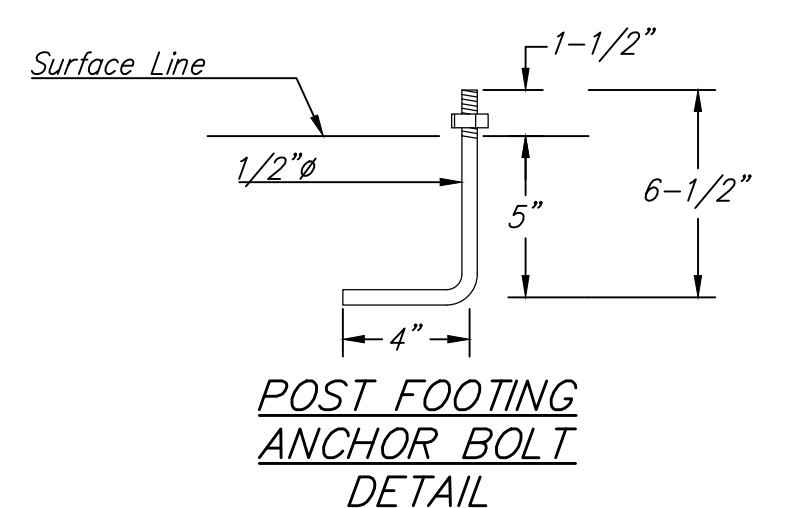
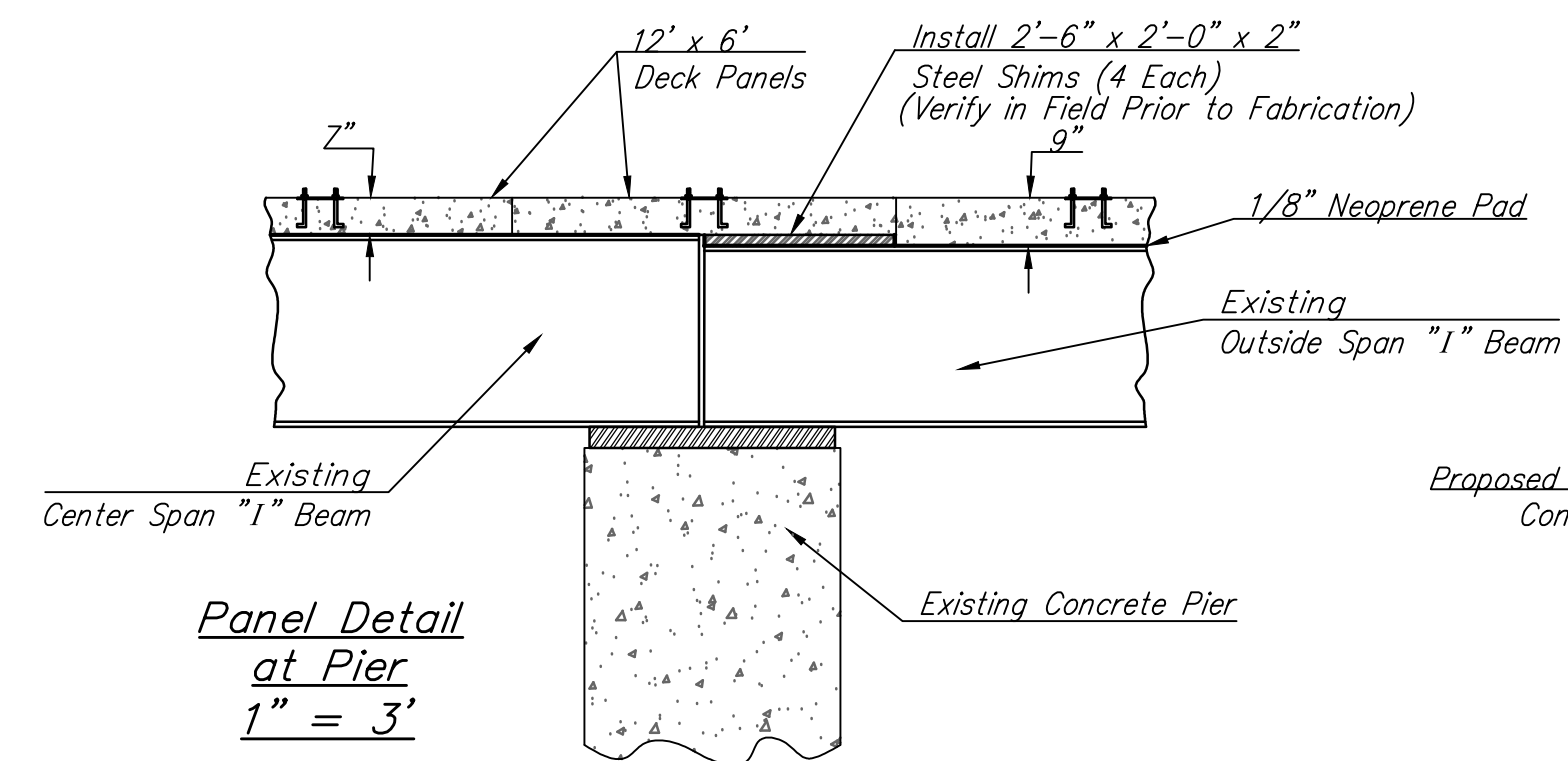


**DECK PANEL & HANDRAIL POST DETAIL**  
1" = 2'

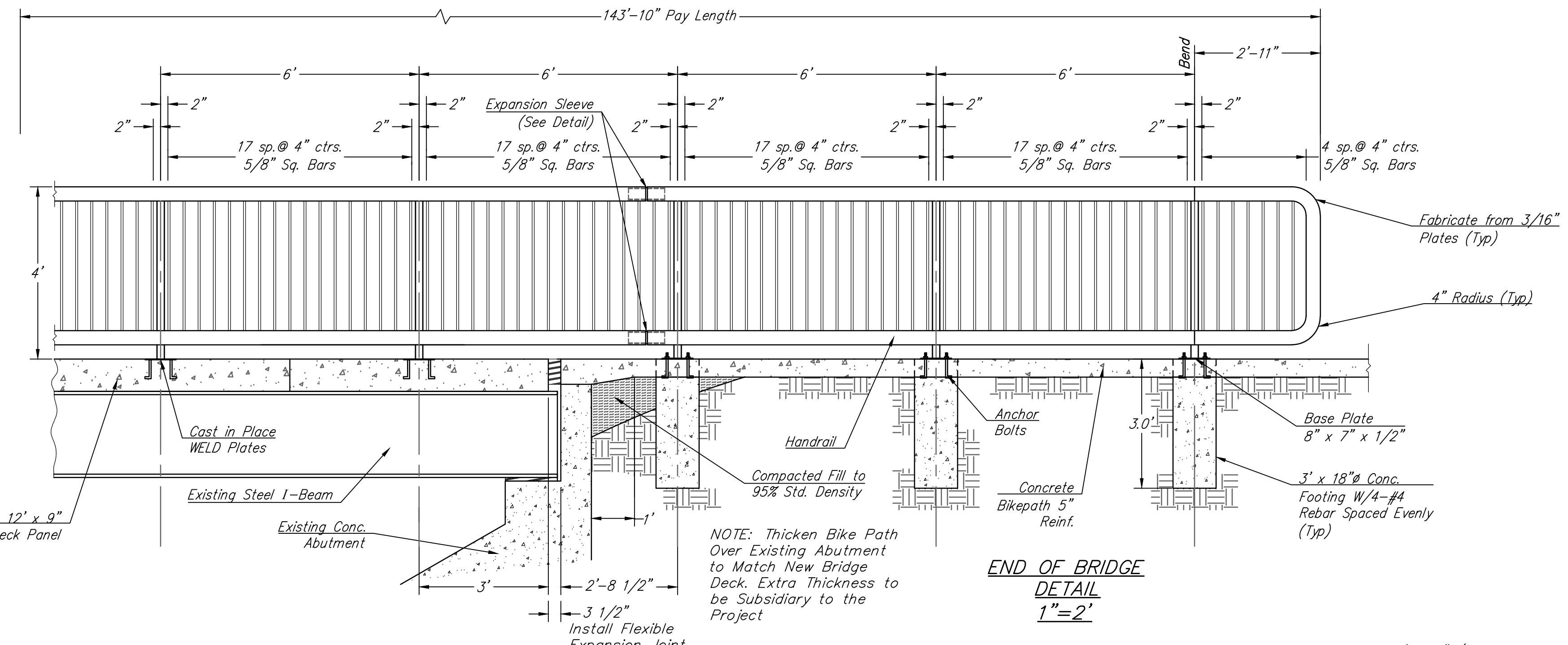


**POST FOOTING ANCHOR BOLT DETAIL**

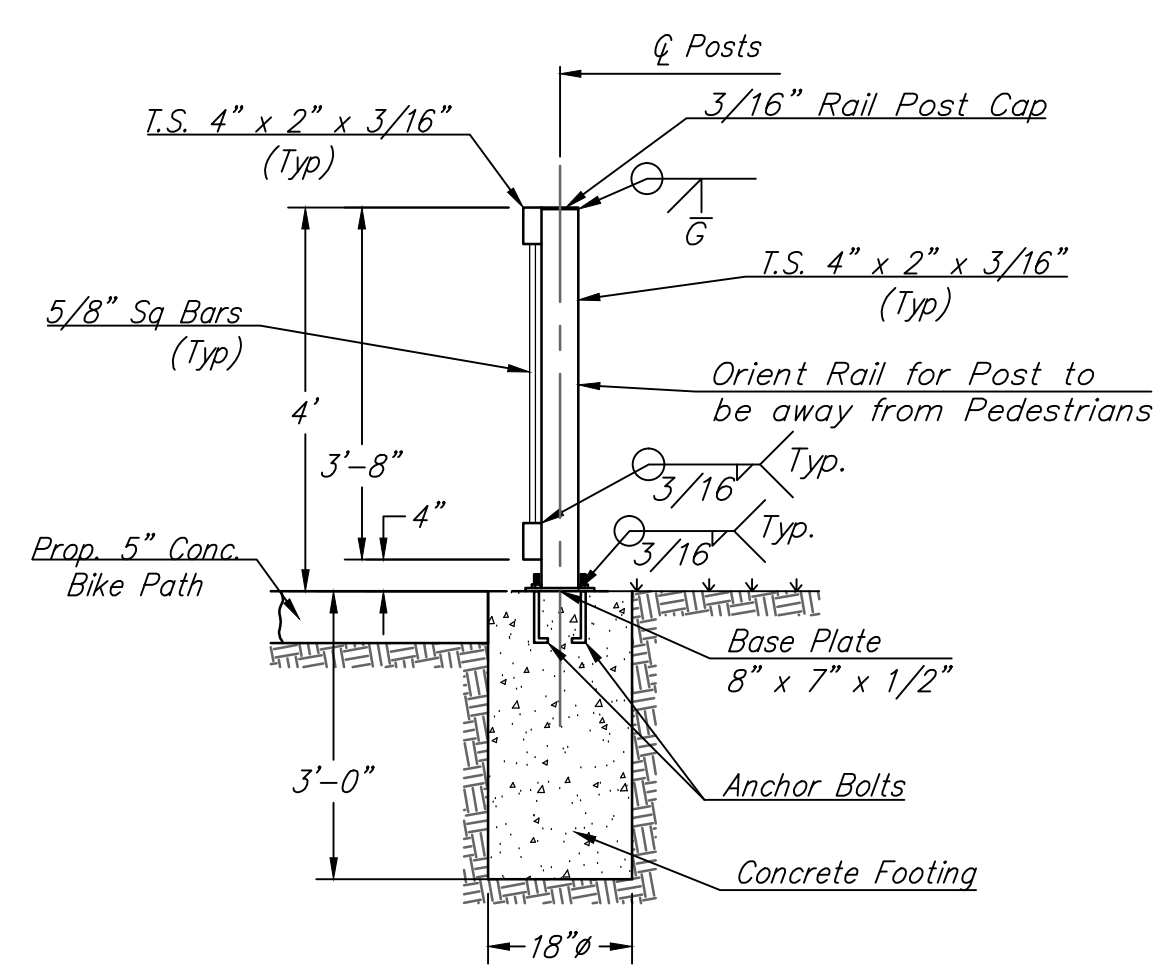
Galvanized (ASTM A153)  
(May Substitute Expandable Anchor Bolt when Approved by the Engineer.)



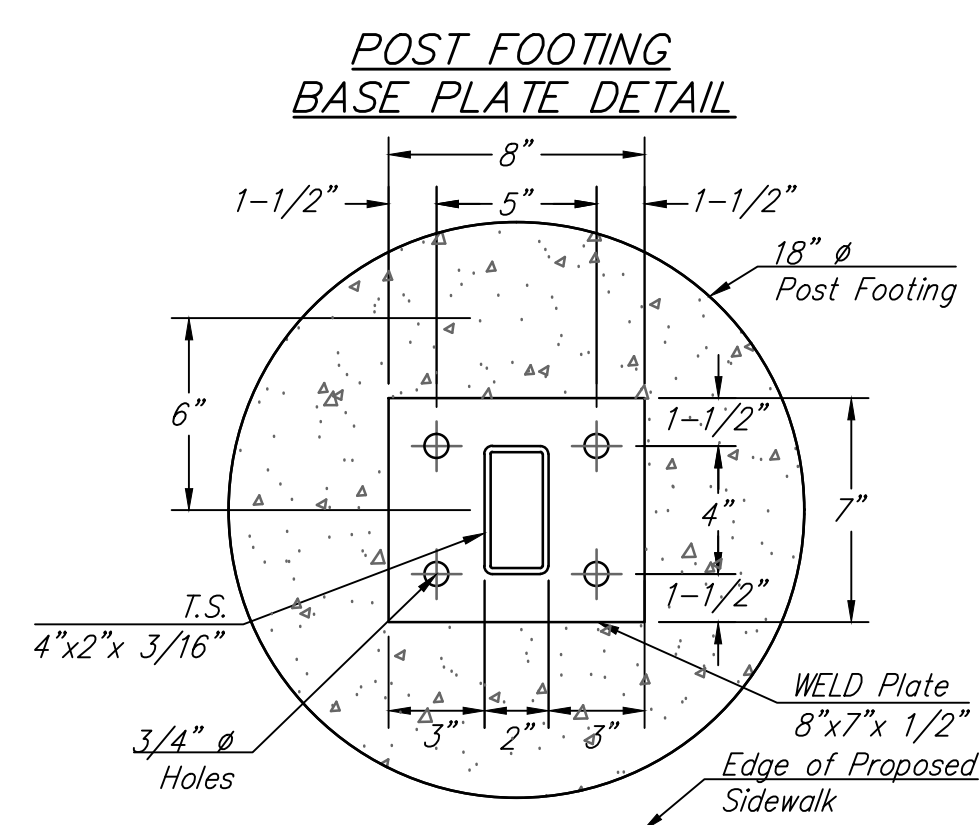
**Panel Detail at Pier**  
1" = 3'



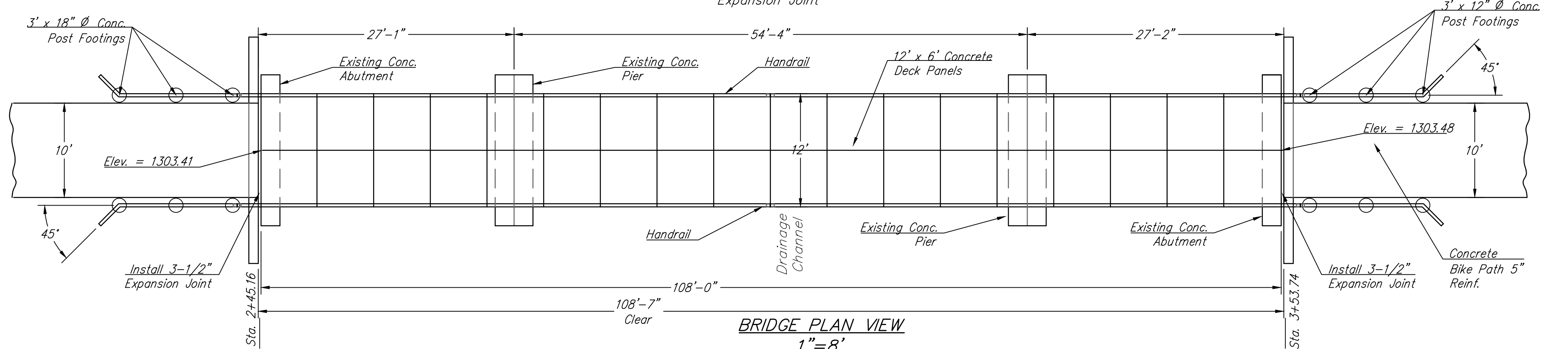
**END OF BRIDGE DETAIL**  
1" = 2'



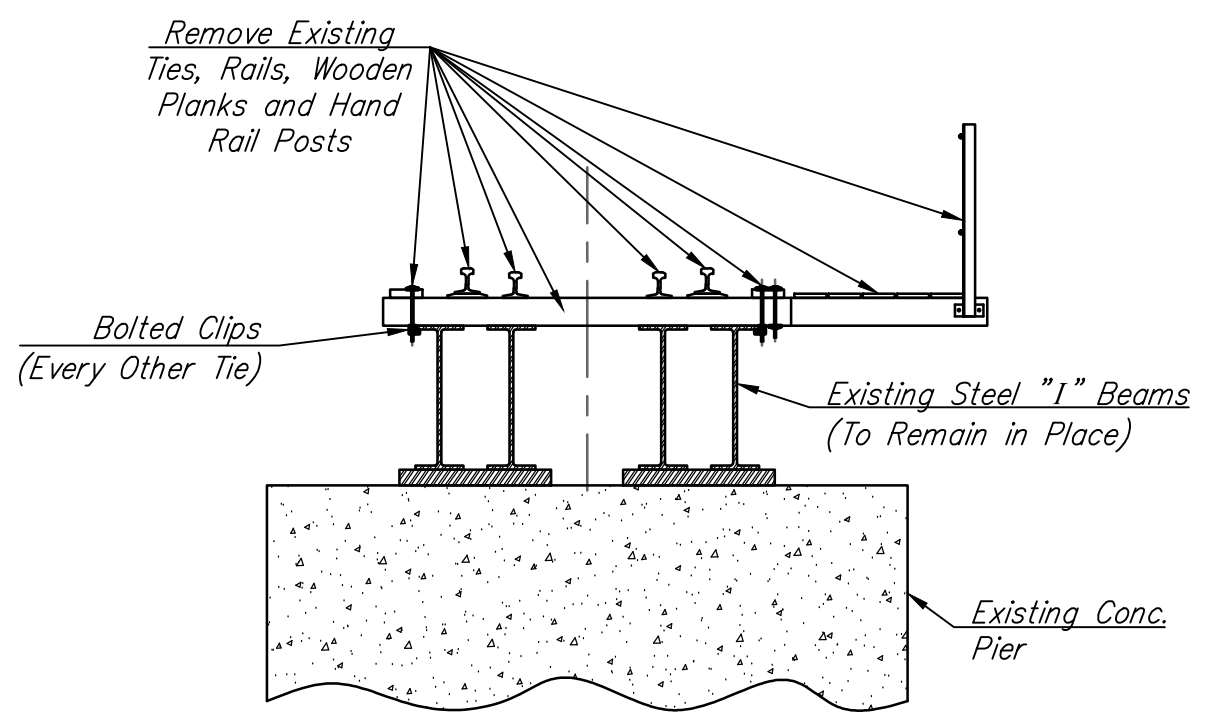
**HANDRAIL POST DETAIL (BEYOND BRIDGE)**  
1" = 2'



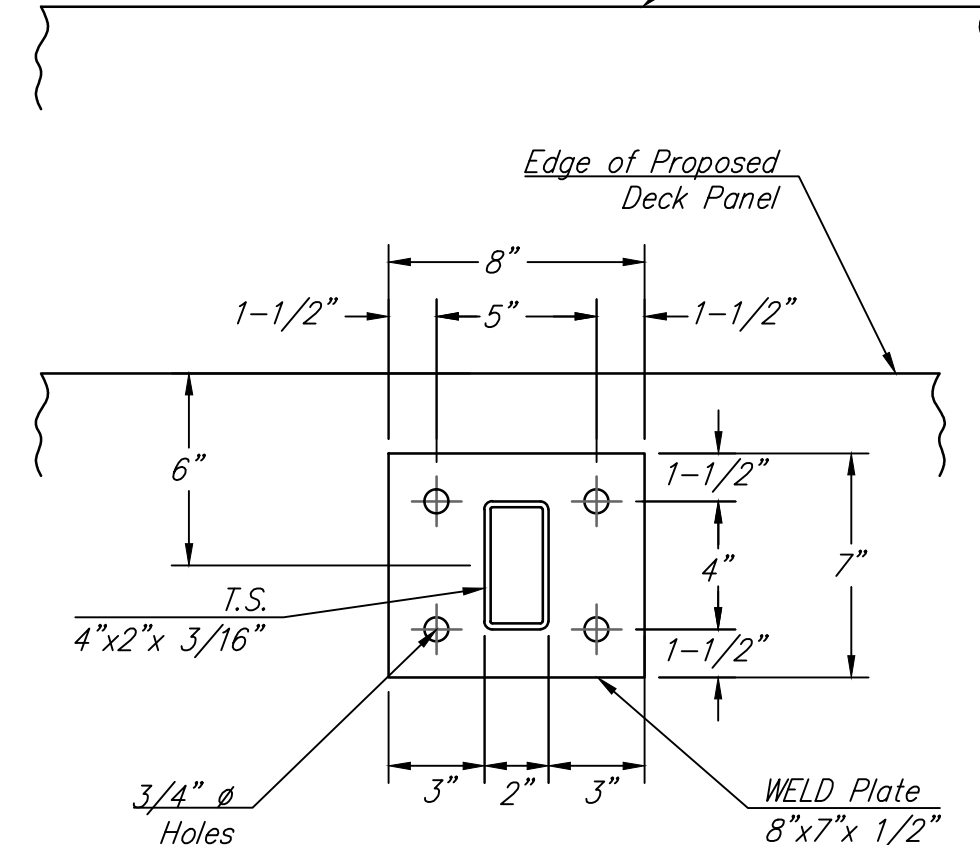
**POST FOOTING BASE PLATE DETAIL**



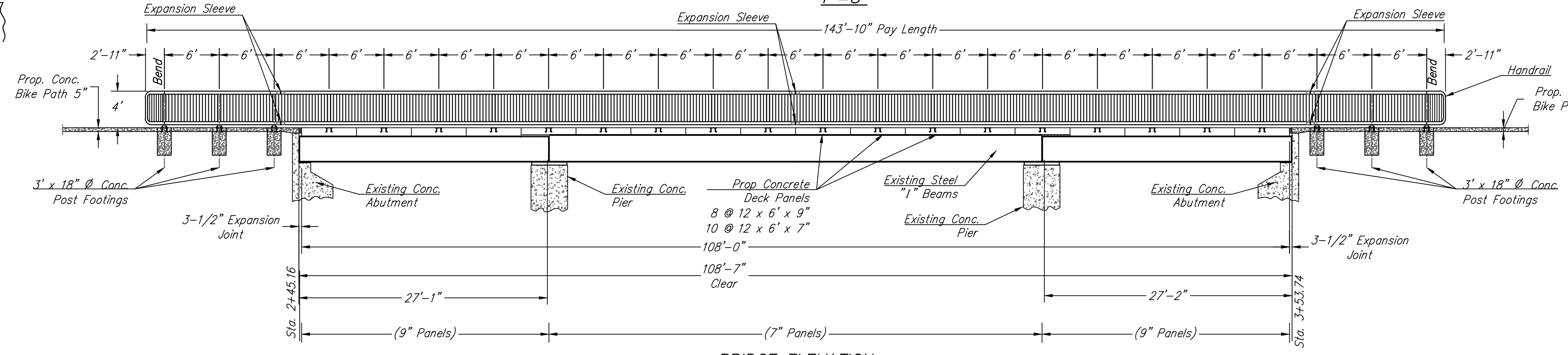
**BRIDGE PLAN VIEW**  
1" = 8'



**EXISTING BRIDGE SECTION (Center Span Shown)**  
1" = 2'



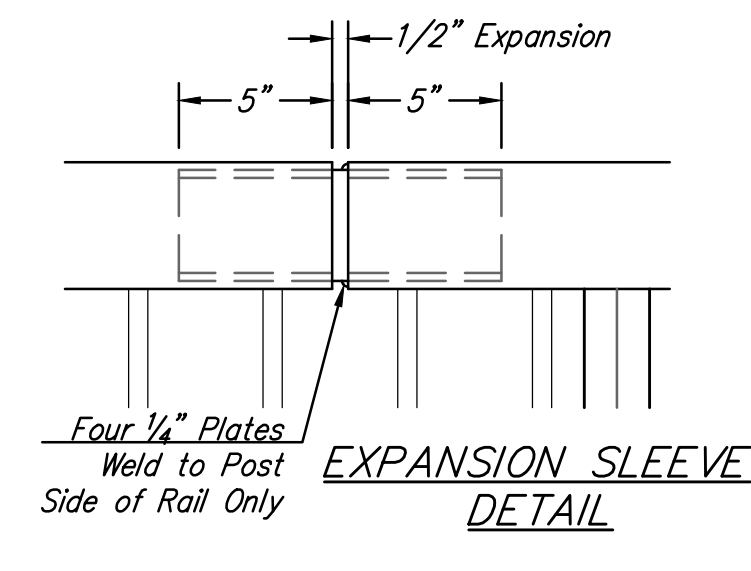
**DECK PANEL BASE PLATE DETAIL**



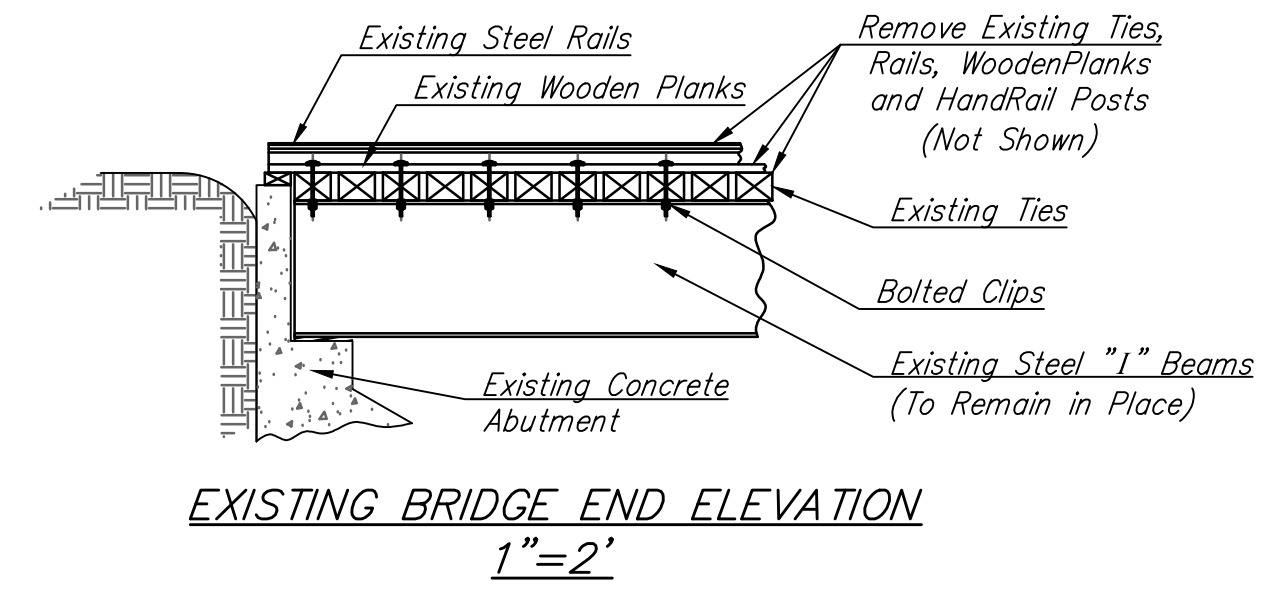
**BRIDGE ELEVATION**  
1" = 8'

**GENERAL NOTES**

- The posts shall be hollow structural tubing. All structural steel and tubing shall comply to A.S.T.M. Designation A36 or A500 Grade B respectively.
- Rail shall be fabricated in lengths as shown.
- Posts and bars shall be set vertical and shimmed if required.
- The paint system shall be provided by Carboline: 350 Hanley Industrial Ct., St. Louis, MO. The application will be in accordance with the manufacturers recommendations. The paint procedure is as follows:
  - Abrasive blast to commercial finish SSPC-SP6 to obtain a surface profile of 1-1/2 mils.
  - Apply 2 coats of Carboline GP 818 Primer (2 to 4 mils per coat).
  - Apply one topcoat of Subsll 30 HS (2 to 3 mils) (Color Carboline 2277). An approved substitution of the total paint system will be allowed with the approval of the Engineer.
- Material and construction shall conform to the Structural Welding Code A.W.S. D1.1-00.
- Shop details must be submitted and approved by the Engineer.



**EXPANSION SLEEVE DETAIL**  
1" = 2'



**EXISTING BRIDGE END ELEVATION**  
1" = 2'

Drawing File: E:\Projects\Reelbud Bike Path\Details\Bridge Deck & Handrail Details\Bridge Deck & Handrail.dwg  
 Design: KK  
 Drawn: JM  
 Approved: JFB  
 Scale: NOTED

Project No. 11-07-E650 CAPITAL IMPROVEMENT PROJECT  
**REDBUD BIKE PATH**  
 BRIDGE DECK AND HANDRAIL DETAILS

**Baughman Company, P.A.**  
 315 Ellis St. Wichita, KS 67211 P 316-262-7271 F 316-262-0149  
 ENGINEERING | SURVEYING | PLANNING | LANDSCAPE ARCHITECTURE

AUGUST, 2014  
 SHEET **14** OF **84**