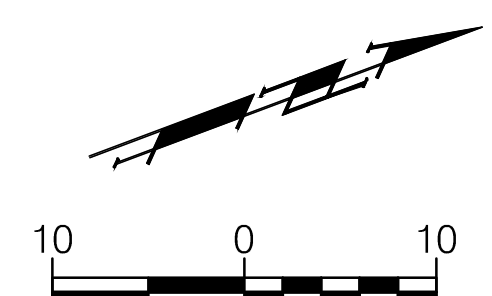
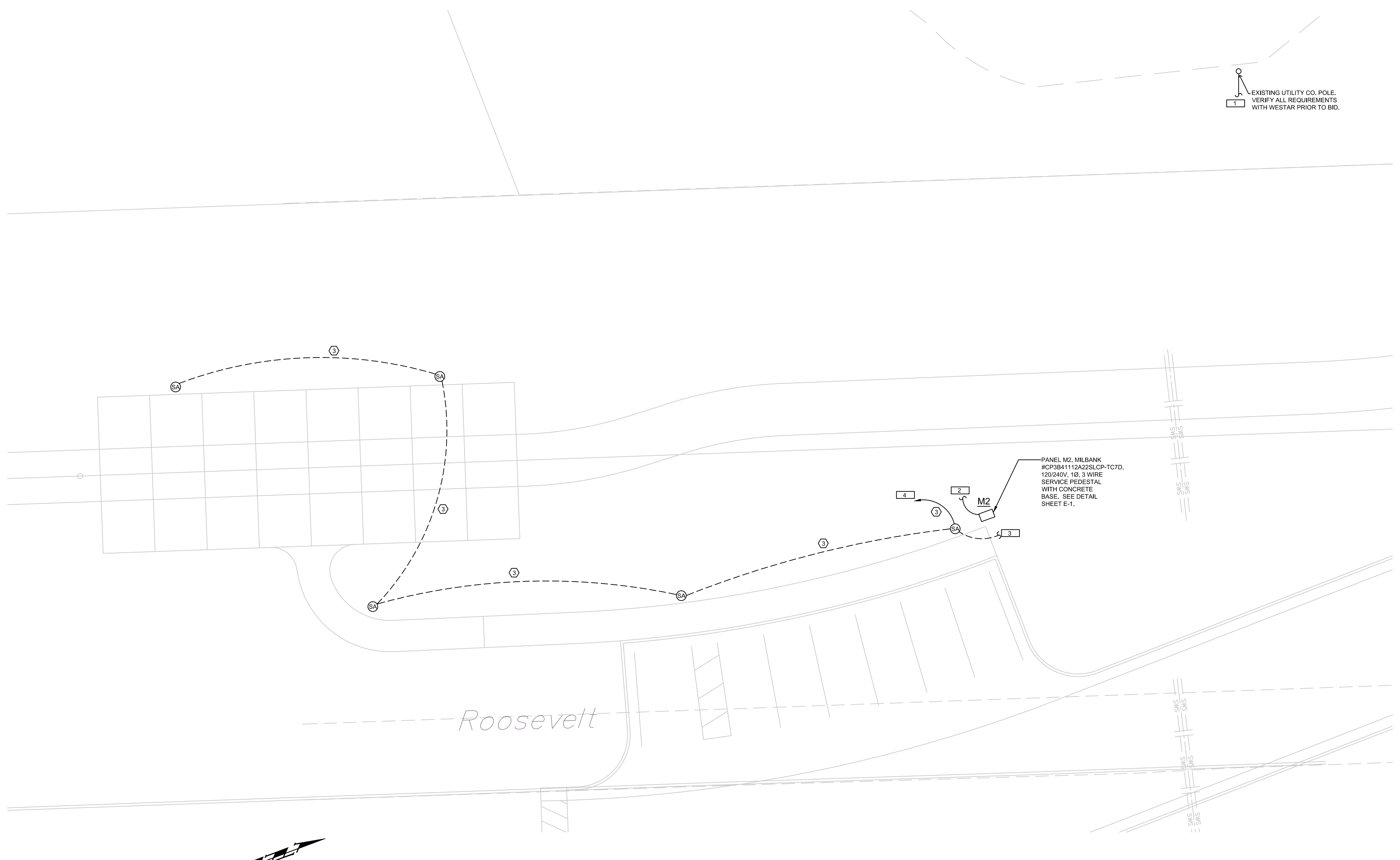


### PLAN NOTES

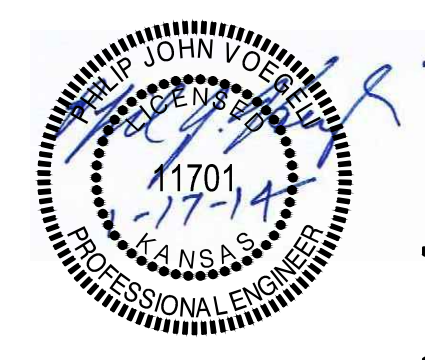
SYMBOL	DESCRIPTION
1	PANEL M2. CAN BE ROUTED TO EXISTING POWER POLE. WESTAR TO PROVIDE NEW POLE MOUNTED TRANSFORMER. E.C. TO VERIFY WHICH POWER POLE WILL BE UTILIZED AND ALL OTHER REQUIREMENTS WITH WESTAR PRIOR TO BID.
2	NEW UTILITY CO. UNDERGROUND SECONDARY CONDUCTORS. PROVIDE CONDUIT WITH PULLWIRE, MINIMUM 36" BELOW GRADE. VERIFY ALL REQUIREMENTS WITH WESTAR PRIOR TO BID.
3	EXTEND CIRCUIT TO FIXTURE OUT NEAR 13TH STREET. REFER TO E-4 FOR MORE INFORMATION.
4	CONNECT LIGHT FIXTURE CIRCUIT TO LOAD CENTER 'M2' LOCATED ADJACENT TO FIXTURE. PROVIDE 20A/2P CIRCUIT BREAKER AS REQUIRED IN LOAD CENTER.

### FEEDER SCHEDULE

FEEDER IDENT.	CONDUCTORS		GROUND SIZE PER SET	ISOLATED GRD. SIZE PER SET	CONDUIT SIZE PER SET
	SETS	QUANT. PER SET			
1	1	---	---	---	2"
2	1	2 #6	#10	---	1"
3	1	2 #8	#10	---	1"



**A TRAIL HEAD #02 - LIGHTING PLAN**  
SCALE: 1" = 40'-0"  
NORTH



**Integrated Consulting Engineers, Inc.**  
349 South Hydraulic • Wichita, KS 67211  
316.264.3588 • 316.264.3948 • www.icengr.com

Drawing File: M:\2011\11111.00-015 - Red Bud Bike Path Lighting\Electrical Files\E2s.dwg  
Project No. 11-07-E650  
Design: DR  
Drawn: CMM  
Approved: DR  
Scale: NOTED  
11111.00-015  
CAPITAL IMPROVEMENT PROJECT  
REDBUD BIKE PATH  
13TH STREET PAUSE POINT LIGHTING  
STA 91+00- STA 91+00

**Baughman Company, P.A.**  
315 Ellis St. Wichita, KS 67211 P 316-263-7271 F 316-262-0149  
Baughman ENGINEERING | SURVEYING | PLANNING | LANDSCAPE ARCHITECTURE