

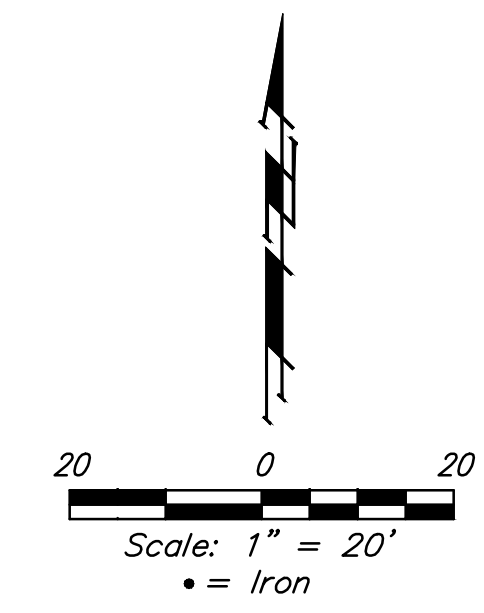
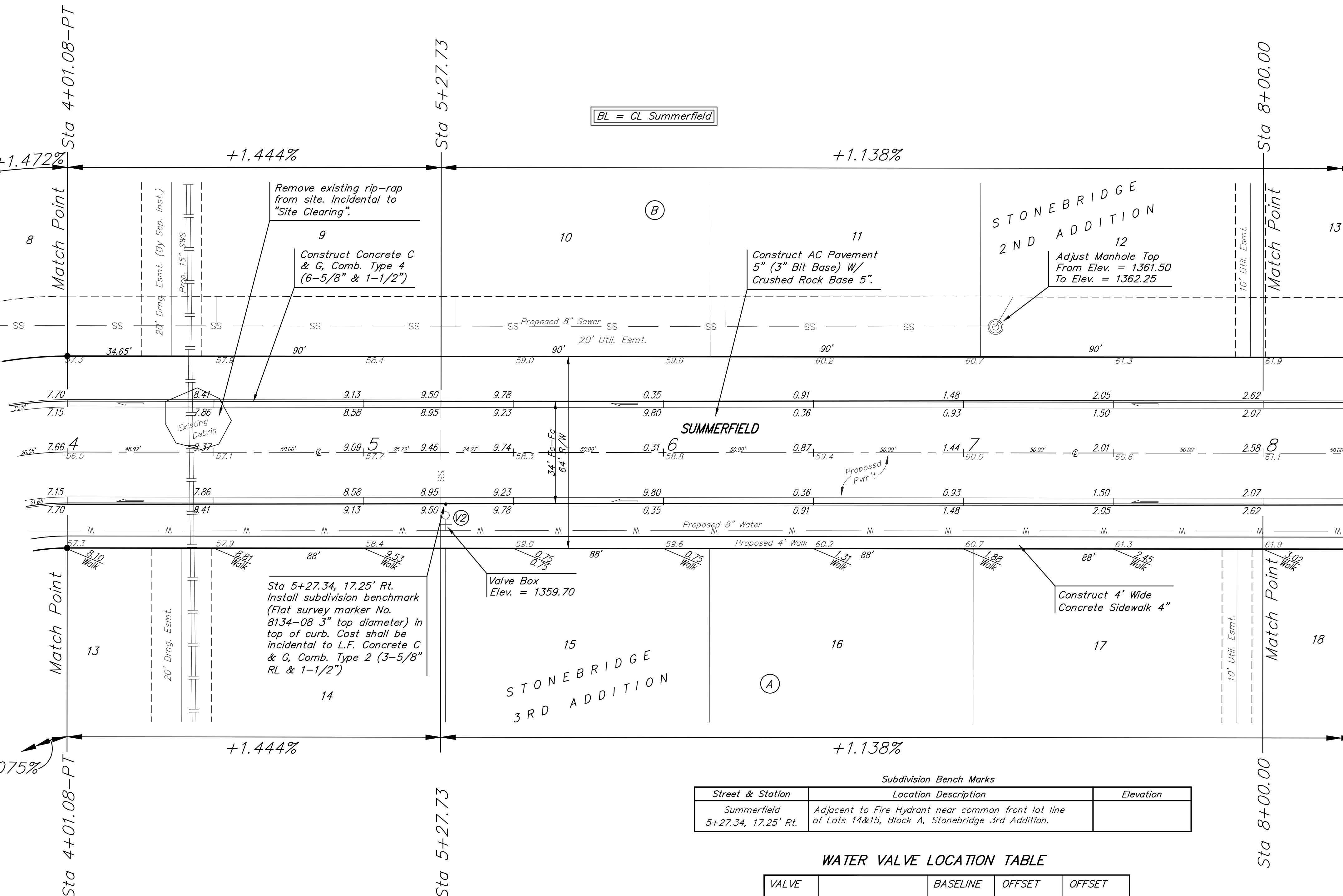
BENCHMARK:

BM #1: "□" Cut on top of curb, east side of Ridgehurst, adjacent to common front lot corner of Lots 6 & 7, Block E, Stonebridge 2nd Addition. ELEV. = 1348.51 NGVD29

BM #2: "□" Cut on top of curb, south side of Sundance, near end of pavement in front of Lot 6, Block 3, Savannah at Castle Rock Ranch 7th Addition. ELEV. = 1347.33 NGVD29

P.V.I.
Elev. = 1357.00
No V.C.

P.V.I.
Elev. = 1359.50
No V.C.



Subdivision Bench Marks

Street & Station	Location Description	Elevation
Summerfield 5+27.34, 17.25' Rt.	Adjacent to Fire Hydrant near common front lot line of Lots 14&15, Block A, Stonebridge 3rd Addition.	

WATER VALVE LOCATION TABLE

VALVE NUMBER	STREET	BASELINE STATION	OFFSET DISTANCE	OFFSET DIRECTION
V2	Summerfield	5+27.34	26'	Rt.

Paving contractor will be responsible to operate all water valves on the project, in the presence of the inspector, to ensure accessibility to the valves, and that all valves (except blowoffs) are left in the "ON" position when the project is completed.

P.V.I.
Elev. = 1357.00
No V.C.

P.V.I.
Elev. = 1359.50
No V.C.

B Baughman	STONEBRIDGE 2ND/3RD ADD. PH. 3	
	SUMMERFIELD	
STA 4+01.08 TO STA 8+00.00		
<small>Baughman Company, P.A. 315 Ellis St., Wichita, KS 67211 P 316-262-7271 F 316-262-0149 ENGINEERING SURVEYING PLANNING LANDSCAPE ARCHITECTURE</small>		
PROJECT NUMBER 472-84593	DESIGN TJW	DRAWN TMS
REVISIONS:	APPROVED	DATE 11/14
	SCALE Noted	SHEET
		7 OF 27
<small>StrSws 06-08-E639.dwg 06-08-E639</small>		