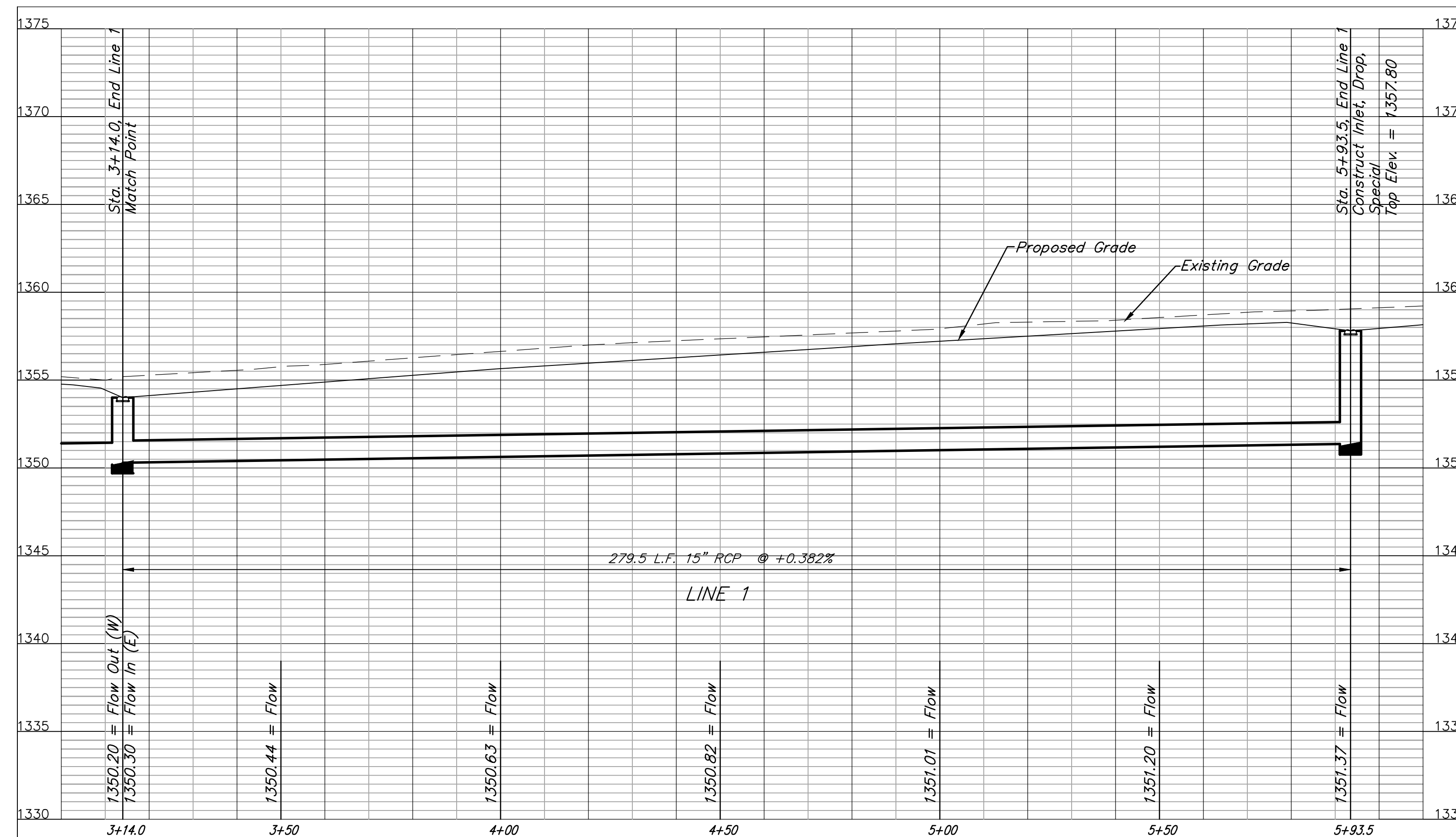
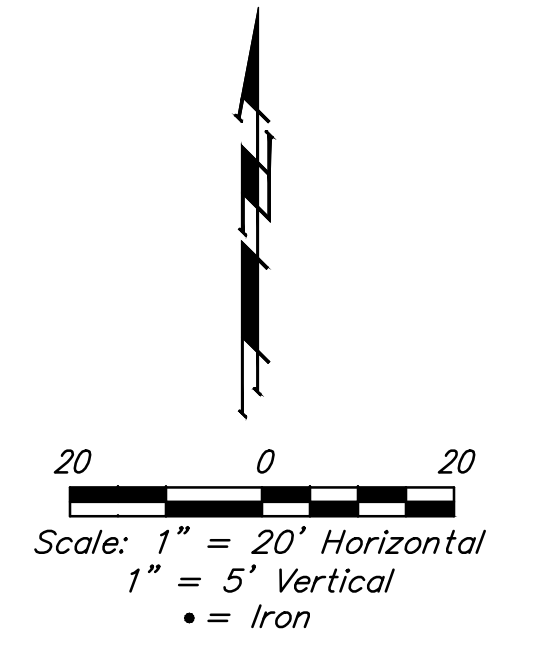
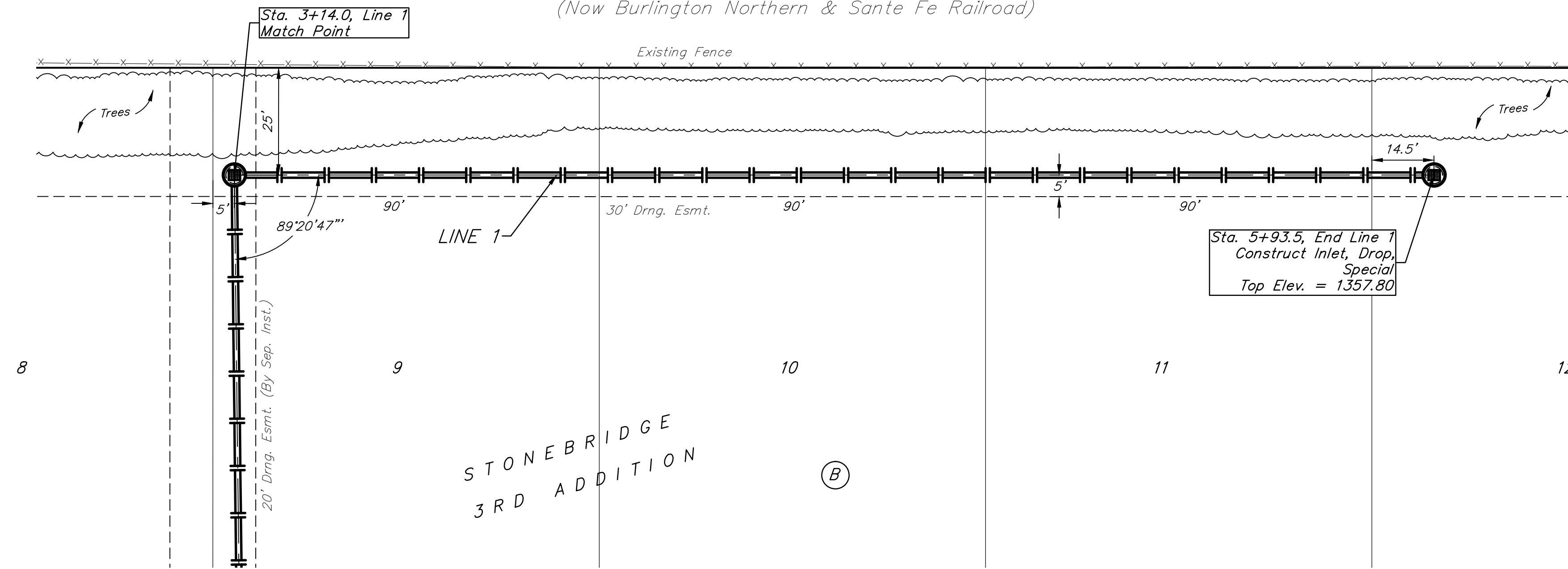


BENCHMARK:

BM #1: "□" Cut on top of curb, east side of Ridgehurst, adjacent to common front lot corner of Lots 6 & 7, Block E, Stonebridge 2nd Addition.
ELEV. = 1348.51 NGVD29

BM #2: "□" Cut on top of curb, south side of Sundance, near end of pavement in front of Lot 6, Block 3, Savannah at Castle Rock Ranch 7th Addition.
ELEV. = 1347.33 NGVD29

St. Louis, Wichita, & Western Railway Right-of-way
(Now Burlington Northern & Santa Fe Railroad)



	STONEBRIDGE 2ND/3RD ADD. PH. 3 LINE 1 SWS IMPROVEMENTS	
	<small>Baughman Company, P.A. 315 Ellis St., Wichita, KS 67211 P 316-263-2771 F 316-262-0149 ENGINEERING SURVEYING PLANNING LANDSCAPE ARCHITECTURE</small>	
PROJECT NUMBER 472-84593	DESIGN TJW	DRAWN TMS
REVISIONS:	APPROVED TMS	DATE 11/14
	SCALE Noted	SHEET 12 OF 27
<small>StrSws 06-08-E639.dwg</small>		<small>06-08-E639</small>