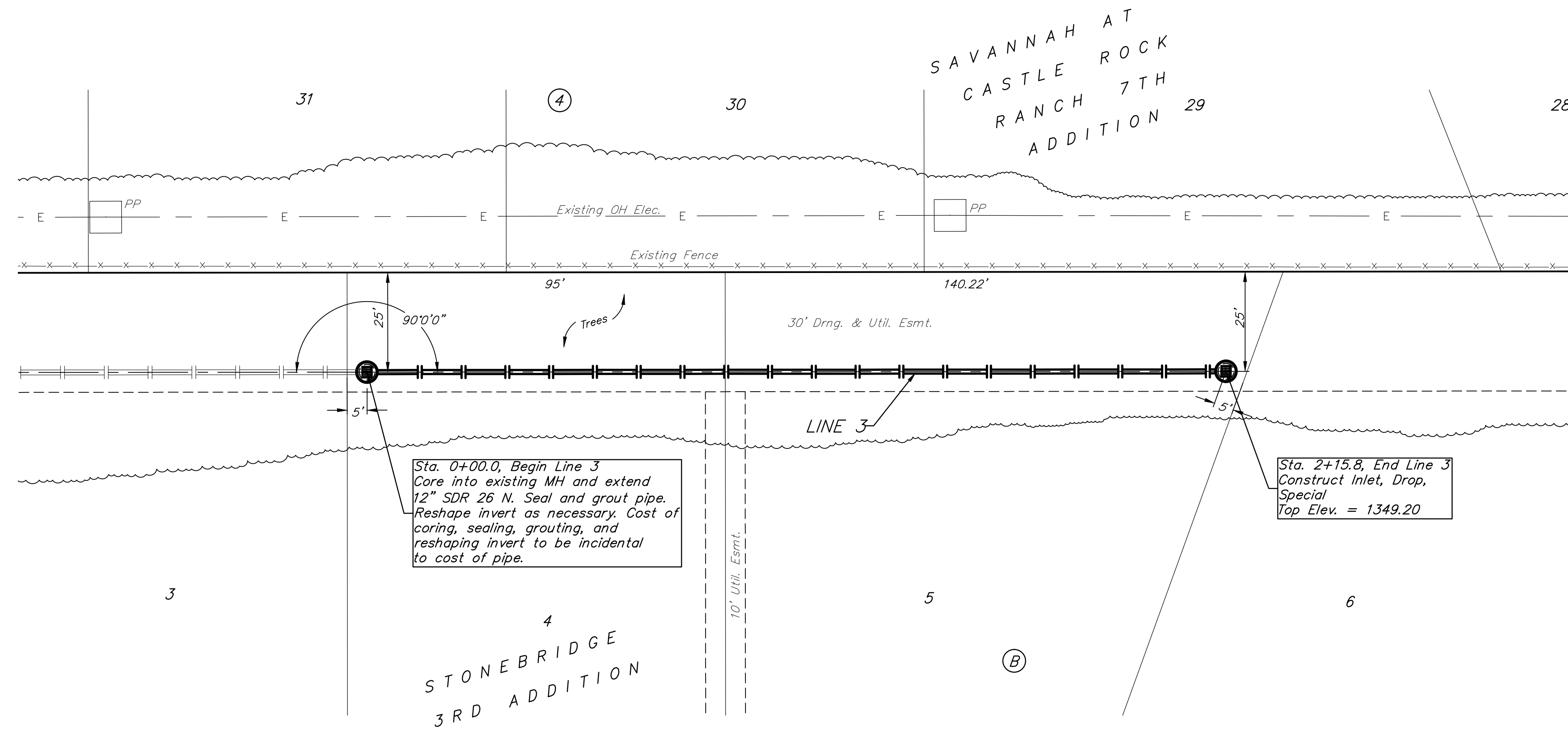


BENCHMARK:

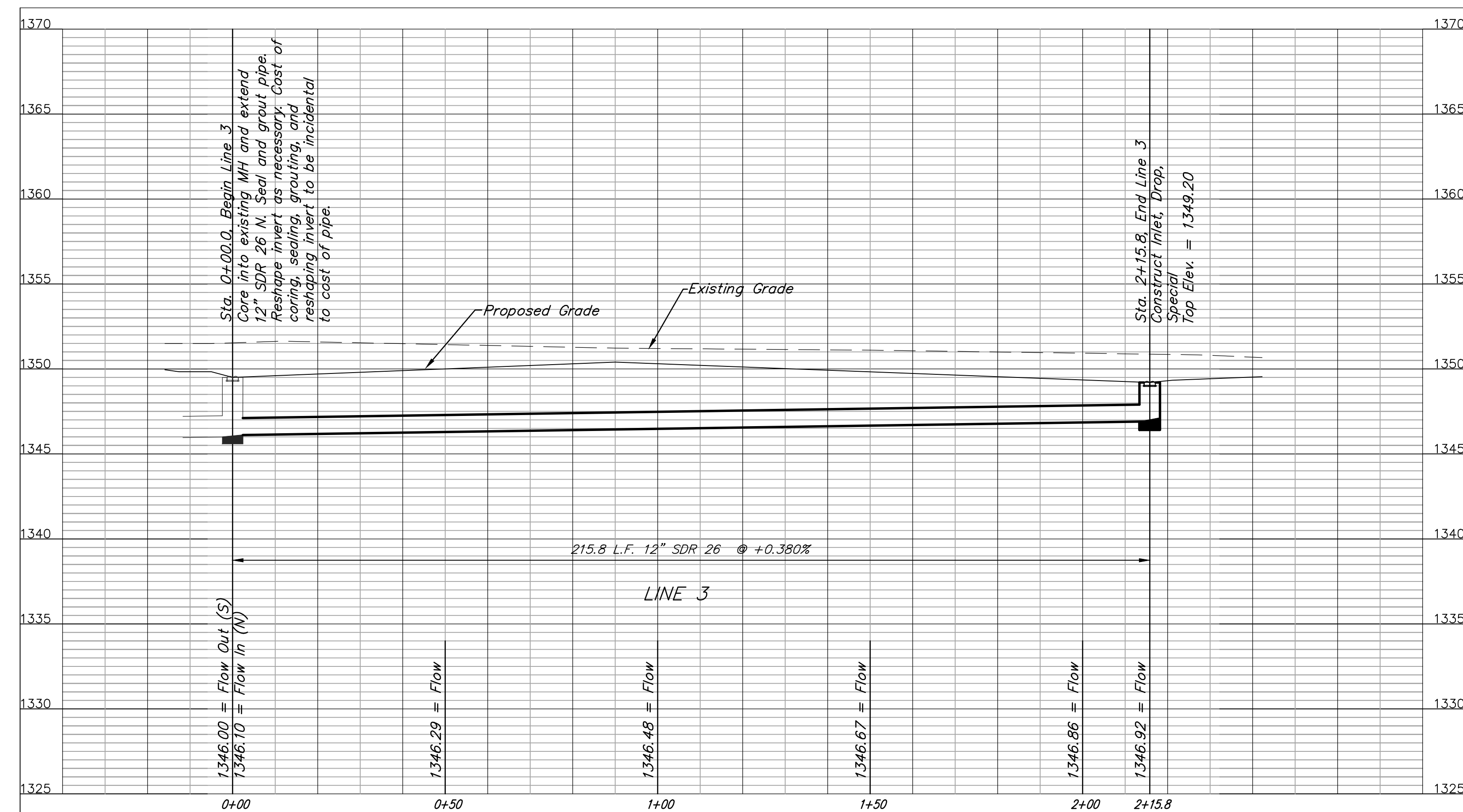
BM #1: "□" Cut on top of curb, east side of Ridgehurst, adjacent to common front lot corner of Lots 6 & 7, Block E, Stonebridge 2nd Addition.
ELEV. = 1348.51 NGVD29

BM #2: "□" Cut on top of curb, south side of Sundance, near end of pavement in front of Lot 6, Block 3, Savannah at Castle Rock Ranch 7th Addition.
ELEV. = 1347.33 NGVD29



Sta. 0+00.0, Begin Line 3
Core into existing MH and extend
12" SDR 26 N. Seal and grout pipe.
Reshape invert as necessary. Cost of
coring, sealing, grouting, and
reshaping invert to be incidental
to cost of pipe.

Sta. 2+15.8, End Line 3
Construct Inlet, Drop,
Special
Top Elev. = 1349.20



	STONEBRIDGE 2ND/3RD ADD. PH. 3 LINE 3 SWS IMPROVEMENTS	
	<small>Baughman Company, P.A. 315 Ellis St. Wichita, KS 67211 P 316-263-7771 F 316-262-0149 ENGINEERING SURVEYING PLANNING LANDSCAPE ARCHITECTURE</small>	
PROJECT NUMBER 472-84593	DESIGN TJW	DRAWN TMS
REVISIONS:	APPROVED DATE 11/14	SCALE Noted
		SHEET 14 OF 27