

STONEBRIDGE 2ND ADDITION SEDGWICK COUNTY, KANSAS

State of Kansas) SS We, Baughman Co
Sedgwick County) Surveyors in aforesaid county, and state do here
have surveyed and platted "STONEBRIDGE 2ND AD-
DITION", Sedgwick County, Kansas and that the accompanying plat
correct exhibit of the property surveyed, describe
replat of all of Lots 1, 2, 3, 4, 5, 6, 7, 8, 9, 10,
11, 12, 13, 14, 15, 16, 17, 18, 19, 20, 21, 22, and 23, Block A,
15, 16, 17, 18, 19, 20, 21, 22, and 23, Block A,
19, 20, 21, 22, 23, 24, 25, 26, 27, 28 and 29,
will all of Lots 1, 2, 3, 4, 5, 6, 7, 8, 9, 10, 11,
17, 18, 19, 20, 21, 22, 23, 24, 25, 26, 27, 28,
Block C, together with all of Lots 1, 2, 3, 4, 5,
12, 13, 14, 15, 16, 17, 18, 19, 20, 21, 22, 23, 24,
29, 30, 31, 32, 33, 34, 35, 36, 37, and 38, Block
all of Lots 1, 2, 3, 4, 5, 6, 7, 8, 9, 10, 11, 12,
10, 11, 12, 13, 14, 15, 16, 17, 18, 19, 20, 21, an
together with all of Reserves "A", "B", "C", "D",
as platted in Stonebridge Addition, Sedgwick Cou-
together with all of Ridgenurst, Ridgenurst Ct.,
Cl., Graystone, Sundance, and Summerfield, all of
Stonebridge Addition.

Existing public easements and dedications
being vacated by virtue of K.S.A. 12-512(b).

Michael A. Conrey
Michael G. Conrey

Know all men by these
the undersigned, have caused the land in the survey
plotted into Lots, Blocks, Reserves, and Streets, to
"STONEBRIDGE 2ND ADDITION", Sedgwick County, Kans-
as easements are hereby granted as indicated for the
maintenance of all public utilities. The drainage and
are hereby granted as indicated for drainage purposes
construction and maintenance of all public utilities.
easements are hereby granted as indicated for drain-
contingent pedestrian access easement is hereby gra-
for pedestrian access to or from the Burlington Nor-
Railroad right-of-way, construction of public improve-
railbanked and the construction of public improve-
access within said railroad right-of-way. Fences sh-
this easement until such time as the Burlington Nor-
Railroad right-of-way is railbanked and the construc-
improvements within said railroad right-of-way has
are hereby dedicated to and for the use of the pub-
and "C" are hereby reserved for utility monuments, l-
space, drainage purposes, and utilities. The public s-
cost of any repair or replacement of improvements
"A" and "C" adversely affected by street construction
maintenance. Reserve "B" is hereby reserved for en-
landscaping, open space, berms, drainage purposes,
confined to easements. Reserves "D" and "E" are
lakes, landscaping, open space, berms, sidewalks, dr-
floodway, and utilities as confined to easements. No
change of grade, creation of channel, or any other
without the permission of the Engineer for the appro-
body. Reserve "F" is hereby reserved for lakes, lan-
berms, sidewalks, parking, a swimming pool and occ-
activities, gazebos, drainage purposes, and utilities a-
easements. Reserve "A", "B", "C", "D", "E", and "F"
maintained by the homeowners association for the a-
controls shall be as depicted on the face of the pla-
granted to the appropriate governing body. The Min-
Elevations for the lowest opening to the structures s-
on the face of the plat.

FLKS Land Development, LLC
a Kansas limited liability company

Steven R. Barrett
State of Kansas) SS The foregoing instrument
Sedgwick County) me, this 5th day of April, 2007, by Ste-
Member of FLKS Land Development, LLC, a Kansas li-
company on behalf of the limited liability company.

My App't. Exp. 9/7/09
PHILIP J. MEYER
My Public Exp. 9/7/07

We, the undersigned holders of
above described property do hereby consent to this
2ND ADDITION", Sedgwick County, Kansas.
Commerce Bank, N.A.
COLLIN STIEBEN

State of Kansas) SS The foregoing instrument of
Sedgwick County) fore me, this 5th day of April, 2007, by C-
Vice President of Commerce Bank, N.A., on beha-
COLLEEN A. BELTON
My App't. Exp. June 9, 2010

This plat of "STONEBRIDGE
Sedgwick County, Kansas has been submitted to and
Michita-Sedgwick County Metropolitan Area Planning
Kansas
Dated this 4th day of January,
Michita-Sedgwick County Metropolitan Area Planning
Dorelli A. Downing
John L. Schlegel

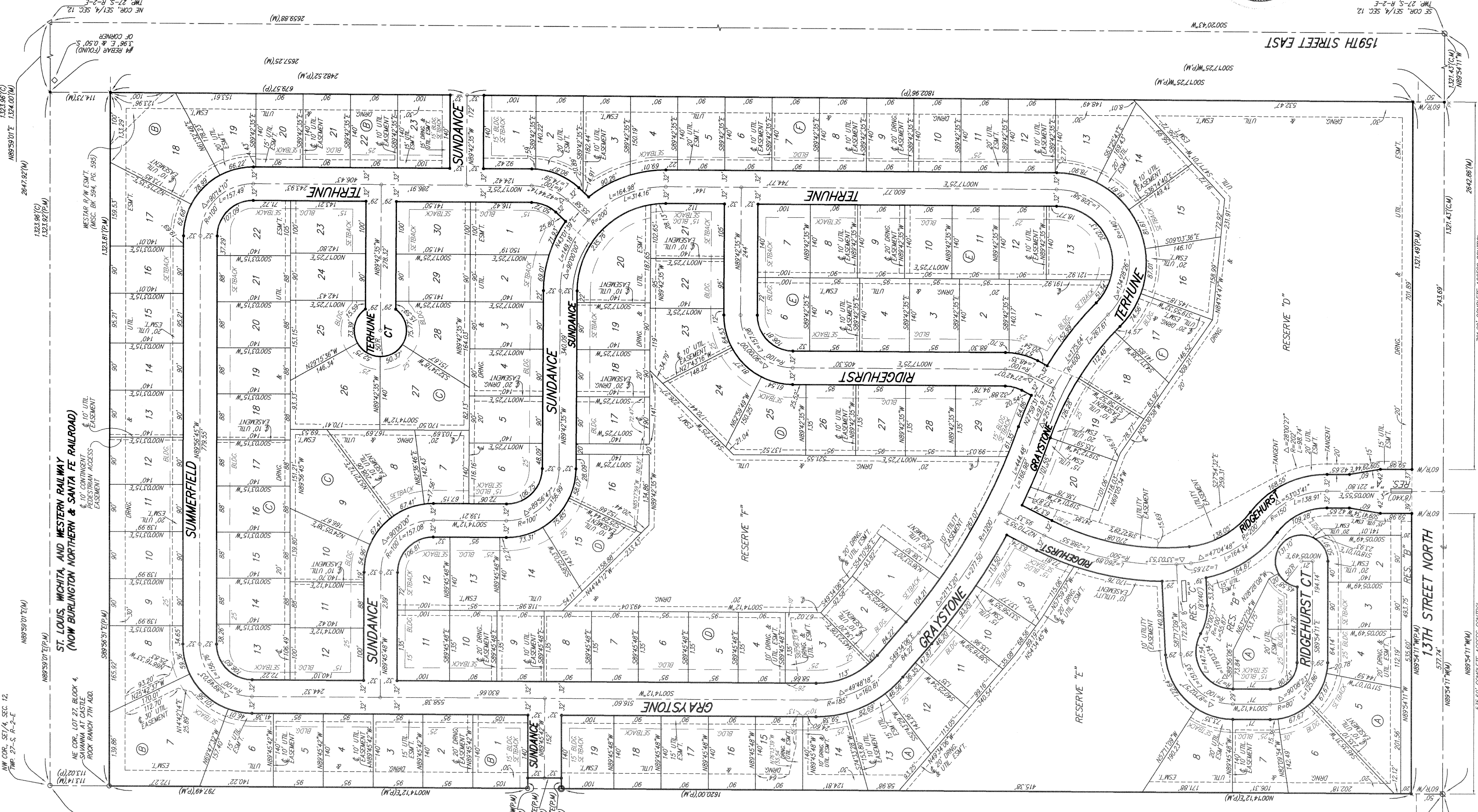
This plat approved and all
shown hereon accepted by the City Council of the C-
Kansas, this 23rd day of May, 2007.

Cal Brewer
Karen Sublett

This plat approved and all de-
hereon accepted by the Board of Commissioners of
Kansas, this 23rd day of May, 2007.

Don Brace
Don Brace

Reviewed in accordance with
on this 24th day of May, 2007.



NOTE: A MASTER GRADING PLAN FOR DRAINAGE HAS BEEN DEVELOPED FOR THIS SUBDIVISION AND IS ON FILE IN THE OFFICE OF THE COUNTY ENGINEER OR THE ENGINEER OF RECORD. DRAINAGE EASEMENTS ARE SHOWN ON THE PLAT. RESERVES SHALL REMAIN AT ESTABLISHED GRADES OR AS MODIFIED WITH THE APPROVAL OF THE COUNTY ENGINEER OR THE ENGINEER FOR THE APPROPRIATE IMPROVE THE FLOW OF THIS DRAINAGE SYSTEM SHALL BE ALLOWED.

MINIMUM BUILDING PAD ELEVATIONS FOR STRUCTURES BEING TO THE STRUCTURES

BLOCK	ELEVATION
A	1342.5
A	1342.5
A	1341.0
D	1344.5
D	1348.5
F	1338.5

(M) = MEASURED
(P) = PLATTED
(C) = CALCULATED

26_OF_27

Entered on transfer record this 23rd day of May, 2007.
Don Brace
County Clerk
County Clerk

State of Kansas) SS This is to certify that this plat has been
Sedgwick County) filed for record in the office of the Register of Deeds, this 23rd day of May, 2007.

