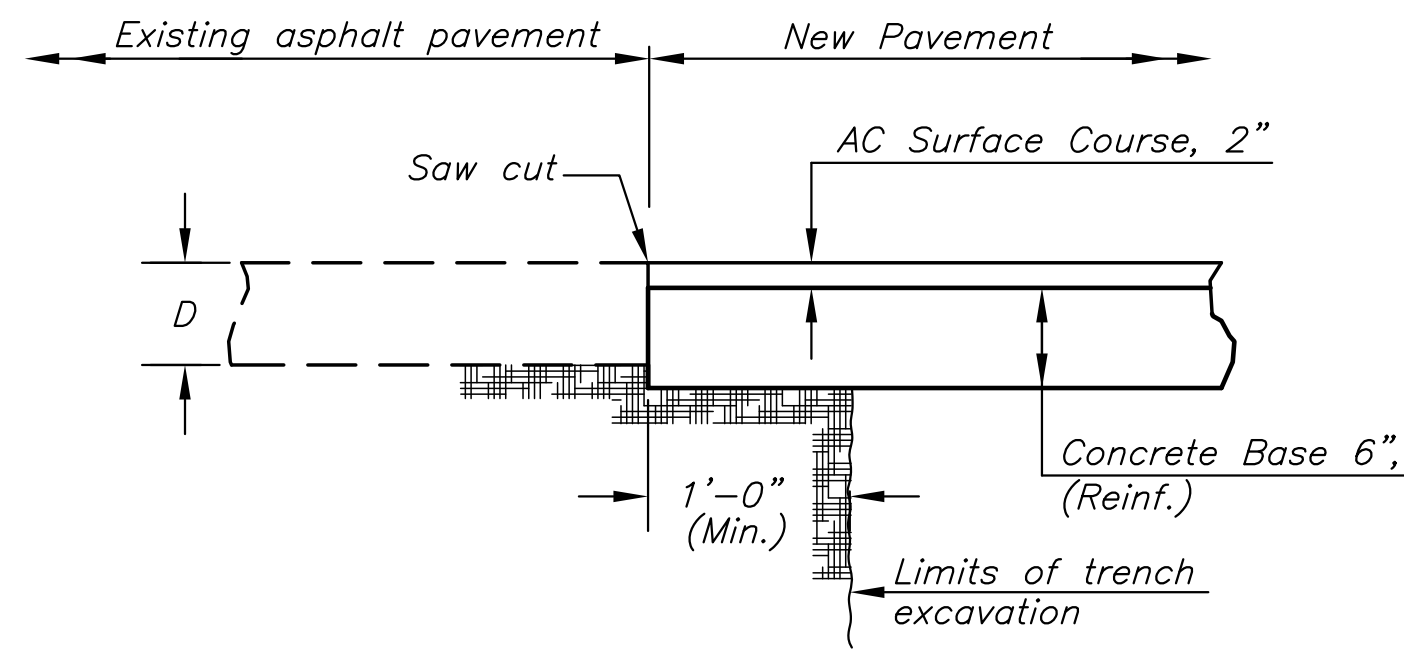


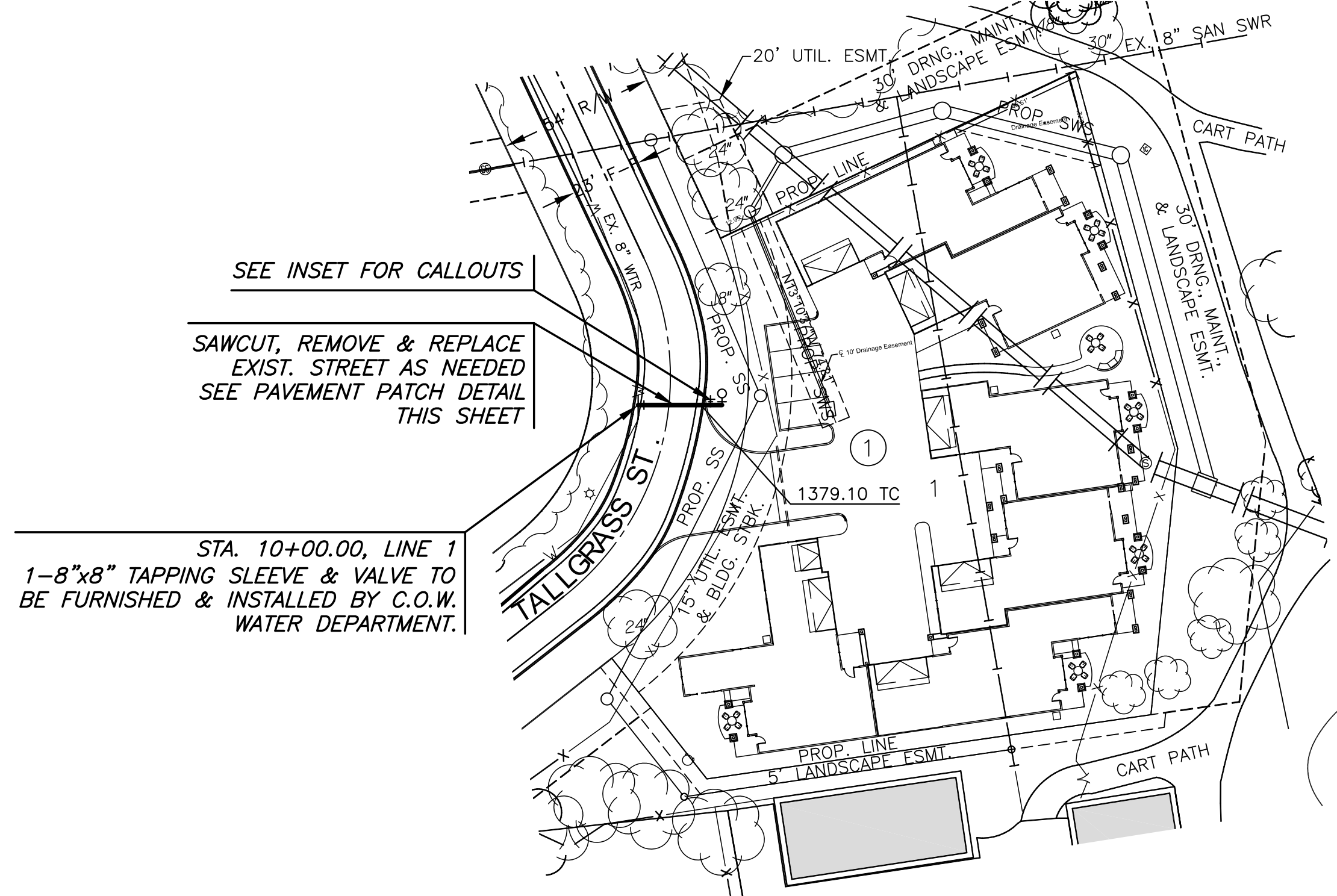
PLOTTED: Wednesday, November 19, 2014 @ 04:17PM



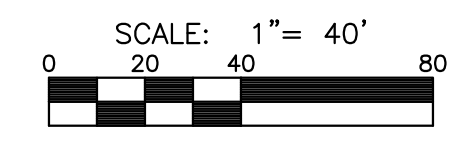
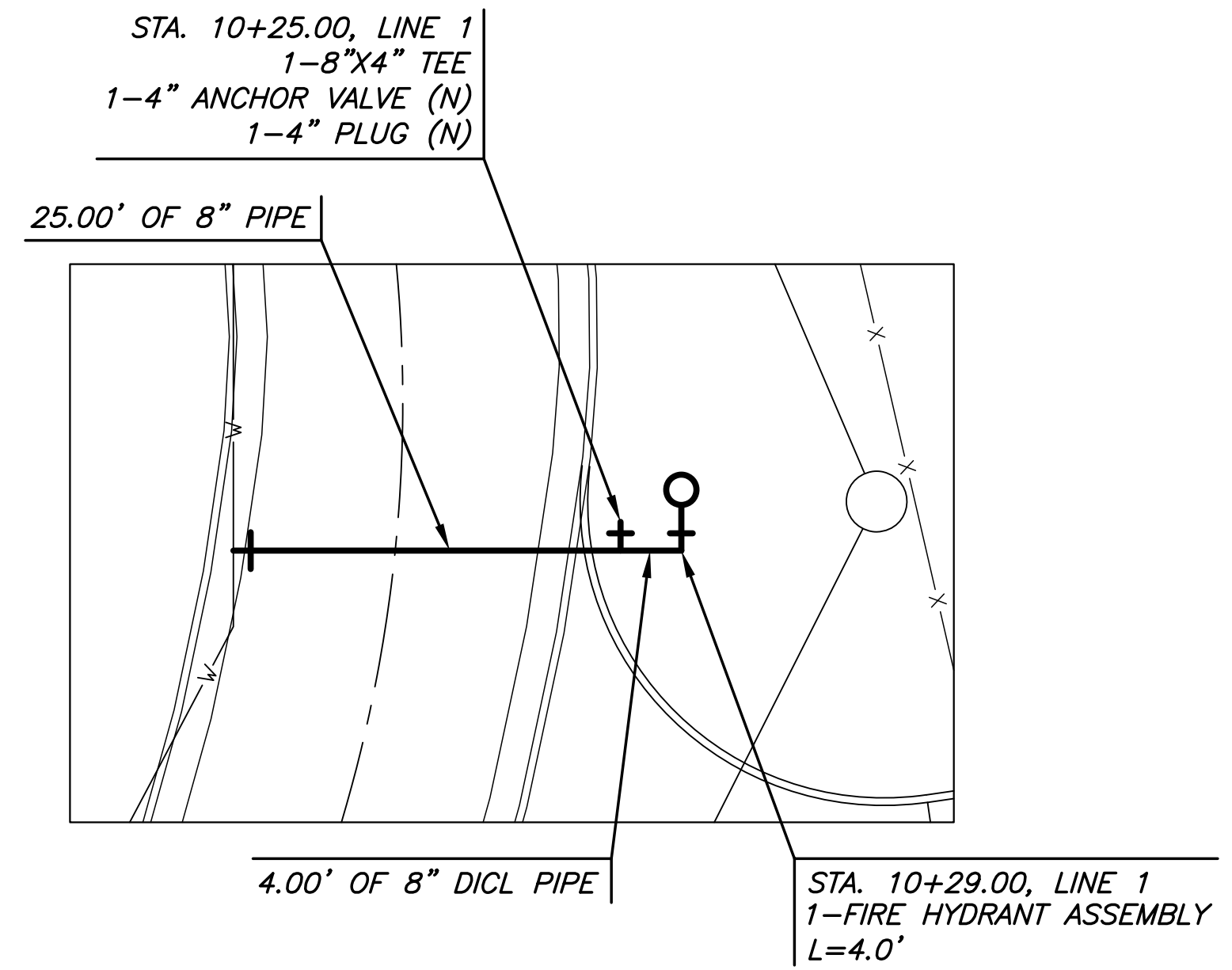
PAVEMENT PATCH DETAIL

Existing pavement removal shall be paid for as "AC Pavement Removal" and shall be measured by the linear foot. New Pavement and Concrete Base will be paid as shown on this detail and shall be measured by the linear foot.

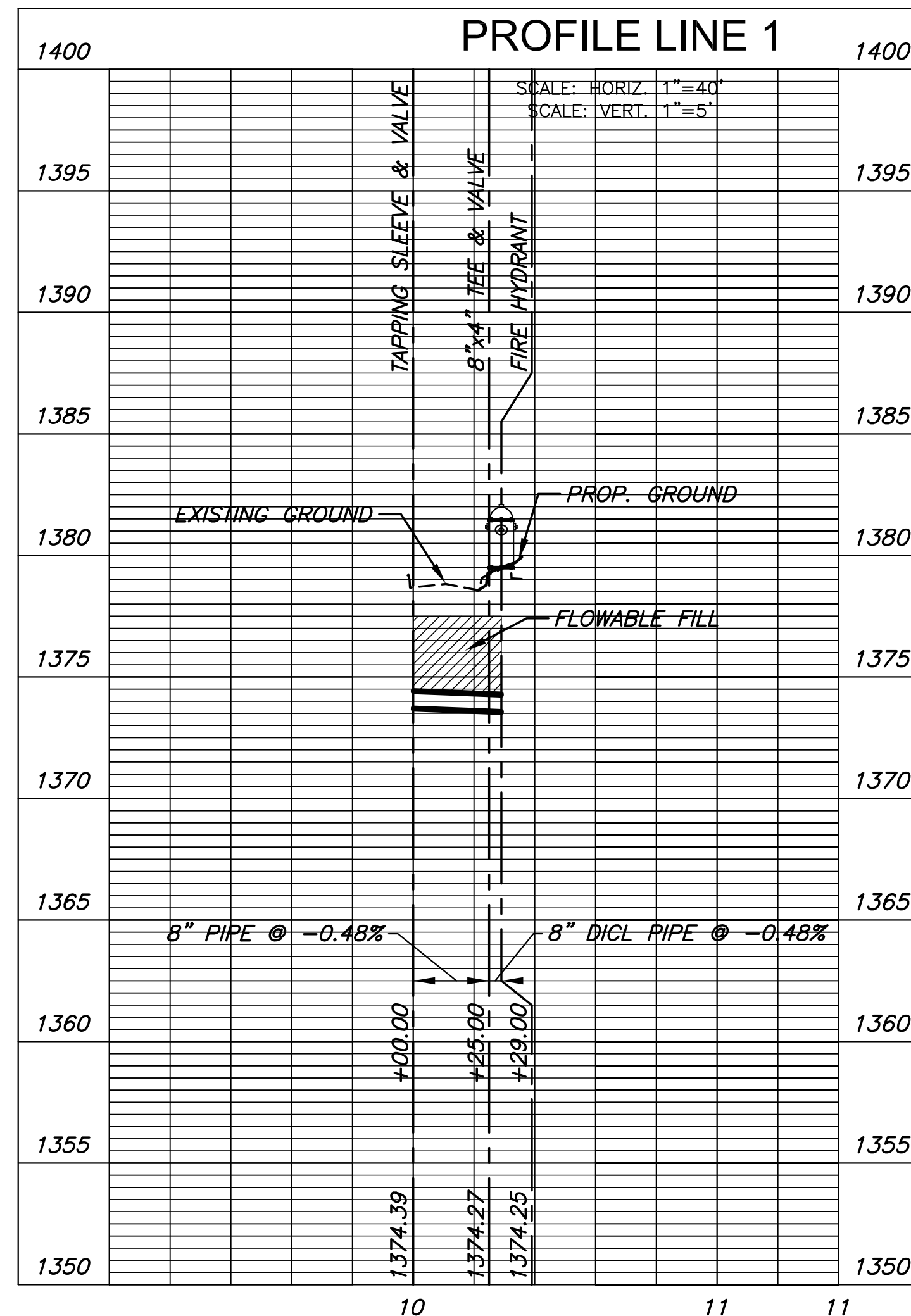
NOTE:
CONTRACTOR TO VERIFY LOCATION AND ELEVATION OF EXIST. 8" WATER LINE PRIOR TO CONSTRUCTION.



SEE INSET FOR CALLOUTS
SAWCUT, REMOVE & REPLACE EXIST. STREET AS NEEDED SEE PAVEMENT PATCH DETAIL THIS SHEET
STA. 10+00.00, LINE 1
1-8"x8" TAPPING SLEEVE & VALVE TO BE FURNISHED & INSTALLED BY C.O.W. WATER DEPARTMENT.



**PLAN LINE 1
PROFILE LINE 1**



WATER POINTS			
Point #	Northing	Easting	Desc.
1	1700234.10	1677728.20	TAP
2	1700230.20	1677752.89	TEE & VALVE
3	1700229.57	1677756.84	FIRE HYDRANT



WATER DISTRIBUTION PLANS FOR
TALLGRASS VILLAS ADDITION
WICHITA, KS

©2014 MKEC Engineering All Rights Reserved
www.mkec.com
These drawings and their contents, including, but not limited to, all concepts, designs, & ideas are the exclusive property of MKEC Engineering (MKEC), and may not be used or reproduced in any way without the express consent of MKEC.

WATER LINE 1

PROJECT NO.	448-90645	
DATE	NOV. 2014	
SCALE	1"=40'	
DESIGNED	DRAWN	CHECKED
AJK	BKS	AJK



NO.	REVISION	DATE

SHEET NO.

J:\PROJECTS\2013\10\10787_PERFECTION - TALLGRASS-CIVIL\CAD\WTR\13787_WTR_LINE 1.DWG