

STORM WATER SEWER #686

TO SERVE

# TALLGRASS VILLAS ADDITION

PROJECT NO. 468-84987

THE CITY OF WICHITA, KANSAS  
GARY JANZEN, P.E. - CITY ENGINEER

OCA NO. 751527

## GENERAL NOTES

- UNLESS SHOWN OR OTHERWISE STATED ON THESE DRAWINGS, MATERIALS AND CONSTRUCTION SHALL BE IN ACCORDANCE WITH THE CITY OF WICHITA STANDARD SPECIFICATIONS AND SPECIAL PROVISIONS.
- THE TOPS OF INLETS AND MANHOLES AS NOTED ON THE PLANS MAY VARY SO AS TO MEET PROPOSED TOP OF CURB ELEVATIONS OR PAVEMENT ELEVATIONS. THE FIELD ENGINEER SHALL LOCATE INLETS AND MANHOLES WITH REFERENCE TO PROPOSED PAVING PLANS OF THE PERTINENT STREETS.
- ALL CONCRETE SHALL BE STANDARD 6.6 SACK PAVING MIX UNLESS OTHERWISE NOTED.
- THE CONTRACTOR SHALL BE RESPONSIBLE FOR PRESERVING PROPERTY IRONS. THE CONTRACTOR SHALL BE REQUIRED TO RE-ESTABLISH ANY PROPERTY IRONS WHICH ARE DAMAGED OR DESTROYED BY HIS CONSTRUCTION OPERATIONS. SUCH IRONS SHALL BE RE-ESTABLISHED BY A LICENSED LAND SURVEYOR IN ACCORDANCE WITH STATE LAWS.
- TREES TO BE REMOVED ARE MARKED . ALL TREES WHICH IN THE OPINION OF THE FIELD ENGINEER CAN BE SAVED, SHALL BE SAVED. TREE REMOVAL SHALL BE SUBSIDIARY TO SITE CLEARING AND RESTORATION.
- EXISTING UTILITIES AND THEIR LOCATIONS, AS SHOWN ON THE PLANS REPRESENT THE BEST INFORMATION OBTAINABLE FOR DESIGN. LOCATION INFORMATION HAS BEEN OBTAINED FROM THE VARIOUS COMPANIES AND IS EITHER FROM COMPANY UTILITY DRAWINGS OR COMPANY PROVIDED FIELD LOCATIONS. THE PLAN LOCATIONS SHOWN ARE NOT GUARANTEED. ADDITIONAL EXISTING UTILITIES MAY ALSO BE ENCOUNTERED.
- CONTRACTOR SHALL NOTIFY UTILITY COMPANIES OF CONSTRUCTION SCHEDULING.
- CONTRACTOR WILL BE REQUIRED TO PROVIDE A MINIMUM ADVANCE NOTICE OF SEVENTY-TWO (72) HOURS TO UTILITY COMPANIES TO STARTING ANY EXCAVATION AS FOLLOWS:

KANSAS ONE-CALL 800-344-7233  
OR 687-2470 (LOCAL WICHITA)

THE CONTRACTOR MUST NOTIFY THE FOLLOWING IN CASE OF EMERGENCY:

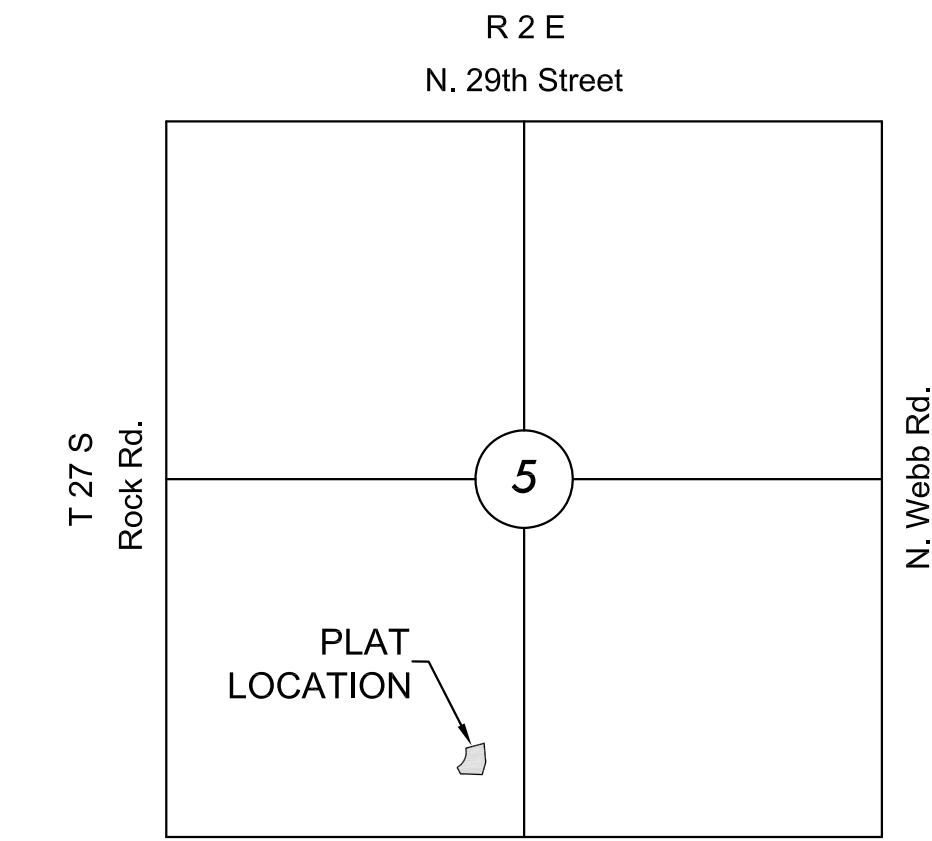
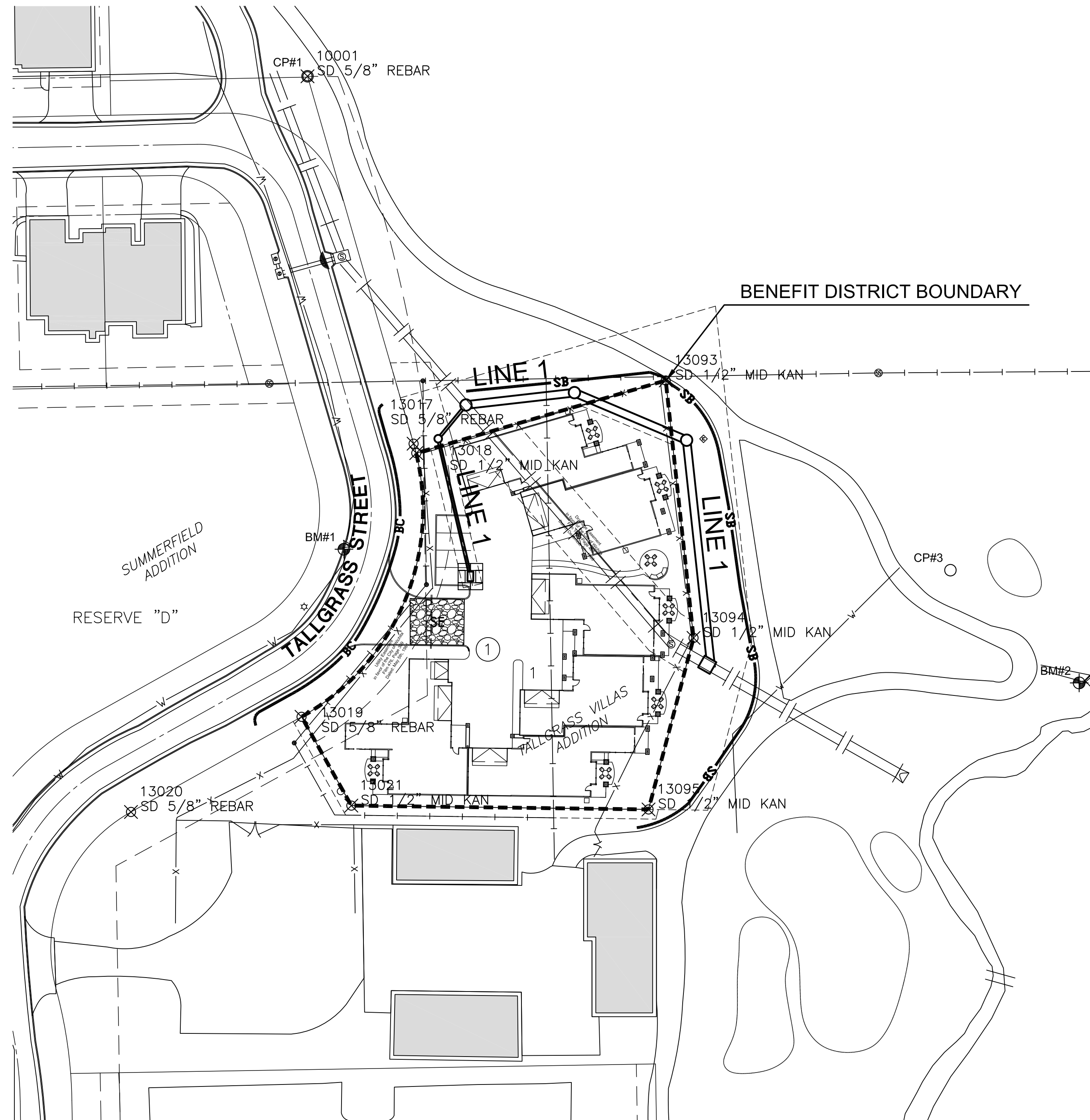
|                               |              |
|-------------------------------|--------------|
| COX COMMUNICATIONS (CABLE)    | 262-0661     |
| WESTAR (ELECTRIC)             | 261-6512     |
| KANSAS GAS SERVICE (GAS)      | 832-3101     |
| SBC (TELEPHONE)               | 800-870-8390 |
| CITY OF WICHITA WATER & SEWER | 262-6000     |
| BLACK HILLS ENERGY (GAS)      | 800-303-0357 |

- RUBBLE FROM THE REMOVAL OF MISCELLANEOUS STRUCTURES AND EXCESS EXCAVATION WHICH IS TO BE WASTED SHALL BE DISPOSED OF ON SITES TO BE PROVIDED BY THE CONTRACTOR. THESE SITES SHALL BE APPROVED BY THE ENGINEER AS TO SUITABILITY, APPEARANCE AND SITE LOCATION. LOCATIONS THAT, IN THE OPINION OF THE ENGINEER, WILL LEAVE AN UNSIGHTLY APPEARANCE WILL NOT BE APPROVED. ALL DISPOSAL SITES MUST BE APPROVED BY THE KANSAS DEPARTMENT OF HEALTH AND ENVIRONMENT. MATERIAL EITHER STOCKPILED OR DISPOSED OF IN A FLOOD PLAIN WOULD REQUIRE A KANSAS STATE BOARD OF AGRICULTURE PERMIT. ANY MATERIAL DUMPED IN WATERS OF THE UNITED STATES OR WETLANDS IS SUBJECT TO U.S. CORPS OF ENGINEERS PERMITTING REGULATIONS. ANY MATERIAL BURIED OR STOCKPILED BEYOND APPROVED CONSTRUCTION LIMITS WOULD REQUIRE ADDITIONAL ARCHAEOLOGICAL INVESTIGATIONS UNLESS BURIED IN A PREVIOUSLY APPROVED BORROW LOCATION.

- CONTRACTOR SHALL RESEED AND MULCH ALL DISTURBED AREAS. COST SHALL BE CONSIDERED SUBSIDIARY TO SITE RESTORATION.

- DEVELOPER FOR THIS PROJECT IS:  
PERFECTION SIGNATURE PROPERTIES, LLC.  
11828 W. CENTRAL #124  
WICHITA, KS 67212  
SCOTT LEHNER  
316-729-1900

| PLAT POINTS |            |            |                 |
|-------------|------------|------------|-----------------|
| Point #     | Northing   | Easting    | Desc.           |
| 10001       | 1700483.44 | 1677708.60 | SD 5/8" REBAR   |
| 13017       | 1700291.59 | 1677764.01 | SD 5/8" REBAR   |
| 13018       | 1700286.69 | 1677765.40 | SD 1/2" MID KAN |
| 13019       | 1700148.99 | 1677705.50 | SD 5/8" REBAR   |
| 13020       | 1700099.31 | 1677616.44 | SD 5/8" REBAR   |
| 13021       | 1700102.63 | 1677731.49 | SD 1/2" MID KAN |
| 13093       | 1700324.61 | 1677895.66 | SD 1/2" MID KAN |
| 13094       | 1700190.18 | 1677910.19 | SD 1/2" MID KAN |
| 13095       | 1700100.61 | 1677886.68 | SD 1/2" MID KAN |



## VICINITY MAP

No Scale

## INDEX TO DRAWINGS

| SHEET NO. | DESCRIPTION |
|-----------|-------------|
| 1         | TITLE SHEET |
| 2         | DETAILS     |
| 3         | LINE 1      |
| 4-8       | BMP DETAILS |
| 9         | FINAL PLAT  |

## BENCHMARKS

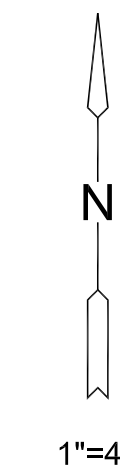
- BM#1**: Plus Cut set on top of west curb of Tallgrass Street in middle of site 36.5' NE of a light pole. Elev. = 1379.16 NAVD 88.
- BM#2**: Plus cut set on center south end of wing wall on the west end of a pedestrian bridge 200' east of the site. Elev. = 1374.66 NAVD 88.

## CONTROL POINTS

- CP#-1**: 5/8" Rebar at the NE corner of Reserve "E", Summerfield Addn. Elev. = 1379.20 NAVD 88 N = 1700483.438 E = 1677708.600
- CP#-3**: 60d Nail set 18' NE of cart path & 92' NW of the end of a pedestrian bridge. Elev. = 1376.344 NAVD 88 N = 1700225.549 E = 1678044.330

## LEGEND

- BC**: BACK OF CURB PROTECTION
- SB**: SILT FENCE SEDIMENT BARRIER (1 400 LF)
- : CURB INLET FILTER
- : INLET PROTECTION
- : STABILIZED ENTRANCE



**TALLGRASS VILLAS ADDITION**  
 WICHITA, KANSAS  
 STORM WATER SEWER PLAN FOR

©2014 MKEC Engineering All Rights Reserved  
www.mkec.com  
These drawings and their contents, including, but not limited to, all concepts, designs, & ideas are the exclusive property of MKEC Engineering (MKEC), and may not be used or reproduced in any way without the express consent of MKEC.

## TITLE SHEET

|             |             |         |
|-------------|-------------|---------|
| PROJECT NO. | 468-84987   |         |
| DATE        | AUGUST 2014 |         |
| SCALE       | 1"=40'      |         |
| DESIGNED    | DRAWN       | CHECKED |
| JGD         | JGD         | ABC     |
| NO.         | REVISION    | DATE    |
| SHEET NO.   |             |         |
| 1 OF 9      |             |         |