

BENCHMARKS:
 BM #1: "□" Cut in top of curb, east return of SE corner of Lotus & Parkridge.
 Elev. = 145.99 (City Datum)

BM #2: C.O.W. Disc Adjacent to Fire Hydrant in S.E. Curb Return of Grant & Milstead.
 Elev. = 146.09 (City Datum)

BM #3: "X" Cut in Top of Curb at South End of Golden Hills Ct. Cul-de-Sac.
 Elev. = 147.73 (City Datum)

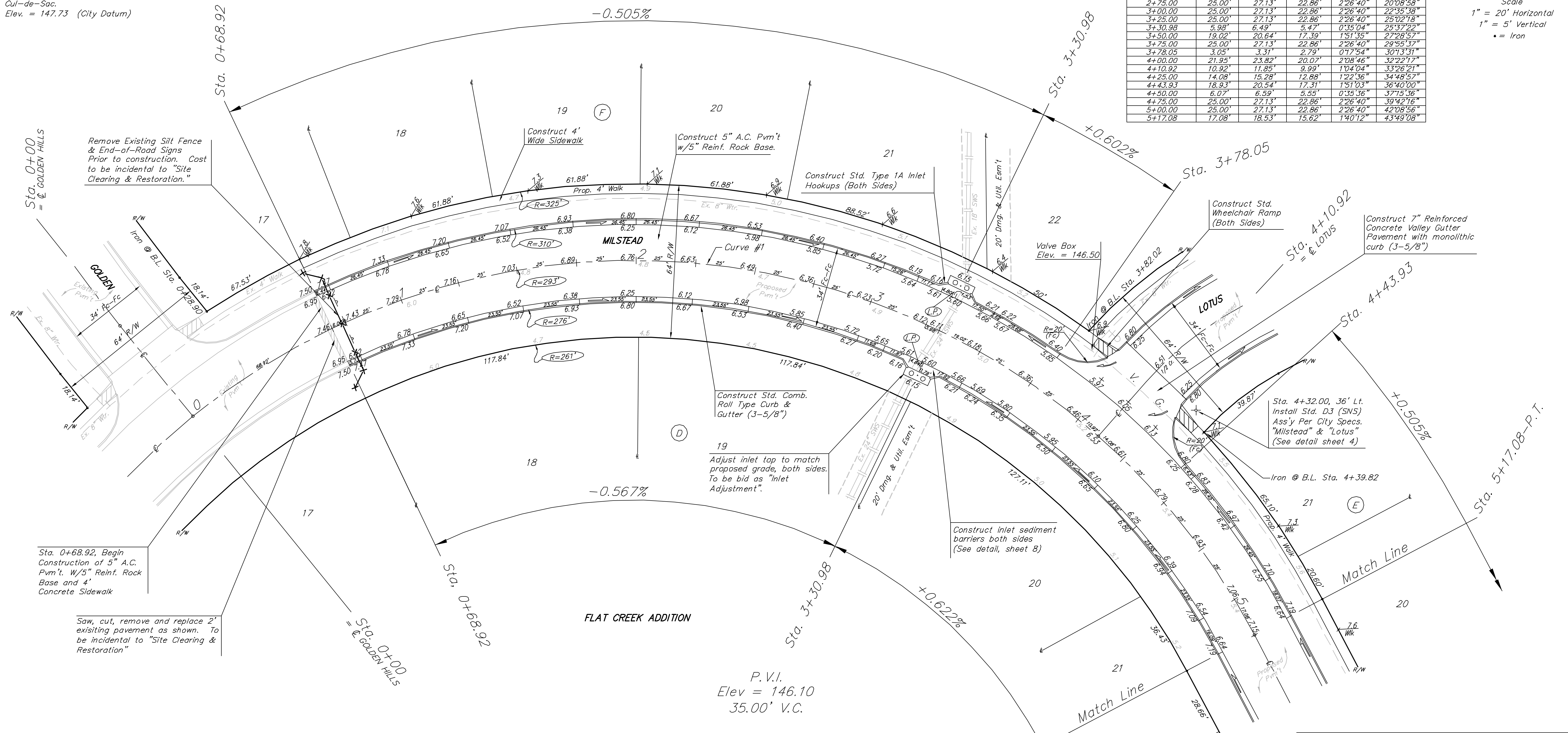
FLAT CREEK ADDITION

P.V.I.
 Elev = 146.10
 40.24' V.C.

Curve #1
 Curve Data Based on Centerline
 Rad. = 293' Delta = 87° 38' 17" Tangent = 281.16'
 Arc = 448.16' L.C. = 405.74' Def/Ft. = 5.86652 Min.

Station	FACE CHORD LENGTHS		Defl.	T. Defl.
	8' Lt.	8' Rt.		
0+68.92			0.0000"	0.0000"
0+75.00	6.08'	6.60'	5.56"	0.3540"
1+00.00	25.00'	27.13'	22.86"	2.2640"
1+25.00	25.00'	27.13'	22.86"	2.2640"
1+50.00	25.00'	27.13'	22.86"	2.2640"
1+75.00	25.00'	27.13'	22.86"	2.2640"
2+00.00	25.00'	27.13'	22.86"	2.2640"
2+25.00	25.00'	27.13'	22.86"	2.2639"
2+50.00	25.00'	27.13'	22.86"	2.2640"
2+75.00	25.00'	27.13'	22.86"	2.2640"
3+00.00	25.00'	27.13'	22.86"	2.2640"
3+25.00	25.00'	27.13'	22.86"	2.2640"
3+30.98	5.98'	6.49'	5.47"	0.3504"
3+50.00	19.02'	20.64'	17.39"	1.5135"
3+75.00	25.00'	27.13'	22.86"	2.2640"
3+78.05	3.05'	3.31'	2.79"	0.1754"
4+00.00	21.95'	23.82'	20.07"	2.0846"
4+10.92	10.92'	11.85'	9.99"	1.0404"
4+25.00	14.08'	15.28'	12.88"	1.2236"
4+43.93	18.93'	20.54'	17.31"	1.5103"
4+50.00	6.07'	6.59'	5.55"	0.3536"
4+75.00	25.00'	27.13'	22.86"	2.2640"
5+00.00	25.00'	27.13'	22.86"	2.2640"
5+17.08	17.08'	18.53'	15.62"	1.4012"

Scale
 1" = 20' Horizontal
 1" = 5' Vertical
 • = Iron



Sta. 0+68.92, Begin Construction of 5" A.C. Pvm't. W/5" Reinf. Rock Base and 4' Concrete Sidewalk

Saw, cut, remove and replace 2' existing pavement as shown. To be incidental to "Site Clearing & Restoration"

NOTE: ROLL TYPE CURB & CUTTER TO BE CONSTRUCTED ON THE PAVEMENT SHOWN ON THIS SHEET. TOP OF CURB ELEVATIONS ARE GIVEN FOR FULL HEIGHT CURB.

FLAT CREEK ADDITION - PHASE III
MILSTEAD
 STA 0+00 TO STA 5+17.08

BAUGHMAN COMPANY P.A.
 ENGINEERING, SURVEYING, & PLANNING
 316-262-7271 • 315 ELLIS • WICHITA, KANSAS 67211

PROJECT NUMBER
472-83395

DESIGN: NBW DRAWN: KDP/CNX APPROVED: [Signature] DATE: 10/03 SCALE: NOTED

SHEET **6** OF **44**